

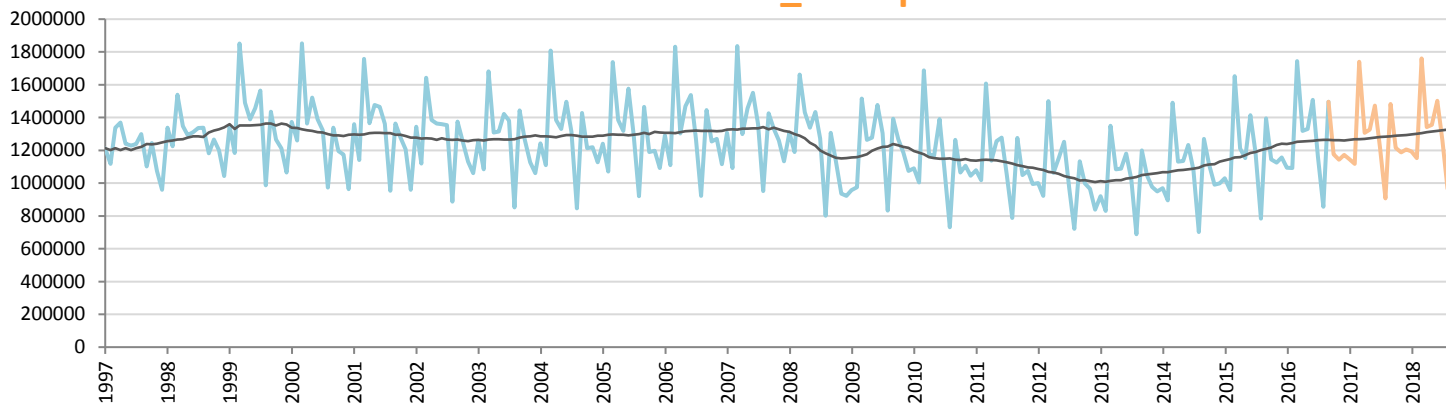
Car Sales Forecast : EUROPE_PC Sept. 2016

Total	Jan.	Feb.	March	April	May	June	July	Aug.	Sept.	Oct.	Nov.	Dec.	YTD	FY
2015	1,150,601	1,075,729	1,847,246	1,356,003	1,290,011	1,584,535	1,325,431	880,059	1,572,836	1,300,525	1,279,053	1,324,184	12,082,451	15,986,213
2016	1,227,976	1,229,636	1,954,850	1,484,047	1,491,249	1,700,401	1,311,964	985,081	1,687,110	1,348,452	1,312,715	1,348,363	13,072,314	17,081,844
YTY (%)	6.7	14.3	5.8	9.4	15.6	7.3	-1.0	11.9	7.3	3.7	2.6	1.8	8.2	6.9

Comment: In Sept. the car sales increase by 7,3%. 2016 forecast is an increase of 6,9%.

Trend FY 2017 : 17,400,000 1.9

Car Sales Forecast : EUROPE_PC Sept. 2016 - Car

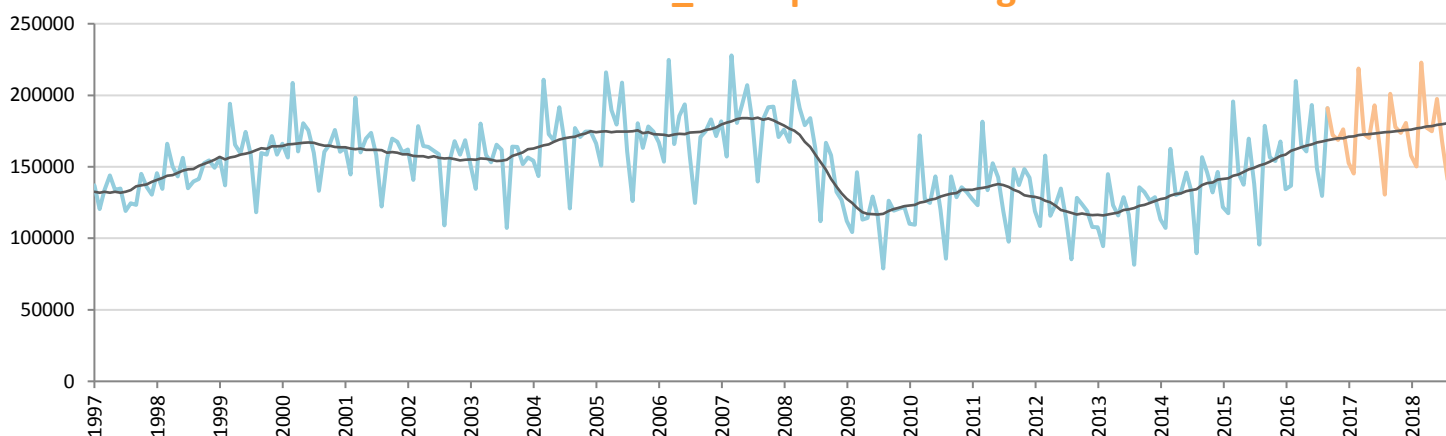


Data processing and forecast by CORAM

CORAM

	Jan.	Feb.	March	April	May	June	July	Aug.	Sept.	Oct.	Nov.	Dec.	YTD	FY
2015	1,028,796	958,239	1,651,528	1,210,374	1,152,509	1,414,756	1,187,442	784,483	1,394,223	1,144,109	1,124,964	1,156,489	10,782,350	14,207,912
2016	1,093,565	1,092,825	1,744,986	1,318,820	1,330,599	1,507,303	1,163,087	855,466	1,496,206	1,176,202	1,143,861	1,172,264	11,602,857	15,095,184
YTY (%)	6.3	14.0	5.7	9.0	15.5	6.5	-2.1	9.0	7.3	2.8	1.7	1.4	7.6	6.2

Car Sales Forecast : EUROPE_PC Sept. 2016 - Light Com. Veh.

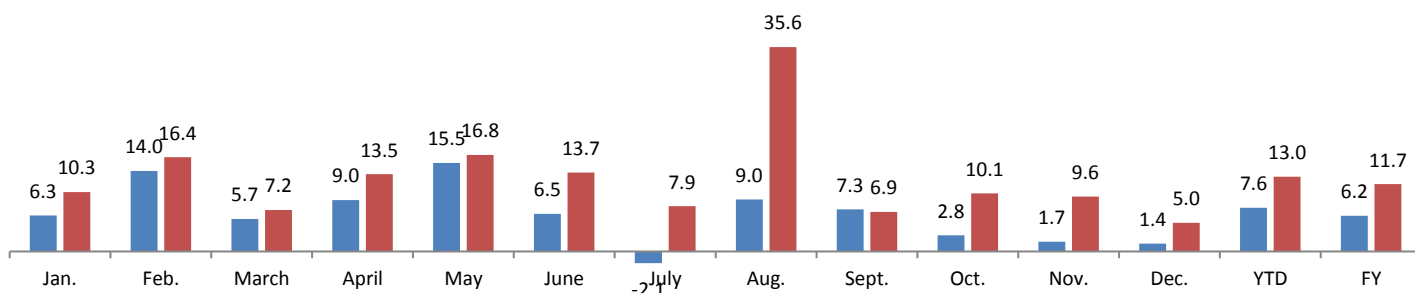


Data processing and forecast by CORAM

CORAM

	Jan.	Feb.	March	April	May	June	July	Aug.	Sept.	Oct.	Nov.	Dec.	YTD	FY
2015	121,805	117,490	195,718	145,629	137,502	169,779	137,989	95,576	178,613	156,416	154,089	167,695	1,300,101	1,778,301
2016	134,411	136,811	209,864	165,227	160,650	193,098	148,877	129,615	190,904	172,250	168,854	176,099	1,469,457	1,986,660
YTY (%)	10.3	16.4	7.2	13.5	16.8	13.7	7.9	35.6	6.9	10.1	9.6	5.0	13.0	11.7

YTY variations



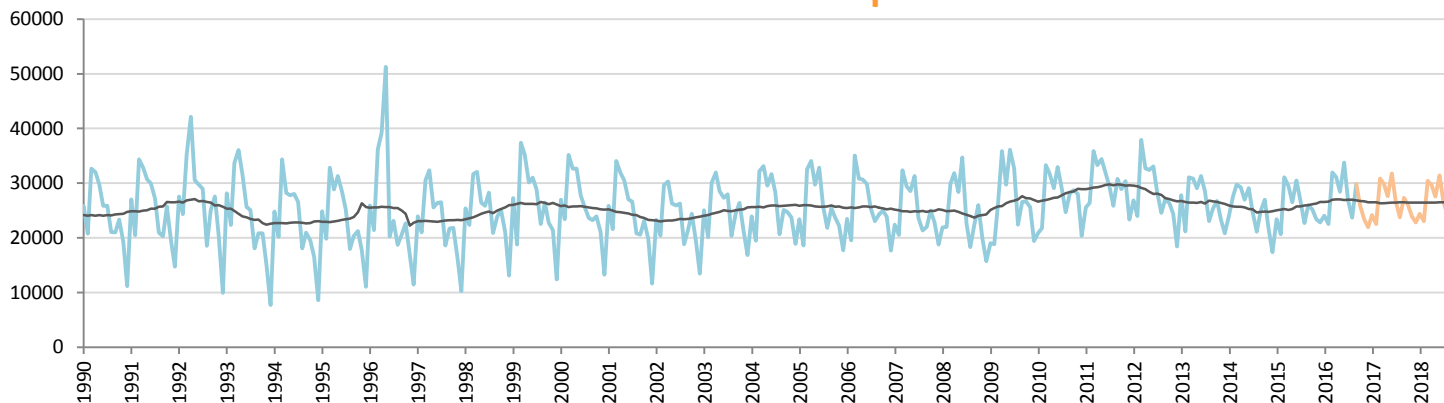
Car Sales Forecast : AUSTRIA Sept. 2016

Total	Jan.	Feb.	March	April	May	June	July	Aug.	Sept.	Oct.	Nov.	Dec.	YTD	FY
2015	25,601	22,757	34,114	32,642	29,113	33,489	29,974	25,093	28,955	28,083	26,176	25,420	261,738	341,417
2016	26,304	25,338	35,501	34,442	31,282	37,469	29,691	27,116	32,706	29,133	26,473	24,924	279,849	360,379
YTY (%)	2.7	11.3	4.1	5.5	7.5	11.9	-0.9	8.1	13.0	3.7	1.1	-2.0	6.9	5.6

Comment: In Sept. the car sales increase by 13%. 2016 forecast is an increase of 5,6%.

Trend FY 2017 : 357,000 -0.9

Car Sales Forecast : AUSTRIA Sept. 2016 - Car

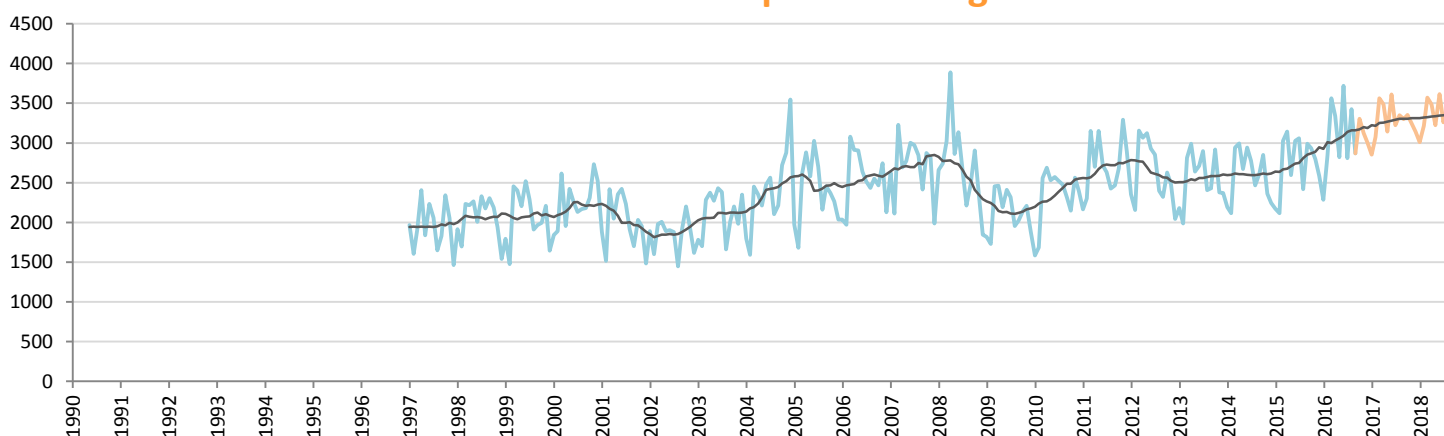


Data processing and forecast by CORAM

CORAM

	Jan.	Feb.	March	April	May	June	July	Aug.	Sept.	Oct.	Nov.	Dec.	YTD	FY
2015	23,427	20,641	31,086	29,500	26,517	30,462	26,917	22,677	25,966	25,149	23,381	22,832	237,193	308,555
2016	24,019	22,495	31,941	31,102	28,462	33,751	26,882	23,690	29,836	25,828	23,348	21,920	252,178	323,275
YTY (%)	2.5	9.0	2.8	5.4	7.3	10.8	-0.1	4.5	14.9	2.7	-0.1	-4.0	6.3	4.8

Car Sales Forecast : AUSTRIA Sept. 2016 - Light Com. Veh.

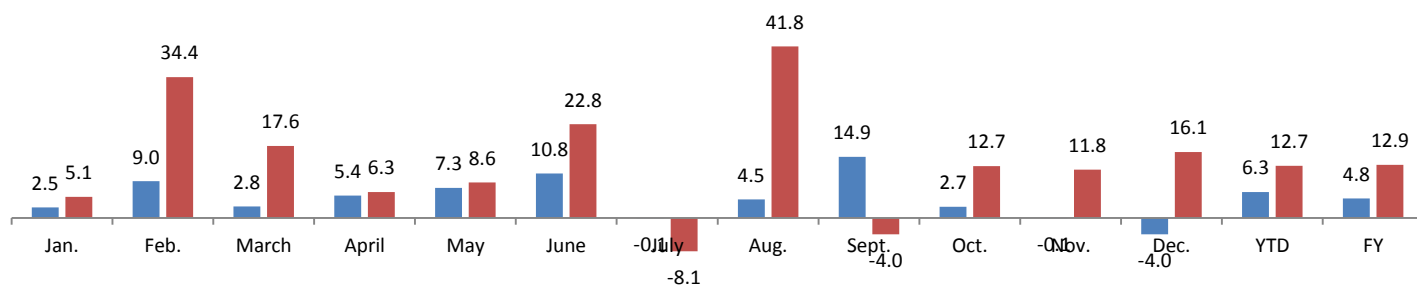


Data processing and forecast by CORAM

CORAM

	Jan.	Feb.	March	April	May	June	July	Aug.	Sept.	Oct.	Nov.	Dec.	YTD	FY
2015	2,174	2,116	3,028	3,142	2,596	3,027	3,057	2,416	2,989	2,934	2,795	2,588	24,545	32,862
2016	2,285	2,843	3,560	3,340	2,820	3,718	2,809	3,426	2,870	3,305	3,125	3,004	27,671	37,105
YTY (%)	5.1	34.4	17.6	6.3	8.6	22.8	-8.1	41.8	-4.0	12.7	11.8	16.1	12.7	12.9

YTY variations



Data source: ACEA. Data processing and forecast by CORAM.

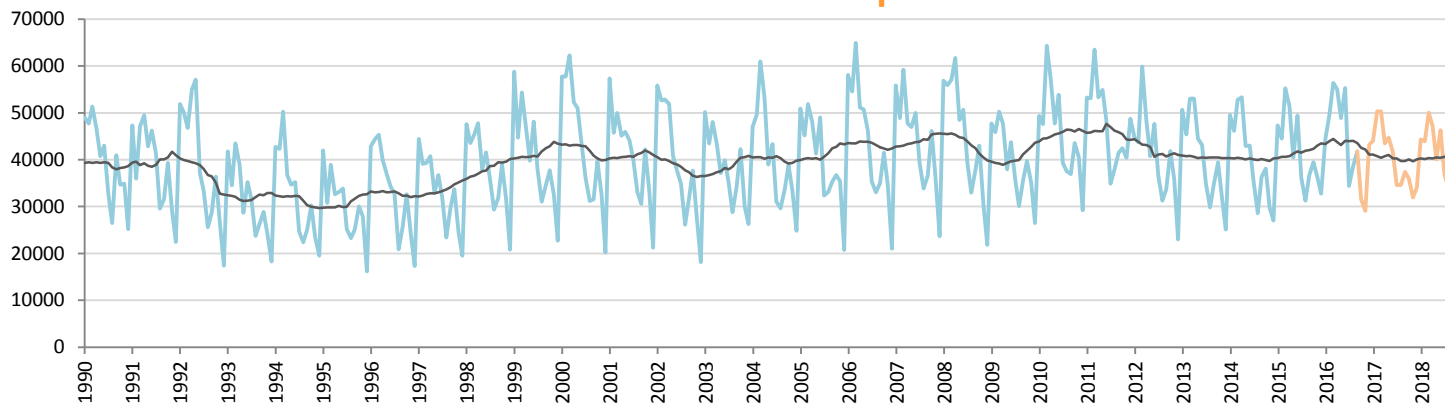
Car Sales Forecast : BELGIUM Sept. 2016

Total	Jan.	Feb.	March	April	May	June	July	Aug.	Sept.	Oct.	Nov.	Dec.	YTD	FY
2015	52,916	49,591	61,476	57,680	45,867	55,305	40,474	35,209	41,234	44,588	40,808	37,126	439,752	562,274
2016	50,363	55,643	62,998	61,097	54,860	62,484	38,781	43,833	47,120	37,315	34,136	47,742	477,179	596,372
YTY (%)	-4.8	12.2	2.5	5.9	19.6	13.0	-4.2	24.5	14.3	-16.3	-16.4	28.6	8.5	6.1

Comment: In Sept. the car sales increase by 14,3%. 2016 forecast is an increase of 6,1%.

Trend FY 2017 : 555,000 -6.9

Car Sales Forecast : BELGIUM Sept. 2016 - Car

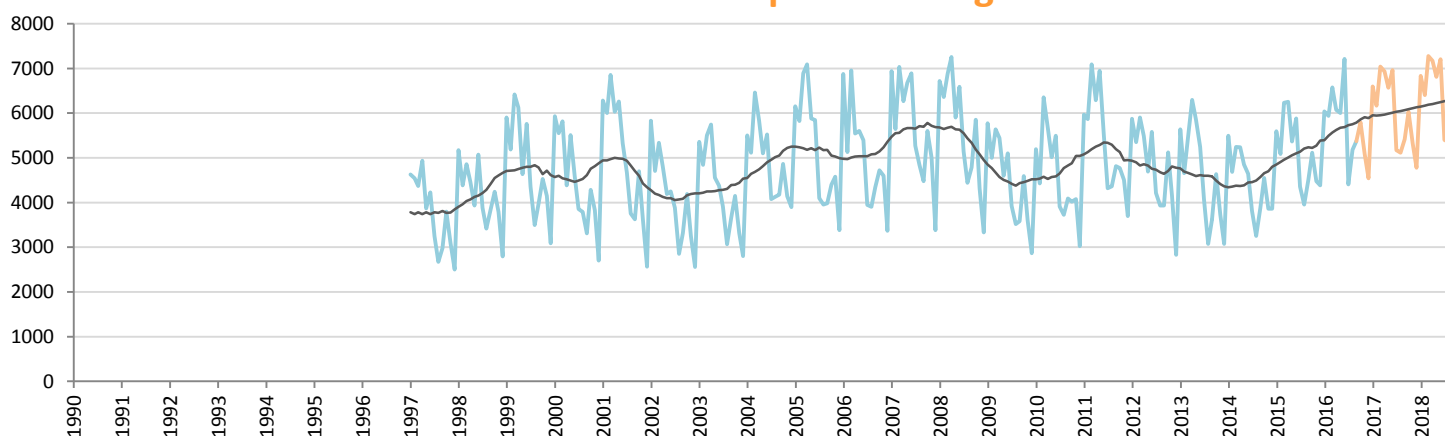


Data processing and forecast by CORAM

CORAM

	Jan.	Feb.	March	April	May	June	July	Aug.	Sept.	Oct.	Nov.	Dec.	YTD	FY
2015	47,324	44,504	55,245	51,423	40,502	49,426	36,121	31,252	36,725	39,474	36,329	32,741	392,522	501,066
2016	44,326	49,707	56,423	55,022	48,856	55,273	34,373	38,655	41,748	31,519	29,047	43,202	424,383	528,150
YTY (%)	-6.3	11.7	2.1	7.0	20.6	11.8	-4.8	23.7	13.7	-20.2	-20.0	31.9	8.1	5.4

Car Sales Forecast : BELGIUM Sept. 2016 - Light Com. Veh.

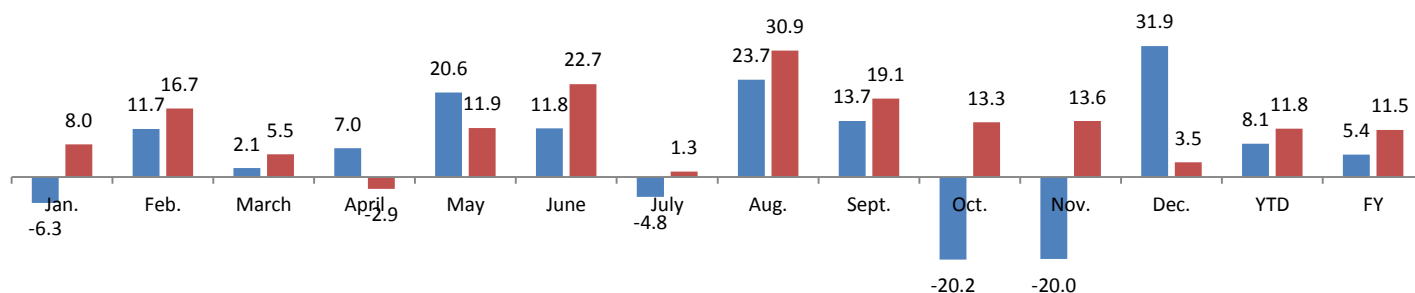


Data processing and forecast by CORAM

CORAM

	Jan.	Feb.	March	April	May	June	July	Aug.	Sept.	Oct.	Nov.	Dec.	YTD	FY
2015	5,592	5,087	6,231	6,257	5,365	5,879	4,353	3,957	4,509	5,114	4,479	4,385	47,230	61,208
2016	6,037	5,936	6,575	6,075	6,004	7,211	4,408	5,178	5,372	5,796	5,089	4,540	52,796	68,222
YTY (%)	8.0	16.7	5.5	-2.9	11.9	22.7	1.3	30.9	19.1	13.3	13.6	3.5	11.8	11.5

YTY variations



Data source: ACEA. Data processing and forecast by CORAM.

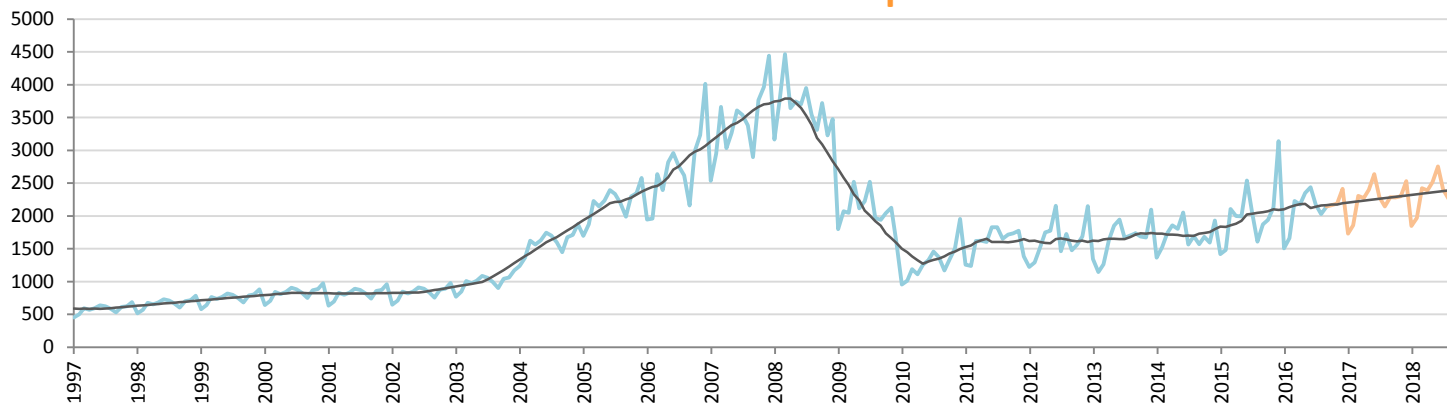
Car Sales Forecast : BULGARIA Sept. 2016

Total	Jan.	Feb.	March	April	May	June	July	Aug.	Sept.	Oct.	Nov.	Dec.	YTD	FY
2015	1,790	1,779	2,555	2,318	2,306	3,051	2,421	1,899	2,283	2,284	2,606	3,722	20,402	29,014
2016	1,785	2,056	2,715	2,542	2,670	2,893	2,552	2,369	2,513	2,578	2,599	2,894	22,095	30,166
YTY (%)	-0.3	15.6	6.3	9.7	15.8	-5.2	5.4	24.7	10.1	12.9	-0.3	-22.2	8.3	4.0

Comment: In Sept. the car sales increase by 10,1%. 2016 forecast is an increase of 4%.

Trend FY 2017 : 31,700 5.1

Car Sales Forecast : BULGARIA Sept. 2016 - Car

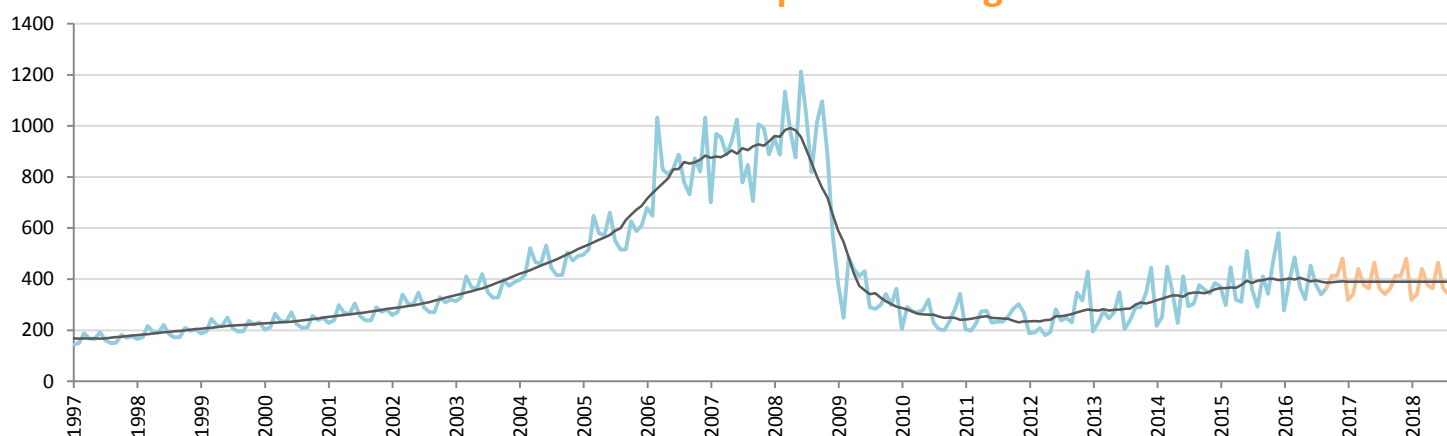


Data processing and forecast by CORAM

CORAM

	Jan.	Feb.	March	April	May	June	July	Aug.	Sept.	Oct.	Nov.	Dec.	YTD	FY
2015	1,419	1,481	2,108	1,998	1,995	2,540	2,061	1,607	1,872	1,941	2,130	3,141	17,081	24,293
2016	1,508	1,661	2,230	2,173	2,349	2,440	2,172	2,029	2,147	2,164	2,186	2,414	18,709	25,473
YTY (%)	6.3	12.2	5.8	8.8	17.7	-3.9	5.4	26.3	14.7	11.5	2.7	-23.1	9.5	4.9

Car Sales Forecast : BULGARIA Sept. 2016 - Light Com. Veh.

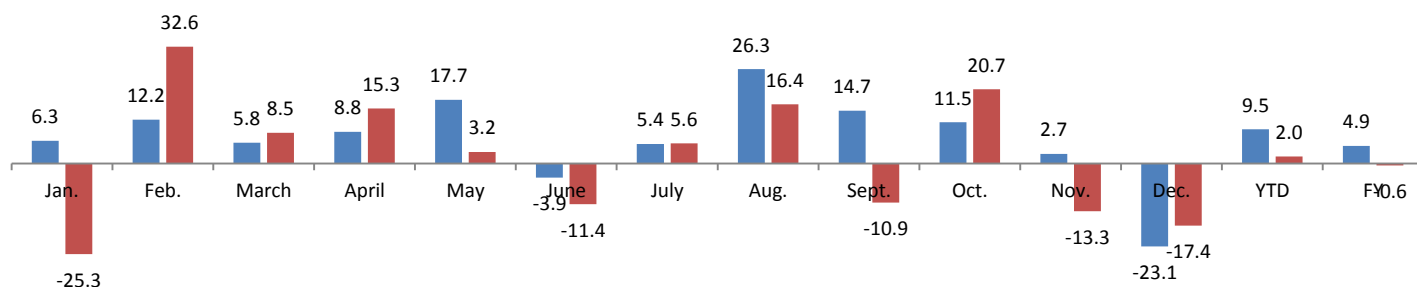


Data processing and forecast by CORAM

CORAM

	Jan.	Feb.	March	April	May	June	July	Aug.	Sept.	Oct.	Nov.	Dec.	YTD	FY
2015	371	298	447	320	311	511	360	292	411	343	476	581	3,321	4,721
2016	277	395	485	369	321	453	380	340	366	414	413	480	3,386	4,693
YTY (%)	-25.3	32.6	8.5	15.3	3.2	-11.4	5.6	16.4	-10.9	20.7	-13.3	-17.4	2.0	-0.6

YTY variations



Data source: ACEA. Data processing and forecast by CORAM.

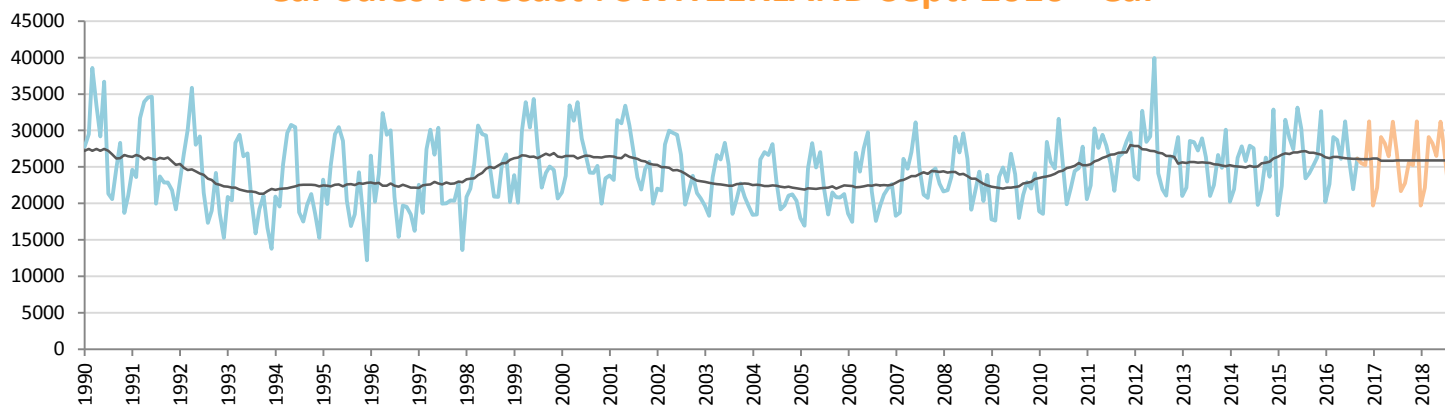
Car Sales Forecast : SWITZERLAND Sept. 2016

Total	Jan.	Feb.	March	April	May	June	July	Aug.	Sept.	Oct.	Nov.	Dec.	YTD	FY
2015	20,682	24,732	34,558	31,566	30,039	36,230	32,709	25,697	26,680	27,685	28,974	35,250	262,893	354,802
2016	22,557	25,041	31,868	31,582	28,552	34,149	28,405	24,277	28,673	27,943	27,816	33,743	255,104	344,607
YTY (%)	9.1	1.2	-7.8	0.1	-5.0	-5.7	-13.2	-5.5	7.5	0.9	-4.0	-4.3	-3.0	-2.9

Comment: In Sept. the car sales increase by 7,5%. 2016 forecast is a decrease of 2,9%.

Trend FY 2017 : 341,000 -1.0

Car Sales Forecast : SWITZERLAND Sept. 2016 - Car

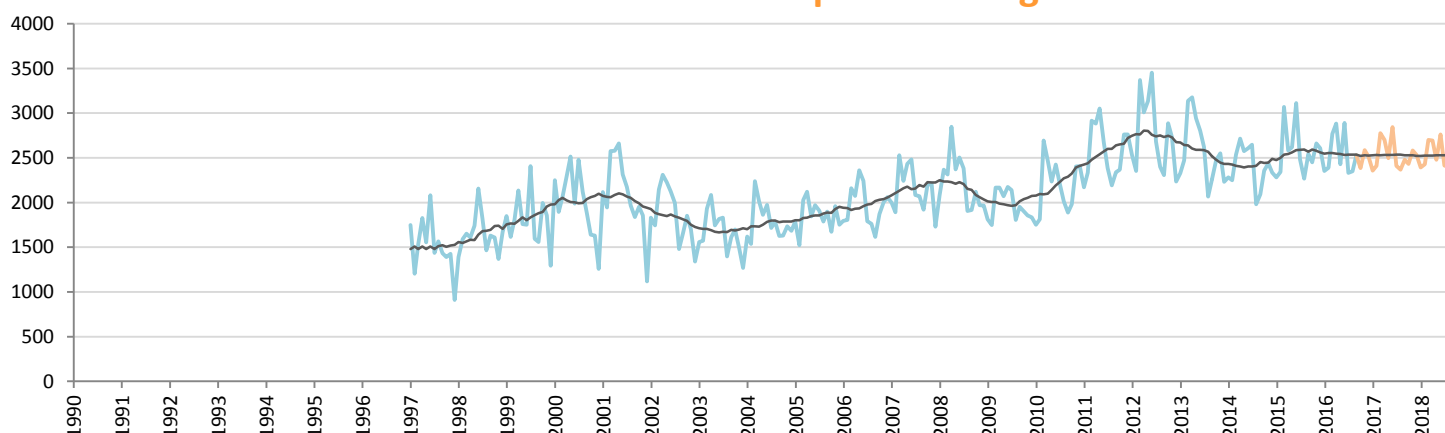


Data processing and forecast by CORAM

CORAM

	Jan.	Feb.	March	April	May	June	July	Aug.	Sept.	Oct.	Nov.	Dec.	YTD	FY
2015	18,400	22,388	31,487	28,982	27,422	33,119	30,228	23,431	24,137	25,236	26,312	32,642	239,594	323,784
2016	20,205	22,653	29,099	28,698	26,123	31,259	26,074	21,927	26,145	25,558	25,229	31,228	232,183	314,198
YTY (%)	9.8	1.2	-7.6	-1.0	-4.7	-5.6	-13.7	-6.4	8.3	1.3	-4.1	-4.3	-3.1	-3.0

Car Sales Forecast : SWITZERLAND Sept. 2016 - Light Com. Veh.

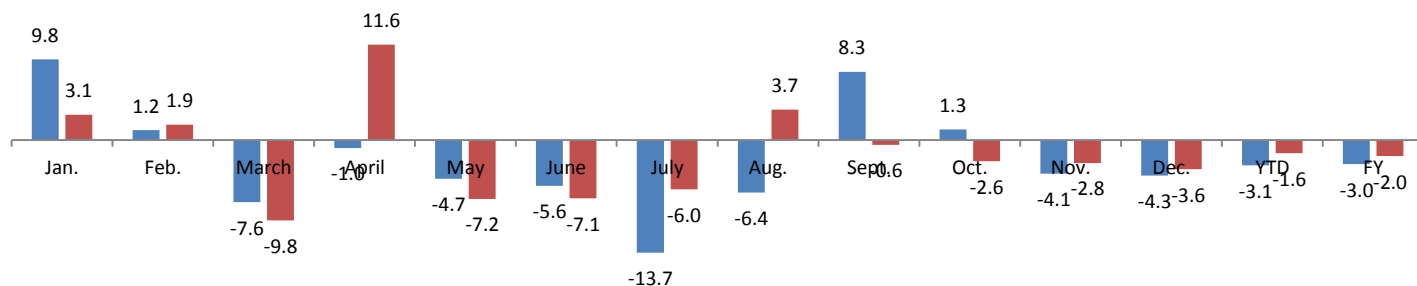


Data processing and forecast by CORAM

CORAM

	Jan.	Feb.	March	April	May	June	July	Aug.	Sept.	Oct.	Nov.	Dec.	YTD	FY
2015	2,282	2,344	3,071	2,584	2,617	3,111	2,481	2,266	2,543	2,449	2,662	2,608	23,299	31,018
2016	2,352	2,388	2,769	2,884	2,429	2,890	2,331	2,350	2,528	2,385	2,587	2,515	22,921	30,408
YTY (%)	3.1	1.9	-9.8	11.6	-7.2	-7.1	-6.0	3.7	-0.6	-2.6	-2.8	-3.6	-1.6	-2.0

YTY variations



Data source: ACEA. Data processing and forecast by CORAM.

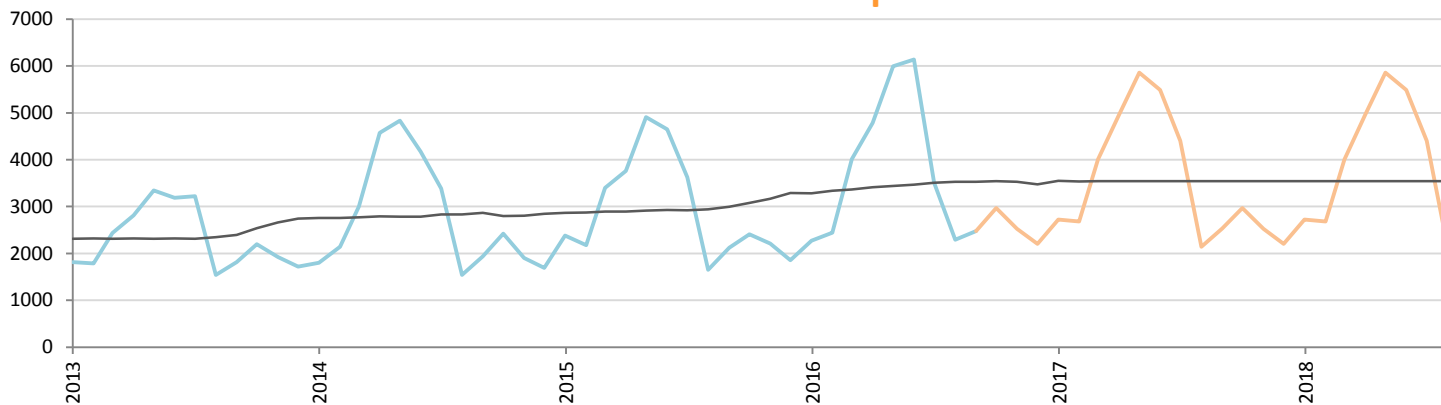
Car Sales Forecast : CROATIA Sept. 2016

Total	Jan.	Feb.	March	April	May	June	July	Aug.	Sept.	Oct.	Nov.	Dec.	YTD	FY
2015	2,785	2,647	3,972	4,401	5,601	5,250	4,349	1,955	2,656	3,051	2,832	2,356	33,616	41,855
2016	2,797	3,007	4,649	5,467	6,815	6,967	4,425	2,945	3,088	3,696	3,255	2,932	40,160	50,043
YTY (%)	0.4	13.6	17.0	24.2	21.7	32.7	1.7	50.6	16.3	21.1	14.9	24.4	19.5	19.6

Comment: In Sept. the car sales increase by 16,3%. 2016 forecast is an increase of 19,6%.

Trend FY 2017 : 51,200 2.3

Car Sales Forecast : CROATIA Sept. 2016 - Car

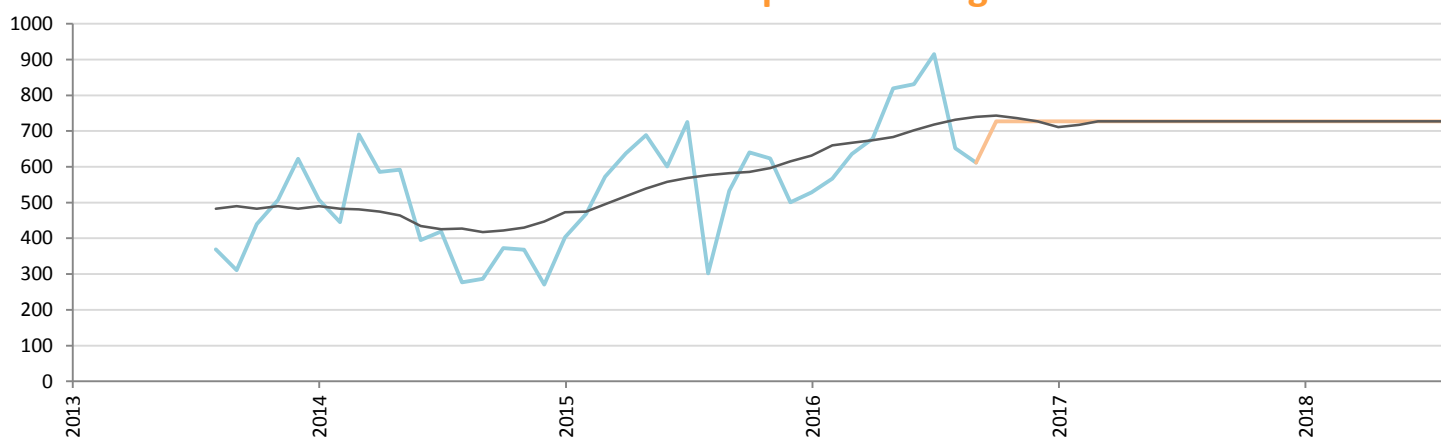


Data processing and forecast by CORAM

CORAM

	Jan.	Feb.	March	April	May	June	July	Aug.	Sept.	Oct.	Nov.	Dec.	YTD	FY
2015	2,382	2,179	3,400	3,763	4,912	4,649	3,624	1,653	2,123	2,411	2,209	1,855	28,685	35,160
2016	2,269	2,440	4,013	4,788	5,996	6,136	3,510	2,293	2,476	2,969	2,528	2,204	33,921	41,622
YTY (%)	-4.7	12.0	18.0	27.2	22.1	32.0	-3.1	38.7	16.6	23.1	14.4	18.8	18.3	18.4

Car Sales Forecast : CROATIA Sept. 2016 - Light Com. Veh.

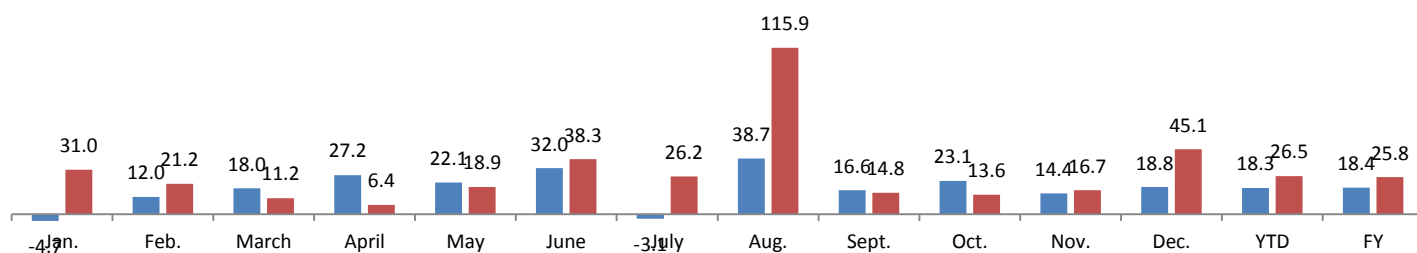


Data processing and forecast by CORAM

CORAM

	Jan.	Feb.	March	April	May	June	July	Aug.	Sept.	Oct.	Nov.	Dec.	YTD	FY
2015	403	468	572	638	689	601	725	302	533	640	623	501	4,931	6,695
2016	528	567	636	679	819	831	915	652	612	727	727	727	6,239	8,421
YTY (%)	31.0	21.2	11.2	6.4	18.9	38.3	26.2	115.9	14.8	13.6	16.7	45.1	26.5	25.8

YTY variations



Data source: ACEA. Data processing and forecast by CORAM.

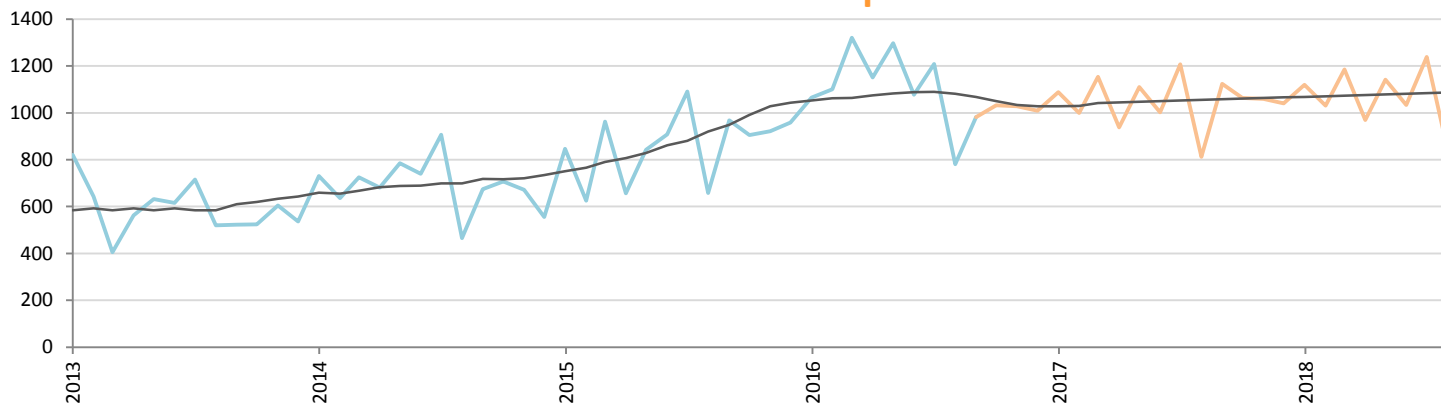
Car Sales Forecast : CYPRUS Sept. 2016

Total	Jan.	Feb.	March	April	May	June	July	Aug.	Sept.	Oct.	Nov.	Dec.	YTD	FY
2015	905	714	1,057	753	987	1,044	1,257	711	1,177	1,049	1,050	1,083	8,605	11,787
2016	1,180	1,248	1,449	1,260	1,456	1,350	1,361	908	1,162	1,198	1,195	1,179	11,374	14,946
YTY (%)	30.4	74.8	37.1	67.3	47.5	29.3	8.3	27.7	-1.3	14.2	13.8	8.9	32.2	26.8

Comment: In Sept. the car sales decrease by 1,3%. 2016 forecast is an increase of 26,8%.

Trend FY 2017 : 14,800 -1.0

Car Sales Forecast : CYPRUS Sept. 2016 - Car

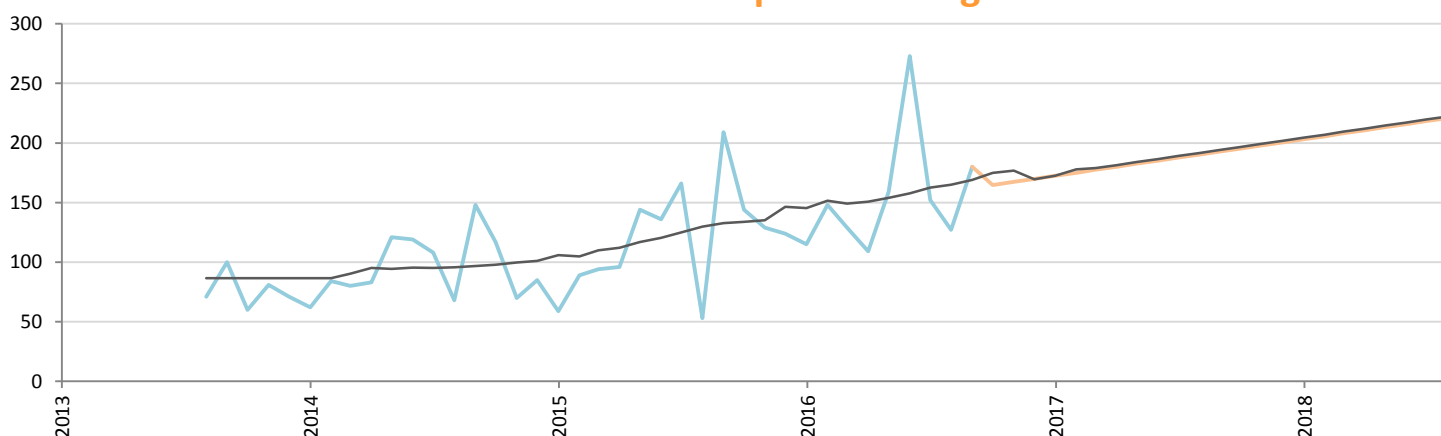


Data processing and forecast by CORAM

CORAM

	Jan.	Feb.	March	April	May	June	July	Aug.	Sept.	Oct.	Nov.	Dec.	YTD	FY
2015	846	625	963	657	843	908	1,091	658	968	905	921	959	7,559	10,344
2016	1,065	1,100	1,320	1,151	1,297	1,077	1,209	781	982	1,033	1,028	1,009	9,982	13,052
YTY (%)	25.9	76.0	37.1	75.2	53.9	18.6	10.8	18.7	1.4	14.1	11.6	5.2	32.1	26.2

Car Sales Forecast : CYPRUS Sept. 2016 - Light Com. Veh.

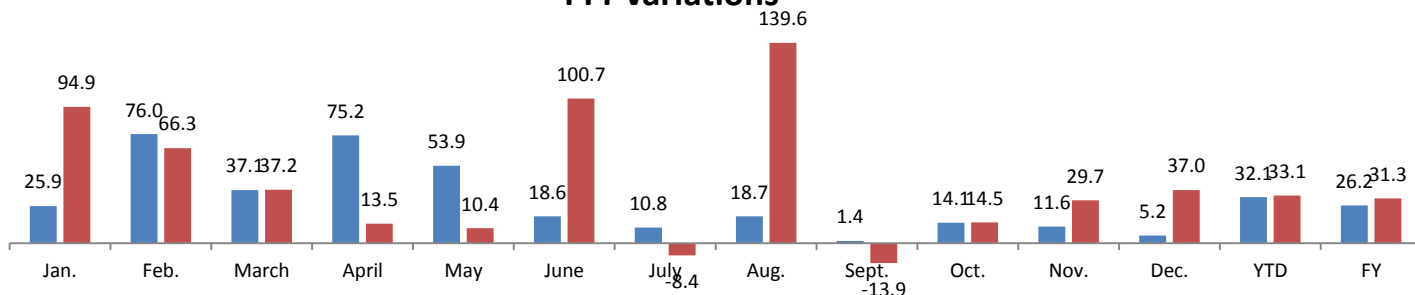


Data processing and forecast by CORAM

CORAM

	Jan.	Feb.	March	April	May	June	July	Aug.	Sept.	Oct.	Nov.	Dec.	YTD	FY
2015	59	89	94	96	144	136	166	53	209	144	129	124	1,046	1,443
2016	115	148	129	109	159	273	152	127	180	165	167	170	1,392	1,894
YTY (%)	94.9	66.3	37.2	13.5	10.4	100.7	-8.4	139.6	-13.9	14.5	29.7	37.0	33.1	31.3

YTY variations



Data source: ACEA. Data processing and forecast by CORAM.

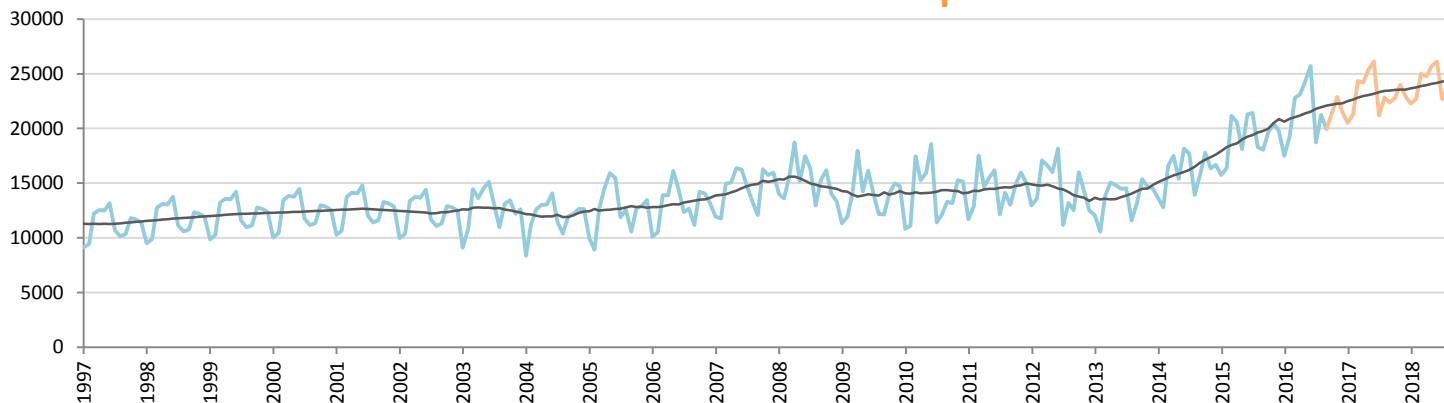
Car Sales Forecast : CZECH REPUBLIC Sept. 2016

Total	Jan.	Feb.	March	April	May	June	July	Aug.	Sept.	Oct.	Nov.	Dec.	YTD	FY
2015	16,784	17,731	22,811	21,985	19,325	22,704	22,652	19,468	19,312	21,416	22,110	21,690	182,772	247,988
2016	18,696	20,680	24,390	24,681	26,092	27,595	20,085	23,100	21,580	23,165	24,790	23,590	206,899	278,444
YTY (%)	11.4	16.6	6.9	12.3	35.0	21.5	-11.3	18.7	11.7	8.2	12.1	8.8	13.2	12.3

Comment: In Sept. the car sales increase by 11,7%. 2016 forecast is an increase of 12,3%.

Trend FY 2017 : 299,000 7.4

Car Sales Forecast : CZECH REPUBLIC Sept. 2016 - Car

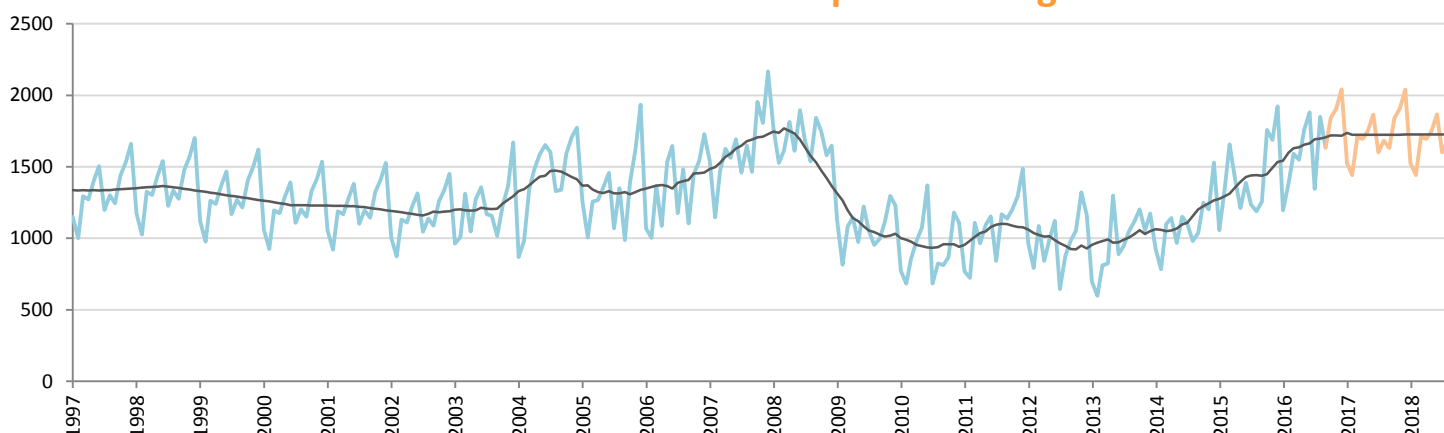


Data processing and forecast by CORAM

CORAM

	Jan.	Feb.	March	April	May	June	July	Aug.	Sept.	Oct.	Nov.	Dec.	YTD	FY
2015	15,727	16,383	21,155	20,568	18,113	21,315	21,415	18,278	18,056	19,658	20,421	19,768	171,010	230,857
2016	17,500	19,299	22,799	23,131	24,335	25,714	18,739	21,251	19,946	21,325	22,886	21,549	192,714	258,474
YTY (%)	11.3	17.8	7.8	12.5	34.4	20.6	-12.5	16.3	10.5	8.5	12.1	9.0	12.7	12.0

Car Sales Forecast : CZECH REPUBLIC Sept. 2016 - Light Com. Veh.

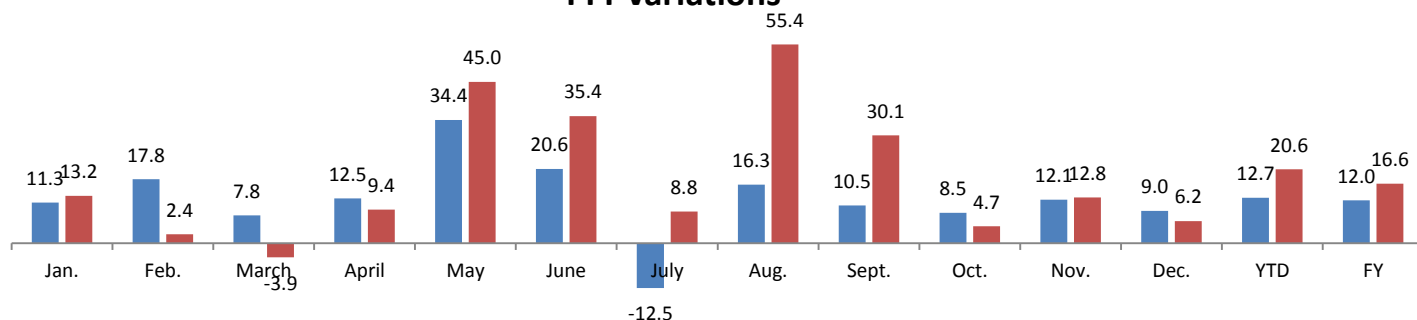


Data processing and forecast by CORAM

CORAM

	Jan.	Feb.	March	April	May	June	July	Aug.	Sept.	Oct.	Nov.	Dec.	YTD	FY
2015	1,057	1,348	1,656	1,417	1,212	1,389	1,237	1,190	1,256	1,758	1,689	1,922	11,762	17,131
2016	1,196	1,381	1,591	1,550	1,757	1,881	1,346	1,849	1,634	1,840	1,904	2,041	14,185	19,970
YTY (%)	13.2	2.4	-3.9	9.4	45.0	35.4	8.8	55.4	30.1	4.7	12.8	6.2	20.6	16.6

YTY variations



Data source: ACEA. Data processing and forecast by CORAM.

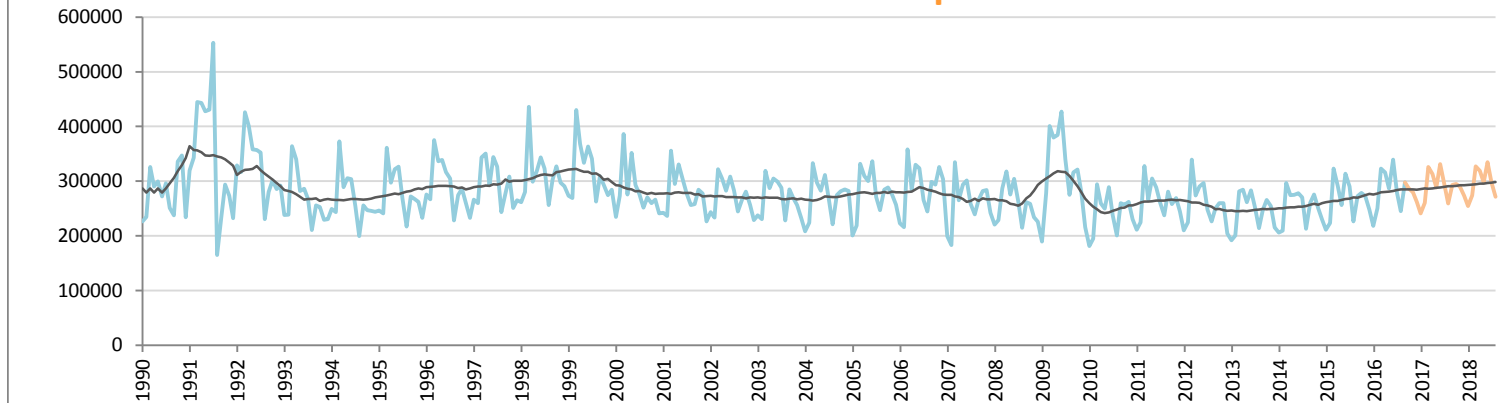
Car Sales Forecast : GERMANY Sept. 2016

Total	Jan.	Feb.	March	April	May	June	July	Aug.	Sept.	Oct.	Nov.	Dec.	YTD	FY
2015	226,514	239,069	345,123	311,597	274,167	336,292	310,285	241,316	291,675	301,513	296,611	269,782	2,576,038	3,443,944
2016	235,334	268,475	345,649	337,952	307,441	365,248	299,059	268,142	318,278	311,792	305,445	286,820	2,745,578	3,649,635
YTY (%)	3.9	12.3	0.2	8.5	12.1	8.6	-3.6	11.1	9.1	3.4	3.0	6.3	6.6	6.0

Comment: In Sept. the car sales increase by 9,1%. 2016 forecast is an increase of 6%.

Trend FY 2017 : 3,750,000 2.8

Car Sales Forecast : GERMANY Sept. 2016 - Car

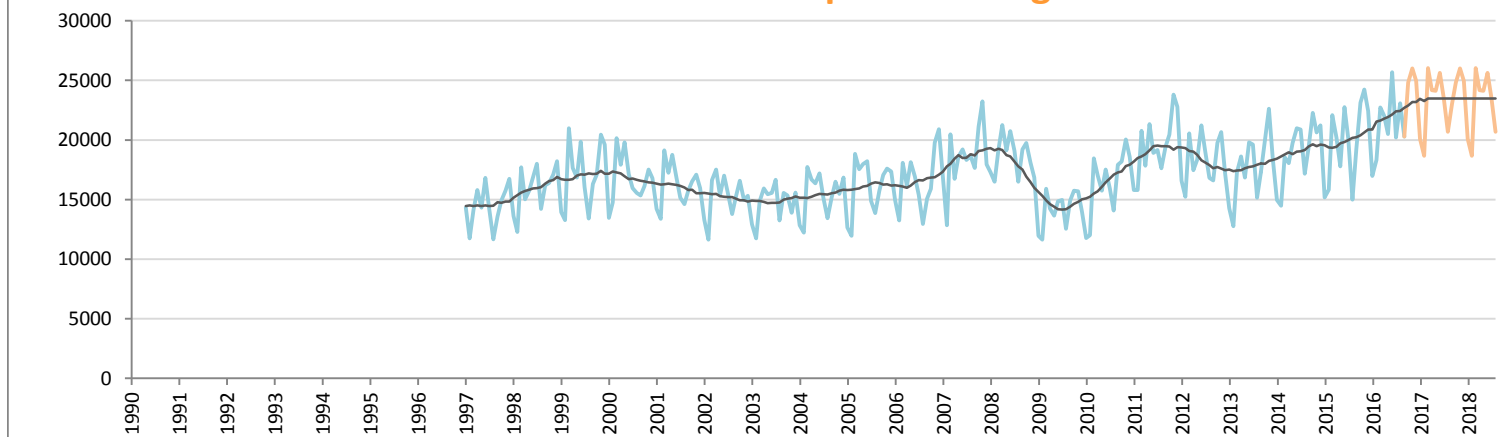


Data processing and forecast by CORAM

CORAM

	Jan.	Feb.	March	April	May	June	July	Aug.	Sept.	Oct.	Nov.	Dec.	YTD	FY
2015	211,337	223,254	323,039	291,395	256,385	313,539	290,196	226,314	272,479	278,372	272,377	247,355	2,407,938	3,206,042
2016	218,365	250,146	322,913	315,921	286,931	339,563	278,866	245,076	298,002	286,964	279,456	261,853	2,555,783	3,384,056
YTY (%)	3.3	12.0	0.0	8.4	11.9	8.3	-3.9	8.3	9.4	3.1	2.6	5.9	6.1	5.6

Car Sales Forecast : GERMANY Sept. 2016 - Light Com. Veh.

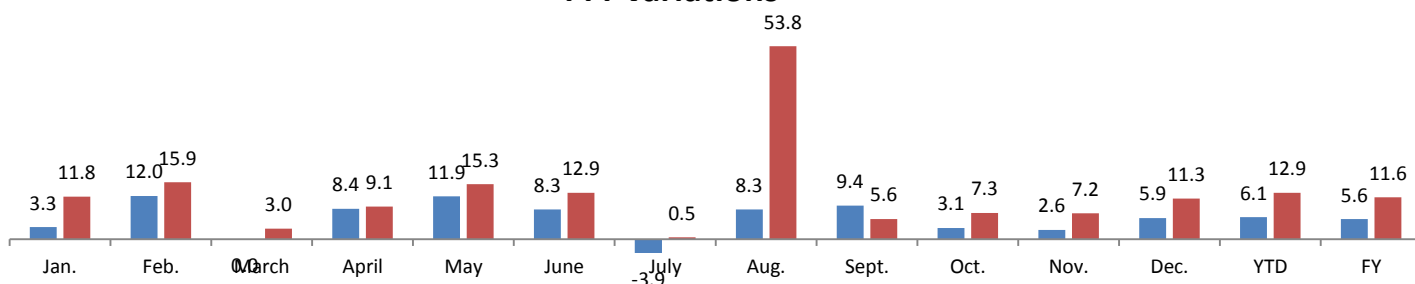


Data processing and forecast by CORAM

CORAM

	Jan.	Feb.	March	April	May	June	July	Aug.	Sept.	Oct.	Nov.	Dec.	YTD	FY
2015	15,177	15,815	22,084	20,202	17,782	22,753	20,089	15,002	19,196	23,141	24,234	22,427	168,100	237,902
2016	16,969	18,329	22,736	22,031	20,510	25,685	20,193	23,066	20,276	24,828	25,989	24,967	189,795	265,579
YTY (%)	11.8	15.9	3.0	9.1	15.3	12.9	0.5	53.8	5.6	7.3	7.2	11.3	12.9	11.6

YTY variations



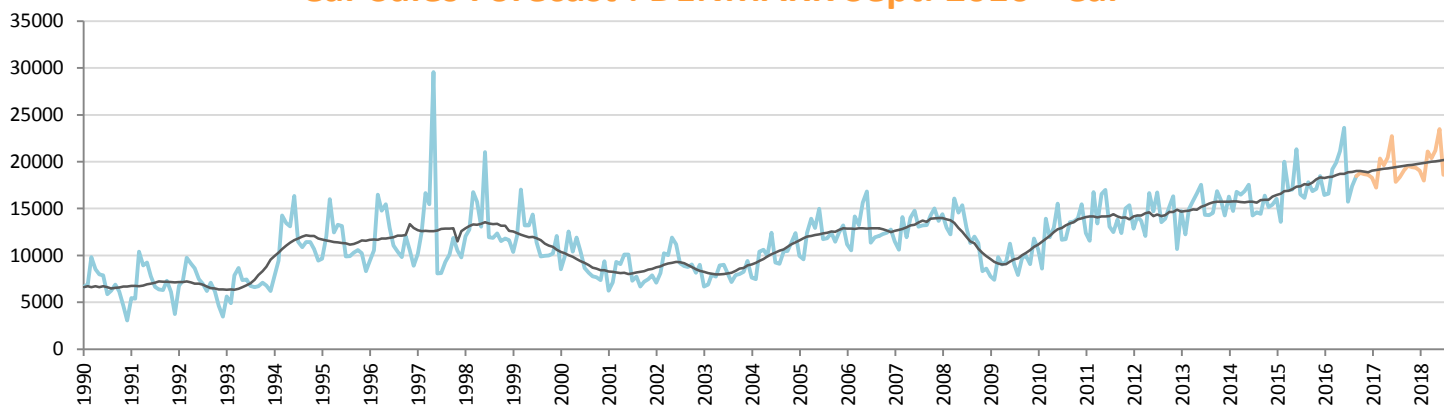
Car Sales Forecast : DENMARK Sept. 2016

Total	Jan.	Feb.	March	April	May	June	July	Aug.	Sept.	Oct.	Nov.	Dec.	YTD	FY
2015	18,323	15,780	23,109	19,634	19,663	24,553	18,460	18,804	20,549	19,676	20,021	21,778	178,875	240,350
2016	19,276	19,502	22,319	23,079	24,371	27,443	17,973	21,217	21,180	22,255	22,246	22,487	196,360	263,348
YTY (%)	5.2	23.6	-3.4	17.5	23.9	11.8	-2.6	12.8	3.1	13.1	11.1	3.3	9.8	9.6

Comment: In Sept. the car sales increase by 3,1%. 2016 forecast is an increase of 9,6%.

Trend FY 2017 : 274,000 4.0

Car Sales Forecast : DENMARK Sept. 2016 - Car

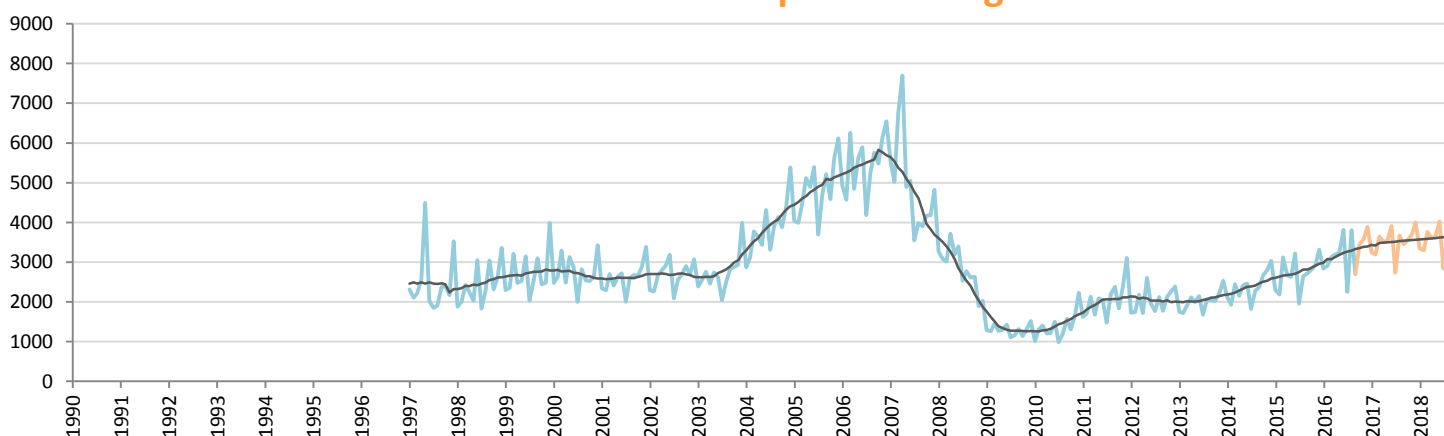


Data processing and forecast by CORAM

CORAM

	Jan.	Feb.	March	April	May	June	July	Aug.	Sept.	Oct.	Nov.	Dec.	YTD	FY
2015	16,025	13,595	19,991	16,966	17,037	21,334	16,507	16,156	17,829	16,872	17,098	18,461	155,440	207,871
2016	16,436	16,595	19,190	19,886	21,141	23,633	15,726	17,414	18,477	18,816	18,670	18,599	168,498	224,583
YTY (%)	2.6	22.1	-4.0	17.2	24.1	10.8	-4.7	7.8	3.6	11.5	9.2	0.7	8.4	8.0

Car Sales Forecast : DENMARK Sept. 2016 - Light Com. Veh.

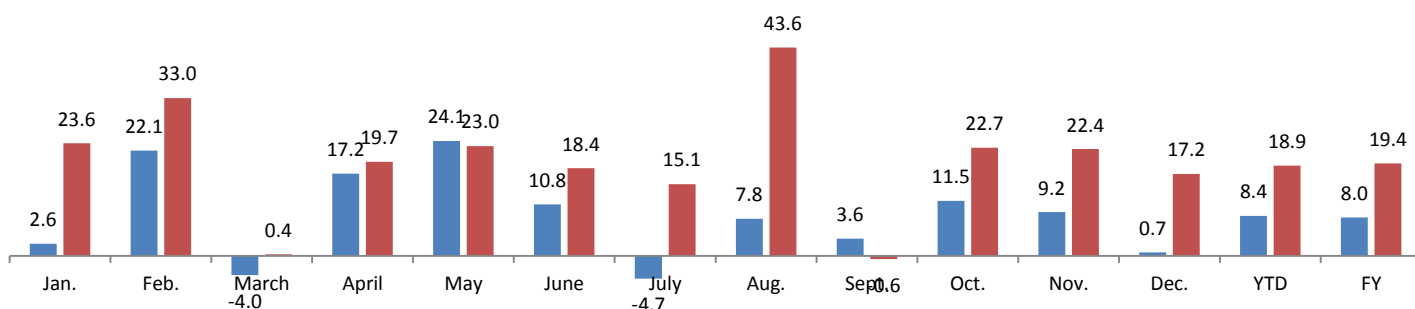


Data processing and forecast by CORAM

CORAM

	Jan.	Feb.	March	April	May	June	July	Aug.	Sept.	Oct.	Nov.	Dec.	YTD	FY
2015	2,298	2,185	3,118	2,668	2,626	3,219	1,953	2,648	2,720	2,804	2,923	3,317	23,435	32,479
2016	2,840	2,907	3,129	3,193	3,230	3,810	2,247	3,803	2,703	3,439	3,576	3,887	27,862	38,765
YTY (%)	23.6	33.0	0.4	19.7	23.0	18.4	15.1	43.6	-0.6	22.7	22.4	17.2	18.9	19.4

YTY variations



Data source: ACEA. Data processing and forecast by CORAM.

Car Sales Forecast : SPAIN Sept. 2016

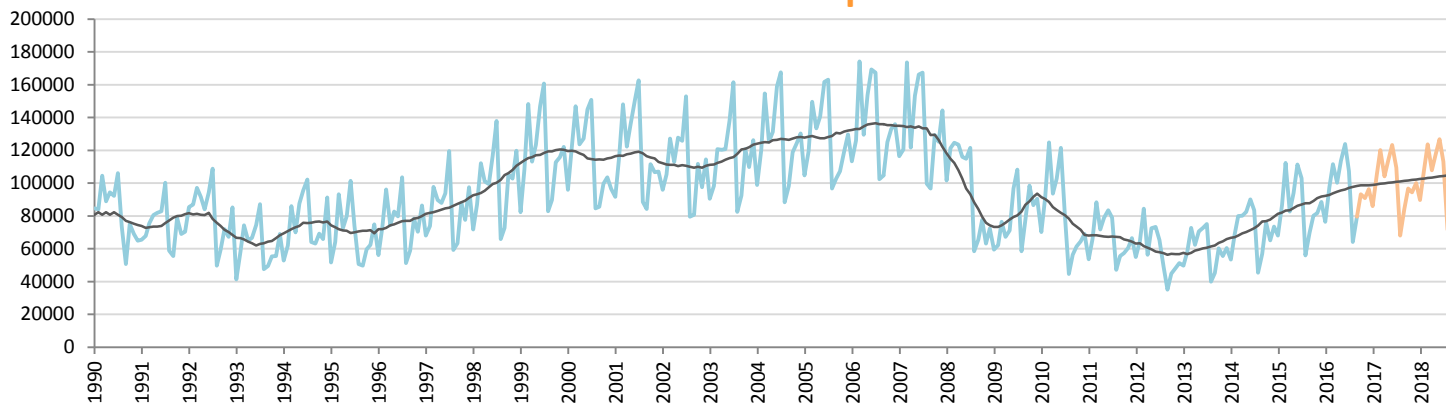
Total	Jan.	Feb.	March	April	May	June	July	Aug.	Sept.	Oct.	Nov.	Dec.	YTD	FY
2015	77,144	97,609	128,095	95,649	107,177	126,271	117,408	64,818	81,878	94,553	95,446	103,081	896,049	1,189,129
2016	86,965	110,370	127,104	115,537	129,351	141,313	122,589	74,638	93,120	110,598	107,091	113,701	1,000,987	1,332,377
YTY (%)	12.7	13.1	-0.8	20.8	20.7	11.9	4.4	15.2	13.7	17.0	12.2	10.3	11.7	12.0

Comment: In Sept. the car sales increase by 13,7%. 2016 forecast is an increase of 12%.

Trend FY 2017 :

1,410,000 5.8

Car Sales Forecast : SPAIN Sept. 2016 - Car

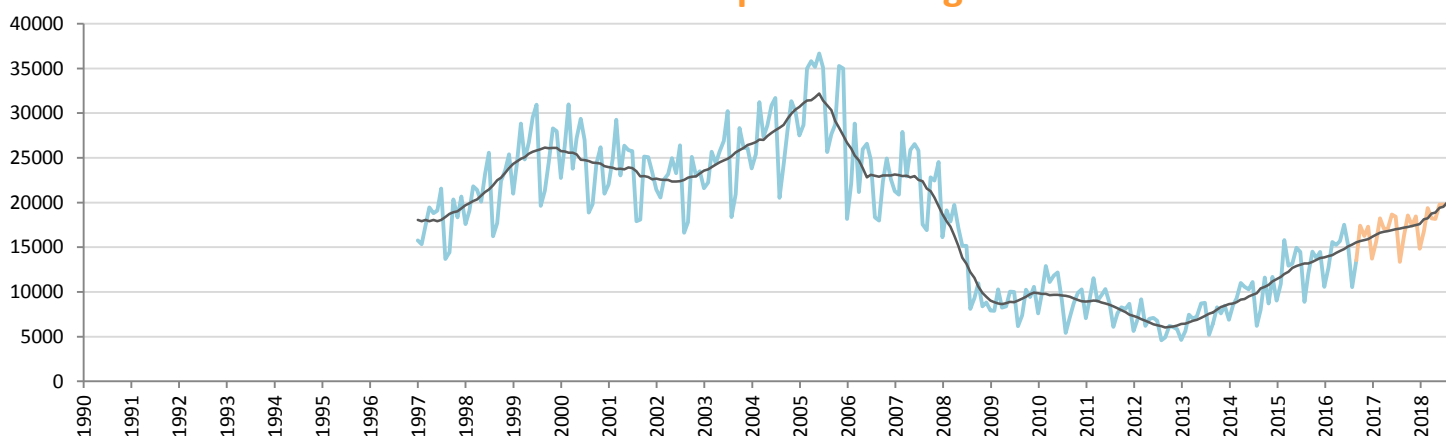


Data processing and forecast by CORAM

CORAM

	Jan.	Feb.	March	April	May	June	July	Aug.	Sept.	Oct.	Nov.	Dec.	YTD	FY
2015	68,119	86,719	112,304	82,716	94,031	111,333	102,932	55,918	69,826	80,055	81,650	88,609	783,898	1,034,212
2016	76,395	97,650	111,512	100,281	113,671	123,790	107,306	64,089	79,591	93,177	90,811	96,386	874,285	1,154,659
YTY (%)	12.1	12.6	-0.7	21.2	20.9	11.2	4.2	14.6	14.0	16.4	11.2	8.8	11.5	11.6

Car Sales Forecast : SPAIN Sept. 2016 - Light Com. Veh.

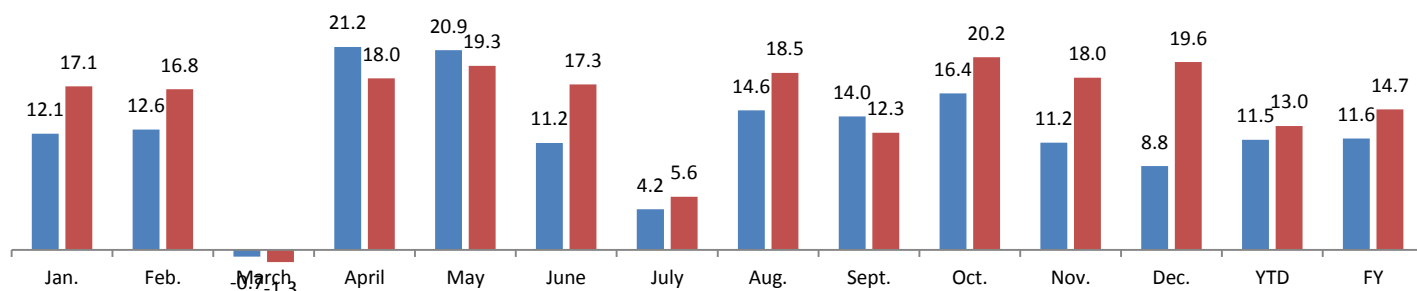


Data processing and forecast by CORAM

CORAM

	Jan.	Feb.	March	April	May	June	July	Aug.	Sept.	Oct.	Nov.	Dec.	YTD	FY
2015	9,025	10,890	15,791	12,933	13,146	14,938	14,476	8,900	12,052	14,498	13,796	14,472	112,151	154,917
2016	10,570	12,720	15,592	15,256	15,680	17,523	15,283	10,549	13,529	17,420	16,280	17,315	126,702	177,718
YTY (%)	17.1	16.8	-1.3	18.0	19.3	17.3	5.6	18.5	12.3	20.2	18.0	19.6	13.0	14.7

YTY variations



Data source: ANFAC. Data processing and forecast by CORAM.

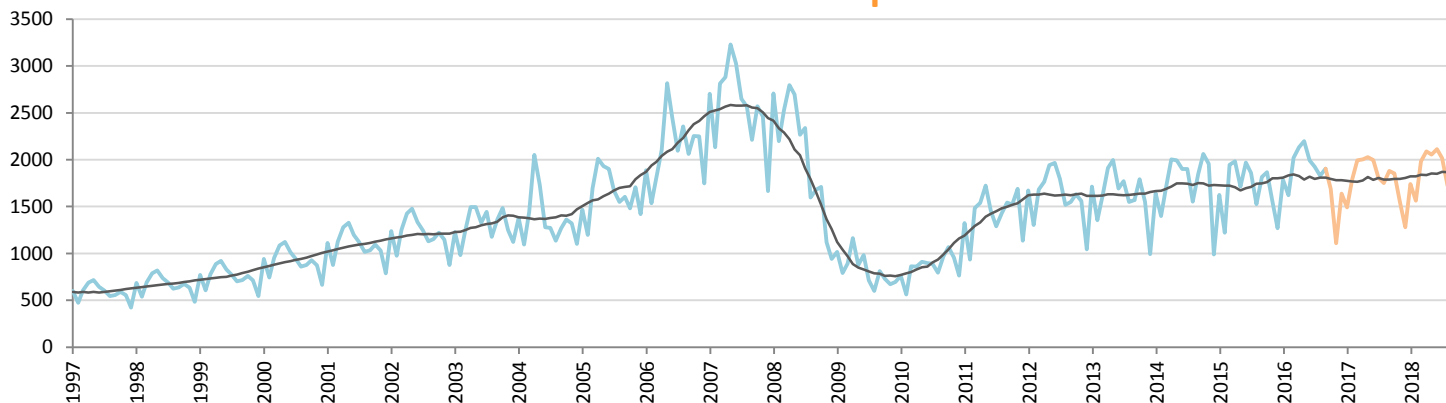
Car Sales Forecast : ESTONIA Sept. 2016

Total	Jan.	Feb.	March	April	May	June	July	Aug.	Sept.	Oct.	Nov.	Dec.	YTD	FY
2015	1,984	1,460	2,309	2,306	1,996	2,234	2,163	1,787	2,181	2,178	1,840	1,490	18,420	23,928
2016	2,120	1,886	2,380	2,484	2,619	2,309	2,215	2,212	2,224	2,071	1,470	1,920	20,449	25,911
YTY (%)	6.9	29.2	3.1	7.7	31.2	3.4	2.4	23.8	2.0	-4.9	-20.1	28.9	11.0	8.3

Comment: In Sept. the car sales increase by 2%. 2016 forecast is an increase of 8,3%.

Trend FY 2017 : 25,400 -2.0

Car Sales Forecast : ESTONIA Sept. 2016 - Car

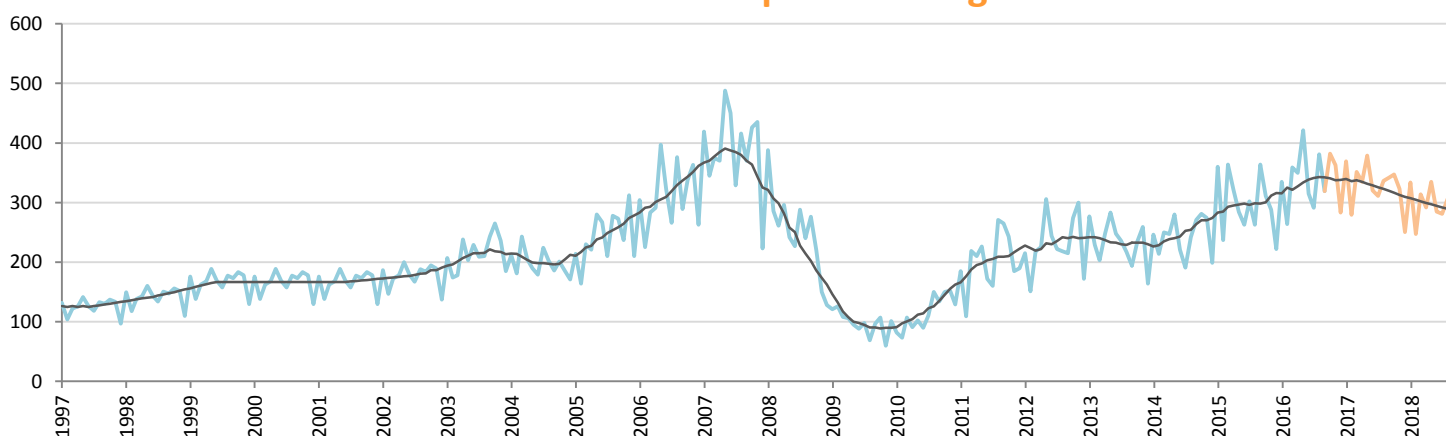


Data processing and forecast by CORAM

CORAM

	Jan.	Feb.	March	April	May	June	July	Aug.	Sept.	Oct.	Nov.	Dec.	YTD	FY
2015	1,624	1,223	1,945	1,984	1,712	1,971	1,861	1,524	1,817	1,867	1,552	1,268	15,661	20,348
2016	1,785	1,622	2,021	2,134	2,198	1,994	1,924	1,831	1,905	1,689	1,107	1,637	17,414	21,847
YTY (%)	9.9	32.6	3.9	7.6	28.4	1.2	3.4	20.1	4.8	-9.5	-28.7	29.1	11.2	7.4

Car Sales Forecast : ESTONIA Sept. 2016 - Light Com. Veh.

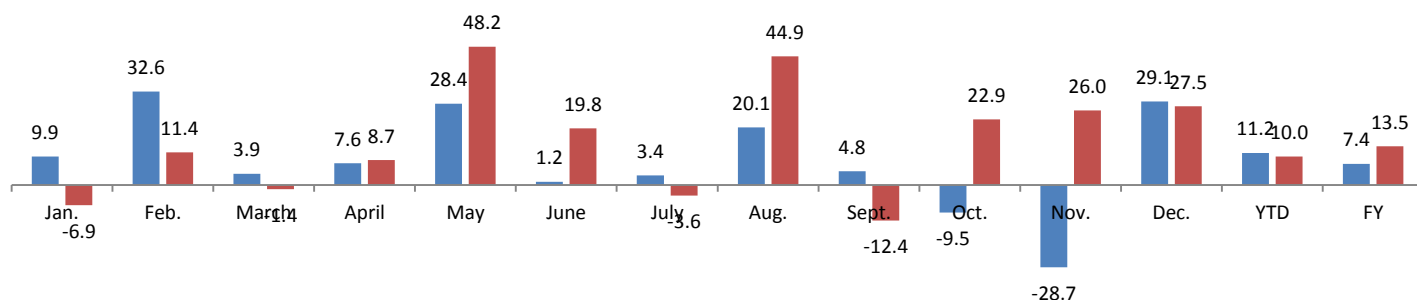


Data processing and forecast by CORAM

CORAM

	Jan.	Feb.	March	April	May	June	July	Aug.	Sept.	Oct.	Nov.	Dec.	YTD	FY
2015	360	237	364	322	284	263	302	263	364	311	288	222	2,759	3,580
2016	335	264	359	350	421	315	291	381	319	382	363	283	3,035	4,063
YTY (%)	-6.9	11.4	-1.4	8.7	48.2	19.8	-3.6	44.9	-12.4	22.9	26.0	27.5	10.0	13.5

YTY variations



Data source: ACEA. Data processing and forecast by CORAM.

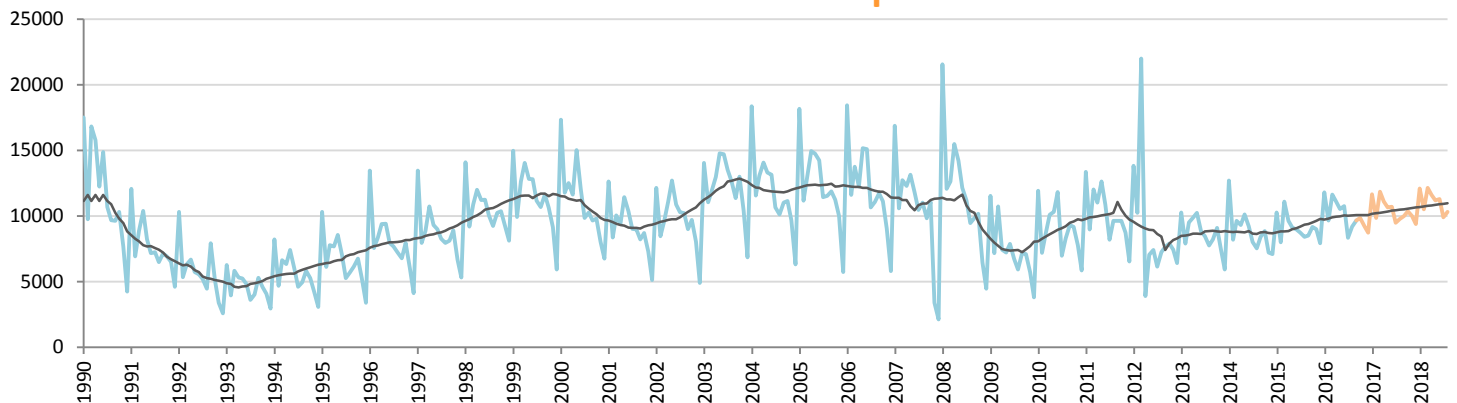
Car Sales Forecast : FINLAND Sept. 2016

Total	Jan.	Feb.	March	April	May	June	July	Aug.	Sept.	Oct.	Nov.	Dec.	YTD	FY
2015	11,227	8,904	12,170	10,598	10,045	9,977	9,480	9,356	9,470	10,126	9,955	8,942	91,227	120,250
2016	12,937	10,640	12,734	12,273	11,589	11,945	9,118	10,507	10,813	11,029	10,345	9,834	102,556	133,764
YTY (%)	15.2	19.5	4.6	15.8	15.4	19.7	-3.8	12.3	14.2	8.9	3.9	10.0	12.4	11.2

Comment: In Sept. the car sales increase by 14,2%. 2016 forecast is an increase of 11,2%.

Trend FY 2017 : 139,000 3.9

Car Sales Forecast : FINLAND Sept. 2016 - Car

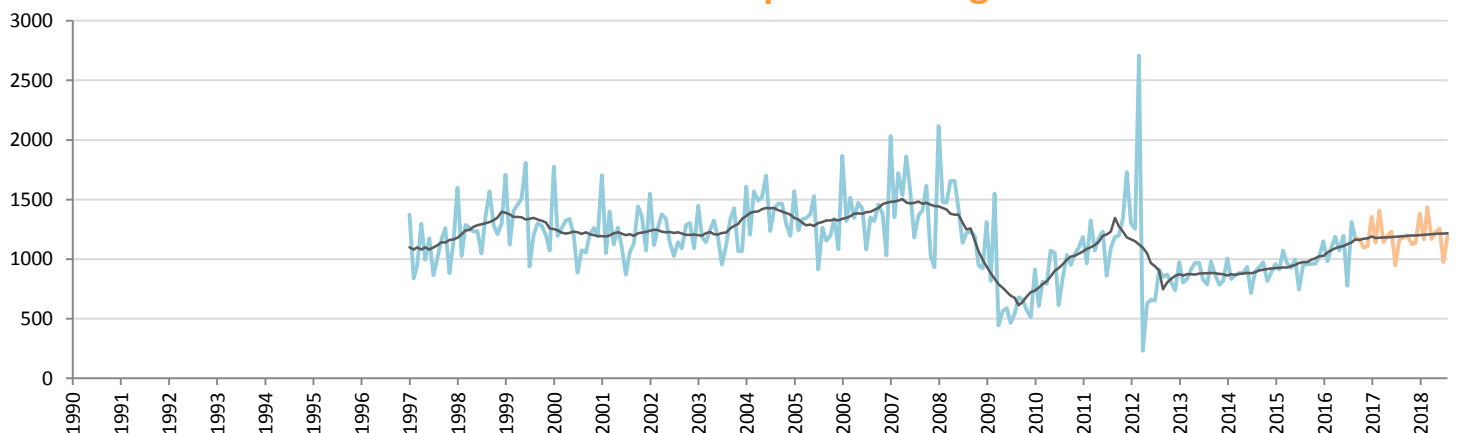


Data processing and forecast by CORAM

CORAM

	Jan.	Feb.	March	April	May	June	July	Aug.	Sept.	Oct.	Nov.	Dec.	YTD	FY
2015	10,268	7,990	11,098	9,637	9,117	8,980	8,736	8,402	8,513	9,166	8,992	7,920	82,741	108,819
2016	11,788	9,656	11,637	11,085	10,518	10,750	8,340	9,196	9,644	9,859	9,247	8,725	92,614	120,445
YTY (%)	14.8	20.9	4.9	15.0	15.4	19.7	-4.5	9.5	13.3	7.6	2.8	10.2	11.9	10.7

Car Sales Forecast : FINLAND Sept. 2016 - Light Com. Veh.

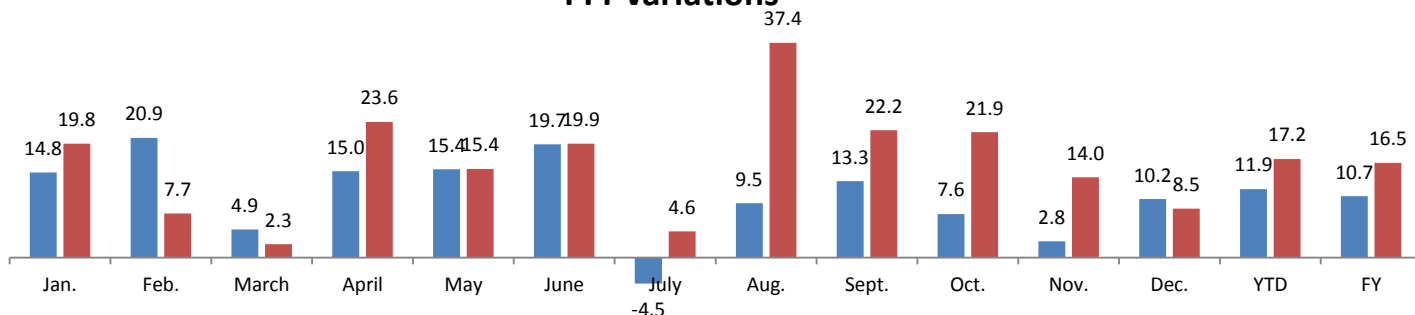


Data processing and forecast by CORAM

CORAM

	Jan.	Feb.	March	April	May	June	July	Aug.	Sept.	Oct.	Nov.	Dec.	YTD	FY
2015	959	914	1,072	961	928	997	744	954	957	960	963	1,022	8,486	11,431
2016	1,149	984	1,097	1,188	1,071	1,195	778	1,311	1,169	1,170	1,098	1,109	9,942	13,318
YTY (%)	19.8	7.7	2.3	23.6	15.4	19.9	4.6	37.4	22.2	21.9	14.0	8.5	17.2	16.5

YTY variations



Data source: ACEA. Data processing and forecast by CORAM.

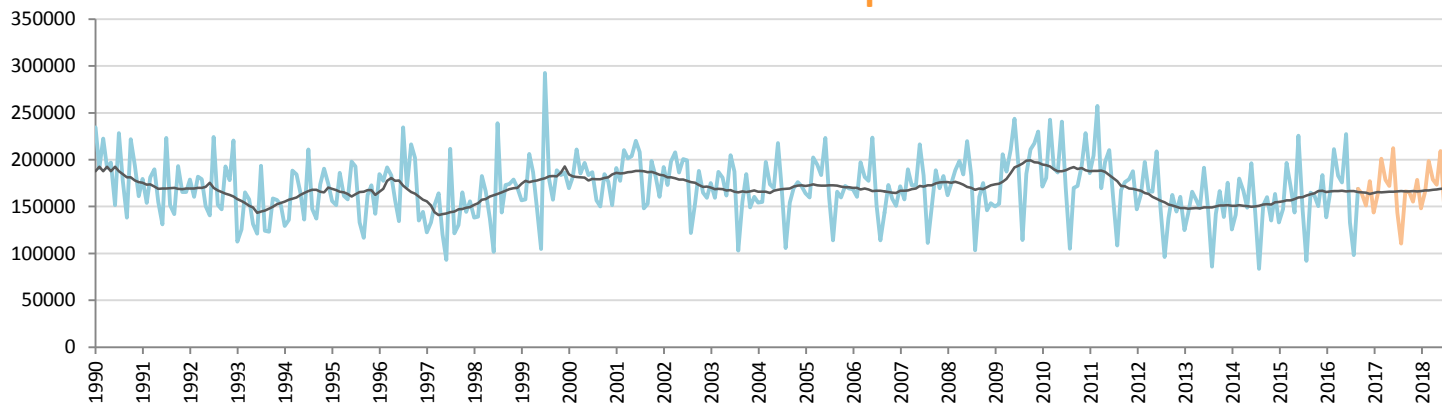
Car Sales Forecast : FRANCE Sept. 2016

Total	Jan.	Feb.	March	April	May	June	July	Aug.	Sept.	Oct.	Nov.	Dec.	YTD	FY
2015	158,076	176,884	233,309	203,851	170,474	266,350	174,682	109,108	200,846	196,825	181,070	223,489	1,693,580	2,294,964
2016	166,362	199,824	249,835	218,900	209,965	272,678	161,248	118,236	204,146	199,568	183,389	215,837	1,801,194	2,399,988
YTY (%)	5.2	13.0	7.1	7.4	23.2	2.4	-7.7	8.4	1.6	1.4	1.3	-3.4	6.4	4.6

Comment: In Sept. the car sales increase by 1,6%. 2016 forecast is an increase of 4,6%.

Trend FY 2017 : 2,390,000 -0.4

Car Sales Forecast : FRANCE Sept. 2016 - Car

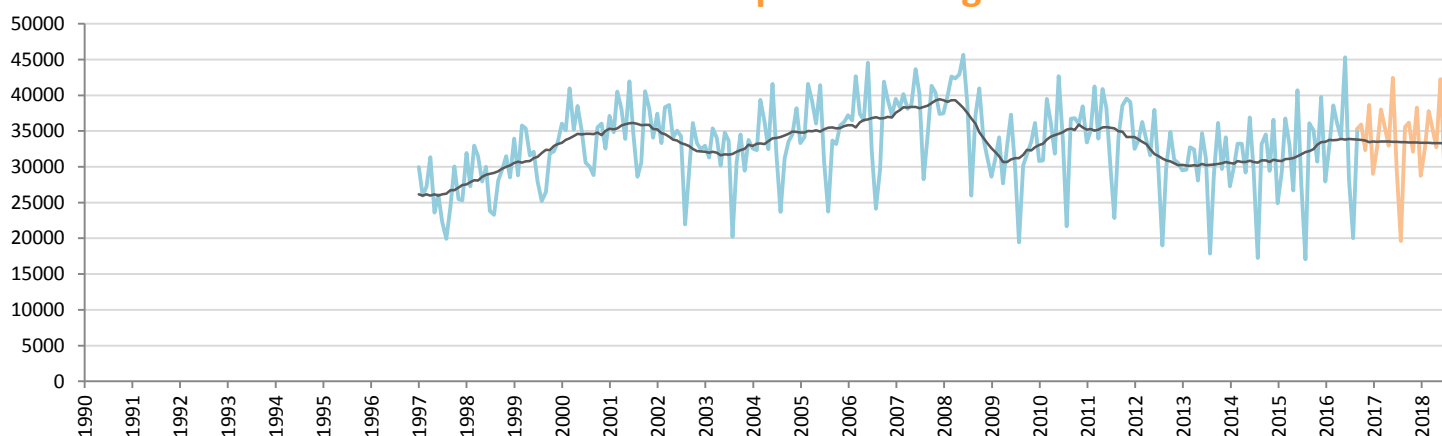


Data processing and forecast by CORAM

CORAM

	Jan.	Feb.	March	April	May	June	July	Aug.	Sept.	Oct.	Nov.	Dec.	YTD	FY
2015	133,170	147,584	196,565	170,765	143,771	225,638	147,125	92,048	164,769	161,737	150,334	183,720	1,421,435	1,917,226
2016	138,400	166,728	211,254	182,863	175,831	227,353	132,990	98,211	168,820	163,641	151,071	177,213	1,502,450	1,994,375
YTY (%)	3.9	13.0	7.5	7.1	22.3	0.8	-9.6	6.7	2.5	1.2	0.5	-3.5	5.7	4.0

Car Sales Forecast : FRANCE Sept. 2016 - Light Com. Veh.

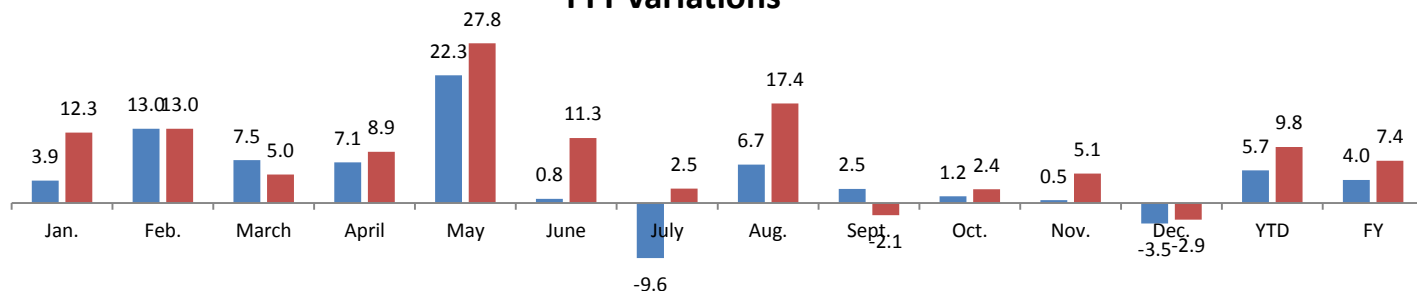


Data processing and forecast by CORAM

CORAM

	Jan.	Feb.	March	April	May	June	July	Aug.	Sept.	Oct.	Nov.	Dec.	YTD	FY
2015	24,906	29,300	36,744	33,086	26,703	40,712	27,557	17,060	36,077	35,088	30,736	39,769	272,145	377,738
2016	27,962	33,096	38,581	36,037	34,134	45,325	28,258	20,025	35,326	35,927	32,318	38,624	298,744	405,612
YTY (%)	12.3	13.0	5.0	8.9	27.8	11.3	2.5	17.4	-2.1	2.4	5.1	-2.9	9.8	7.4

YTY variations



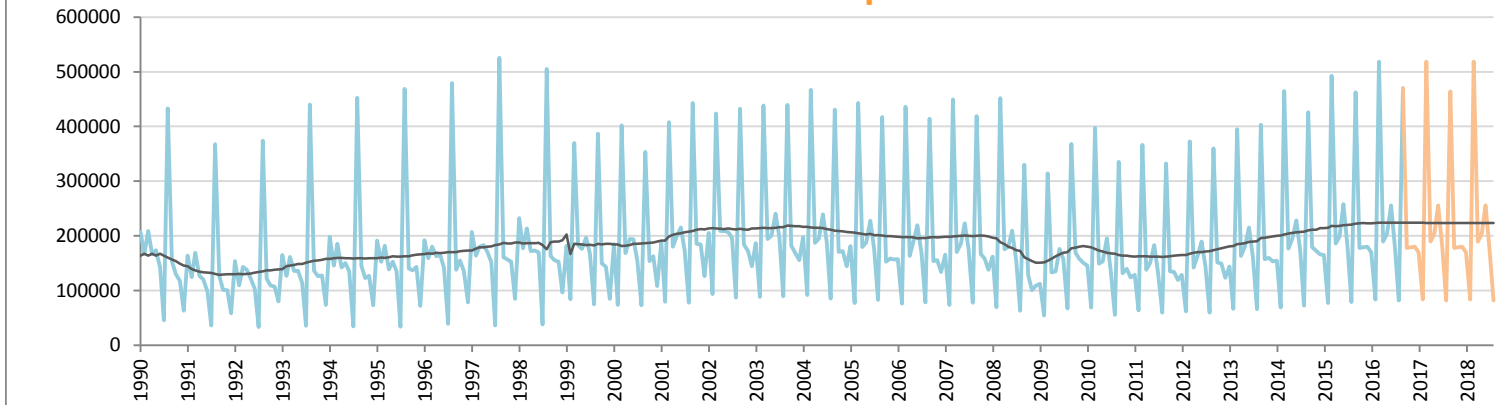
Car Sales Forecast : UK Sept. 2016

Total	Jan.	Feb.	March	April	May	June	July	Aug.	Sept.	Oct.	Nov.	Dec.	YTD	FY
2015	186,905	90,790	554,668	210,705	226,666	293,559	202,966	93,527	521,261	205,872	207,927	210,487	2,381,047	3,005,333
2016	190,780	97,286	582,620	217,385	232,065	292,466	203,029	97,025	529,553	206,622	208,461	210,715	2,442,209	3,068,007
YTY (%)	2.1	7.2	5.0	3.2	2.4	-0.4	0.0	3.7	1.6	0.4	0.3	0.1	2.6	2.1

Comment: In Sept. the car sales increase by 1,6%. 2016 forecast is an increase of 2,1%.

Trend FY 2017 : 3,060,000 -0.3

Car Sales Forecast : UK Sept. 2016 - Car

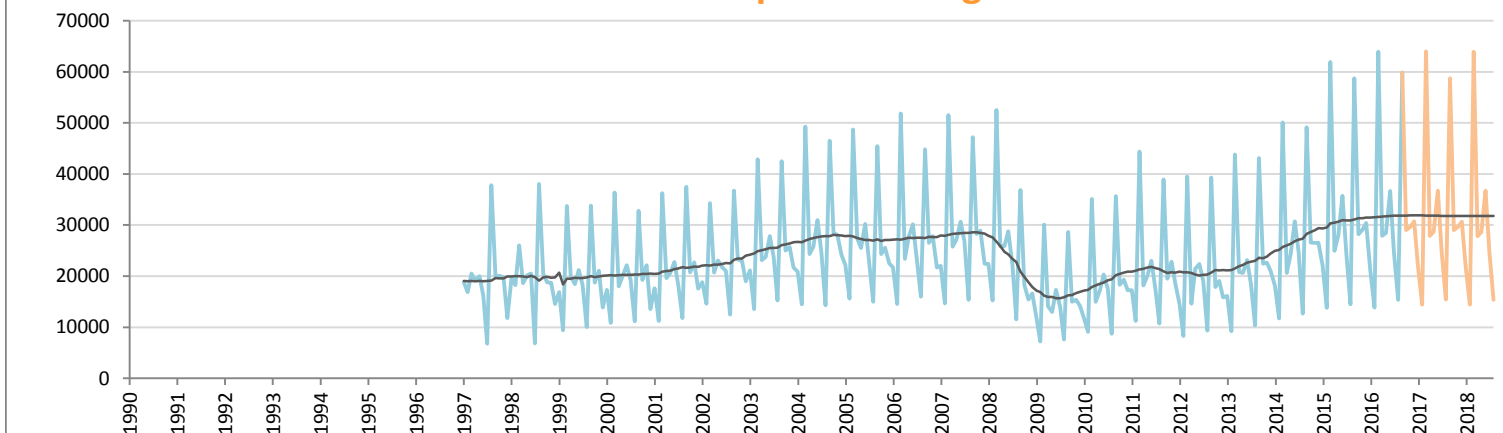


Data processing and forecast by CORAM

CORAM

	Jan.	Feb.	March	April	May	June	July	Aug.	Sept.	Oct.	Nov.	Dec.	YTD	FY
2015	164,856	76,958	492,774	185,778	198,706	257,817	178,420	79,060	462,517	177,664	178,876	180,077	2,096,886	2,633,503
2016	169,678	83,395	518,707	189,505	203,585	255,766	178,523	81,640	469,696	177,566	178,793	180,007	2,150,495	2,686,861
YTY (%)	2.9	8.4	5.3	2.0	2.5	-0.8	0.1	3.3	1.6	-0.1	0.0	0.0	2.6	2.0

Car Sales Forecast : UK Sept. 2016 - Light Com. Veh.

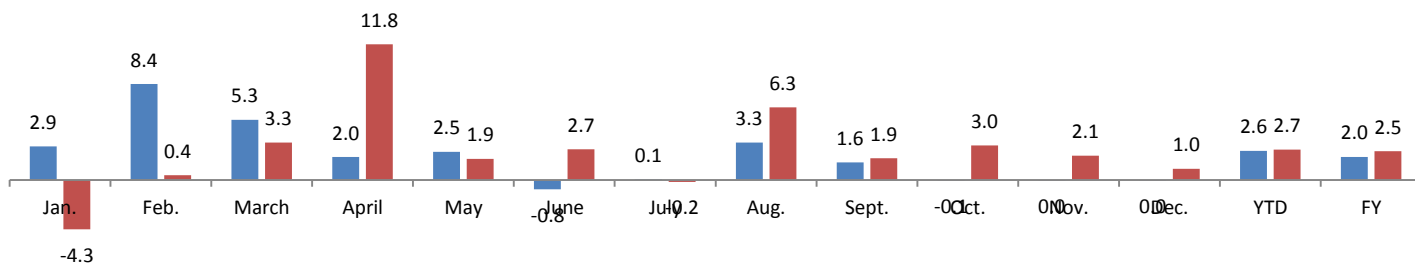


Data processing and forecast by CORAM

CORAM

	Jan.	Feb.	March	April	May	June	July	Aug.	Sept.	Oct.	Nov.	Dec.	YTD	FY
2015	22,049	13,832	61,894	24,927	27,960	35,742	24,546	14,467	58,744	28,208	29,051	30,410	284,161	371,830
2016	21,102	13,891	63,913	27,880	28,480	36,700	24,506	15,385	59,857	29,057	29,667	30,708	291,714	381,146
YTY (%)	-4.3	0.4	3.3	11.8	1.9	2.7	-0.2	6.3	1.9	3.0	2.1	1.0	2.7	2.5

YTY variations



Data source: SMMT. Data processing and forecast by CORAM.

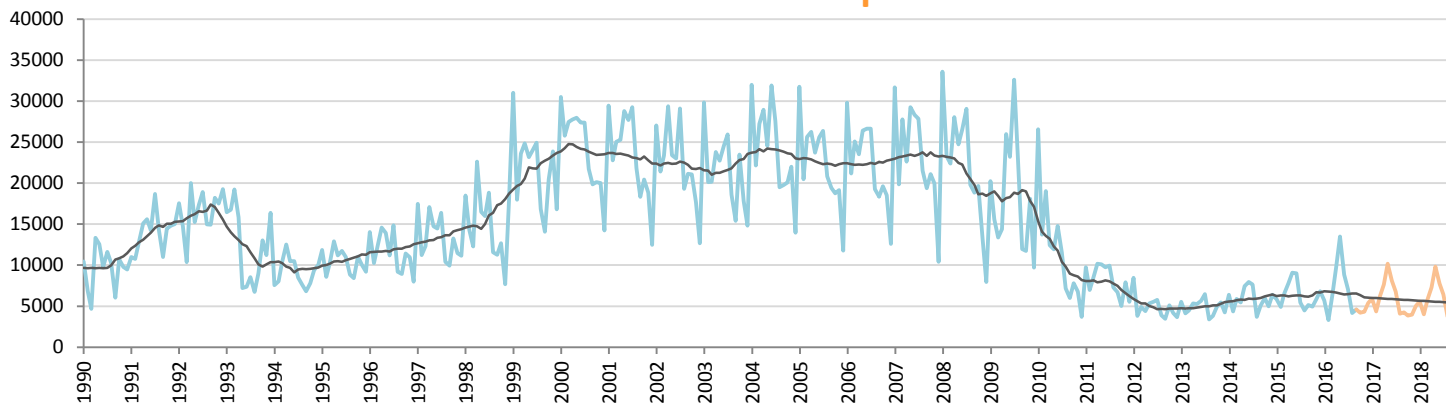
Car Sales Forecast : GREECE Sept. 2016

Total	Jan.	Feb.	March	April	May	June	July	Aug.	Sept.	Oct.	Nov.	Dec.	YTD	FY
2015	6,509	5,626	7,048	8,369	9,488	9,377	5,723	4,749	5,489	5,378	6,313	7,390	62,378	81,459
2016	6,217	3,568	6,655	10,270	14,057	9,519	7,549	4,603	4,989	4,750	4,825	5,978	67,427	82,980
YTY (%)	-4.5	-36.6	-5.6	22.7	48.2	1.5	31.9	-3.1	-9.1	-11.7	-23.6	-19.1	8.1	1.9

Comment: In Sept. the car sales decrease by 9,1%. 2016 forecast is an increase of 1,9%.

Trend FY 2017 : 76,800 -7.4

Car Sales Forecast : GREECE Sept. 2016 - Car

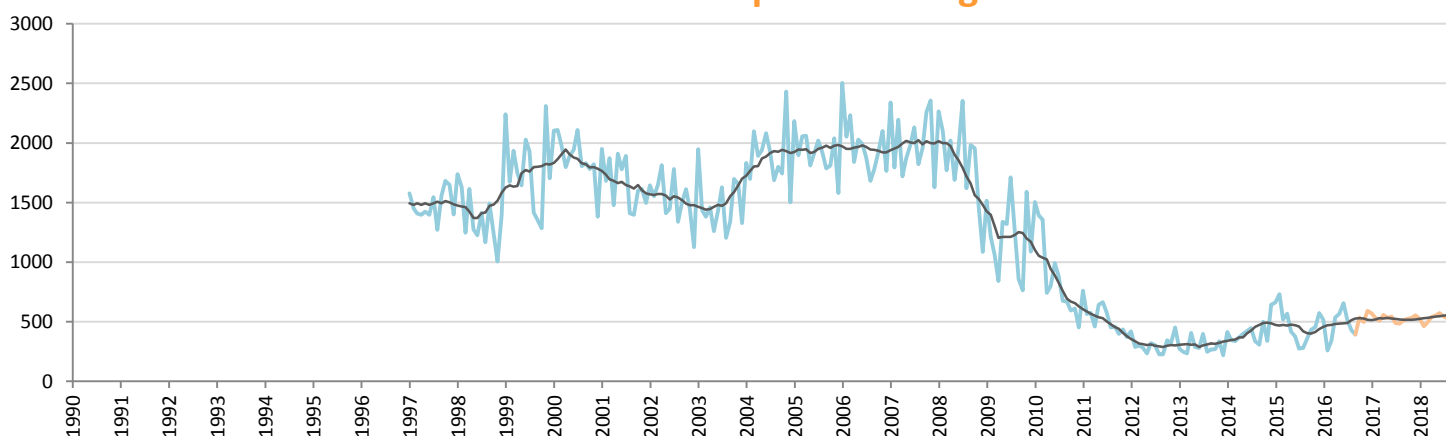


Data processing and forecast by CORAM

CORAM

	Jan.	Feb.	March	April	May	June	July	Aug.	Sept.	Oct.	Nov.	Dec.	YTD	FY
2015	5,848	4,894	6,529	7,801	9,071	8,999	5,448	4,470	5,125	4,946	5,859	6,816	58,185	75,806
2016	5,700	3,310	6,316	9,735	13,489	8,863	7,034	4,174	4,595	4,214	4,326	5,386	63,216	77,143
YTY (%)	-2.5	-32.4	-3.3	24.8	48.7	-1.5	29.1	-6.6	-10.3	-14.8	-26.2	-21.0	8.6	1.8

Car Sales Forecast : GREECE Sept. 2016 - Light Com. Veh.

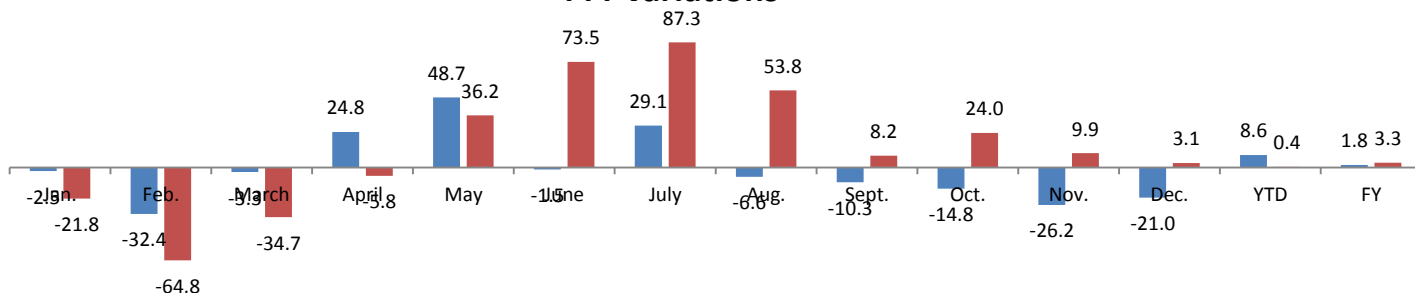


Data processing and forecast by CORAM

CORAM

	Jan.	Feb.	March	April	May	June	July	Aug.	Sept.	Oct.	Nov.	Dec.	YTD	FY
2015	661	732	519	568	417	378	275	279	364	432	454	574	4,193	5,653
2016	517	258	339	535	568	656	515	429	394	536	499	592	4,211	5,837
YTY (%)	-21.8	-64.8	-34.7	-5.8	36.2	73.5	87.3	53.8	8.2	24.0	9.9	3.1	0.4	3.3

YTY variations



Data source: ACEA. Data processing and forecast by CORAM.

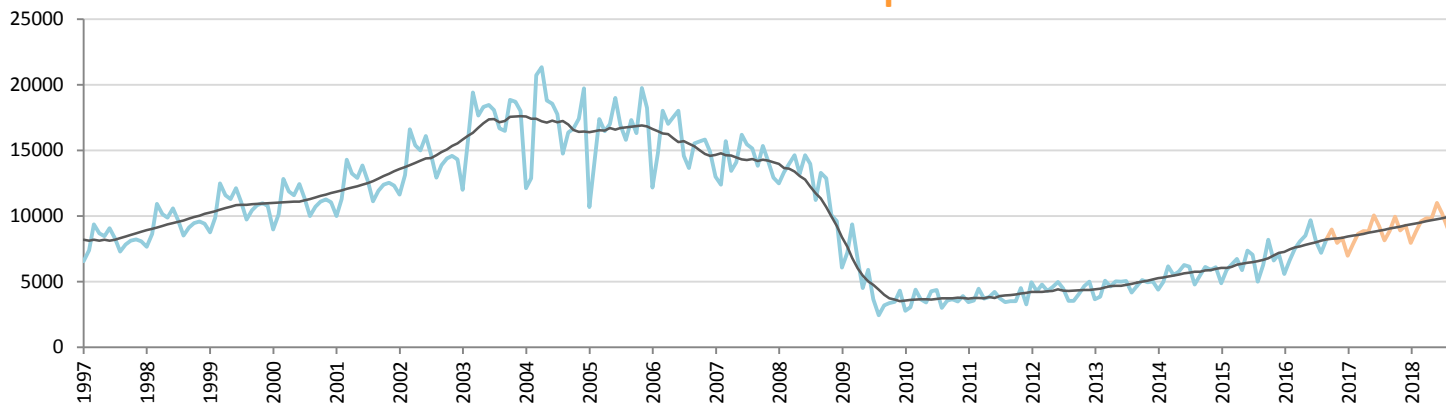
Car Sales Forecast : HUNGARY Sept. 2016

Total	Jan.	Feb.	March	April	May	June	July	Aug.	Sept.	Oct.	Nov.	Dec.	YTD	FY
2015	6,234	7,143	7,854	8,072	7,092	8,805	8,345	5,958	7,582	9,776	8,457	9,385	67,085	94,703
2016	6,875	8,134	9,410	9,863	10,228	11,544	9,655	9,273	9,890	10,388	9,610	9,637	84,872	114,508
YTY (%)	10.3	13.9	19.8	22.2	44.2	31.1	15.7	55.6	30.4	6.3	13.6	2.7	26.5	20.9

Comment: In Sept. the car sales increase by 30,4%. 2016 forecast is an increase of 20,9%.

Trend FY 2017 : 122,000 6.5

Car Sales Forecast : HUNGARY Sept. 2016 - Car

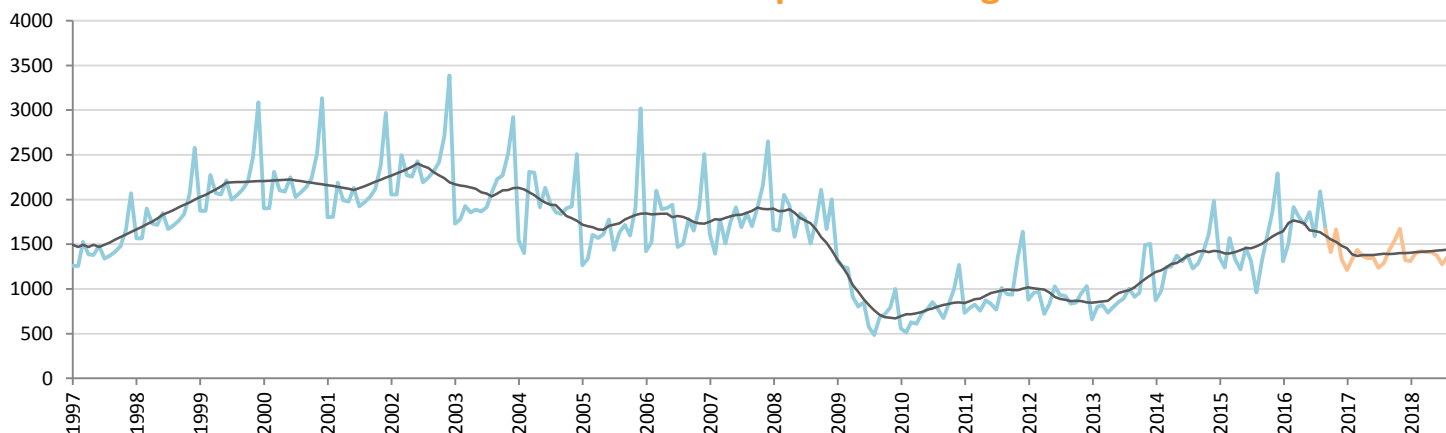


Data processing and forecast by CORAM

CORAM

	Jan.	Feb.	March	April	May	June	July	Aug.	Sept.	Oct.	Nov.	Dec.	YTD	FY
2015	4,880	5,902	6,284	6,736	5,874	7,347	7,032	4,997	6,270	8,192	6,590	7,094	55,322	77,198
2016	5,567	6,625	7,494	8,061	8,506	9,685	8,064	7,181	8,229	8,977	7,945	8,306	69,412	94,640
YTY (%)	14.1	12.3	19.3	19.7	44.8	31.8	14.7	43.7	31.2	9.6	20.6	17.1	25.5	22.6

Car Sales Forecast : HUNGARY Sept. 2016 - Light Com. Veh.

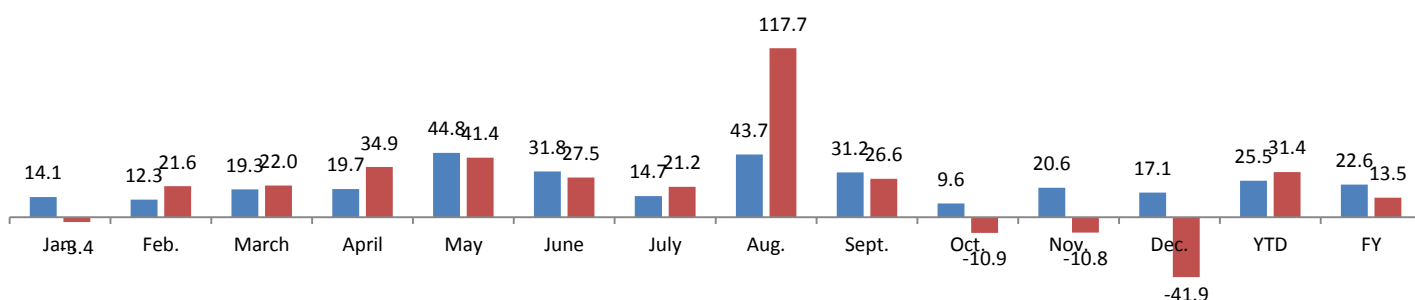


Data processing and forecast by CORAM

CORAM

	Jan.	Feb.	March	April	May	June	July	Aug.	Sept.	Oct.	Nov.	Dec.	YTD	FY
2015	1,354	1,241	1,570	1,336	1,218	1,458	1,313	961	1,312	1,584	1,867	2,291	11,763	17,505
2016	1,308	1,509	1,916	1,802	1,722	1,859	1,591	2,092	1,661	1,411	1,665	1,332	15,460	19,868
YTY (%)	-3.4	21.6	22.0	34.9	41.4	27.5	21.2	117.7	26.6	-10.9	-10.8	-41.9	31.4	13.5

YTY variations



Data source: ACEA. Data processing and forecast by CORAM.

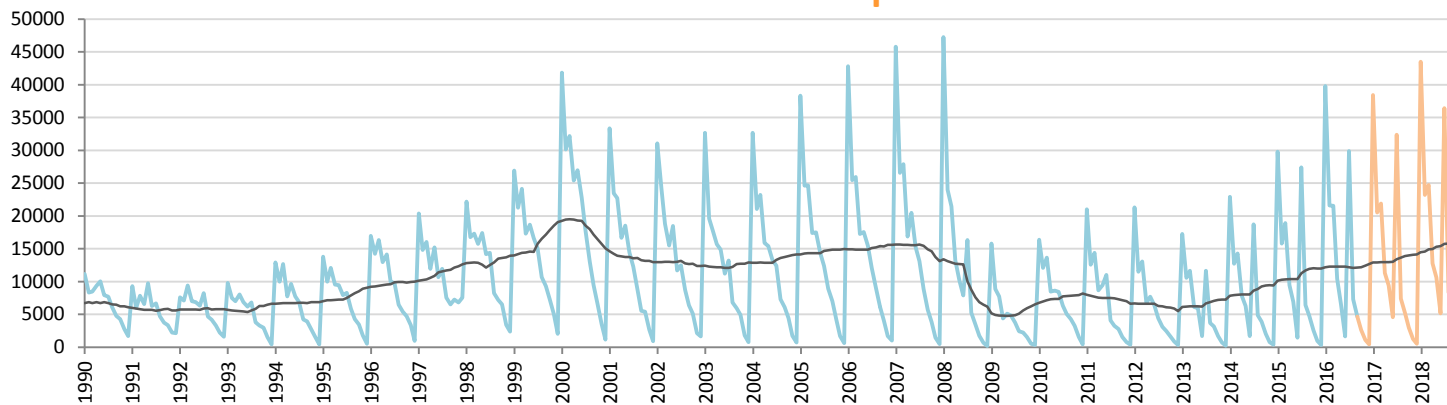
Car Sales Forecast : IRELAND Sept. 2016

Total	Jan.	Feb.	March	April	May	June	July	Aug.	Sept.	Oct.	Nov.	Dec.	YTD	FY
2015	34,717	18,089	21,771	11,529	8,624	2,247	31,158	8,046	6,355	3,769	1,574	578	142,536	148,457
2016	45,508	25,046	24,964	12,713	8,337	2,488	34,224	9,111	6,317	4,029	1,791	659	168,708	175,187
YTY (%)	31.1	38.5	14.7	10.3	-3.3	10.7	9.8	13.2	-0.6	6.9	13.8	14.0	18.4	18.0

Comment: In Sept. the car sales decrease by 0,6%. 2016 forecast is an increase of 18%.

Trend FY 2017 : 183,000 4.5

Car Sales Forecast : IRELAND Sept. 2016 - Car

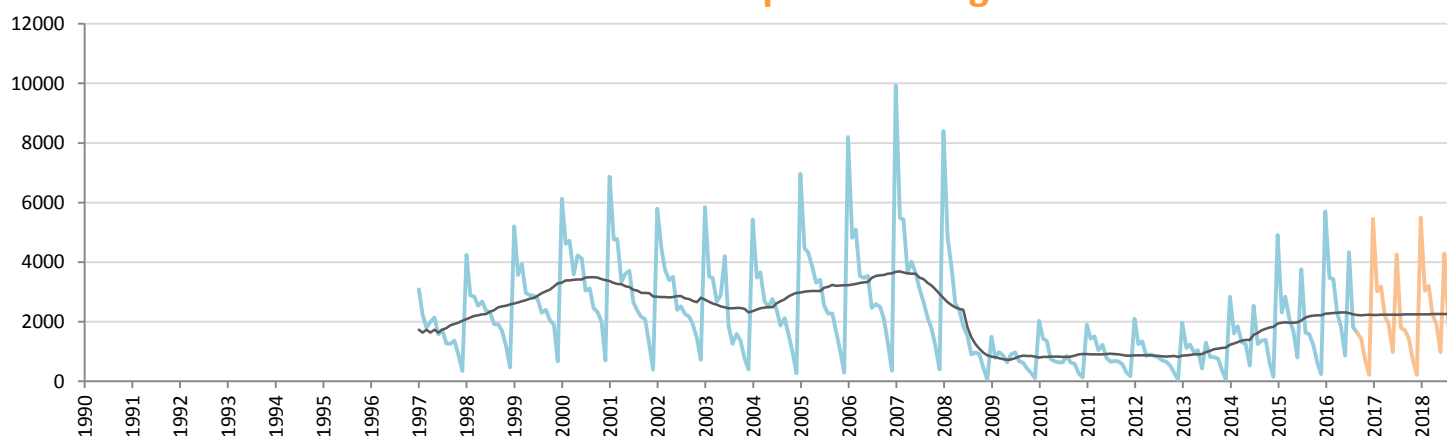


Data processing and forecast by CORAM

CORAM

	Jan.	Feb.	March	April	May	June	July	Aug.	Sept.	Oct.	Nov.	Dec.	YTD	FY
2015	29,808	15,778	18,933	9,451	6,919	1,448	27,394	6,408	4,775	2,562	948	342	120,914	124,766
2016	39,812	21,576	21,532	10,408	6,504	1,625	29,893	7,302	4,689	2,610	1,106	443	143,341	147,500
YTY (%)	33.6	36.7	13.7	10.1	-6.0	12.2	9.1	14.0	-1.8	1.9	16.6	29.6	18.5	18.2

Car Sales Forecast : IRELAND Sept. 2016 - Light Com. Veh.

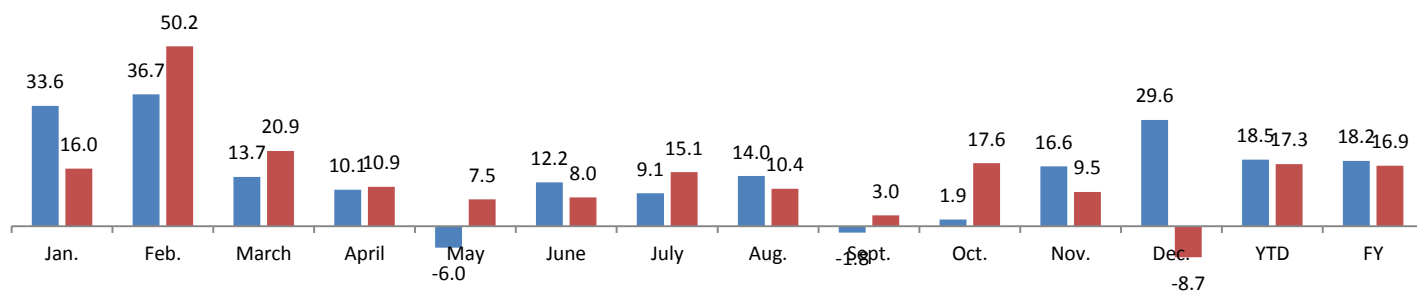


Data processing and forecast by CORAM

CORAM

	Jan.	Feb.	March	April	May	June	July	Aug.	Sept.	Oct.	Nov.	Dec.	YTD	FY
2015	4,909	2,311	2,838	2,078	1,705	799	3,764	1,638	1,580	1,207	626	236	21,622	23,691
2016	5,696	3,470	3,432	2,305	1,833	863	4,331	1,809	1,628	1,419	685	216	25,367	27,687
YTY (%)	16.0	50.2	20.9	10.9	7.5	8.0	15.1	10.4	3.0	17.6	9.5	-8.7	17.3	16.9

YTY variations



Data source: ACEA. Data processing and forecast by CORAM.

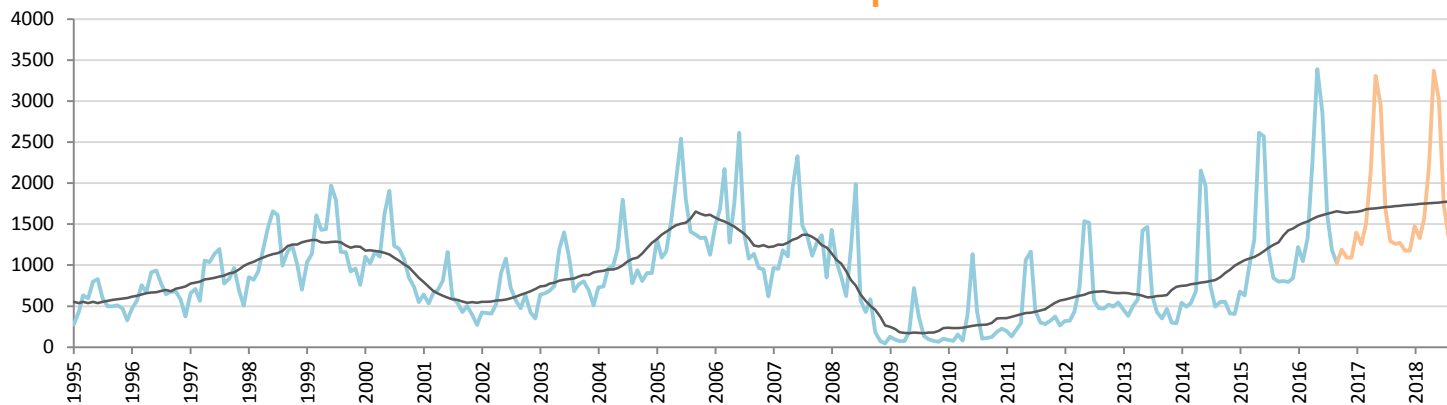
Car Sales Forecast : ICELAND Sept. 2016

Total	Jan.	Feb.	March	April	May	June	July	Aug.	Sept.	Oct.	Nov.	Dec.	YTD	FY
2015	763	717	1,085	1,444	2,760	2,710	1,358	923	902	899	866	946	12,662	15,373
2016	1,349	1,186	1,498	2,483	3,621	2,994	1,738	1,296	1,145	1,311	1,200	1,217	17,310	21,038
YTY (%)	76.8	65.4	38.1	72.0	31.2	10.5	28.0	40.4	26.9	45.8	38.6	28.7	36.7	36.9

Comment: In Sept. the car sales increase by 26,9%. 2016 forecast is an increase of 36,9%.

Trend FY 2017 : 22,000 4.6

Car Sales Forecast : ICELAND Sept. 2016 - Car

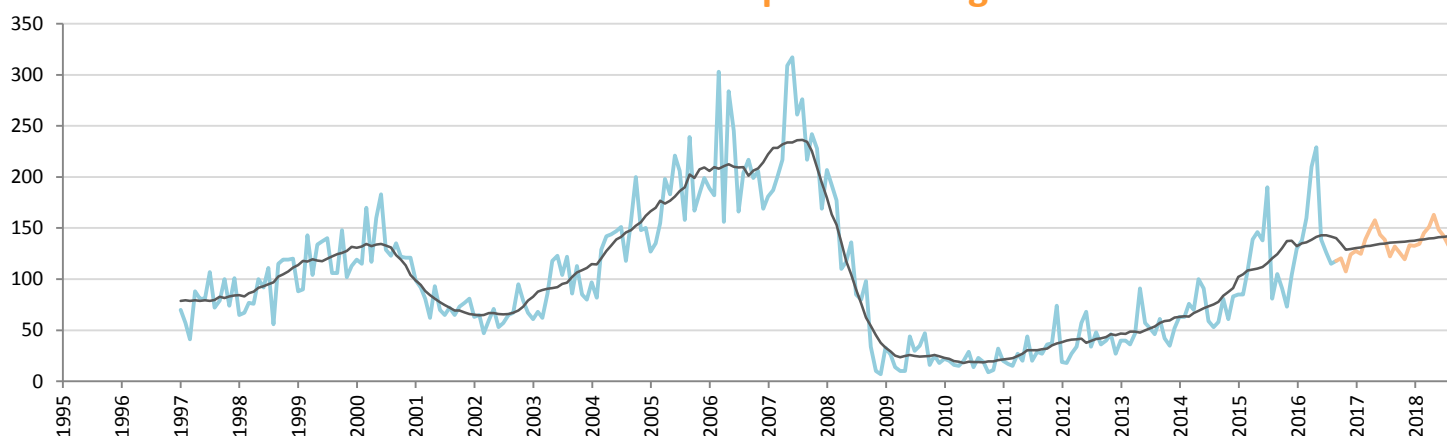


Data processing and forecast by CORAM

CORAM

	Jan.	Feb.	March	April	May	June	July	Aug.	Sept.	Oct.	Nov.	Dec.	YTD	FY
2015	678	632	977	1,305	2,614	2,572	1,168	842	797	808	793	842	11,585	14,028
2016	1,219	1,048	1,338	2,273	3,392	2,855	1,612	1,181	1,027	1,190	1,093	1,093	15,945	19,321
YTY (%)	79.8	65.8	36.9	74.2	29.8	11.0	38.0	40.3	28.9	47.3	37.8	29.8	37.6	37.7

Car Sales Forecast : ICELAND Sept. 2016 - Light Com. Veh.

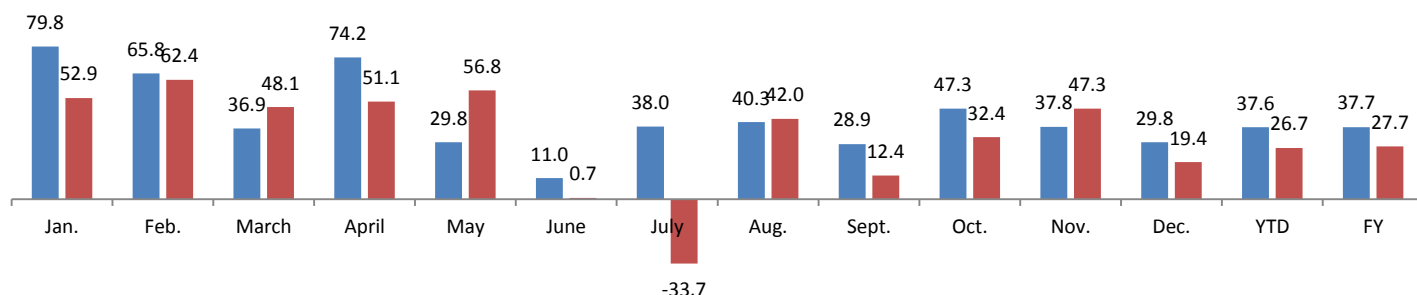


Data processing and forecast by CORAM

CORAM

	Jan.	Feb.	March	April	May	June	July	Aug.	Sept.	Oct.	Nov.	Dec.	YTD	FY
2015	85	85	108	139	146	138	190	81	105	91	73	104	1,077	1,345
2016	130	138	160	210	229	139	126	115	118	121	108	124	1,365	1,717
YTY (%)	52.9	62.4	48.1	51.1	56.8	0.7	-33.7	42.0	12.4	32.4	47.3	19.4	26.7	27.7

YTY variations



Data source: ACEA. Data processing and forecast by CORAM.

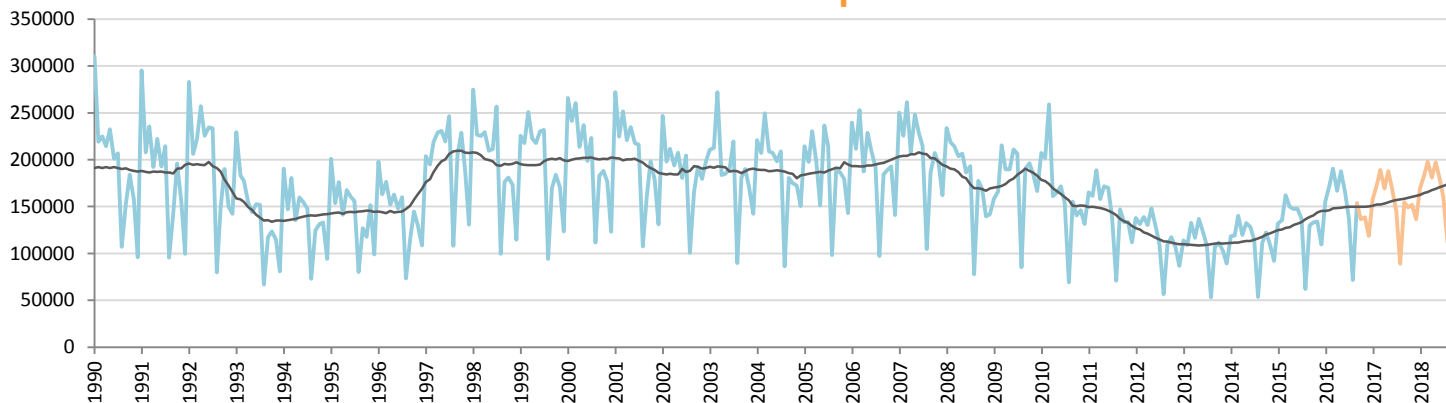
Car Sales Forecast : ITALY Sept. 2016

Total	Jan.	Feb.	March	April	May	June	July	Aug.	Sept.	Oct.	Nov.	Dec.	YTD	FY
2015	141,275	144,967	173,542	160,591	158,372	158,950	148,697	67,403	141,271	145,029	147,021	123,595	1,295,068	1,710,713
2016	166,957	184,841	205,381	181,216	202,431	179,608	154,953	83,776	170,077	151,723	154,115	134,864	1,529,240	1,969,942
YTY (%)	18.2	27.5	18.3	12.8	27.8	13.0	4.2	24.3	20.4	4.6	4.8	9.1	18.1	15.2

Comment: In Sept. the car sales increase by 20,4%. 2016 forecast is an increase of 15,2%.

Trend FY 2017 : 2,060,000 4.6

Car Sales Forecast : ITALY Sept. 2016 - Car

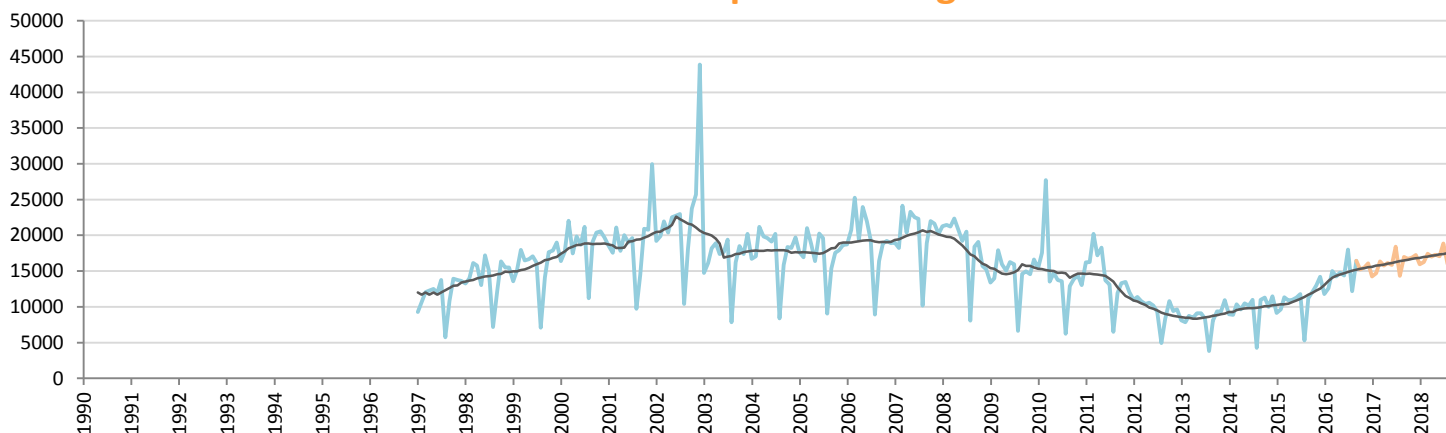


Data processing and forecast by CORAM

CORAM

	Jan.	Feb.	March	April	May	June	July	Aug.	Sept.	Oct.	Nov.	Dec.	YTD	FY
2015	132,111	135,317	162,187	149,700	147,405	147,661	136,897	62,103	130,071	132,929	134,021	109,395	1,203,452	1,579,797
2016	155,157	172,241	190,381	166,966	187,631	165,208	136,953	71,576	153,617	136,485	138,638	118,793	1,399,730	1,793,646
YTY (%)	17.4	27.3	17.4	11.5	27.3	11.9	0.0	15.3	18.1	2.7	3.4	8.6	16.3	13.5

Car Sales Forecast : ITALY Sept. 2016 - Light Com. Veh.

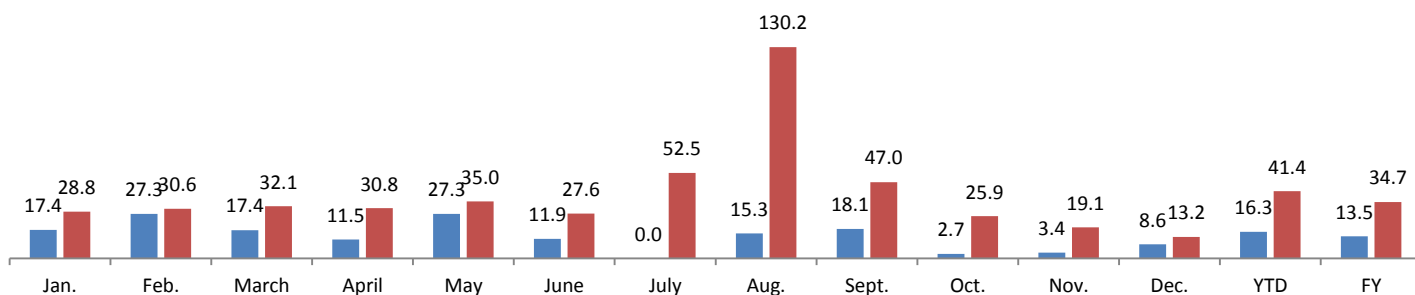


Data processing and forecast by CORAM

CORAM

	Jan.	Feb.	March	April	May	June	July	Aug.	Sept.	Oct.	Nov.	Dec.	YTD	FY
2015	9,164	9,650	11,355	10,891	10,967	11,289	11,800	5,300	11,200	12,100	13,000	14,200	91,616	130,916
2016	11,800	12,600	15,000	14,250	14,800	14,400	18,000	12,200	16,460	15,238	15,477	16,071	129,510	176,296
YTY (%)	28.8	30.6	32.1	30.8	35.0	27.6	52.5	130.2	47.0	25.9	19.1	13.2	41.4	34.7

YTY variations



Data source: ANFIA. Data processing and forecast by CORAM.

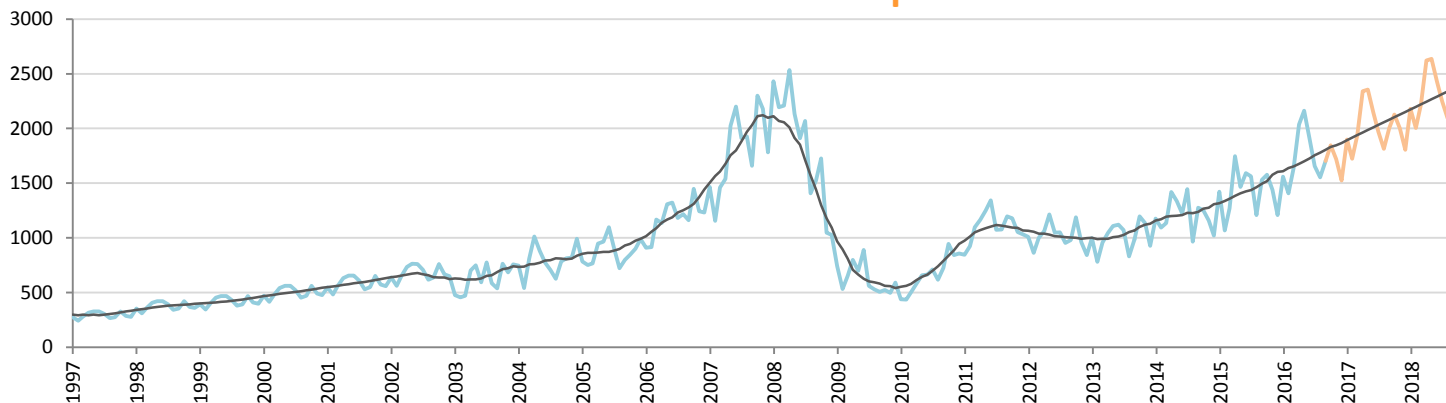
Car Sales Forecast : LITHUANIA Sept. 2016

Total	Jan.	Feb.	March	April	May	June	July	Aug.	Sept.	Oct.	Nov.	Dec.	YTD	FY
2015	1,669	1,186	1,481	1,902	1,642	1,805	1,806	1,346	1,722	1,808	1,659	1,426	14,559	19,452
2016	1,784	1,619	1,877	2,323	2,401	2,187	1,913	1,767	1,944	2,106	1,970	1,783	17,815	23,675
YTY (%)	6.9	36.5	26.7	22.1	46.2	21.2	5.9	31.3	12.9	16.5	18.8	25.1	22.4	21.7

Comment: In Sept. the car sales increase by 12,9%. 2016 forecast is an increase of 21,7%.

Trend FY 2017 : 27,200 14.9

Car Sales Forecast : LITHUANIA Sept. 2016 - Car

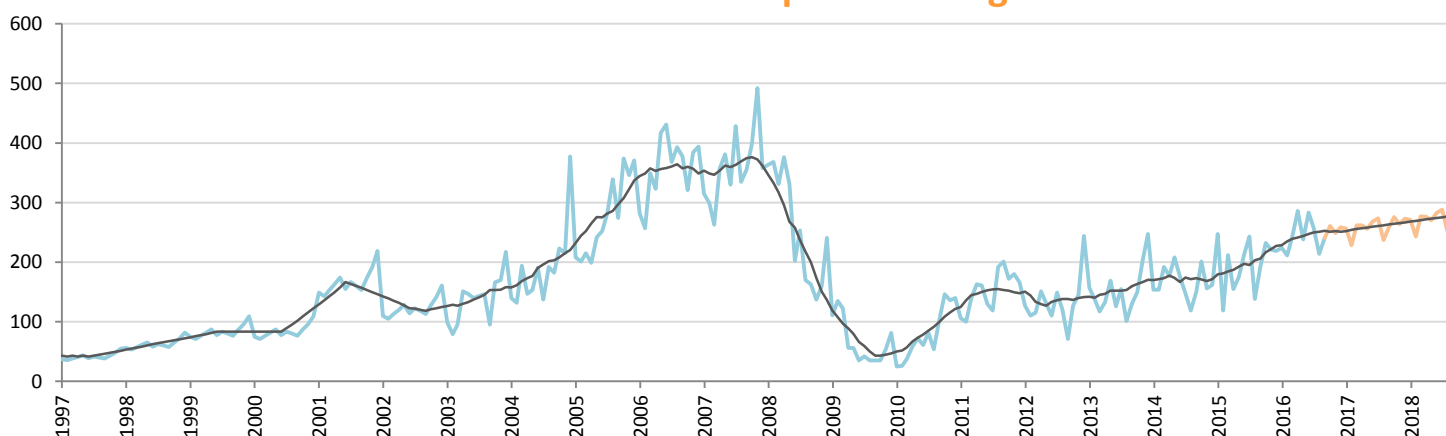


Data processing and forecast by CORAM

CORAM

	Jan.	Feb.	March	April	May	June	July	Aug.	Sept.	Oct.	Nov.	Dec.	YTD	FY
2015	1,422	1,067	1,269	1,747	1,467	1,591	1,563	1,208	1,530	1,576	1,438	1,207	12,864	17,085
2016	1,560	1,408	1,634	2,037	2,163	1,904	1,656	1,553	1,704	1,845	1,721	1,525	15,619	20,710
YTY (%)	9.7	32.0	28.8	16.6	47.4	19.7	6.0	28.6	11.4	17.1	19.7	26.3	21.4	21.2

Car Sales Forecast : LITHUANIA Sept. 2016 - Light Com. Veh.

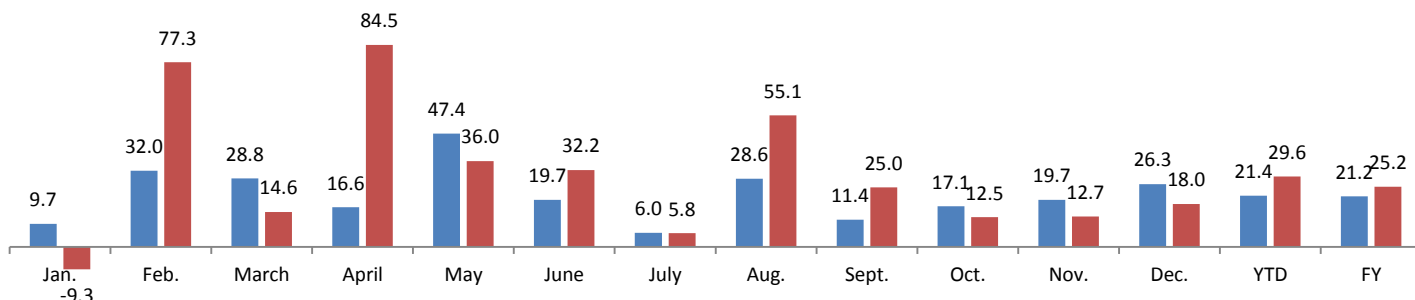


Data processing and forecast by CORAM

CORAM

	Jan.	Feb.	March	April	May	June	July	Aug.	Sept.	Oct.	Nov.	Dec.	YTD	FY
2015	247	119	212	155	175	214	243	138	192	232	221	219	1,695	2,367
2016	224	211	243	286	238	283	257	214	240	261	249	259	2,196	2,964
YTY (%)	-9.3	77.3	14.6	84.5	36.0	32.2	5.8	55.1	25.0	12.5	12.7	18.0	29.6	25.2

YTY variations



Data source: ACEA. Data processing and forecast by CORAM.

Car Sales Forecast : LUXEMBOURG Sept. 2016

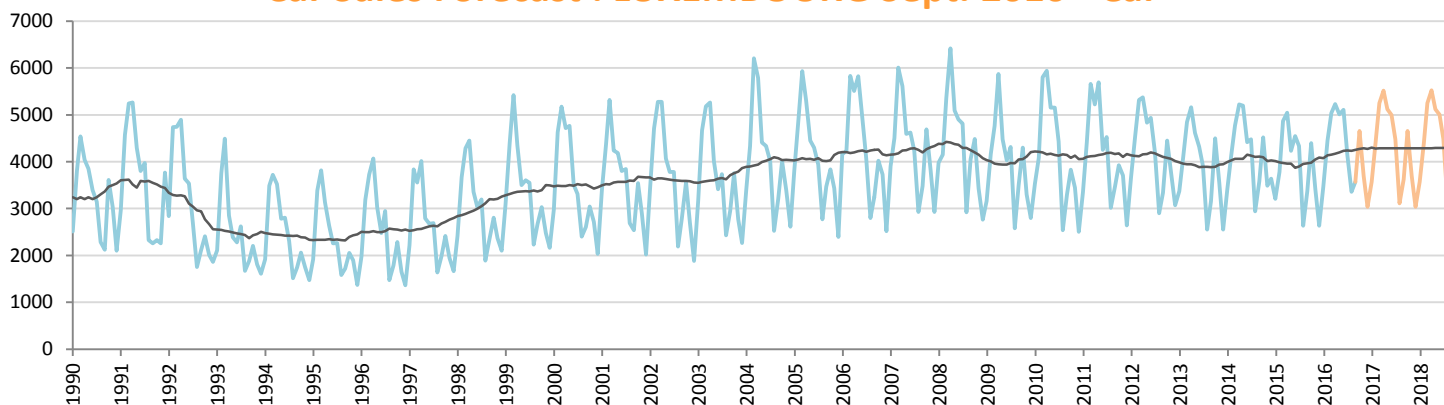
Total	Jan.	Feb.	March	April	May	June	July	Aug.	Sept.	Oct.	Nov.	Dec.	YTD	FY
2015	3,537	4,045	5,183	5,357	4,507	4,916	4,698	2,896	3,657	4,758	3,798	2,928	38,796	50,280
2016	3,787	4,783	5,515	5,601	5,375	5,571	4,500	3,676	3,844	5,053	4,076	3,347	42,652	55,128
YTY (%)	7.1	18.2	6.4	4.6	19.3	13.3	-4.2	26.9	5.1	6.2	7.3	14.3	9.9	9.6

Comment: In Sept. the car sales increase by 5,1%. 2016 forecast is an increase of 9,6%.

Trend FY 2017 :

56,000 1.6

Car Sales Forecast : LUXEMBOURG Sept. 2016 - Car

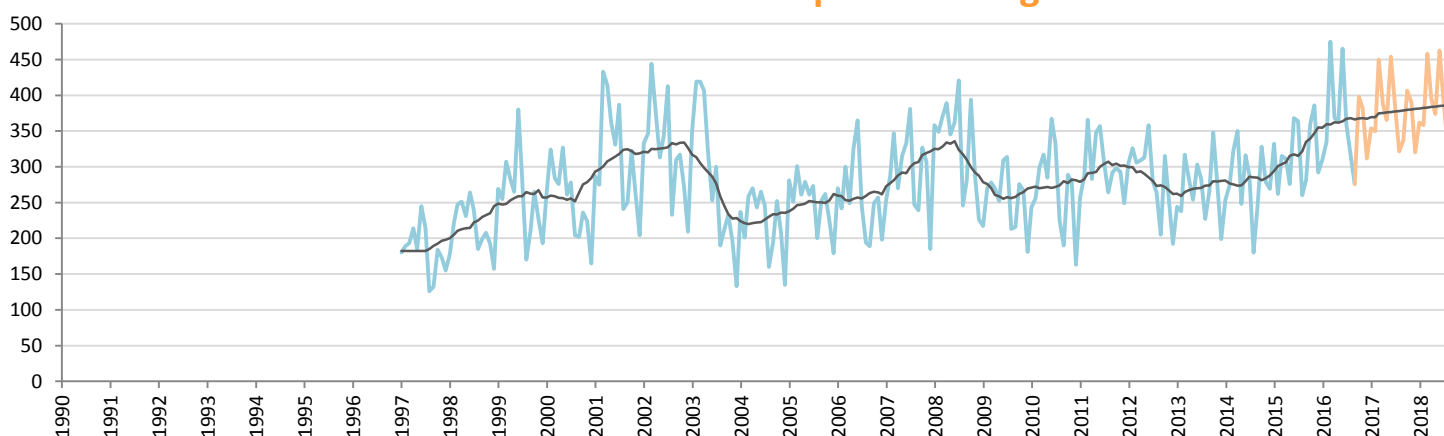


Data processing and forecast by CORAM

CORAM

	Jan.	Feb.	March	April	May	June	July	Aug.	Sept.	Oct.	Nov.	Dec.	YTD	FY
2015	3,205	3,783	4,868	5,046	4,231	4,548	4,334	2,636	3,376	4,398	3,412	2,636	36,027	46,473
2016	3,477	4,448	5,040	5,233	5,011	5,106	4,141	3,359	3,568	4,655	3,695	3,036	39,383	50,768
YTY (%)	8.5	17.6	3.5	3.7	18.4	12.3	-4.5	27.4	5.7	5.8	8.3	15.2	9.3	9.2

Car Sales Forecast : LUXEMBOURG Sept. 2016 - Light Com. Veh.

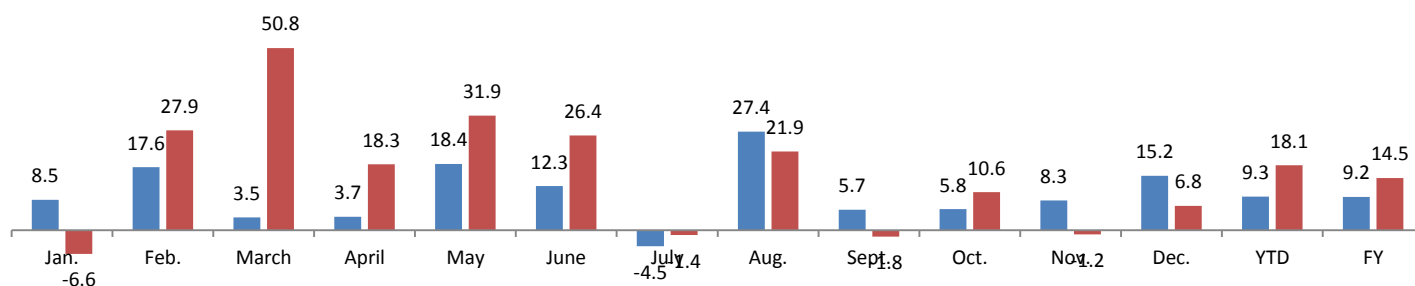


Data processing and forecast by CORAM

CORAM

	Jan.	Feb.	March	April	May	June	July	Aug.	Sept.	Oct.	Nov.	Dec.	YTD	FY
2015	332	262	315	311	276	368	364	260	281	360	386	292	2,769	3,807
2016	310	335	475	368	364	465	359	317	276	398	381	312	3,269	4,360
YTY (%)	-6.6	27.9	50.8	18.3	31.9	26.4	-1.4	21.9	-1.8	10.6	-1.2	6.8	18.1	14.5

YTY variations



Data source: ACEA. Data processing and forecast by CORAM.

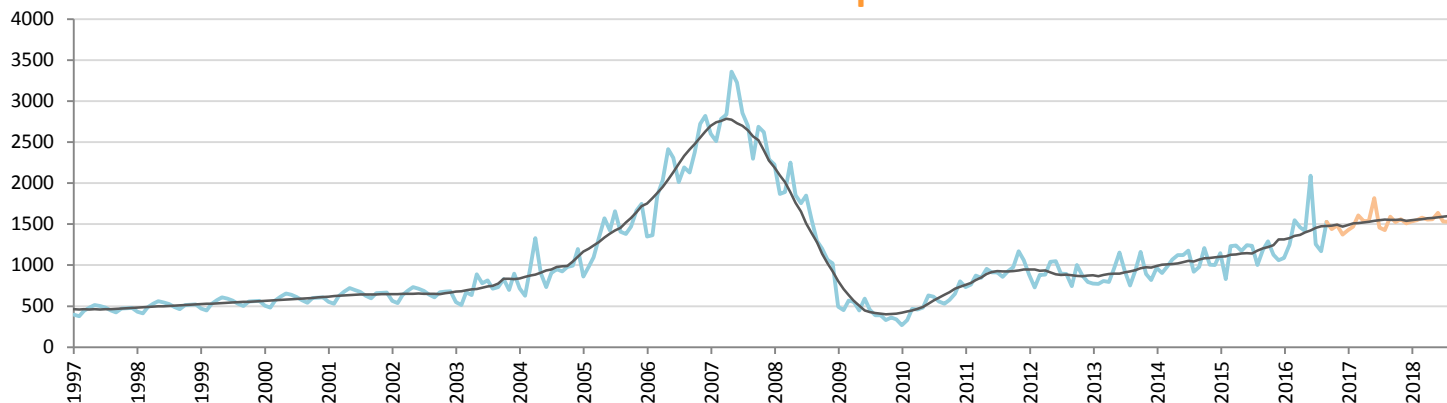
Car Sales Forecast : LATVIA Sept. 2016

Total	Jan.	Feb.	March	April	May	June	July	Aug.	Sept.	Oct.	Nov.	Dec.	YTD	FY
2015	1,336	978	1,432	1,452	1,404	1,465	1,400	1,173	1,355	1,503	1,362	1,253	11,995	16,113
2016	1,261	1,420	1,712	1,646	1,588	2,244	1,449	1,373	1,716	1,631	1,675	1,562	14,409	19,277
YTY (%)	-5.6	45.2	19.6	13.4	13.1	53.2	3.5	17.1	26.6	8.5	23.0	24.7	20.1	19.6

Comment: In Sept. the car sales increase by 26,6%. 2016 forecast is an increase of 19,6%.

Trend FY 2017 : 20,800 7.9

Car Sales Forecast : LATVIA Sept. 2016 - Car

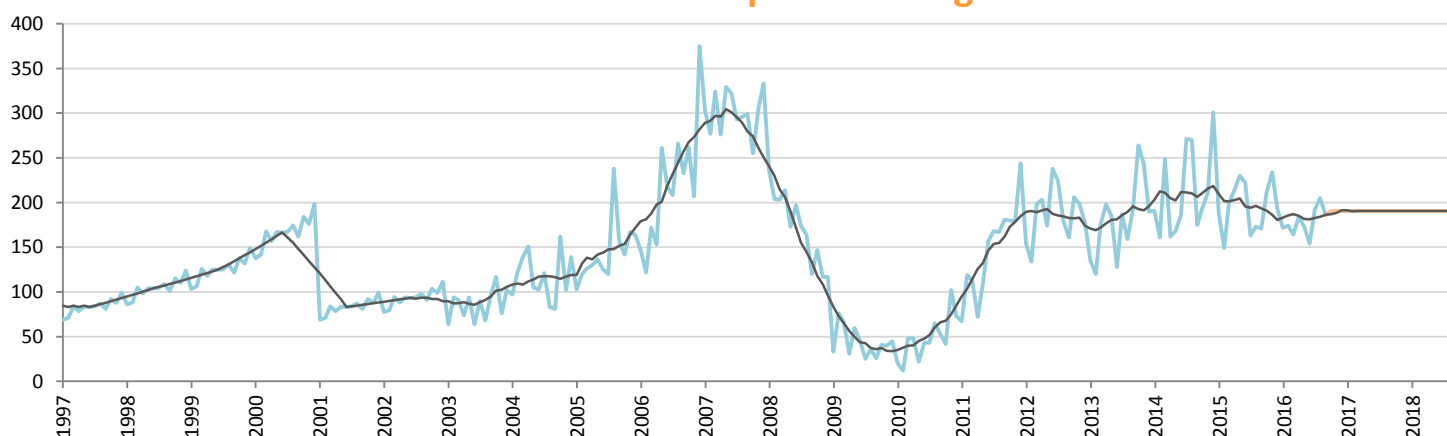


Data processing and forecast by CORAM

CORAM

	Jan.	Feb.	March	April	May	June	July	Aug.	Sept.	Oct.	Nov.	Dec.	YTD	FY
2015	1,148	829	1,233	1,238	1,174	1,243	1,237	1,000	1,184	1,291	1,128	1,060	10,286	13,765
2016	1,089	1,246	1,548	1,462	1,415	2,090	1,257	1,168	1,530	1,440	1,484	1,372	12,805	17,101
YTY (%)	-5.1	50.3	25.5	18.1	20.5	68.1	1.6	16.8	29.2	11.6	31.6	29.4	24.5	24.2

Car Sales Forecast : LATVIA Sept. 2016 - Light Com. Veh.

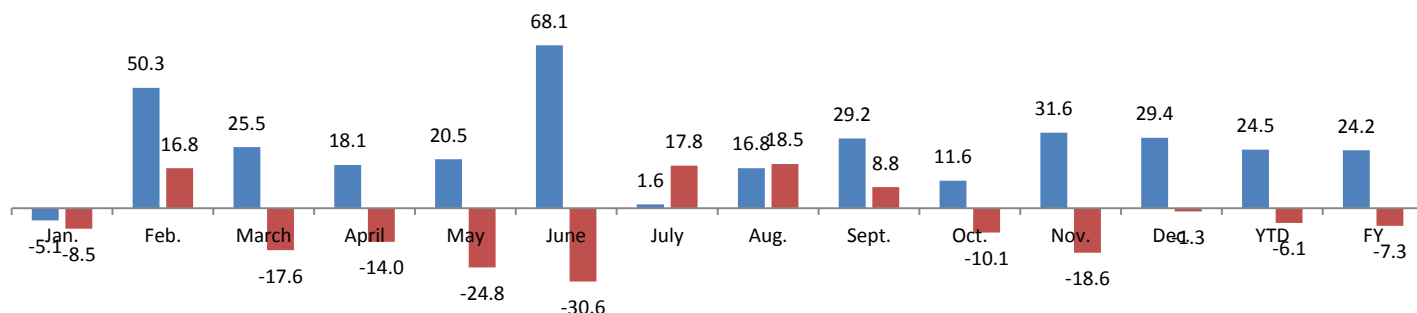


Data processing and forecast by CORAM

CORAM

	Jan.	Feb.	March	April	May	June	July	Aug.	Sept.	Oct.	Nov.	Dec.	YTD	FY
2015	188	149	199	214	230	222	163	173	171	212	234	193	1,709	2,348
2016	172	174	164	184	173	154	192	205	186	191	191	191	1,604	2,176
YTY (%)	-8.5	16.8	-17.6	-14.0	-24.8	-30.6	17.8	18.5	8.8	-10.1	-18.6	-1.3	-6.1	-7.3

YTY variations



Data source: ACEA. Data processing and forecast by CORAM.

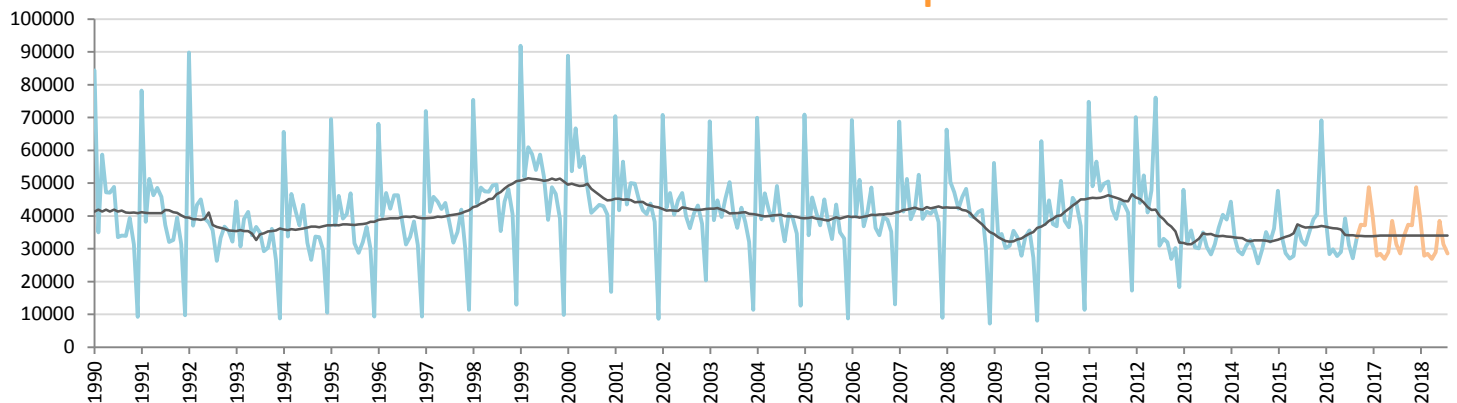
Car Sales Forecast : NETHERLANDS Sept. 2016

Total	Jan.	Feb.	March	April	May	June	July	Aug.	Sept.	Oct.	Nov.	Dec.	YTD	FY
2015	54,045	38,007	34,537	31,614	32,562	42,740	36,816	34,915	40,076	43,516	45,293	72,569	345,312	506,690
2016	48,183	34,713	37,514	33,754	34,747	46,722	36,126	31,731	38,841	43,152	43,090	52,340	342,331	480,913
YTY (%)	-10.8	-8.7	8.6	6.8	6.7	9.3	-1.9	-9.1	-3.1	-0.8	-4.9	-27.9	-0.9	-5.1

Comment: In Sept. the car sales decrease by 3,1%. 2016 forecast is a decrease of 5,1%.

Trend FY 2017 : 483,000 0.4

Car Sales Forecast : NETHERLANDS Sept. 2016 - Car

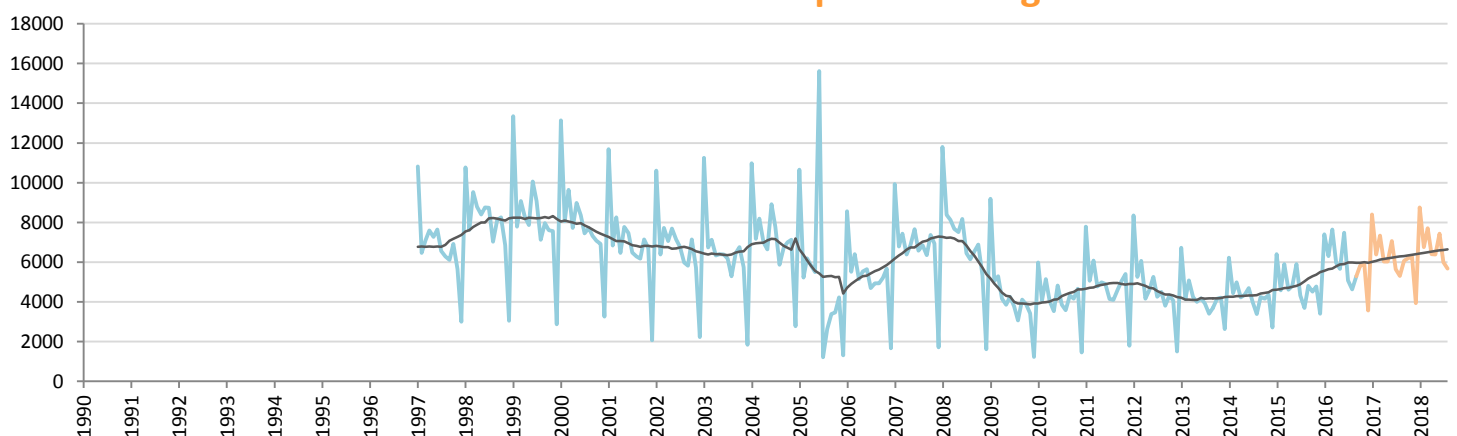


Data processing and forecast by CORAM

CORAM

	Jan.	Feb.	March	April	May	June	July	Aug.	Sept.	Oct.	Nov.	Dec.	YTD	FY
2015	47,639	33,421	28,642	26,996	27,757	36,839	32,494	31,225	35,277	39,006	40,516	69,159	300,290	448,971
2016	40,776	28,408	29,869	27,783	29,083	39,241	31,050	27,110	33,545	37,334	37,188	48,767	286,865	410,154
YTY (%)	-14.4	-15.0	4.3	2.9	4.8	6.5	-4.4	-13.2	-4.9	-4.3	-8.2	-29.5	-4.5	-8.6

Car Sales Forecast : NETHERLANDS Sept. 2016 - Light Com. Veh.

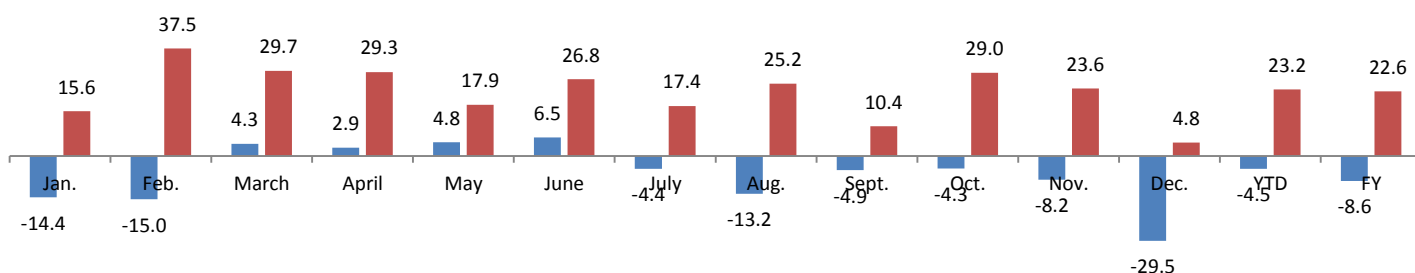


Data processing and forecast by CORAM

CORAM

	Jan.	Feb.	March	April	May	June	July	Aug.	Sept.	Oct.	Nov.	Dec.	YTD	FY
2015	6,406	4,586	5,895	4,618	4,805	5,901	4,322	3,690	4,799	4,510	4,777	3,410	45,022	57,719
2016	7,407	6,305	7,645	5,971	5,664	7,481	5,076	4,621	5,296	5,818	5,902	3,573	55,466	70,759
YTY (%)	15.6	37.5	29.7	29.3	17.9	26.8	17.4	25.2	10.4	29.0	23.6	4.8	23.2	22.6

YTY variations



Data source: ACEA. Data processing and forecast by CORAM.

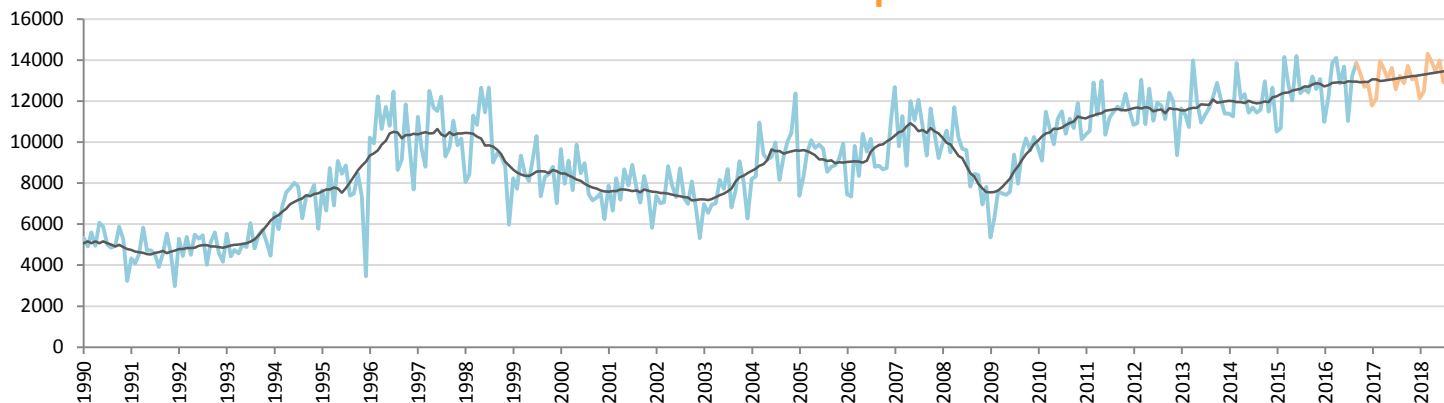
Car Sales Forecast : NORWAY Sept. 2016

Total	Jan.	Feb.	March	April	May	June	July	Aug.	Sept.	Oct.	Nov.	Dec.	YTD	FY
2015	12,791	13,153	17,029	15,669	14,720	16,806	14,479	15,158	14,871	16,089	15,632	17,543	134,676	183,940
2016	12,880	14,708	16,653	17,237	15,459	16,592	13,241	16,788	16,697	15,995	15,552	15,671	140,255	187,472
YTY (%)	0.7	11.8	-2.2	10.0	5.0	-1.3	-8.6	10.8	12.3	-0.6	-0.5	-10.7	4.1	1.9

Comment: In Sept. the car sales increase by 12,3%. 2016 forecast is an increase of 1,9%.

Trend FY 2017 : 190,000 1.3

Car Sales Forecast : NORWAY Sept. 2016 - Car

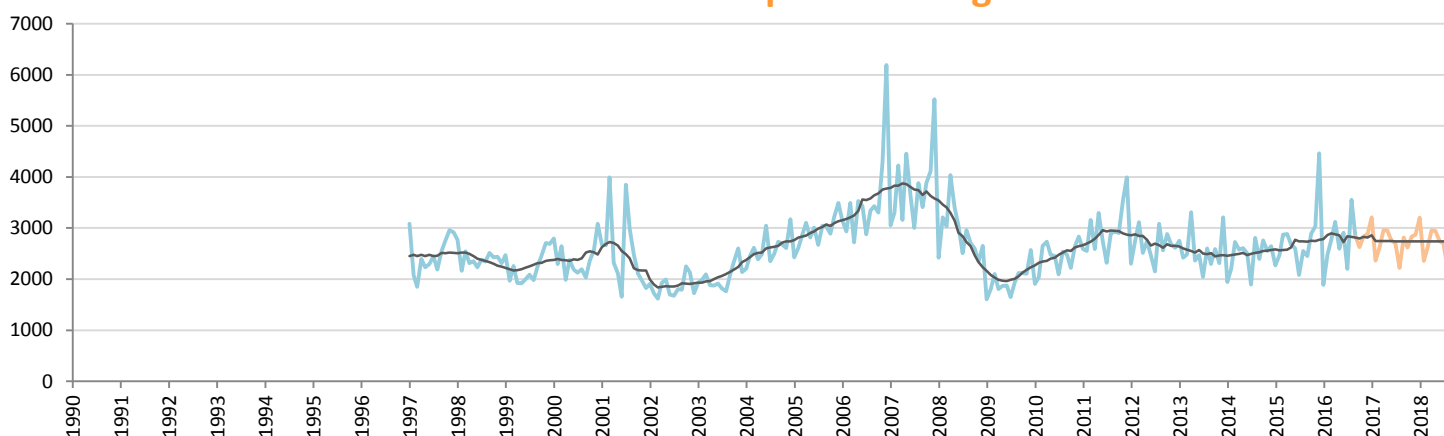


Data processing and forecast by CORAM

CORAM

	Jan.	Feb.	March	April	May	June	July	Aug.	Sept.	Oct.	Nov.	Dec.	YTD	FY
2015	10,523	10,685	14,159	12,782	12,036	14,207	12,394	12,604	12,421	13,197	12,600	13,078	111,811	150,686
2016	10,991	12,222	13,875	14,116	12,864	13,681	11,040	13,232	13,854	13,370	12,710	12,794	115,875	154,749
YTY (%)	4.4	14.4	-2.0	10.4	6.9	-3.7	-10.9	5.0	11.5	1.3	0.9	-2.2	3.6	2.7

Car Sales Forecast : NORWAY Sept. 2016 - Light Com. Veh.

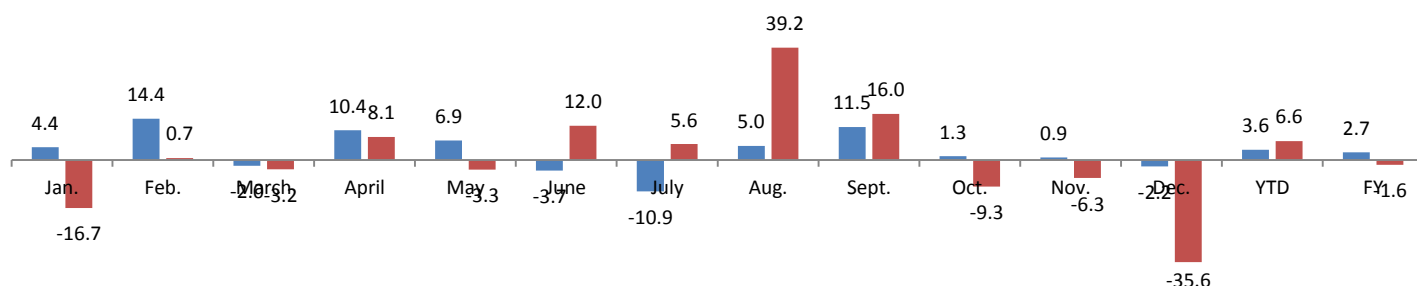


Data processing and forecast by CORAM

CORAM

	Jan.	Feb.	March	April	May	June	July	Aug.	Sept.	Oct.	Nov.	Dec.	YTD	FY
2015	2,268	2,468	2,870	2,887	2,684	2,599	2,085	2,554	2,450	2,892	3,032	4,465	22,865	33,254
2016	1,889	2,486	2,778	3,121	2,595	2,911	2,201	3,556	2,843	2,624	2,842	2,877	24,380	32,723
YTY (%)	-16.7	0.7	-3.2	8.1	-3.3	12.0	5.6	39.2	16.0	-9.3	-6.3	-35.6	6.6	-1.6

YTY variations



Data source: ACEA. Data processing and forecast by CORAM.

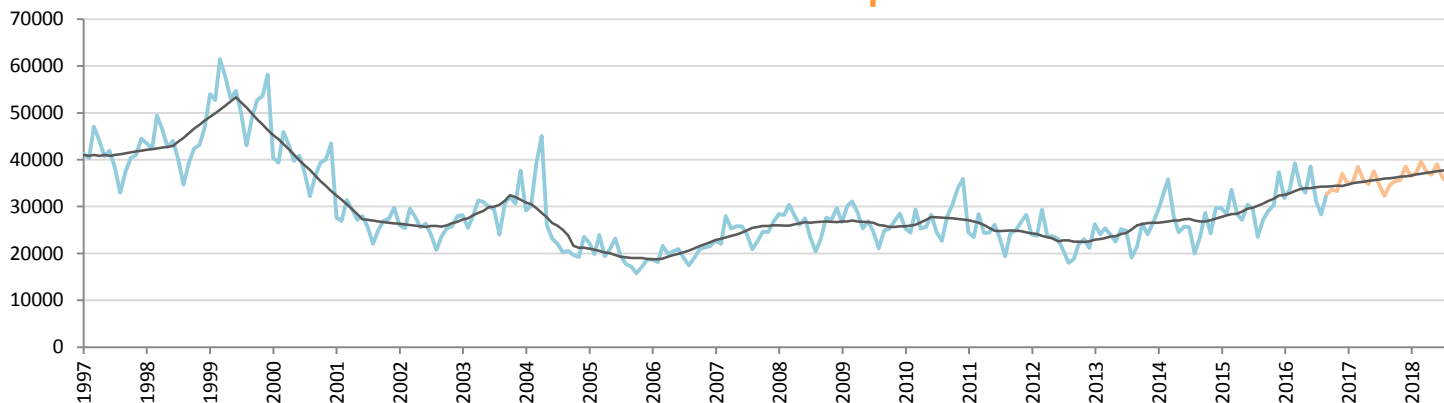
Car Sales Forecast : POLAND Sept. 2016

Total	Jan.	Feb.	March	April	May	June	July	Aug.	Sept.	Oct.	Nov.	Dec.	YTD	FY
2015	32,900	32,303	38,353	32,554	31,401	34,554	33,998	27,131	32,017	34,013	35,327	43,705	295,211	408,256
2016	35,783	38,283	44,571	39,827	37,918	44,157	35,682	33,735	37,385	39,477	39,277	43,305	347,341	469,400
YTY (%)	8.8	18.5	16.2	22.3	20.8	27.8	5.0	24.3	16.8	16.1	11.2	-0.9	17.7	15.0

Comment: In Sept. the car sales increase by 16,8%. 2016 forecast is an increase of 15%.

Trend FY 2017 : 499,000 6.3

Car Sales Forecast : POLAND Sept. 2016 - Car

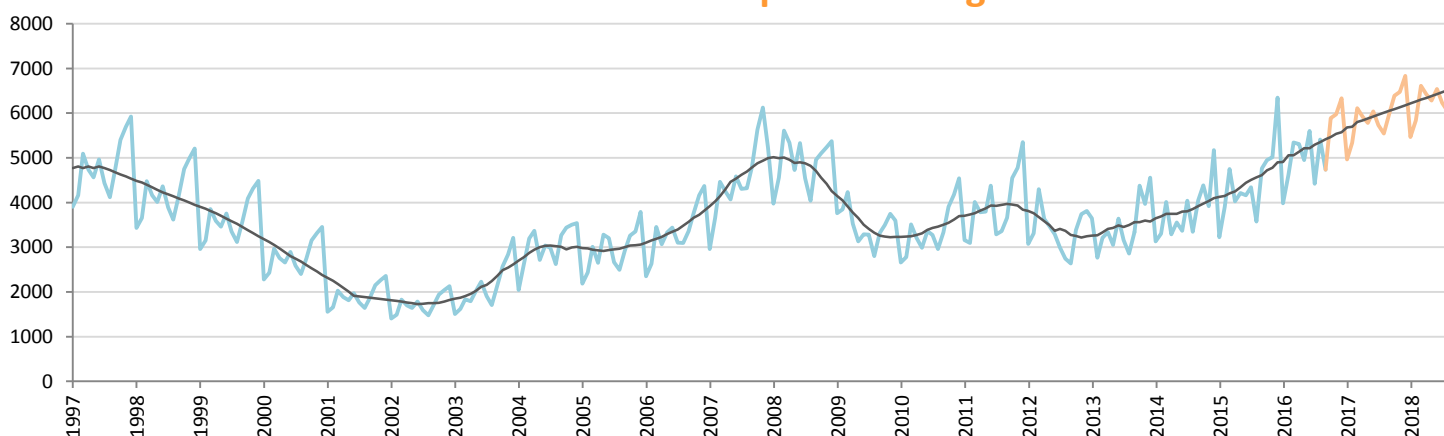


Data processing and forecast by CORAM

CORAM

	Jan.	Feb.	March	April	May	June	July	Aug.	Sept.	Oct.	Nov.	Dec.	YTD	FY
2015	29,673	28,396	33,601	28,526	27,186	30,390	29,654	23,559	27,255	29,062	30,312	37,358	258,240	354,972
2016	31,796	33,663	39,229	34,517	32,968	38,555	31,262	28,323	32,653	33,586	33,306	36,976	302,966	406,834
YTY (%)	7.2	18.5	16.7	21.0	21.3	26.9	5.4	20.2	19.8	15.6	9.9	-1.0	17.3	14.6

Car Sales Forecast : POLAND Sept. 2016 - Light Com. Veh.

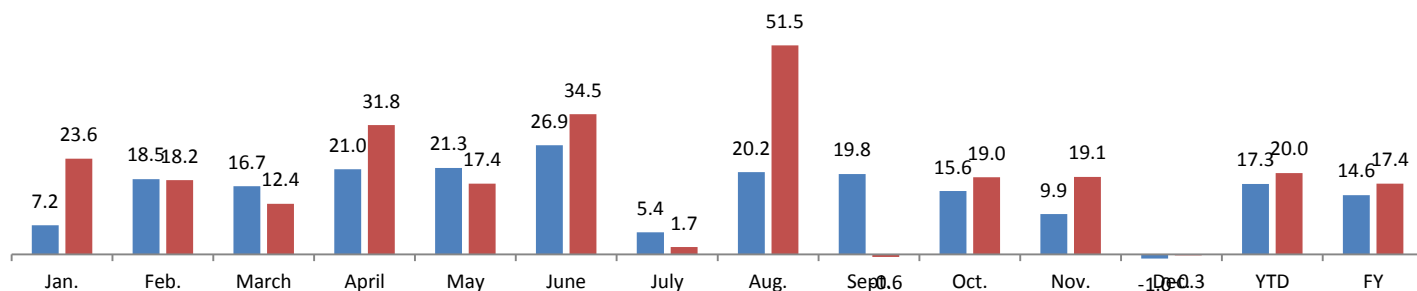


Data processing and forecast by CORAM

CORAM

	Jan.	Feb.	March	April	May	June	July	Aug.	Sept.	Oct.	Nov.	Dec.	YTD	FY
2015	3,227	3,907	4,752	4,028	4,215	4,164	4,344	3,572	4,762	4,951	5,015	6,347	36,971	53,284
2016	3,987	4,620	5,342	5,310	4,950	5,602	4,420	5,412	4,732	5,891	5,971	6,329	44,375	62,566
YTY (%)	23.6	18.2	12.4	31.8	17.4	34.5	1.7	51.5	-0.6	19.0	19.1	-0.3	20.0	17.4

YTY variations



Data source: ACEA. Data processing and forecast by CORAM.

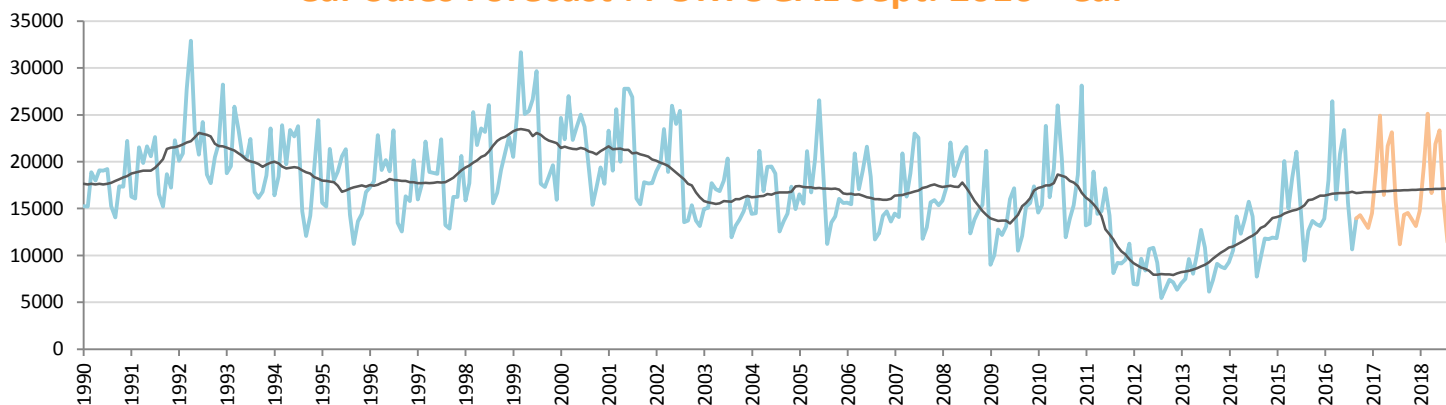
Car Sales Forecast : PORTUGAL Sept. 2016

Total	Jan.	Feb.	March	April	May	June	July	Aug.	Sept.	Oct.	Nov.	Dec.	YTD	FY
2015	13,770	16,442	22,697	17,410	20,753	23,875	18,101	11,372	15,180	16,468	16,369	16,854	159,600	209,291
2016	15,974	20,238	30,277	18,578	23,535	26,629	18,442	12,847	16,949	17,585	17,216	18,118	183,469	236,388
YTY (%)	16.0	23.1	33.4	6.7	13.4	11.5	1.9	13.0	11.7	6.8	5.2	7.5	15.0	12.9

Comment: In Sept. the car sales increase by 11,7%. 2016 forecast is an increase of 12,9%.

Trend FY 2017 : 245,000 3.6

Car Sales Forecast : PORTUGAL Sept. 2016 - Car

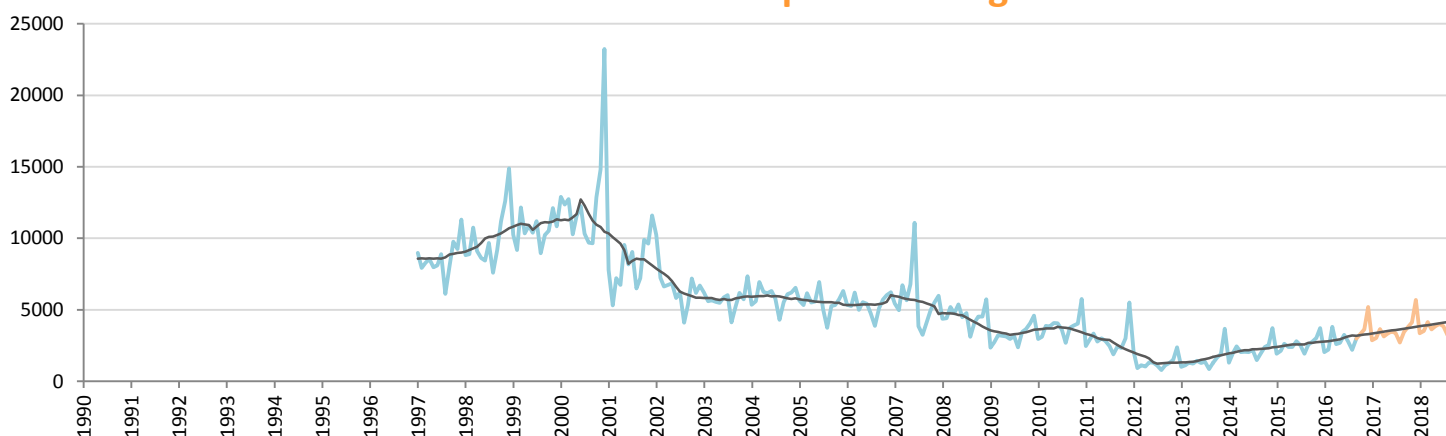


Data processing and forecast by CORAM

CORAM

	Jan.	Feb.	March	April	May	June	July	Aug.	Sept.	Oct.	Nov.	Dec.	YTD	FY
2015	11,840	14,307	20,081	15,016	18,345	21,072	15,560	9,436	12,625	13,696	13,343	13,126	138,282	178,447
2016	13,938	18,025	26,458	15,984	20,836	23,376	15,638	10,649	13,965	14,296	13,595	12,923	158,869	199,683
YTY (%)	17.7	26.0	31.8	6.4	13.6	10.9	0.5	12.9	10.6	4.4	1.9	-1.5	14.9	11.9

Car Sales Forecast : PORTUGAL Sept. 2016 - Light Com. Veh.

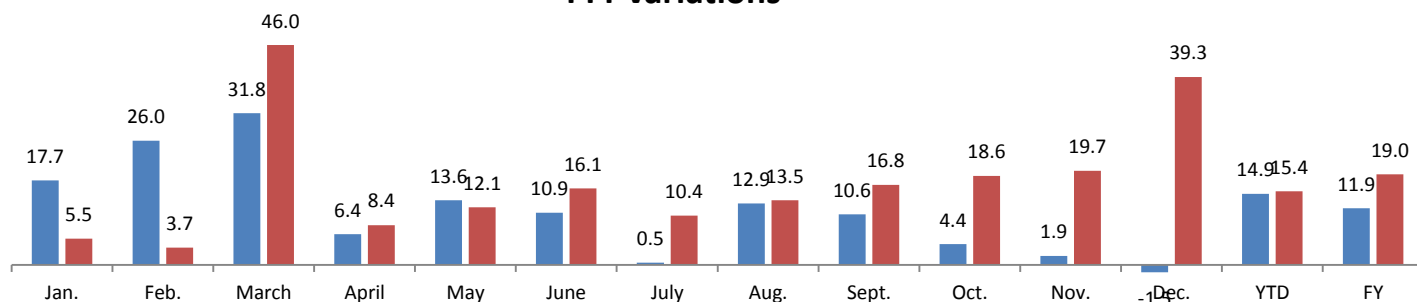


Data processing and forecast by CORAM

CORAM

	Jan.	Feb.	March	April	May	June	July	Aug.	Sept.	Oct.	Nov.	Dec.	YTD	FY
2015	1,930	2,135	2,616	2,394	2,408	2,803	2,541	1,936	2,555	2,772	3,026	3,728	21,318	30,844
2016	2,036	2,213	3,819	2,594	2,699	3,253	2,804	2,198	2,984	3,289	3,622	5,194	24,600	36,705
YTY (%)	5.5	3.7	46.0	8.4	12.1	16.1	10.4	13.5	16.8	18.6	19.7	39.3	15.4	19.0

YTY variations



Data source: ACEA. Data processing and forecast by CORAM.

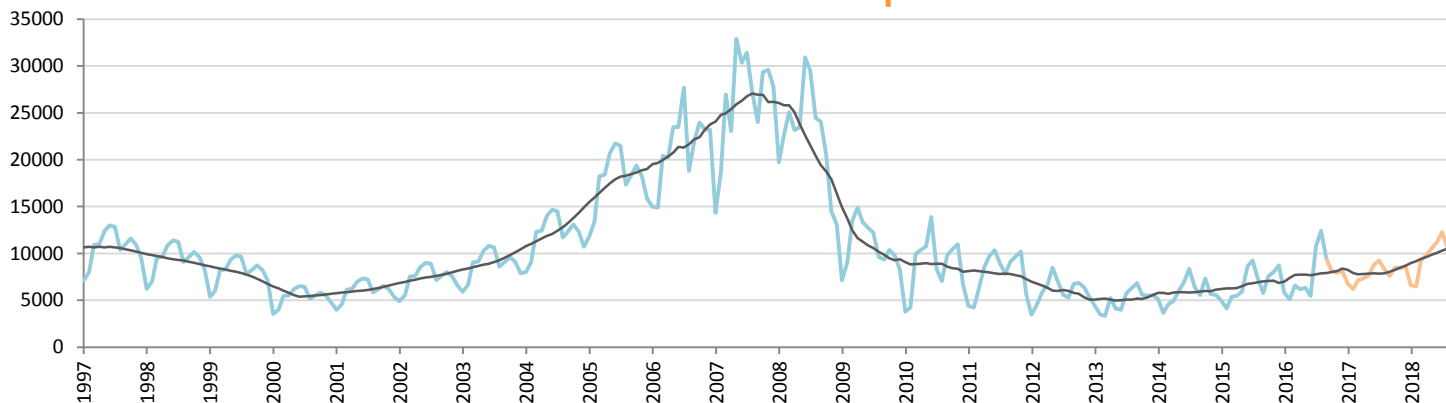
Car Sales Forecast : ROMANIA Sept. 2016

Total	Jan.	Feb.	March	April	May	June	July	Aug.	Sept.	Oct.	Nov.	Dec.	YTD	FY
2015	5,838	4,805	6,105	6,288	6,804	9,540	10,271	8,126	6,724	8,504	9,178	10,026	64,501	92,209
2016	6,823	6,199	7,711	7,332	7,451	6,464	11,929	13,614	10,849	9,555	9,422	9,542	78,372	106,891
YTY (%)	16.9	29.0	26.3	16.6	9.5	-32.2	16.1	67.5	61.3	12.4	2.7	-4.8	21.5	15.9

Comment: In Sept. the car sales increase by 61,3%. 2016 forecast is an increase of 15,9%.

Trend FY 2017 : 112,000 4.8

Car Sales Forecast : ROMANIA Sept. 2016 - Car

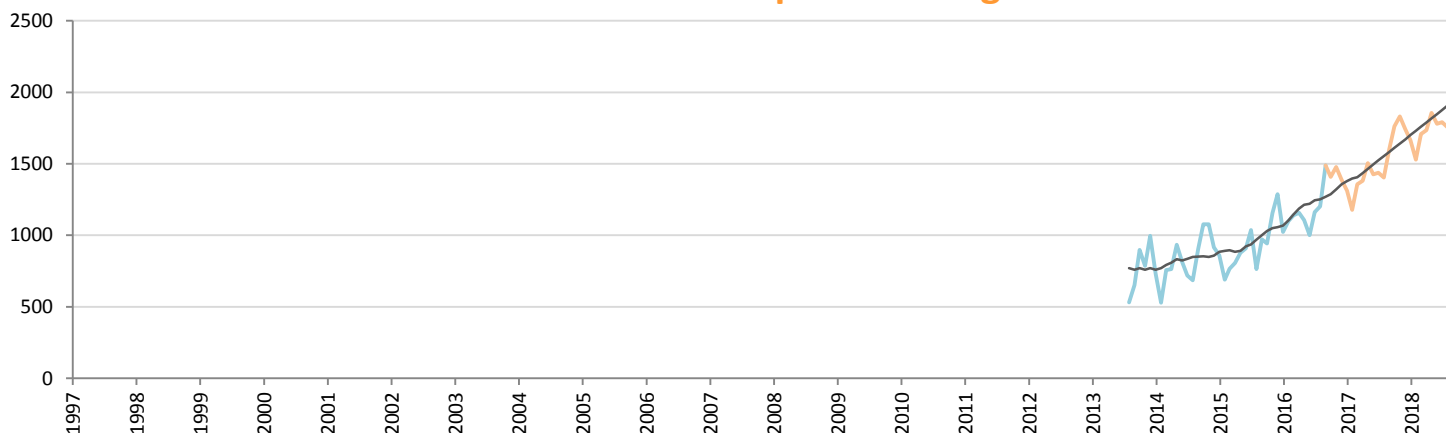


Data processing and forecast by CORAM

CORAM

	Jan.	Feb.	March	April	May	June	July	Aug.	Sept.	Oct.	Nov.	Dec.	YTD	FY
2015	4,978	4,116	5,339	5,482	5,927	8,630	9,234	7,362	5,752	7,562	8,022	8,739	56,820	81,143
2016	5,800	5,099	6,572	6,174	6,345	5,462	10,768	12,411	9,361	8,146	7,945	8,154	67,992	92,238
YTY (%)	16.5	23.9	23.1	12.6	7.1	-36.7	16.6	68.6	62.7	7.7	-1.0	-6.7	19.7	13.7

Car Sales Forecast : ROMANIA Sept. 2016 - Light Com. Veh.

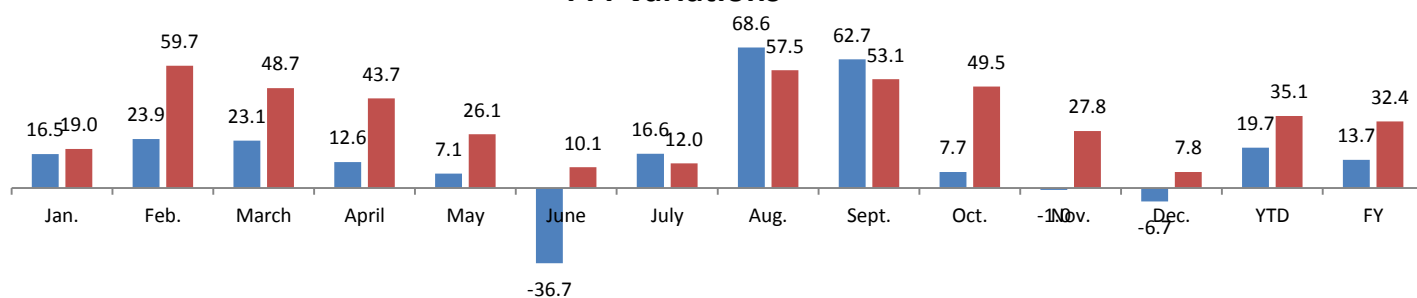


Data processing and forecast by CORAM

CORAM

	Jan.	Feb.	March	April	May	June	July	Aug.	Sept.	Oct.	Nov.	Dec.	YTD	FY
2015	860	689	766	806	877	910	1,037	764	972	942	1,156	1,287	7,681	11,066
2016	1,023	1,100	1,139	1,158	1,106	1,002	1,161	1,203	1,488	1,408	1,477	1,388	10,380	14,653
YTY (%)	19.0	59.7	48.7	43.7	26.1	10.1	12.0	57.5	53.1	49.5	27.8	7.8	35.1	32.4

YTY variations



Data source: ACEA. Data processing and forecast by CORAM.

Car Sales Forecast : SLOVENIA Sept. 2016

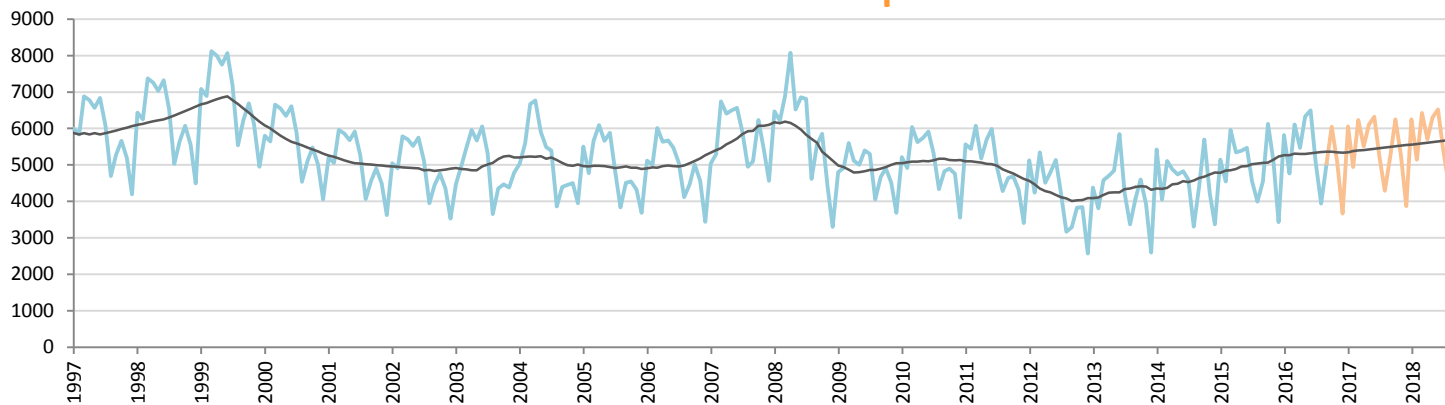
Total	Jan.	Feb.	March	April	May	June	July	Aug.	Sept.	Oct.	Nov.	Dec.	YTD	FY
2015	5,685	5,003	6,660	5,976	5,963	6,149	5,238	4,387	5,163	6,792	5,817	4,213	50,224	67,046
2016	6,710	5,510	6,971	6,326	7,101	7,315	5,794	4,579	5,814	6,854	5,897	4,430	56,120	73,301
YTY (%)	18.0	10.1	4.7	5.9	19.1	19.0	10.6	4.4	12.6	0.9	1.4	5.1	11.7	9.3

Comment: In Sept. the car sales increase by 12,6%. 2016 forecast is an increase of 9,3%.

Trend FY 2017 :

74,600 1.8

Car Sales Forecast : SLOVENIA Sept. 2016 - Car

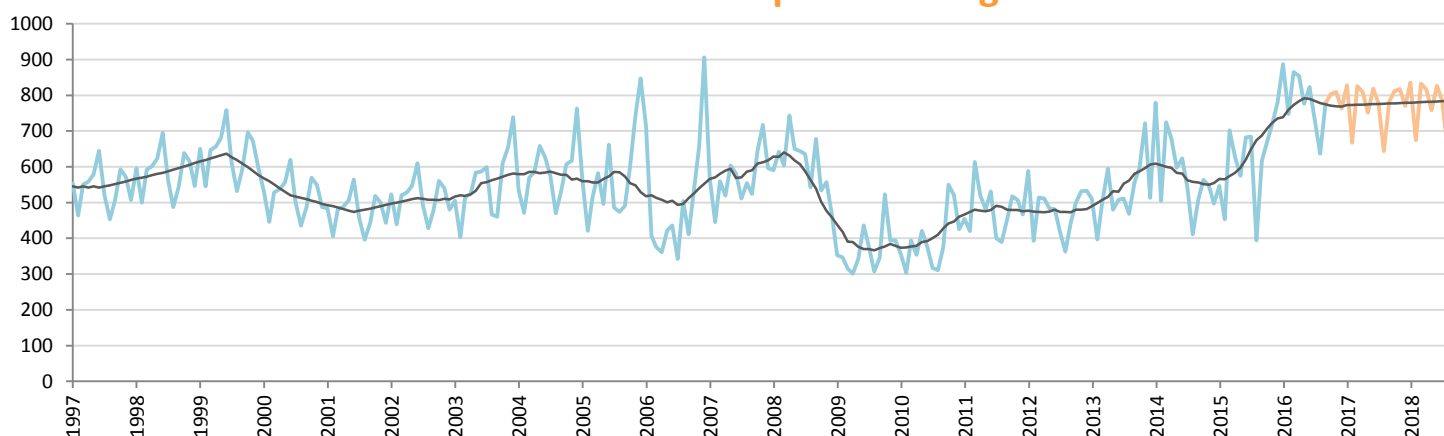


Data processing and forecast by CORAM

CORAM

	Jan.	Feb.	March	April	May	June	July	Aug.	Sept.	Oct.	Nov.	Dec.	YTD	FY
2015	5,139	4,550	5,958	5,348	5,388	5,467	4,554	3,993	4,546	6,123	5,095	3,433	44,943	59,594
2016	5,823	4,762	6,106	5,472	6,325	6,492	5,062	3,942	5,036	6,051	5,087	3,667	49,020	63,825
YTY (%)	13.3	4.7	2.5	2.3	17.4	18.7	11.2	-1.3	10.8	-1.2	-0.2	6.8	9.1	7.1

Car Sales Forecast : SLOVENIA Sept. 2016 - Light Com. Veh.

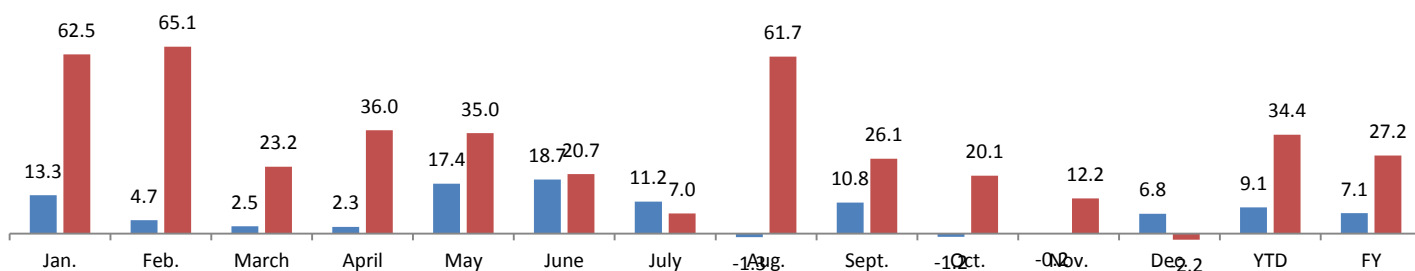


Data processing and forecast by CORAM

CORAM

	Jan.	Feb.	March	April	May	June	July	Aug.	Sept.	Oct.	Nov.	Dec.	YTD	FY
2015	546	453	702	628	575	682	684	394	617	669	722	780	5,281	7,452
2016	887	748	865	854	776	823	732	637	778	803	810	763	7,100	9,476
YTY (%)	62.5	65.1	23.2	36.0	35.0	20.7	7.0	61.7	26.1	20.1	12.2	-2.2	34.4	27.2

YTY variations



Data source: ACEA. Data processing and forecast by CORAM.

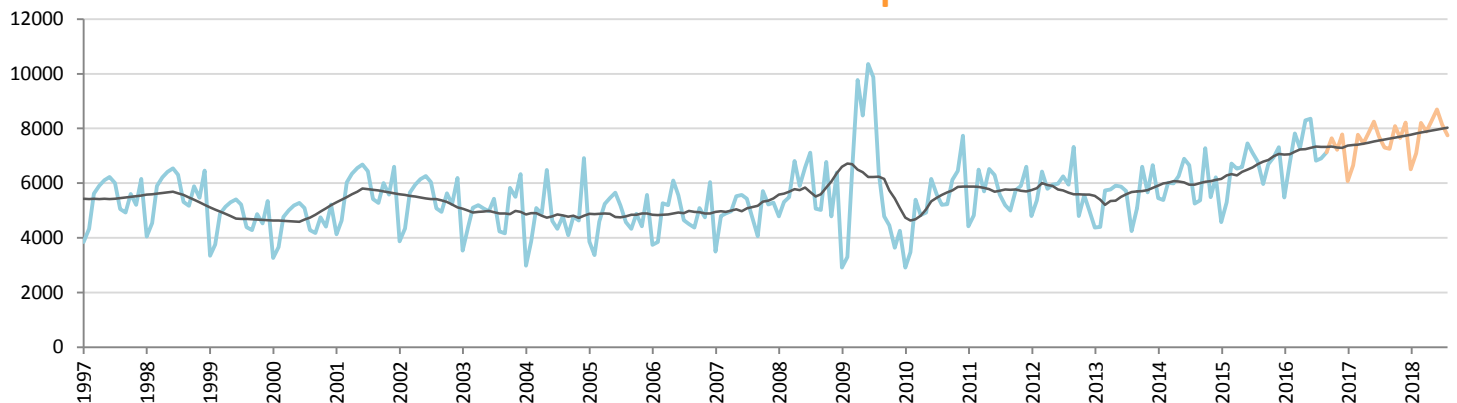
Car Sales Forecast : SLOVAKIA Sept. 2016

Total	Jan.	Feb.	March	April	May	June	July	Aug.	Sept.	Oct.	Nov.	Dec.	YTD	FY
2015	4,975	5,760	7,308	7,180	7,140	8,022	7,651	7,303	6,608	7,462	7,845	8,036	61,947	85,290
2016	5,978	7,313	8,526	7,893	9,034	9,062	7,285	7,830	7,551	8,588	8,136	8,892	70,472	96,088
YTY (%)	20.2	27.0	16.7	9.9	26.5	13.0	-4.8	7.2	14.3	15.1	3.7	10.7	13.8	12.7

Comment: In Sept. the car sales increase by 14,3%. 2016 forecast is an increase of 12,7%.

Trend FY 2017 :	100,000	4.1
-----------------	---------	-----

Car Sales Forecast : SLOVAKIA Sept. 2016 - Car

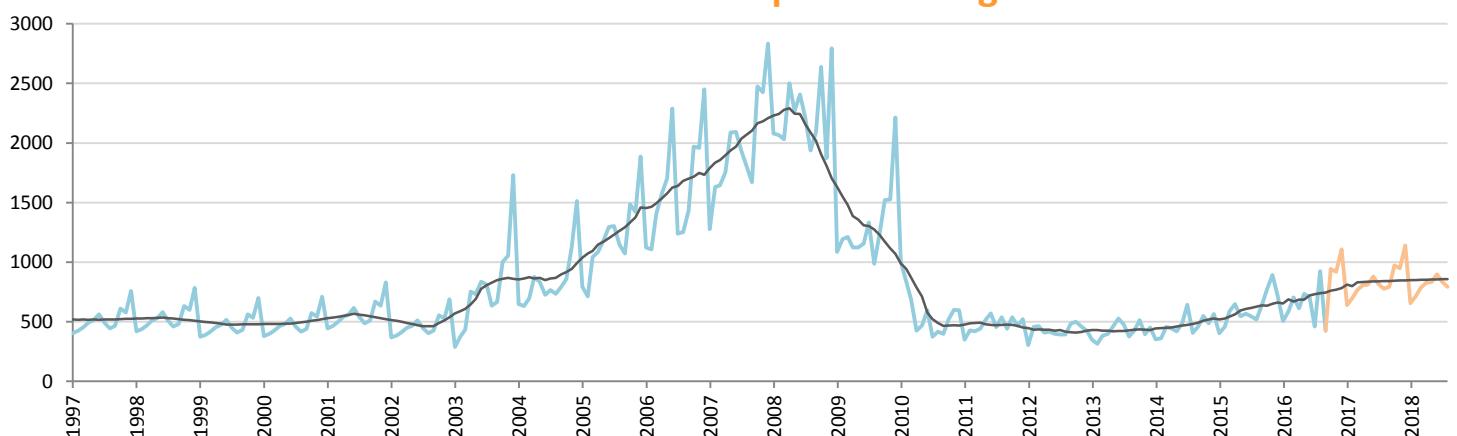


Data processing and forecast by CORAM

CORAM

	Jan.	Feb.	March	April	May	June	July	Aug.	Sept.	Oct.	Nov.	Dec.	YTD	FY
2015	4,572	5,303	6,718	6,532	6,594	7,454	7,106	6,785	5,969	6,691	6,953	7,316	57,033	77,993
2016	5,473	6,728	7,823	7,279	8,299	8,354	6,826	6,906	7,126	7,644	7,216	7,784	64,814	87,458
YTY (%)	19.7	26.9	16.4	11.4	25.9	12.1	-3.9	1.8	19.4	14.2	3.8	6.4	13.6	12.1

Car Sales Forecast : SLOVAKIA Sept. 2016 - Light Com. Veh.

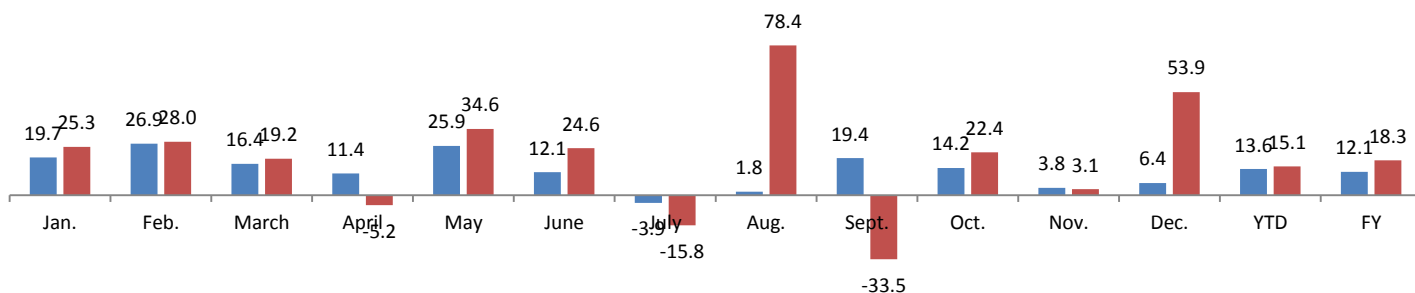


Data processing and forecast by CORAM

CORAM

	Jan.	Feb.	March	April	May	June	July	Aug.	Sept.	Oct.	Nov.	Dec.	YTD	FY
2015	403	457	590	648	546	568	545	518	639	771	892	720	4,914	7,297
2016	505	585	703	614	735	708	459	924	425	944	920	1,108	5,658	8,630
YTY (%)	25.3	28.0	19.2	-5.2	34.6	24.6	-15.8	78.4	-33.5	22.4	3.1	53.9	15.1	18.3

YTY variations



Data source: ACEA. Data processing and forecast by CORAM.

Car Sales Forecast : SWEDEN Sept. 2016

Total	Jan.	Feb.	March	April	May	June	July	Aug.	Sept.	Oct.	Nov.	Dec.	YTD	FY
2015	22,921	27,058	35,835	34,911	33,353	36,265	26,412	30,425	33,707	35,862	35,116	38,041	280,887	389,906
2016	24,451	31,079	39,404	38,304	38,838	40,996	26,953	32,557	36,946	37,292	36,151	38,699	309,528	421,670
YTY (%)	6.7	14.9	10.0	9.7	16.4	13.0	2.0	7.0	9.6	4.0	2.9	1.7	10.2	8.1

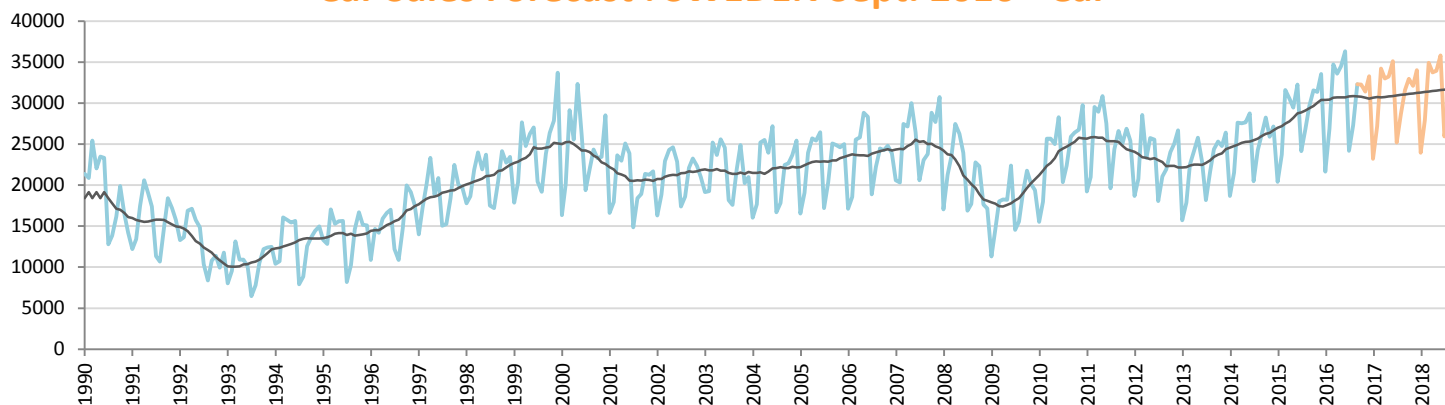
Comment: In Sept. the car sales increase by 9,6%. 2016 forecast is an increase of 8,1%.

Trend FY 2017 :

430,000

2.0

Car Sales Forecast : SWEDEN Sept. 2016 - Car

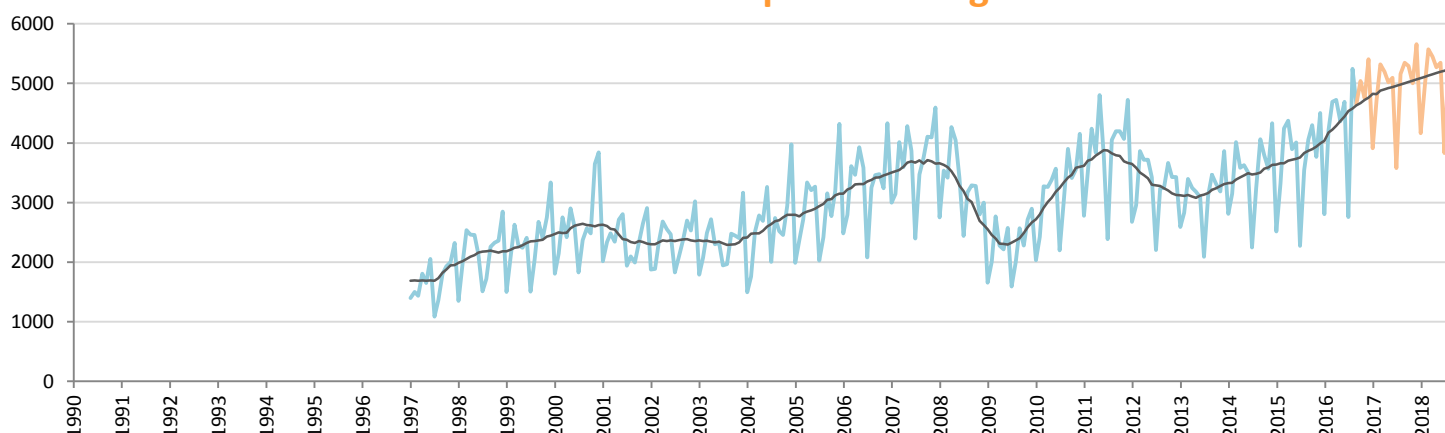


Data processing and forecast by CORAM

CORAM

	Jan.	Feb.	March	April	May	June	July	Aug.	Sept.	Oct.	Nov.	Dec.	YTD	FY
2015	20,408	23,735	31,590	30,536	29,458	32,257	24,139	26,877	29,653	31,563	31,352	33,540	248,653	345,108
2016	21,648	26,869	34,712	33,580	34,475	36,307	24,197	27,316	32,292	32,251	31,399	33,297	271,396	368,343
YTY (%)	6.1	13.2	9.9	10.0	17.0	12.6	0.2	1.6	8.9	2.2	0.1	-0.7	9.1	6.7

Car Sales Forecast : SWEDEN Sept. 2016 - Light Com. Veh.

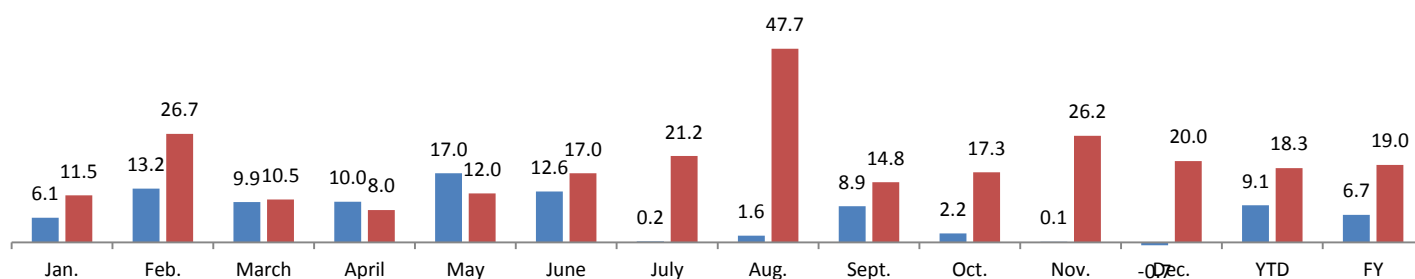


Data processing and forecast by CORAM

CORAM

	Jan.	Feb.	March	April	May	June	July	Aug.	Sept.	Oct.	Nov.	Dec.	YTD	FY
2015	2,513	3,323	4,245	4,375	3,895	4,008	2,273	3,548	4,054	4,299	3,764	4,501	32,234	44,798
2016	2,803	4,210	4,692	4,724	4,363	4,689	2,756	5,241	4,654	5,041	4,752	5,402	38,132	53,327
YTY (%)	11.5	26.7	10.5	8.0	12.0	17.0	21.2	47.7	14.8	17.3	26.2	20.0	18.3	19.0

YTY variations



Data source: ACEA. Data processing and forecast by CORAM.