

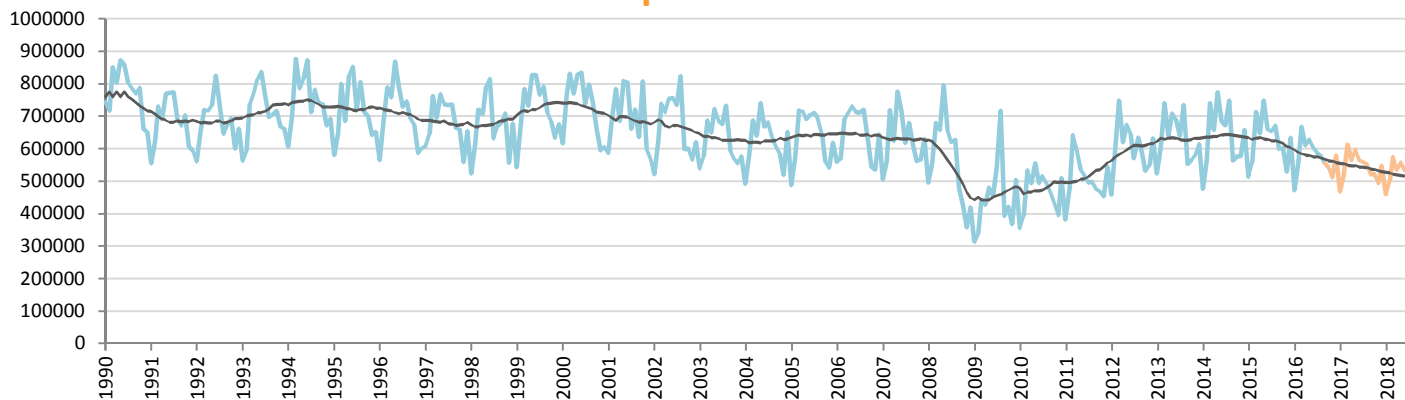
# Car Sales Forecast : USA Sept. 2016

Total	Jan.	Feb.	March	April	May	June	July	Aug.	Sept.	Oct.	Nov.	Dec.	YTD	FY
2015	1,145,924	1,252,466	1,537,820	1,448,354	1,627,210	1,470,613	1,504,705	1,569,207	1,435,124	1,446,561	1,315,688	1,632,659	12,991,423	17,386,331
2016	1,142,164	1,335,704	1,585,280	1,497,232	1,527,564	1,506,256	1,514,089	1,505,900	1,427,812	1,432,974	1,357,195	1,585,283	13,042,001	17,417,453
YTY (%)	-0.3	6.6	3.1	3.4	-6.1	2.4	0.6	-4.0	-0.5	-0.9	3.2	-2.9	0.4	0.2

Comment: In Sept. the car sales decrease by 0,5%. 2016 forecast is an increase of 0,2%.

Trend FY 2017 : 17,500,000 0.5

## Car Sales Forecast : USA Sept. 2016 - Car excl. MPV and SUV

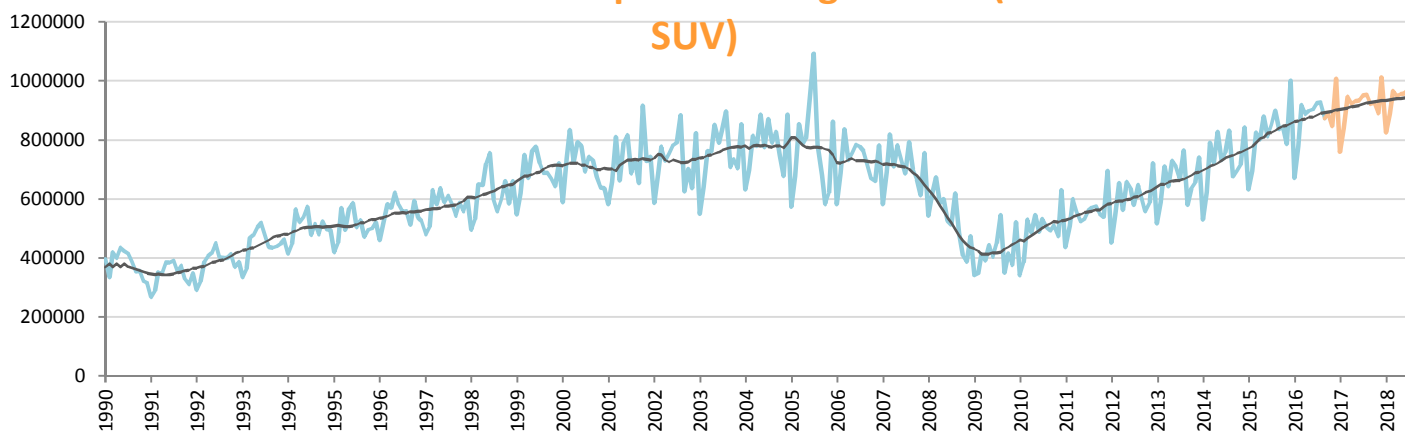


Data processing and forecast by CORAM

CORAM

	Jan.	Feb.	March	April	May	June	July	Aug.	Sept.	Oct.	Nov.	Dec.	YTD	FY
2015	514,238	557,542	711,800	647,943	747,306	659,595	652,903	670,582	598,743	601,313	530,015	632,741	5,760,652	7,524,721
2016	471,819	556,157	666,997	609,917	627,843	603,464	589,010	579,300	554,163	542,280	511,486	577,912	5,258,670	6,890,349
YTY (%)	-8.2	-0.2	-6.3	-5.9	-16.0	-8.5	-9.8	-13.6	-7.4	-9.8	-3.5	-8.7	-8.7	-8.4

## Car Sales Forecast : USA Sept. 2016 - Light Truck (incl. MPV and SUV)

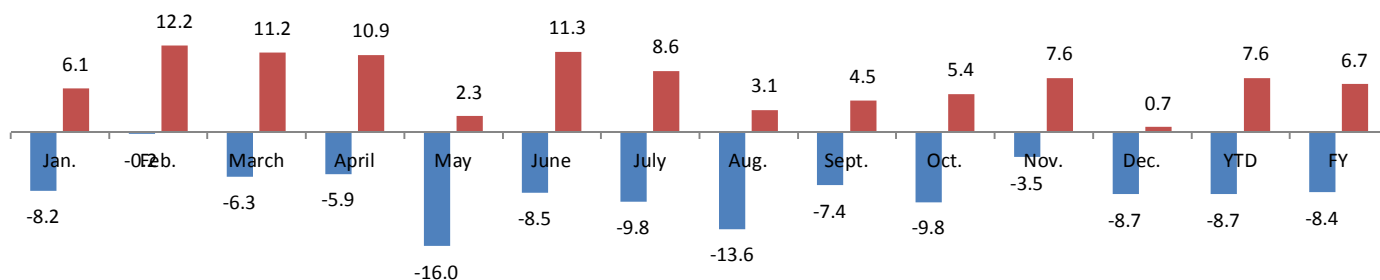


Data processing and forecast by CORAM

CORAM

	Jan.	Feb.	March	April	May	June	July	Aug.	Sept.	Oct.	Nov.	Dec.	YTD	FY
2015	631,686	694,924	826,020	800,411	879,904	811,018	851,802	898,625	836,381	845,248	785,673	999,918	7,230,771	9,861,610
2016	670,345	779,547	918,283	887,315	899,721	902,792	925,079	926,600	873,649	890,694	845,709	1,007,371	7,783,331	10,527,104
YTY (%)	6.1	12.2	11.2	10.9	2.3	11.3	8.6	3.1	4.5	5.4	7.6	0.7	7.6	6.7

### YTY variations



Data source: BEA. Data processing and forecast by CORAM.