

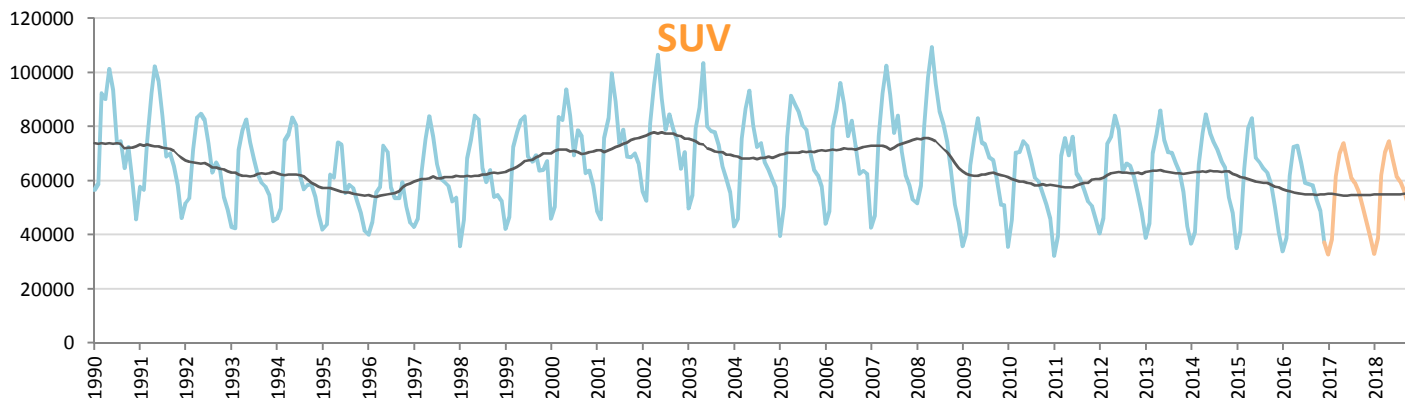
Car Sales Forecast : CANADA December 2016

| Total | Jan. | Feb. | March | April | May | June | July | Aug. | Sept. | Oct. | Nov. | Dec. | YTD | FY |
|---------|---------|---------|---------|---------|---------|---------|---------|---------|---------|---------|---------|---------|-----------|-----------|
| 2015 | 99,051 | 109,248 | 160,274 | 189,072 | 197,937 | 177,857 | 177,844 | 175,512 | 174,337 | 163,053 | 145,426 | 128,874 | 1,898,485 | 1,898,485 |
| 2016 | 108,553 | 119,201 | 175,142 | 200,327 | 194,866 | 191,088 | 173,354 | 172,034 | 173,460 | 154,701 | 160,573 | 125,600 | 1,948,899 | 1,948,899 |
| YTY (%) | 9.6 | 9.1 | 9.3 | 6.0 | -1.6 | 7.4 | -2.5 | -2.0 | -0.5 | -5.1 | 10.4 | -2.5 | 2.7 | 2.7 |

Comment: In December the car sales decrease by 2,5%. In 2016 car sales increased by 2,7%.

Trend FY 2017 : 1,990,000 2.1

Car Sales Forecast : CANADA December 2016 - Car excl. MPV and SUV

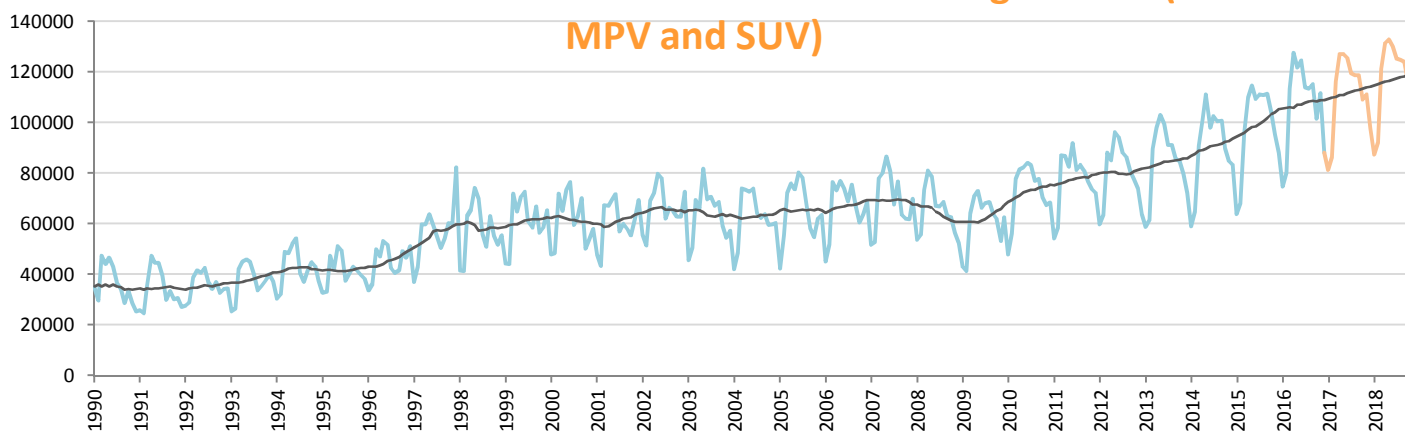


Data processing and forecast by CORAM

CORAM

| | Jan. | Feb. | March | April | May | June | July | Aug. | Sept. | Oct. | Nov. | Dec. | YTD | FY |
|---------|--------|--------|--------|--------|--------|--------|--------|--------|--------|--------|--------|--------|---------|---------|
| 2015 | 35,170 | 41,199 | 64,322 | 79,258 | 83,102 | 68,457 | 66,773 | 64,622 | 62,980 | 58,711 | 50,306 | 40,819 | 715,719 | 715,719 |
| 2016 | 33,826 | 38,950 | 61,729 | 72,574 | 73,011 | 66,494 | 59,275 | 58,645 | 58,182 | 53,114 | 48,945 | 37,357 | 662,102 | 662,102 |
| YTY (%) | -3.8 | -5.5 | -4.0 | -8.4 | -12.1 | -2.9 | -11.2 | -9.2 | -7.6 | -9.5 | -2.7 | -8.5 | -7.5 | -7.5 |

Car Sales Forecast : CANADA December 2016 - Light Truck (incl. MPV and SUV)

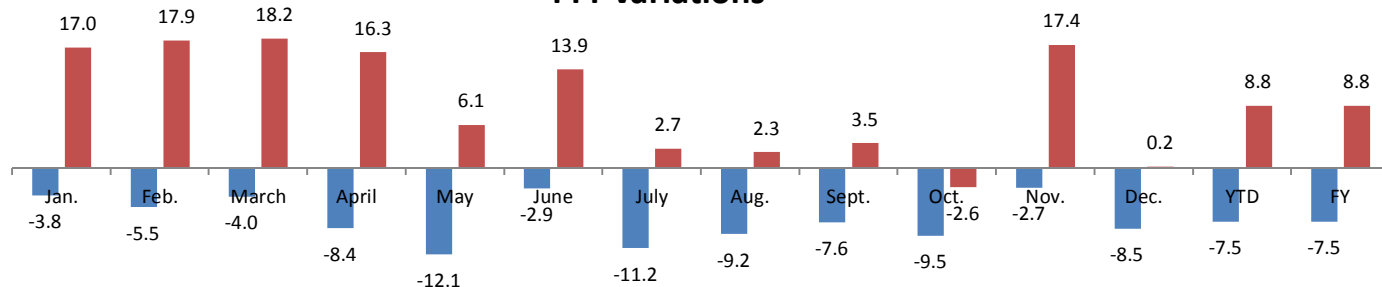


Data processing and forecast by CORAM

CORAM

| | Jan. | Feb. | March | April | May | June | July | Aug. | Sept. | Oct. | Nov. | Dec. | YTD | FY |
|---------|--------|--------|---------|---------|---------|---------|---------|---------|---------|---------|---------|--------|-----------|-----------|
| 2015 | 63,881 | 68,049 | 95,952 | 109,814 | 114,835 | 109,400 | 111,071 | 110,890 | 111,357 | 104,342 | 95,120 | 88,055 | 1,182,766 | 1,182,766 |
| 2016 | 74,727 | 80,251 | 113,413 | 127,753 | 121,855 | 124,594 | 114,079 | 113,389 | 115,278 | 101,587 | 111,628 | 88,243 | 1,286,797 | 1,286,797 |
| YTY (%) | 17.0 | 17.9 | 18.2 | 16.3 | 6.1 | 13.9 | 2.7 | 2.3 | 3.5 | -2.6 | 17.4 | 0.2 | 8.8 | 8.8 |

YTY variations



Data source: DESROSIERS. Data processing and forecast by CORAM.