

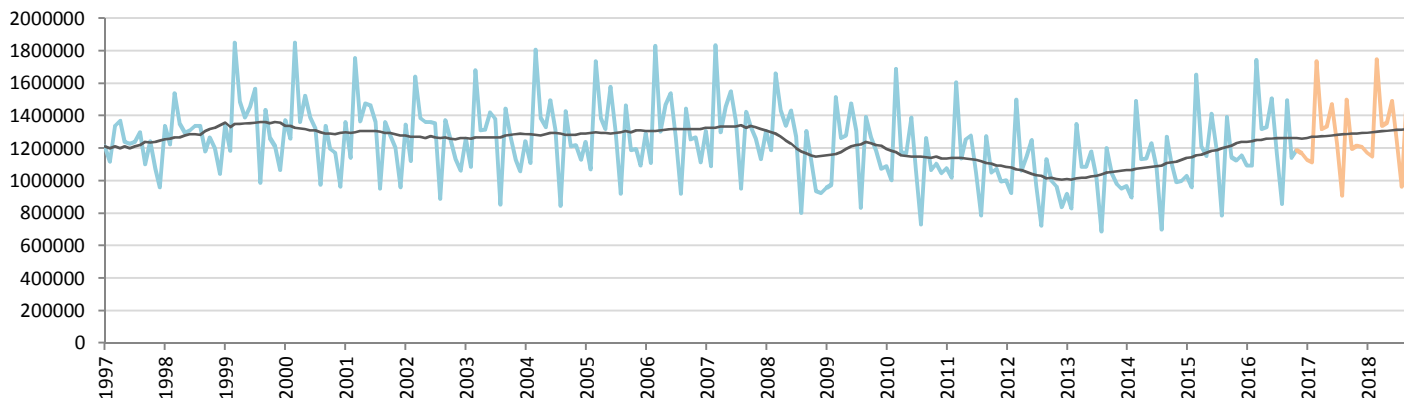
Car Sales Forecast : EUROPE AREA November 2016

Total	Jan.	Feb.	March	April	May	June	July	Aug.	Sept.	Oct.	Nov.	Dec.	YTD	FY
2015	1,150,601	1,075,729	1,847,246	1,356,003	1,290,011	1,584,535	1,325,431	880,059	1,572,836	1,300,525	1,279,053	1,324,184	14,662,029	15,986,213
2016	1,227,976	1,229,636	1,954,850	1,484,047	1,491,249	1,700,401	1,311,964	985,081	1,687,110	1,296,102	1,363,845	1,344,222	15,732,261	17,076,483
YTY (%)	6.7	14.3	5.8	9.4	15.6	7.3	-1.0	11.9	7.3	-0.3	6.6	1.5	7.3	6.8

Comment: In November the car sales increase by 6,6%. 2016 forecast is an increase of 6,8%.

Trend FY 2017 : 17,400,000 1.9

Car Sales Forecast : EUROPE AREA November 2016 - Car

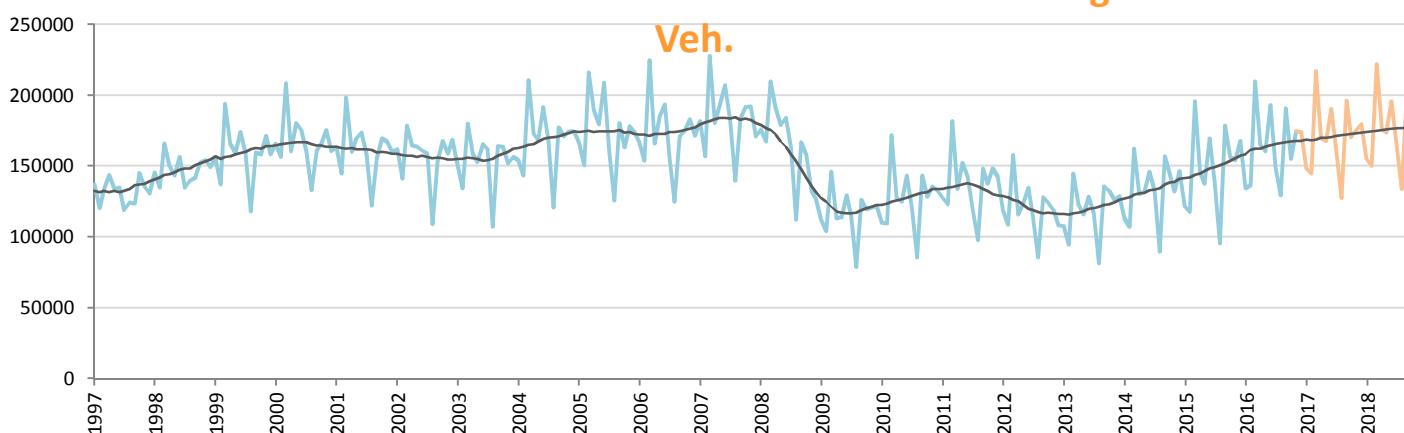


Data processing and forecast by CORAM

CORAM

	Jan.	Feb.	March	April	May	June	July	Aug.	Sept.	Oct.	Nov.	Dec.	YTD	FY
2015	1,028,796	958,239	1,651,528	1,210,374	1,152,509	1,414,756	1,187,442	784,483	1,394,223	1,144,109	1,124,964	1,156,489	13,051,423	14,207,912
2016	1,093,565	1,092,825	1,744,986	1,318,820	1,330,599	1,507,303	1,163,087	855,466	1,496,206	1,140,742	1,189,181	1,170,280	13,932,780	15,103,060
YTY (%)	6.3	14.0	5.7	9.0	15.5	6.5	-2.1	9.0	7.3	-0.3	5.7	1.2	6.8	6.3

Car Sales Forecast : EUROPE AREA November 2016 - Light Com. Veh.

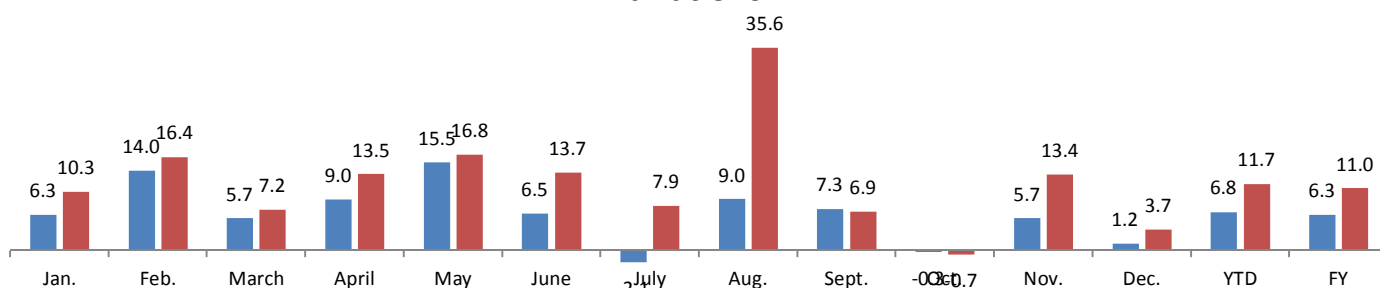


Data processing and forecast by CORAM

CORAM

	Jan.	Feb.	March	April	May	June	July	Aug.	Sept.	Oct.	Nov.	Dec.	YTD	FY
2015	121,805	117,490	195,718	145,629	137,502	169,779	137,989	95,576	178,613	156,416	154,089	167,695	1,610,606	1,778,301
2016	134,411	136,811	209,864	165,227	160,650	193,098	148,877	129,615	190,904	155,360	174,664	173,942	1,799,481	1,973,423
YTY (%)	10.3	16.4	7.2	13.5	16.8	13.7	7.9	35.6	6.9	-0.7	13.4	3.7	11.7	11.0

YTY variations



Data source: Compiled and processed by CORAM Countries = European Union + AELE

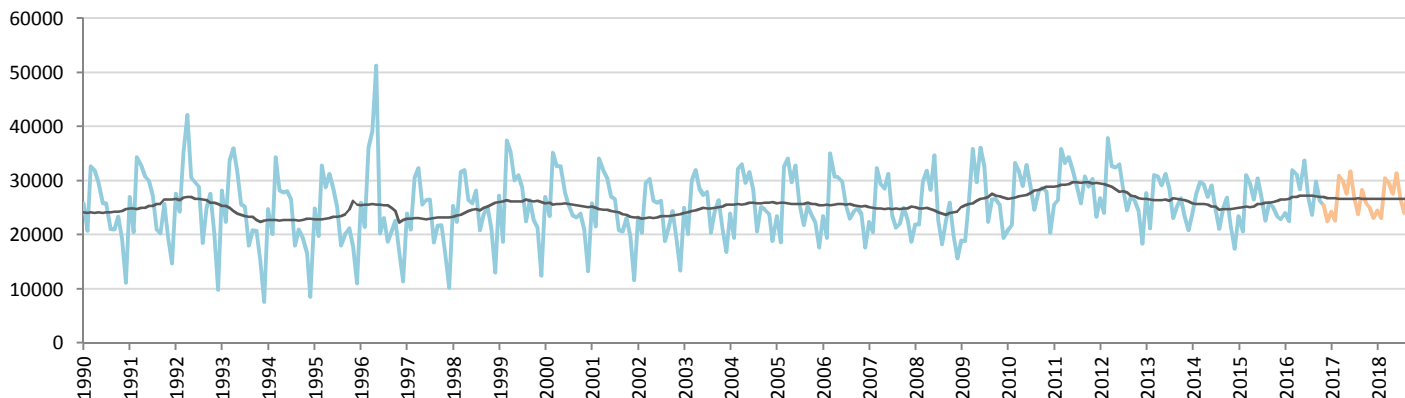
Car Sales Forecast : AUSTRIA November 2016

Total	Jan.	Feb.	March	April	May	June	July	Aug.	Sept.	Oct.	Nov.	Dec.	YTD	FY
2015	25,601	22,757	34,114	32,642	29,113	33,489	29,974	25,093	28,955	28,083	26,176	25,420	315,997	341,417
2016	26,304	25,338	35,501	34,442	31,282	37,469	29,691	27,116	32,706	28,950	28,526	25,386	337,325	362,711
YTY (%)	2.7	11.3	4.1	5.5	7.5	11.9	-0.9	8.1	13.0	3.1	9.0	-0.1	6.7	6.2

Comment: In November the car sales increase by 9%. 2016 forecast is an increase of 6,2%.

Trend FY 2017 : 358,000 -1.3

Car Sales Forecast : AUSTRIA November 2016 - Car

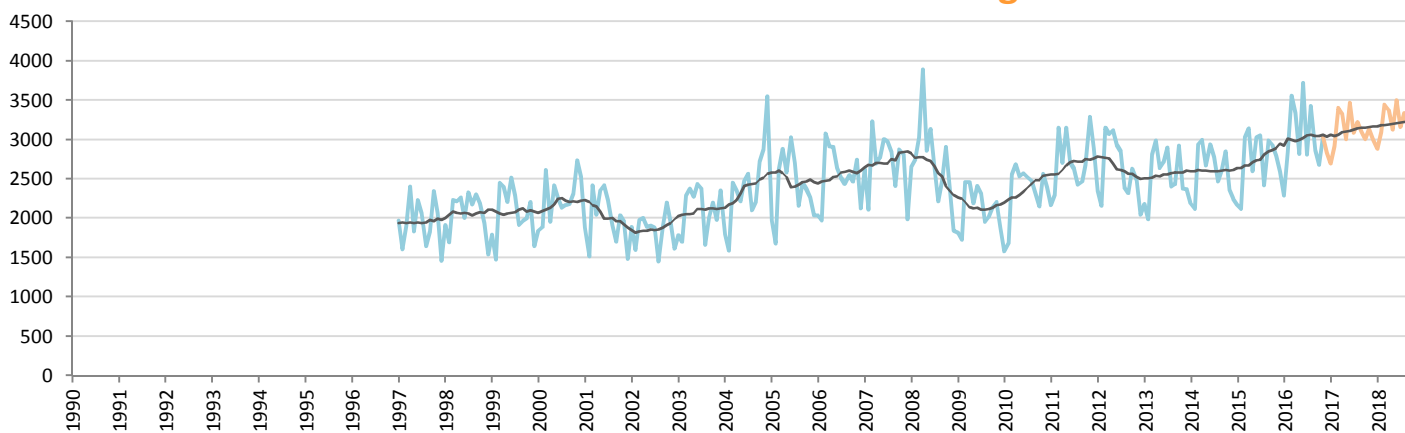


Data processing and forecast by CORAM

CORAM

	Jan.	Feb.	March	April	May	June	July	Aug.	Sept.	Oct.	Nov.	Dec.	YTD	FY
2015	23,427	20,641	31,086	29,500	26,517	30,462	26,917	22,677	25,966	25,149	23,381	22,832	285,723	308,555
2016	24,019	22,495	31,941	31,102	28,462	33,751	26,882	23,690	29,836	26,273	25,491	22,552	303,942	326,494
YTY (%)	2.5	9.0	2.8	5.4	7.3	10.8	-0.1	4.5	14.9	4.5	9.0	-1.2	6.4	5.8

Car Sales Forecast : AUSTRIA November 2016 - Light Com. Veh.

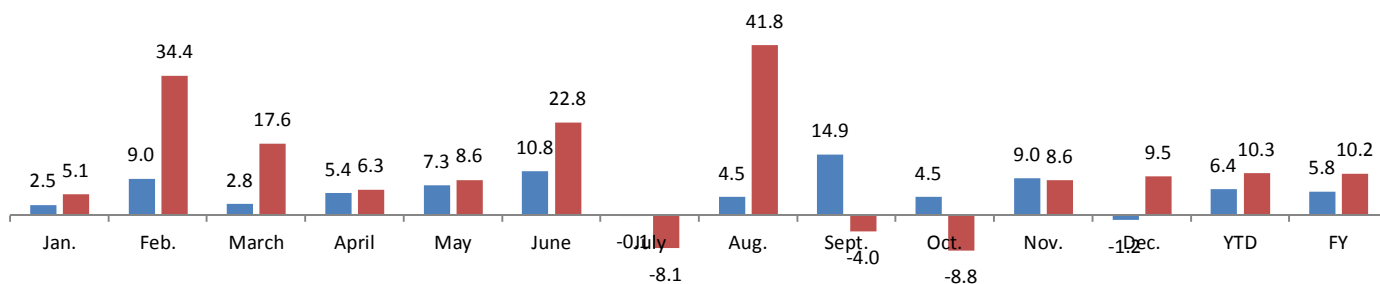


Data processing and forecast by CORAM

CORAM

	Jan.	Feb.	March	April	May	June	July	Aug.	Sept.	Oct.	Nov.	Dec.	YTD	FY
2015	2,174	2,116	3,028	3,142	2,596	3,027	3,057	2,416	2,989	2,934	2,795	2,588	30,274	32,862
2016	2,285	2,843	3,560	3,340	2,820	3,718	2,809	3,426	2,870	2,677	3,035	2,834	33,383	36,217
YTY (%)	5.1	34.4	17.6	6.3	8.6	22.8	-8.1	41.8	-4.0	-8.8	8.6	9.5	10.3	10.2

YTY variations



Data source: ACEA. Data processing and forecast by CORAM.

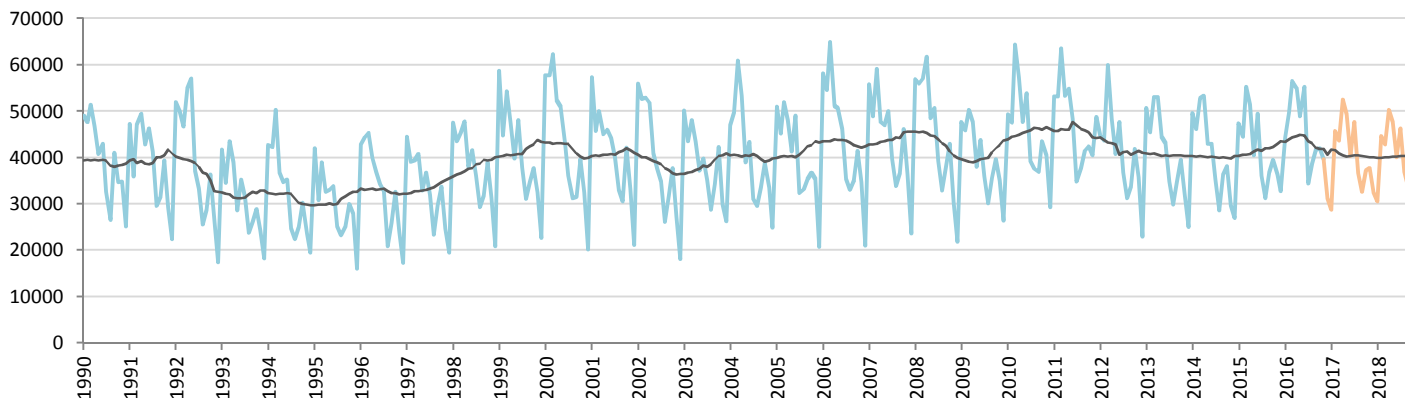
Car Sales Forecast : BELGIUM November 2016

Total	Jan.	Feb.	March	April	May	June	July	Aug.	Sept.	Oct.	Nov.	Dec.	YTD	FY
2015	52,916	49,591	61,476	57,680	45,867	55,305	40,474	35,209	41,234	44,588	40,808	37,126	525,148	562,274
2016	50,363	55,643	62,998	61,097	54,860	62,484	38,781	43,833	47,120	47,300	44,790	35,681	569,269	604,950
YTY (%)	-4.8	12.2	2.5	5.9	19.6	13.0	-4.2	24.5	14.3	6.1	9.8	-3.9	8.4	7.6

Comment: In November the car sales increase by 9,8%. 2016 forecast is an increase of 7,6%.

Trend FY 2017 : 556,000 -8.1

Car Sales Forecast : BELGIUM November 2016 - Car

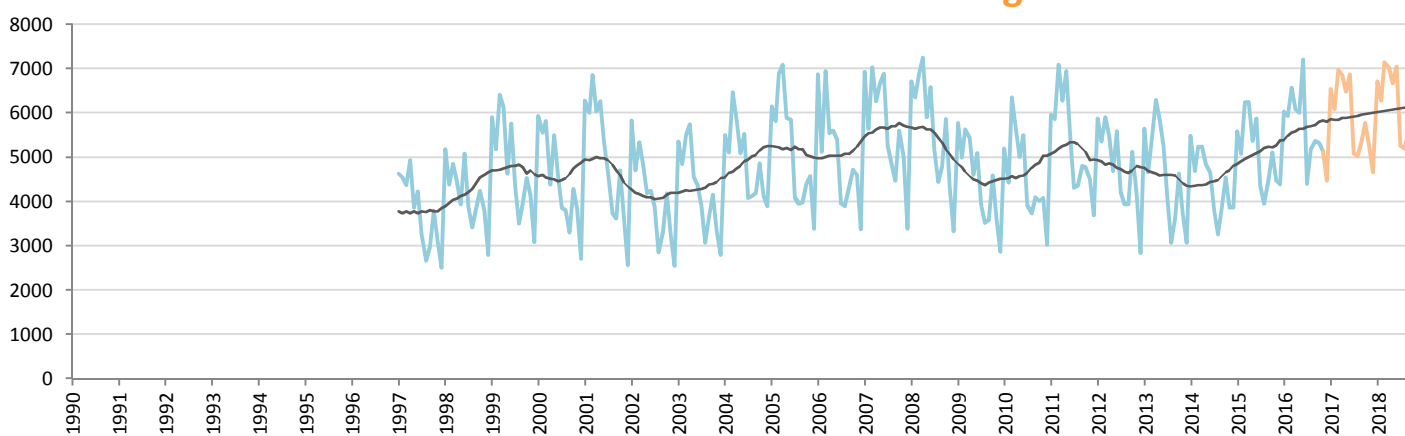


Data processing and forecast by CORAM

CORAM

	Jan.	Feb.	March	April	May	June	July	Aug.	Sept.	Oct.	Nov.	Dec.	YTD	FY
2015	47,324	44,504	55,245	51,423	40,502	49,426	36,121	31,252	36,725	39,474	36,329	32,741	468,325	501,066
2016	44,326	49,707	56,423	55,022	48,856	55,273	34,373	38,655	41,748	41,969	39,645	31,203	505,997	537,200
YTY (%)	-6.3	11.7	2.1	7.0	20.6	11.8	-4.8	23.7	13.7	6.3	9.1	-4.7	8.0	7.2

Car Sales Forecast : BELGIUM November 2016 - Light Com. Veh.

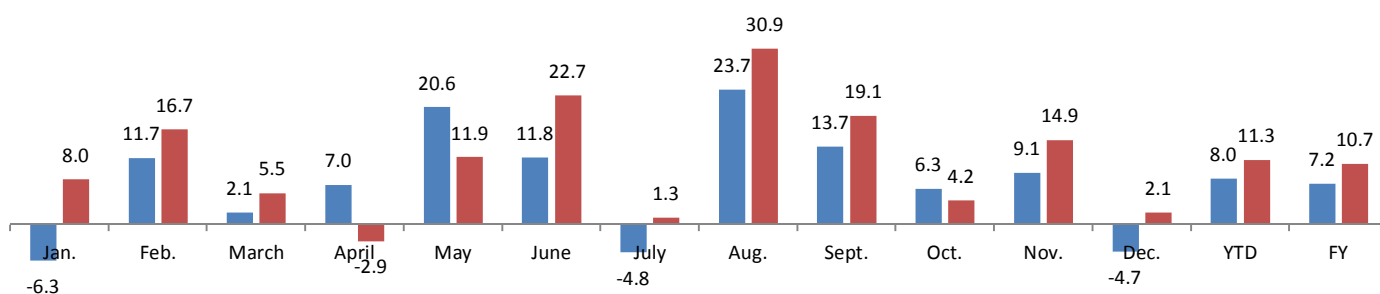


Data processing and forecast by CORAM

CORAM

	Jan.	Feb.	March	April	May	June	July	Aug.	Sept.	Oct.	Nov.	Dec.	YTD	FY
2015	5,592	5,087	6,231	6,257	5,365	5,879	4,353	3,957	4,509	5,114	4,479	4,385	56,823	61,208
2016	6,037	5,936	6,575	6,075	6,004	7,211	4,408	5,178	5,372	5,331	5,145	4,477	63,272	67,749
YTY (%)	8.0	16.7	5.5	-2.9	11.9	22.7	1.3	30.9	19.1	4.2	14.9	2.1	11.3	10.7

YTY variations



Data source: ACEA. Data processing and forecast by CORAM.

Car Sales Forecast : BULGARIA November 2016

Total	Jan.	Feb.	March	April	May	June	July	Aug.	Sept.	Oct.	Nov.	Dec.	YTD	FY
2015	1,790	1,779	2,555	2,318	2,306	3,051	2,421	1,899	2,283	2,284	2,606	3,722	25,292	29,014
2016	1,785	2,056	2,715	2,542	2,670	2,893	2,552	2,369	2,513	2,553	2,618	2,887	27,266	30,153
YTY (%)	-0.3	15.6	6.3	9.7	15.8	-5.2	5.4	24.7	10.1	11.8	0.5	-22.4	7.8	3.9

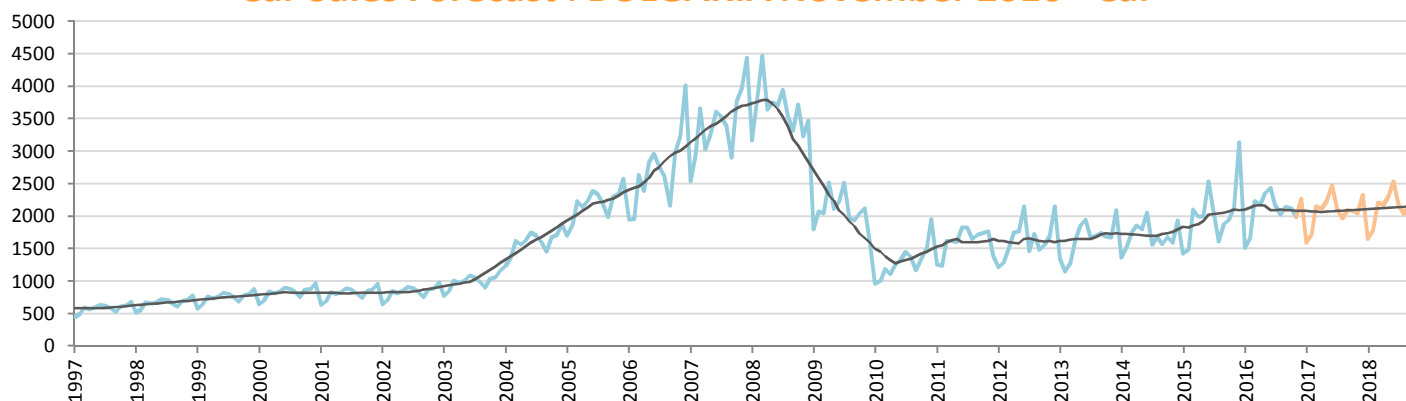
Comment: In November the car sales increase by 0,5%. 2016 forecast is an increase of 3,9%.

Trend FY 2017 :

30,800

2.1

Car Sales Forecast : BULGARIA November 2016 - Car

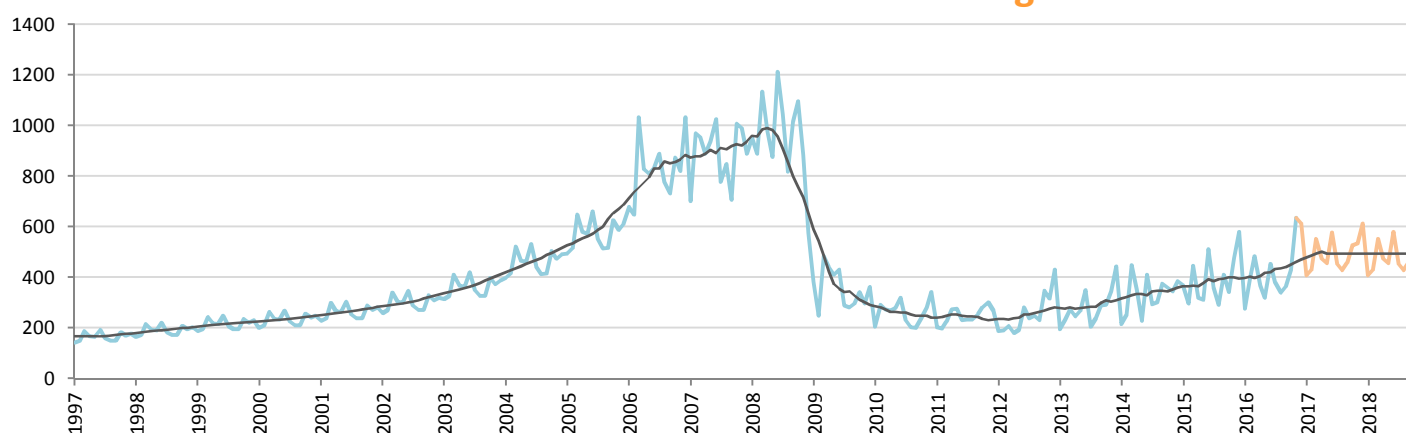


Data processing and forecast by CORAM

CORAM

	Jan.	Feb.	March	April	May	June	July	Aug.	Sept.	Oct.	Nov.	Dec.	YTD	FY
2015	1,419	1,481	2,108	1,998	1,995	2,540	2,061	1,607	1,872	1,941	2,130	3,141	21,152	24,293
2016	1,508	1,661	2,230	2,173	2,349	2,440	2,172	2,029	2,147	2,123	1,983	2,274	22,815	25,089
YTY (%)	6.3	12.2	5.8	8.8	17.7	-3.9	5.4	26.3	14.7	9.4	-6.9	-27.6	7.9	3.3

Car Sales Forecast : BULGARIA November 2016 - Light Com. Veh.

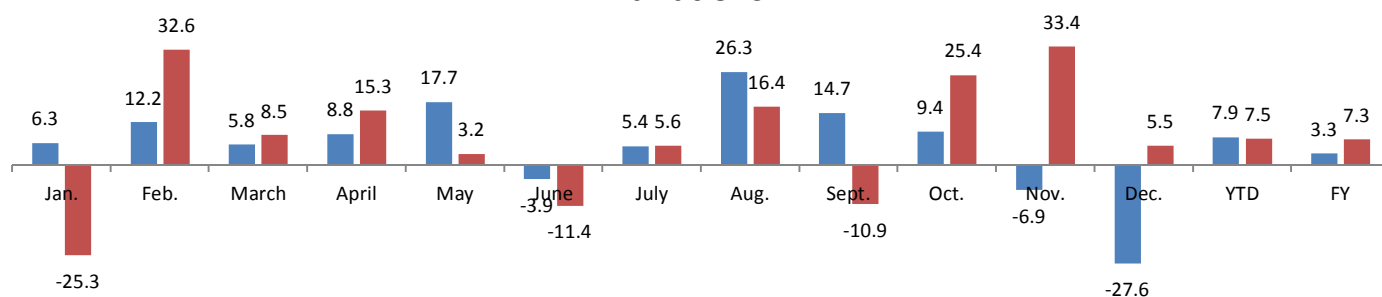


Data processing and forecast by CORAM

CORAM

	Jan.	Feb.	March	April	May	June	July	Aug.	Sept.	Oct.	Nov.	Dec.	YTD	FY
2015	371	298	447	320	311	511	360	292	411	343	476	581	4,140	4,721
2016	277	395	485	369	321	453	380	340	366	430	635	613	4,451	5,064
YTY (%)	-25.3	32.6	8.5	15.3	3.2	-11.4	5.6	16.4	-10.9	25.4	33.4	5.5	7.5	7.3

YTY variations



Data source: ACEA. Data processing and forecast by CORAM.

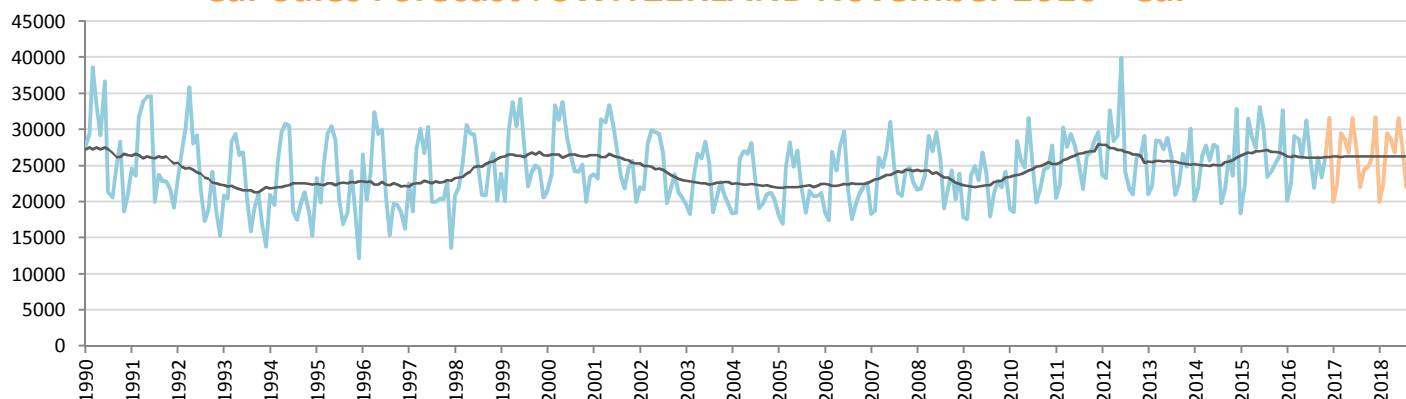
Car Sales Forecast : SWITZERLAND November 2016

Total	Jan.	Feb.	March	April	May	June	July	Aug.	Sept.	Oct.	Nov.	Dec.	YTD	FY
2015	20,682	24,732	34,558	31,566	30,039	36,230	32,709	25,697	26,680	27,685	28,974	35,250	319,552	354,802
2016	22,557	25,041	31,868	31,582	28,552	34,149	28,405	24,277	28,673	25,576	28,857	34,112	309,537	343,649
YTY (%)	9.1	1.2	-7.8	0.1	-5.0	-5.7	-13.2	-5.5	7.5	-7.6	-0.4	-3.2	-3.1	-3.1

Comment: In November the car sales decrease by 0,4%. 2016 forecast is a decrease of 3,1%.

Trend FY 2017 : 344,000 0.1

Car Sales Forecast : SWITZERLAND November 2016 - Car

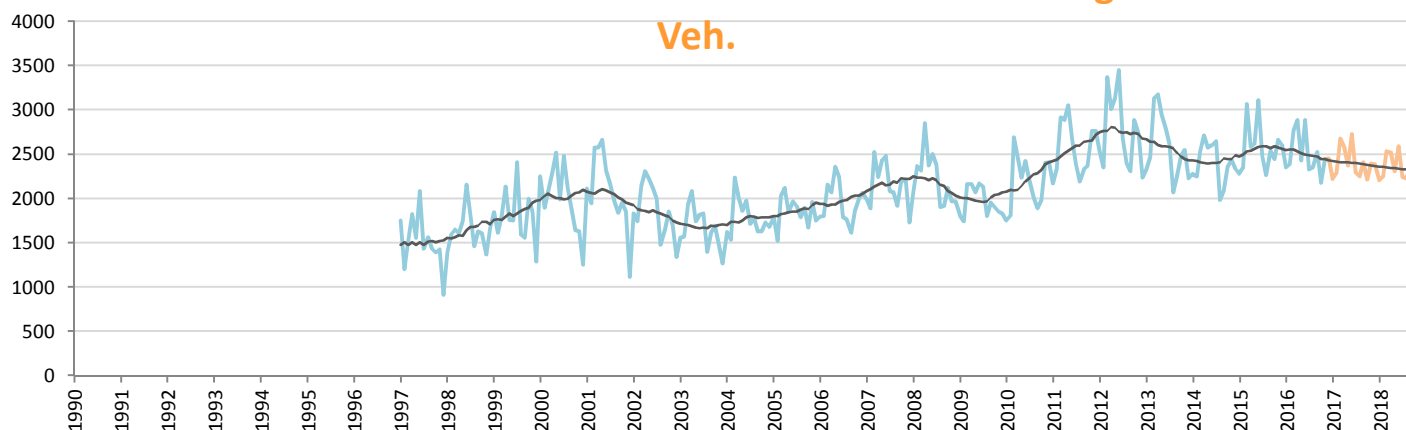


Data processing and forecast by CORAM

CORAM

	Jan.	Feb.	March	April	May	June	July	Aug.	Sept.	Oct.	Nov.	Dec.	YTD	FY
2015	18,400	22,388	31,487	28,982	27,422	33,119	30,228	23,431	24,137	25,236	26,312	32,642	291,142	323,784
2016	20,205	22,653	29,099	28,698	26,123	31,259	26,074	21,927	26,145	23,396	26,414	31,655	281,993	313,648
YTY (%)	9.8	1.2	-7.6	-1.0	-4.7	-5.6	-13.7	-6.4	8.3	-7.3	0.4	-3.0	-3.1	-3.1

Car Sales Forecast : SWITZERLAND November 2016 - Light Com. Veh.

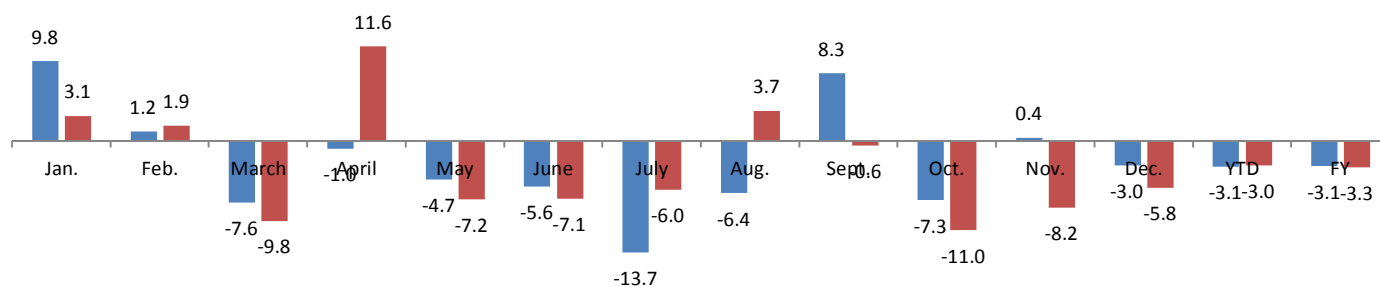


Data processing and forecast by CORAM

CORAM

	Jan.	Feb.	March	April	May	June	July	Aug.	Sept.	Oct.	Nov.	Dec.	YTD	FY
2015	2,282	2,344	3,071	2,584	2,617	3,111	2,481	2,266	2,543	2,449	2,662	2,608	28,410	31,018
2016	2,352	2,388	2,769	2,884	2,429	2,890	2,331	2,350	2,528	2,180	2,443	2,457	27,544	30,001
YTY (%)	3.1	1.9	-9.8	11.6	-7.2	-7.1	-6.0	3.7	-0.6	-11.0	-8.2	-5.8	-3.0	-3.3

YTY variations



Data source: ACEA. Data processing and forecast by CORAM.

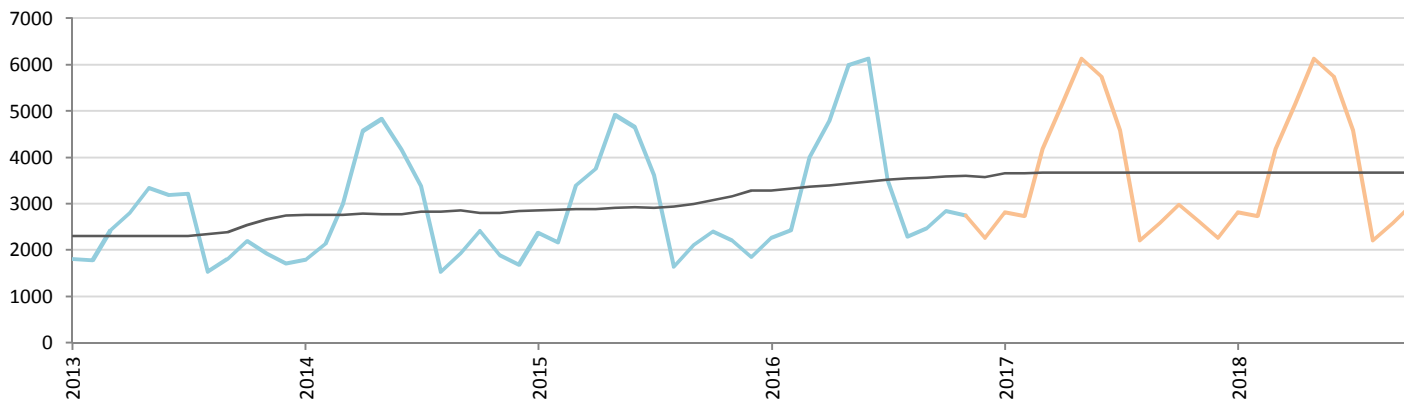
Car Sales Forecast : CROATIA November 2016

Total	Jan.	Feb.	March	April	May	June	July	Aug.	Sept.	Oct.	Nov.	Dec.	YTD	FY
2015	2,785	2,647	3,972	4,401	5,601	5,250	4,349	1,955	2,656	3,051	2,832	2,356	39,499	41,855
2016	2,797	3,007	4,649	5,467	6,815	6,967	4,425	2,945	3,088	3,499	3,333	2,879	46,992	49,871
YTY (%)	0.4	13.6	17.0	24.2	21.7	32.7	1.7	50.6	16.3	14.7	17.7	22.2	19.0	19.2

Comment: In November the car sales increase by 17,7%. 2016 forecast is an increase of 19,2%.

Trend FY 2017 : 51,300 2.9

Car Sales Forecast : CROATIA November 2016 - Car

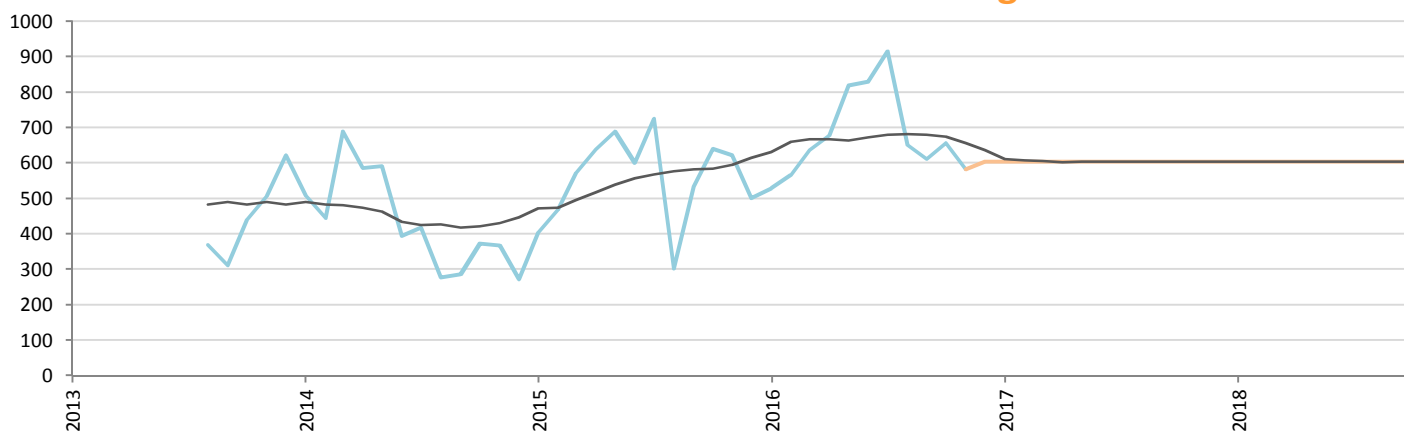


Data processing and forecast by CORAM

CORAM

	Jan.	Feb.	March	April	May	June	July	Aug.	Sept.	Oct.	Nov.	Dec.	YTD	FY
2015	2,382	2,179	3,400	3,763	4,912	4,649	3,624	1,653	2,123	2,411	2,209	1,855	33,305	35,160
2016	2,269	2,440	4,013	4,788	5,996	6,136	3,510	2,293	2,476	2,843	2,751	2,275	39,515	41,790
YTY (%)	-4.7	12.0	18.0	27.2	22.1	32.0	-3.1	38.7	16.6	17.9	24.5	22.6	18.6	18.9

Car Sales Forecast : CROATIA November 2016 - Light Com. Veh.

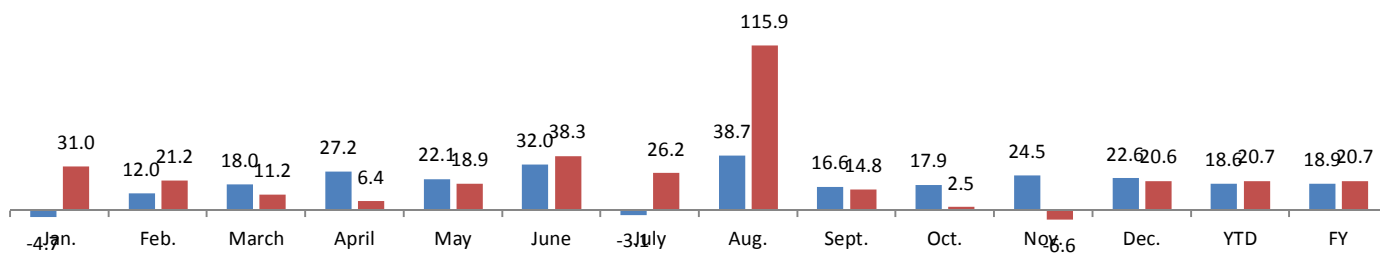


Data processing and forecast by CORAM

CORAM

	Jan.	Feb.	March	April	May	June	July	Aug.	Sept.	Oct.	Nov.	Dec.	YTD	FY
2015	403	468	572	638	689	601	725	302	533	640	623	501	6,194	6,695
2016	528	567	636	679	819	831	915	652	612	656	582	604	7,477	8,081
YTY (%)	31.0	21.2	11.2	6.4	18.9	38.3	26.2	115.9	14.8	2.5	-6.6	20.6	20.7	20.7

YTY variations



Data source: ACEA. Data processing and forecast by CORAM.

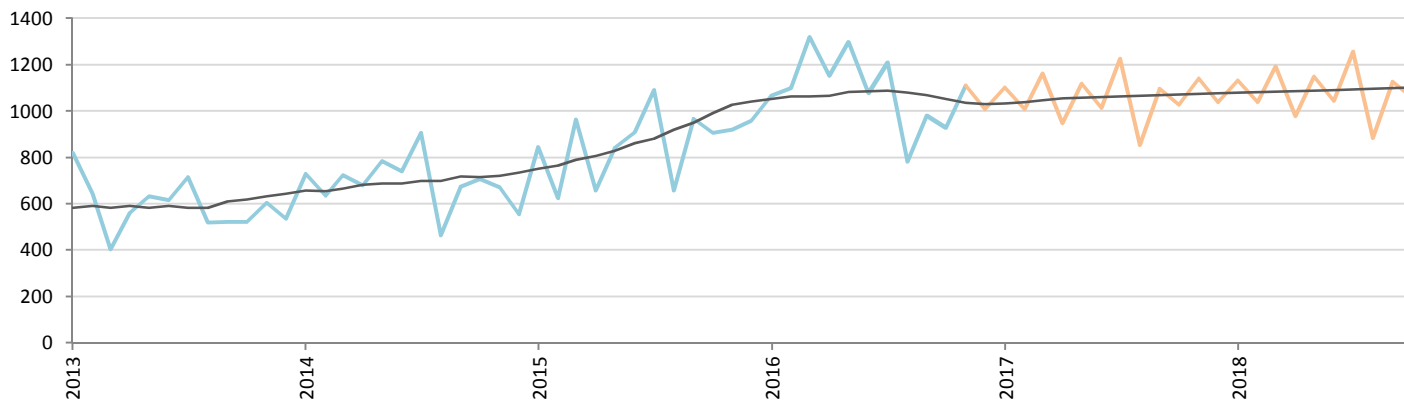
Car Sales Forecast : CYPRUS November 2016

Total	Jan.	Feb.	March	April	May	June	July	Aug.	Sept.	Oct.	Nov.	Dec.	YTD	FY
2015	905	714	1,057	753	987	1,044	1,257	711	1,177	1,049	1,050	1,083	10,704	11,787
2016	1,180	1,248	1,449	1,260	1,456	1,350	1,361	908	1,162	1,093	1,299	1,174	13,766	14,940
YTY (%)	30.4	74.8	37.1	67.3	47.5	29.3	8.3	27.7	-1.3	4.2	23.7	8.4	28.6	26.7

Comment: In November the car sales increase by 23,7%. 2016 forecast is an increase of 26,7%.

Trend FY 2017 : 14,900 -0.3

Car Sales Forecast : CYPRUS November 2016 - Car

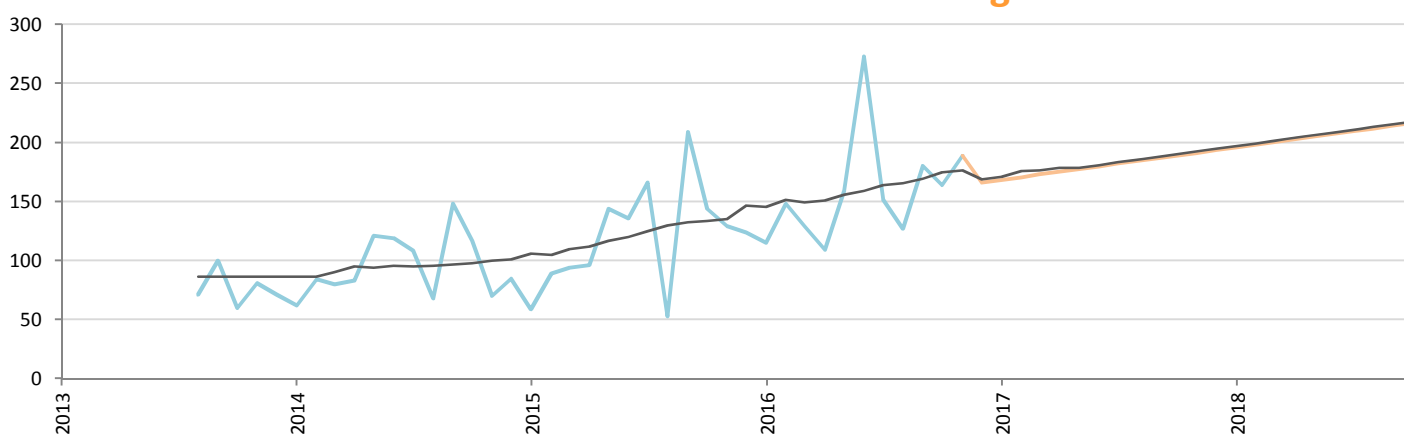


Data processing and forecast by CORAM

CORAM

	Jan.	Feb.	March	April	May	June	July	Aug.	Sept.	Oct.	Nov.	Dec.	YTD	FY
2015	846	625	963	657	843	908	1,091	658	968	905	921	959	9,385	10,344
2016	1,065	1,100	1,320	1,151	1,297	1,077	1,209	781	982	929	1,110	1,008	12,021	13,029
YTY (%)	25.9	76.0	37.1	75.2	53.9	18.6	10.8	18.7	1.4	2.7	20.5	5.1	28.1	26.0

Car Sales Forecast : CYPRUS November 2016 - Light Com. Veh.

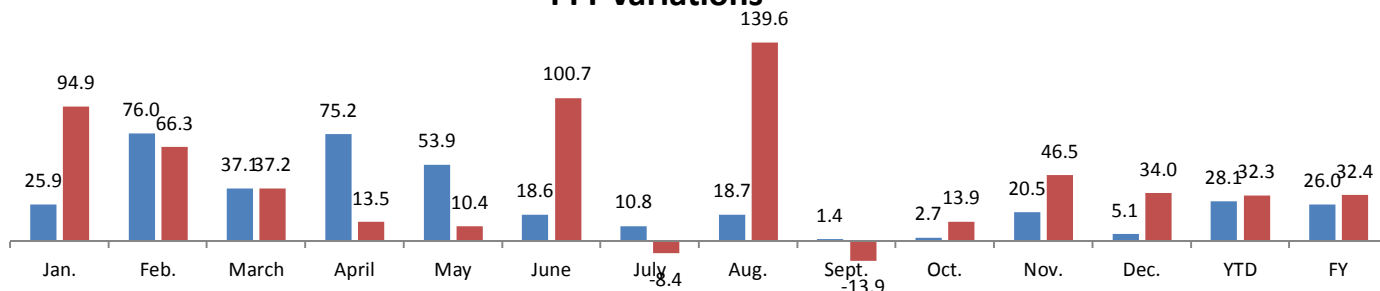


Data processing and forecast by CORAM

CORAM

	Jan.	Feb.	March	April	May	June	July	Aug.	Sept.	Oct.	Nov.	Dec.	YTD	FY
2015	59	89	94	96	144	136	166	53	209	144	129	124	1,319	1,443
2016	115	148	129	109	159	273	152	127	180	164	189	166	1,745	1,911
YTY (%)	94.9	66.3	37.2	13.5	10.4	100.7	-8.4	139.6	-13.9	13.9	46.5	34.0	32.3	32.4

YTY variations



Data source: ACEA. Data processing and forecast by CORAM.

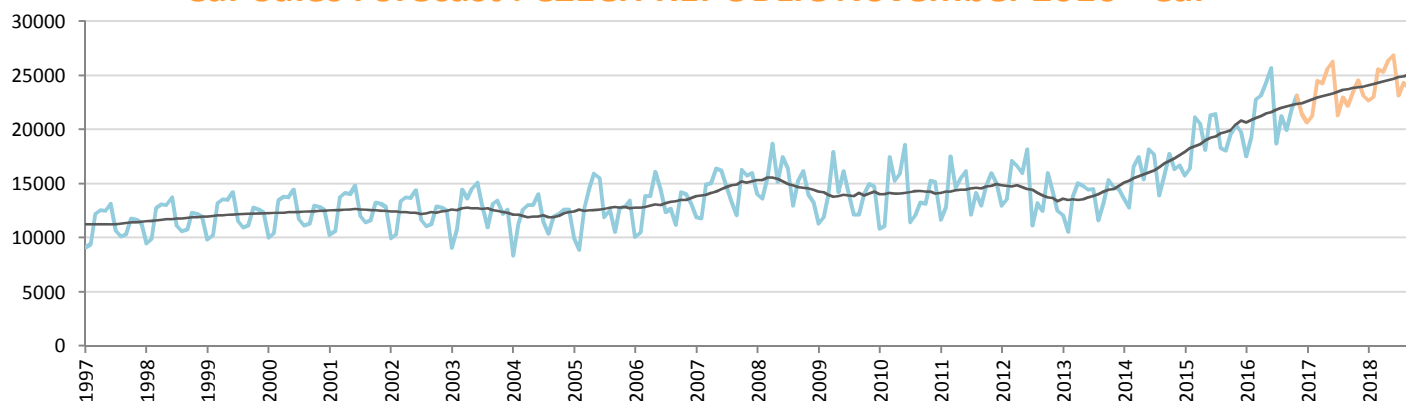
Car Sales Forecast : CZECH REPUBLIC November 2016

Total	Jan.	Feb.	March	April	May	June	July	Aug.	Sept.	Oct.	Nov.	Dec.	YTD	FY
2015	16,784	17,731	22,811	21,985	19,325	22,704	22,652	19,468	19,312	21,416	22,110	21,690	226,298	247,988
2016	18,696	20,680	24,390	24,681	26,092	27,595	20,085	23,100	21,580	23,585	24,719	23,248	255,203	278,451
YTY (%)	11.4	16.6	6.9	12.3	35.0	21.5	-11.3	18.7	11.7	10.1	11.8	7.2	12.8	12.3

Comment: In November the car sales increase by 11,8%. 2016 forecast is an increase of 12,3%.

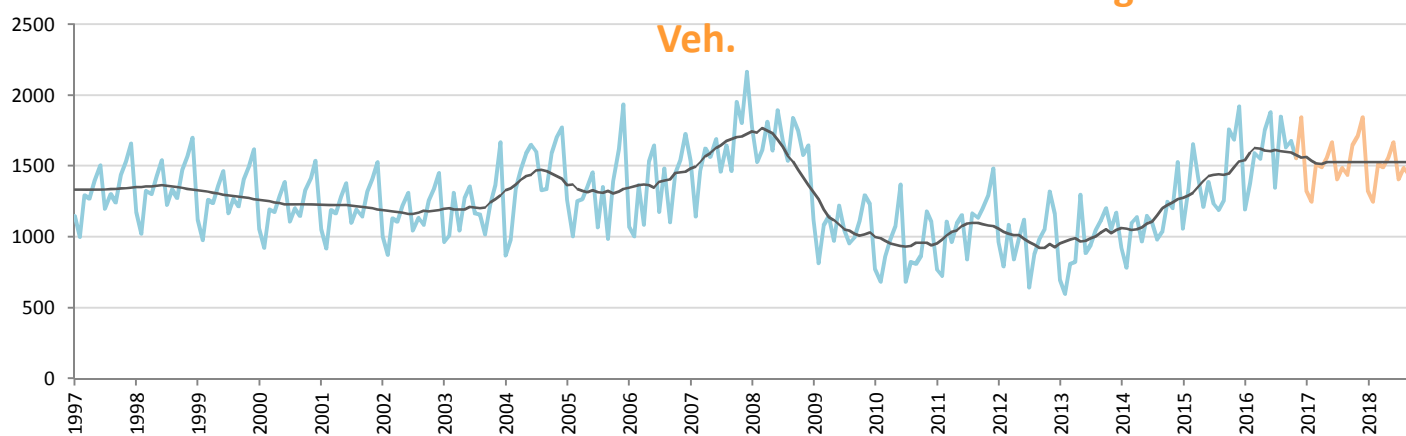
Trend FY 2017 : 299,000 7.4

Car Sales Forecast : CZECH REPUBLIC November 2016 - Car



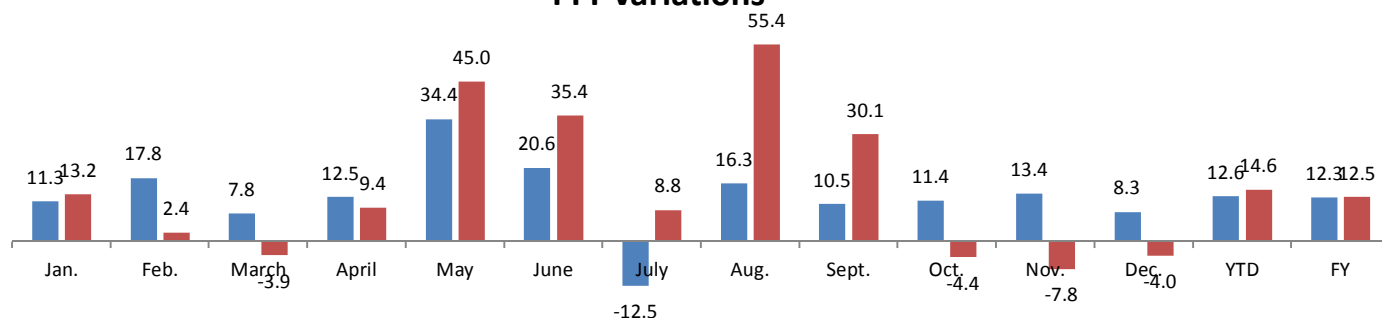
	Jan.	Feb.	March	April	May	June	July	Aug.	Sept.	Oct.	Nov.	Dec.	YTD	FY
2015	15,727	16,383	21,155	20,568	18,113	21,315	21,415	18,278	18,056	19,658	20,421	19,768	211,089	230,857
2016	17,500	19,299	22,799	23,131	24,335	25,714	18,739	21,251	19,946	21,905	23,161	21,403	237,780	259,183
YTY (%)	11.3	17.8	7.8	12.5	34.4	20.6	-12.5	16.3	10.5	11.4	13.4	8.3	12.6	12.3

Car Sales Forecast : CZECH REPUBLIC November 2016 - Light Com. Veh.



	Jan.	Feb.	March	April	May	June	July	Aug.	Sept.	Oct.	Nov.	Dec.	YTD	FY
2015	1,057	1,348	1,656	1,417	1,212	1,389	1,237	1,190	1,256	1,758	1,689	1,922	15,209	17,131
2016	1,196	1,381	1,591	1,550	1,757	1,881	1,346	1,849	1,634	1,680	1,558	1,845	17,423	19,268
YTY (%)	13.2	2.4	-3.9	9.4	45.0	35.4	8.8	55.4	30.1	-4.4	-7.8	-4.0	14.6	12.5

YTY variations



Data source: ACEA. Data processing and forecast by CORAM.

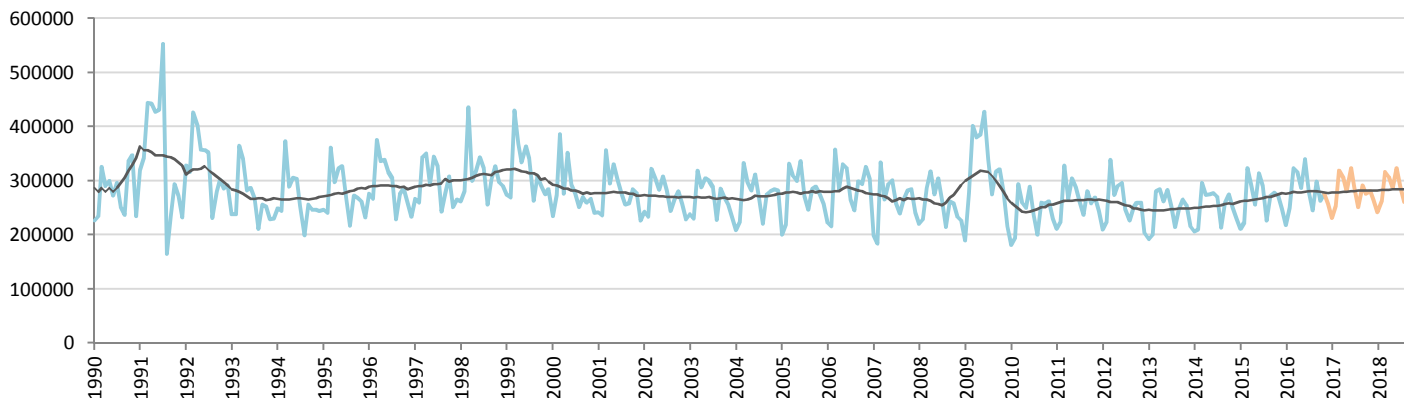
Car Sales Forecast : GERMANY November 2016

Total	Jan.	Feb.	March	April	May	June	July	Aug.	Sept.	Oct.	Nov.	Dec.	YTD	FY
2015	226,514	239,069	345,123	311,597	274,167	336,292	310,285	241,316	291,675	301,513	296,611	269,782	3,174,162	3,443,944
2016	235,334	268,475	345,649	337,952	307,441	365,248	299,059	268,142	318,278	282,814	301,308	279,947	3,329,700	3,609,647
YTY (%)	3.9	12.3	0.2	8.5	12.1	8.6	-3.6	11.1	9.1	-6.2	1.6	3.8	4.9	4.8

Comment: In November the car sales increase by 1,6%. 2016 forecast is an increase of 4,8%.

Trend FY 2017 : 3,620,000 0.3

Car Sales Forecast : GERMANY November 2016 - Car

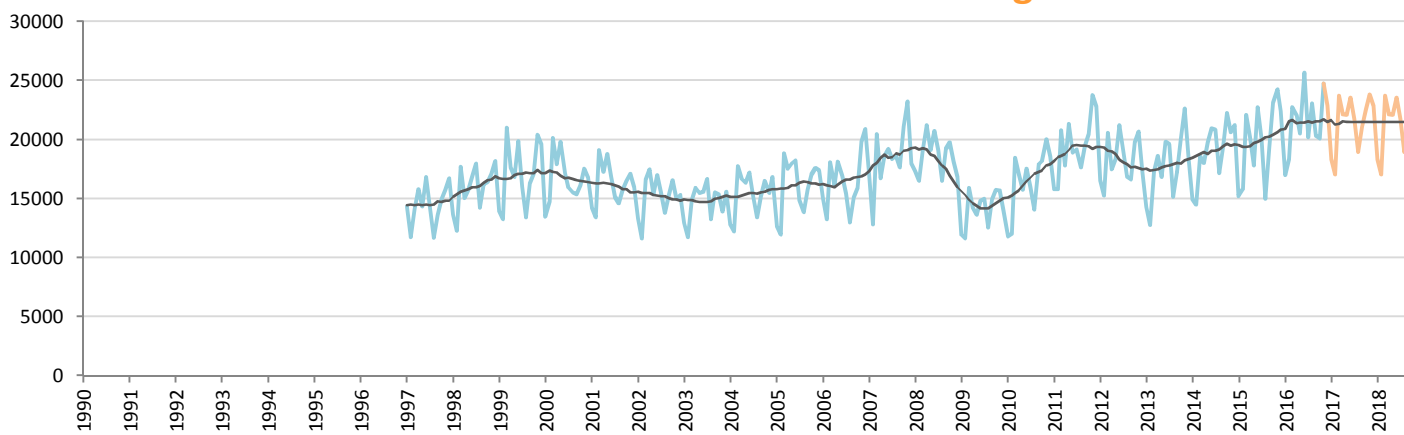


Data processing and forecast by CORAM

CORAM

	Jan.	Feb.	March	April	May	June	July	Aug.	Sept.	Oct.	Nov.	Dec.	YTD	FY
2015	211,337	223,254	323,039	291,395	256,385	313,539	290,196	226,314	272,479	278,372	272,377	247,355	2,958,687	3,206,042
2016	218,365	250,146	322,913	315,921	286,931	339,563	278,866	245,076	298,002	262,724	276,567	257,071	3,095,074	3,352,145
YTY (%)	3.3	12.0	0.0	8.4	11.9	8.3	-3.9	8.3	9.4	-5.6	1.5	3.9	4.6	4.6

Car Sales Forecast : GERMANY November 2016 - Light Com. Veh.

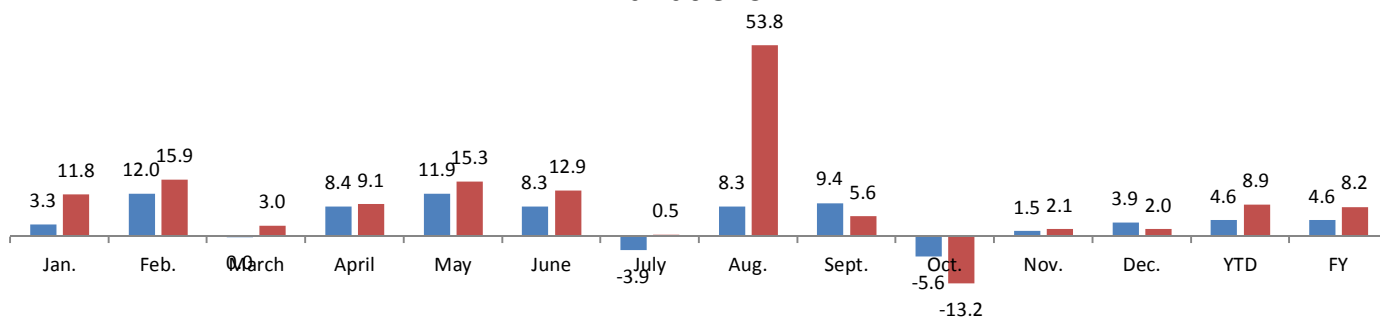


Data processing and forecast by CORAM

CORAM

	Jan.	Feb.	March	April	May	June	July	Aug.	Sept.	Oct.	Nov.	Dec.	YTD	FY
2015	15,177	15,815	22,084	20,202	17,782	22,753	20,089	15,002	19,196	23,141	24,234	22,427	215,475	237,902
2016	16,969	18,329	22,736	22,031	20,510	25,685	20,193	23,066	20,276	20,090	24,741	22,876	234,626	257,502
YTY (%)	11.8	15.9	3.0	9.1	15.3	12.9	0.5	53.8	5.6	-13.2	2.1	2.0	8.9	8.2

YTY variations



Data source: KBA. Data processing and forecast by CORAM.

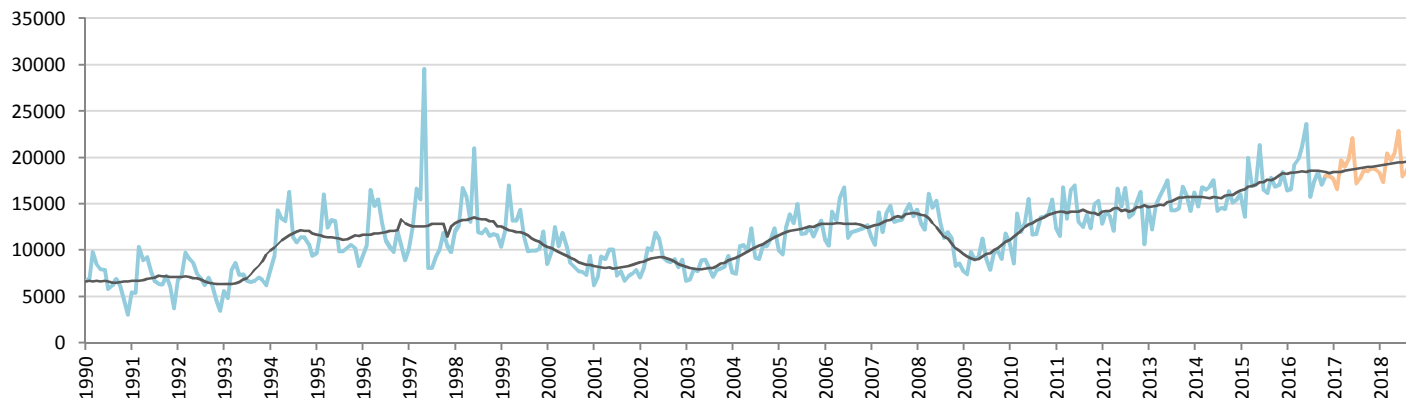
Car Sales Forecast : DENMARK November 2016

Total	Jan.	Feb.	March	April	May	June	July	Aug.	Sept.	Oct.	Nov.	Dec.	YTD	FY
2015	18,323	15,780	23,109	19,634	19,663	24,553	18,460	18,804	20,549	19,676	20,021	21,778	218,572	240,350
2016	19,276	19,502	22,319	23,079	24,371	27,443	17,973	21,217	21,180	19,693	20,941	21,314	236,994	258,308
YTY (%)	5.2	23.6	-3.4	17.5	23.9	11.8	-2.6	12.8	3.1	0.1	4.6	-2.1	8.4	7.5

Comment: In November the car sales increase by 4,6%. 2016 forecast is an increase of 7,5%.

Trend FY 2017 : 260,000 0.7

Car Sales Forecast : DENMARK November 2016 - Car

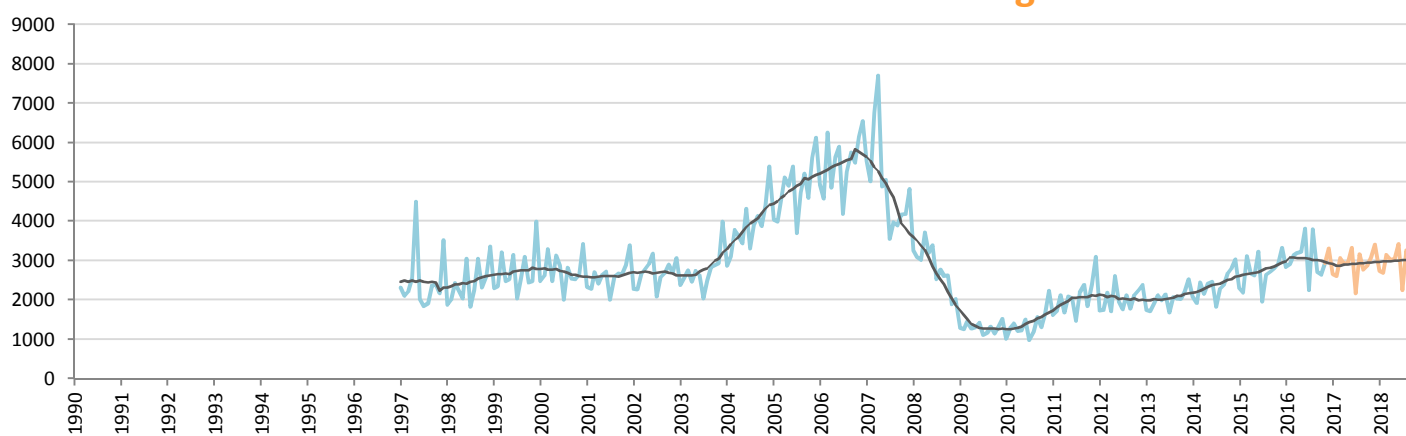


Data processing and forecast by CORAM

CORAM

	Jan.	Feb.	March	April	May	June	July	Aug.	Sept.	Oct.	Nov.	Dec.	YTD	FY
2015	16,025	13,595	19,991	16,966	17,037	21,334	16,507	16,156	17,829	16,872	17,098	18,461	189,410	207,871
2016	16,436	16,595	19,190	19,886	21,141	23,633	15,726	17,414	18,477	17,057	18,007	17,999	203,562	221,561
YTY (%)	2.6	22.1	-4.0	17.2	24.1	10.8	-4.7	7.8	3.6	1.1	5.3	-2.5	7.5	6.6

Car Sales Forecast : DENMARK November 2016 - Light Com. Veh.

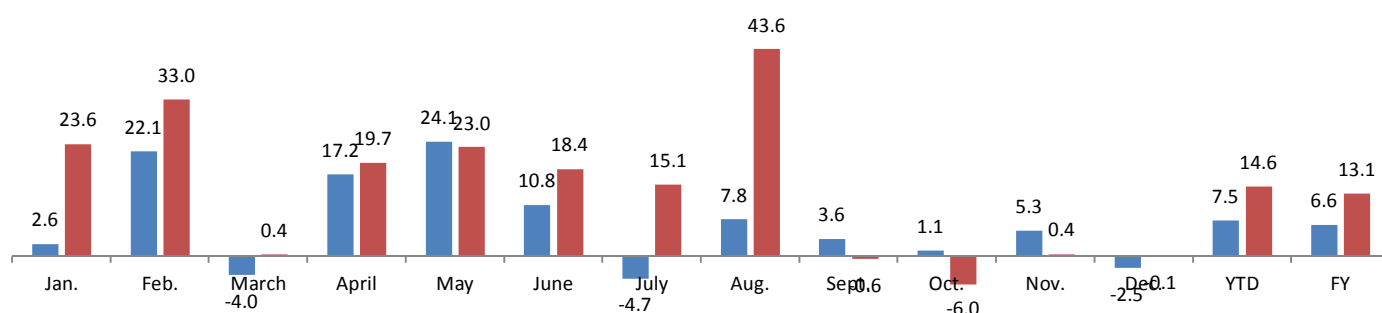


Data processing and forecast by CORAM

CORAM

	Jan.	Feb.	March	April	May	June	July	Aug.	Sept.	Oct.	Nov.	Dec.	YTD	FY
2015	2,298	2,185	3,118	2,668	2,626	3,219	1,953	2,648	2,720	2,804	2,923	3,317	29,162	32,479
2016	2,840	2,907	3,129	3,193	3,230	3,810	2,247	3,803	2,703	2,636	2,934	3,315	33,432	36,747
YTY (%)	23.6	33.0	0.4	19.7	23.0	18.4	15.1	43.6	-0.6	-6.0	0.4	-0.1	14.6	13.1

YTY variations



Data source: ACEA. Data processing and forecast by CORAM.

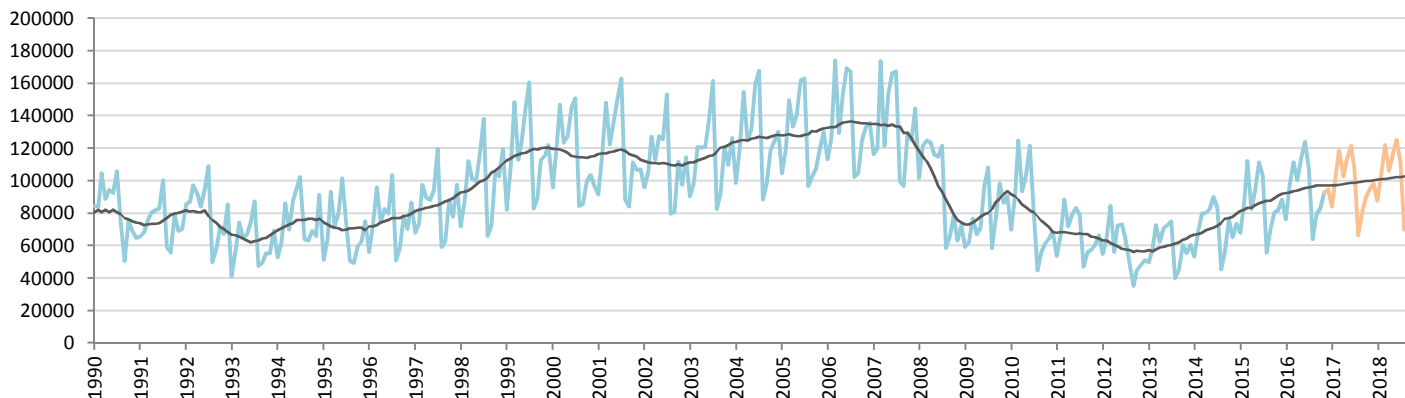
Car Sales Forecast : SPAIN November 2016

Total	Jan.	Feb.	March	April	May	June	July	Aug.	Sept.	Oct.	Nov.	Dec.	YTD	FY
2015	77,144	97,609	128,095	95,649	107,177	126,271	117,408	64,818	81,878	94,553	95,446	103,081	1,086,048	1,189,129
2016	86,965	110,370	127,104	115,537	129,351	141,313	122,589	74,638	93,120	96,951	108,084	110,671	1,206,022	1,316,693
YTY (%)	12.7	13.1	-0.8	20.8	20.7	11.9	4.4	15.2	13.7	2.5	13.2	7.4	11.0	10.7

Comment: In November the car sales increase by 13,2%. 2016 forecast is an increase of 10,7%.

Trend FY 2017 : 1,360,000 3.3

Car Sales Forecast : SPAIN November 2016 - Car

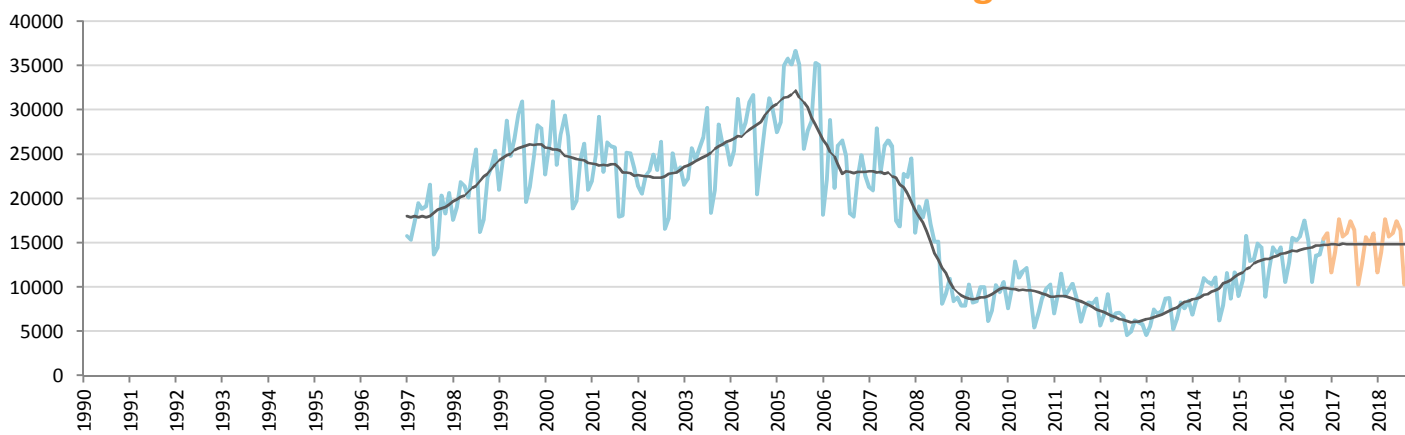


Data processing and forecast by CORAM

CORAM

	Jan.	Feb.	March	April	May	June	July	Aug.	Sept.	Oct.	Nov.	Dec.	YTD	FY
2015	68,119	86,719	112,304	82,716	94,031	111,333	102,932	55,918	69,826	80,055	81,650	88,609	945,603	1,034,212
2016	76,395	97,650	111,512	100,281	113,671	123,790	107,306	64,089	79,591	83,248	92,653	94,625	1,050,186	1,144,811
YTY (%)	12.1	12.6	-0.7	21.2	20.9	11.2	4.2	14.6	14.0	4.0	13.5	6.8	11.1	10.7

Car Sales Forecast : SPAIN November 2016 - Light Com. Veh.

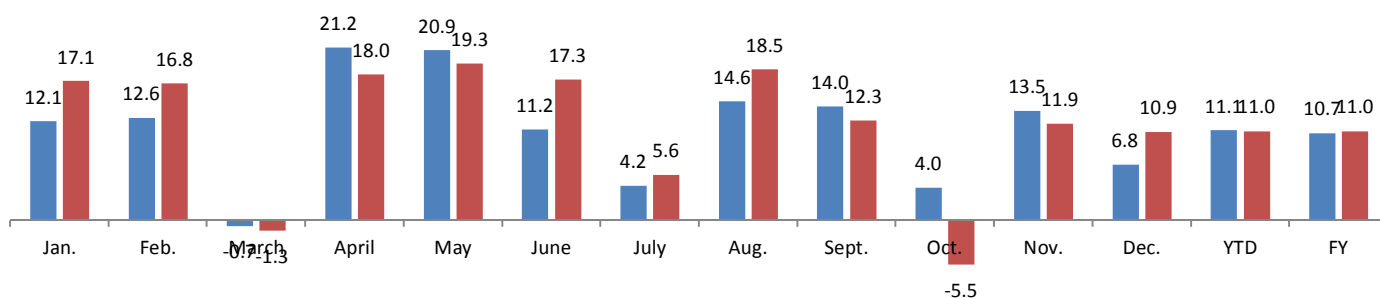


Data processing and forecast by CORAM

CORAM

	Jan.	Feb.	March	April	May	June	July	Aug.	Sept.	Oct.	Nov.	Dec.	YTD	FY
2015	9,025	10,890	15,791	12,933	13,146	14,938	14,476	8,900	12,052	14,498	13,796	14,472	140,445	154,917
2016	10,570	12,720	15,592	15,256	15,680	17,523	15,283	10,549	13,529	13,703	15,431	16,045	155,836	171,881
YTY (%)	17.1	16.8	-1.3	18.0	19.3	17.3	5.6	18.5	12.3	-5.5	11.9	10.9	11.0	11.0

YTY variations



Data source: ANFAC. Data processing and forecast by CORAM.

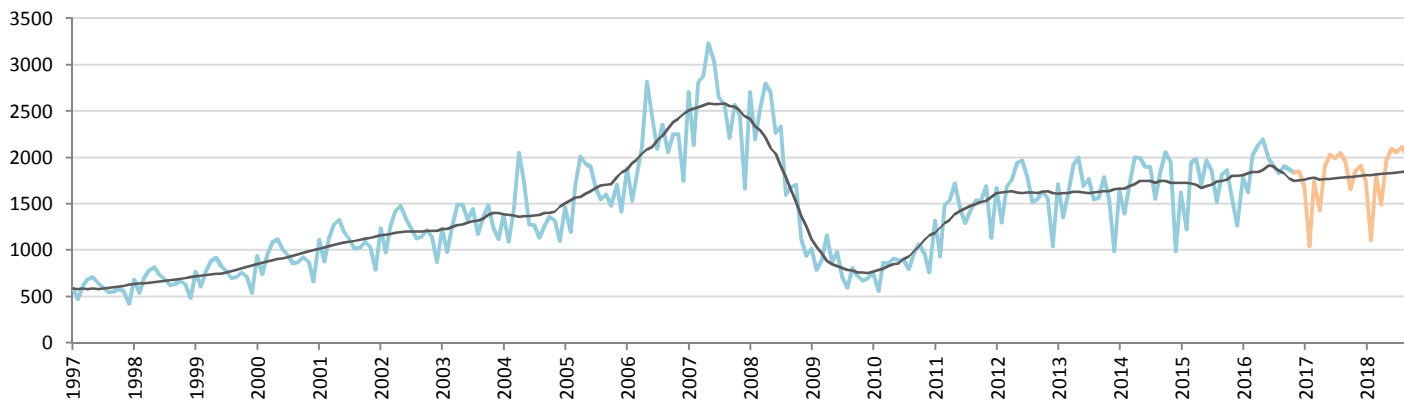
Car Sales Forecast : ESTONIA November 2016

Total	Jan.	Feb.	March	April	May	June	July	Aug.	Sept.	Oct.	Nov.	Dec.	YTD	FY
2015	1,984	1,460	2,309	2,306	1,996	2,234	2,163	1,787	2,181	2,178	1,840	1,490	22,438	23,928
2016	2,120	1,886	2,380	2,484	2,619	2,309	2,215	2,212	2,224	2,185	2,154	2,089	24,788	26,877
YTY (%)	6.9	29.2	3.1	7.7	31.2	3.4	2.4	23.8	2.0	0.3	17.1	40.2	10.5	12.3

Comment: In November the car sales increase by 17,1%. 2016 forecast is an increase of 12,3%.

Trend FY 2017 : 24,300 -9.6

Car Sales Forecast : ESTONIA November 2016 - Car

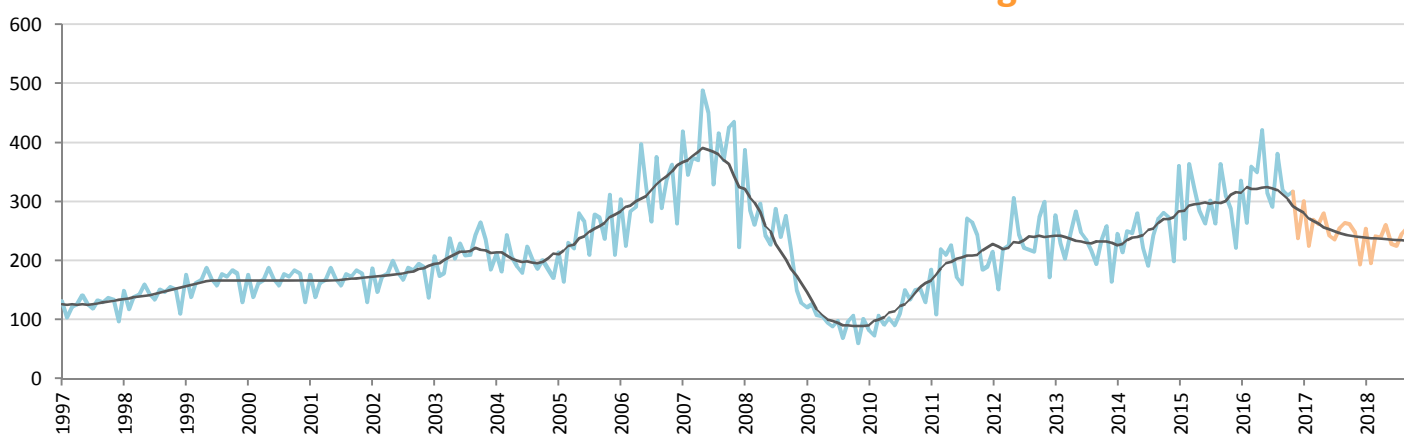


Data processing and forecast by CORAM

CORAM

	Jan.	Feb.	March	April	May	June	July	Aug.	Sept.	Oct.	Nov.	Dec.	YTD	FY
2015	1,624	1,223	1,945	1,984	1,712	1,971	1,861	1,524	1,817	1,867	1,552	1,268	19,080	20,348
2016	1,785	1,622	2,021	2,134	2,198	1,994	1,924	1,831	1,905	1,874	1,837	1,850	21,125	22,975
YTY (%)	9.9	32.6	3.9	7.6	28.4	1.2	3.4	20.1	4.8	0.4	18.4	45.9	10.7	12.9

Car Sales Forecast : ESTONIA November 2016 - Light Com. Veh.

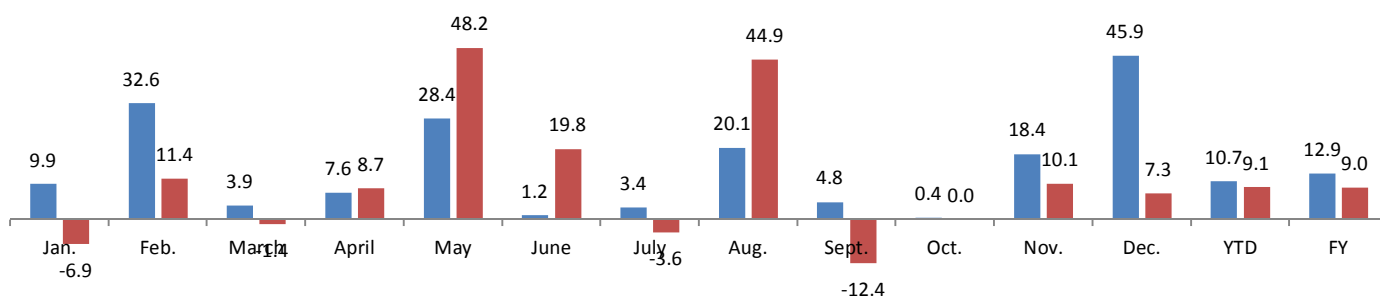


Data processing and forecast by CORAM

CORAM

	Jan.	Feb.	March	April	May	June	July	Aug.	Sept.	Oct.	Nov.	Dec.	YTD	FY
2015	360	237	364	322	284	263	302	263	364	311	288	222	3,358	3,580
2016	335	264	359	350	421	315	291	381	319	311	317	238	3,663	3,901
YTY (%)	-6.9	11.4	-1.4	8.7	48.2	19.8	-3.6	44.9	-12.4	0.4	10.1	7.3	9.1	9.0

YTY variations



Data source: ACEA. Data processing and forecast by CORAM.

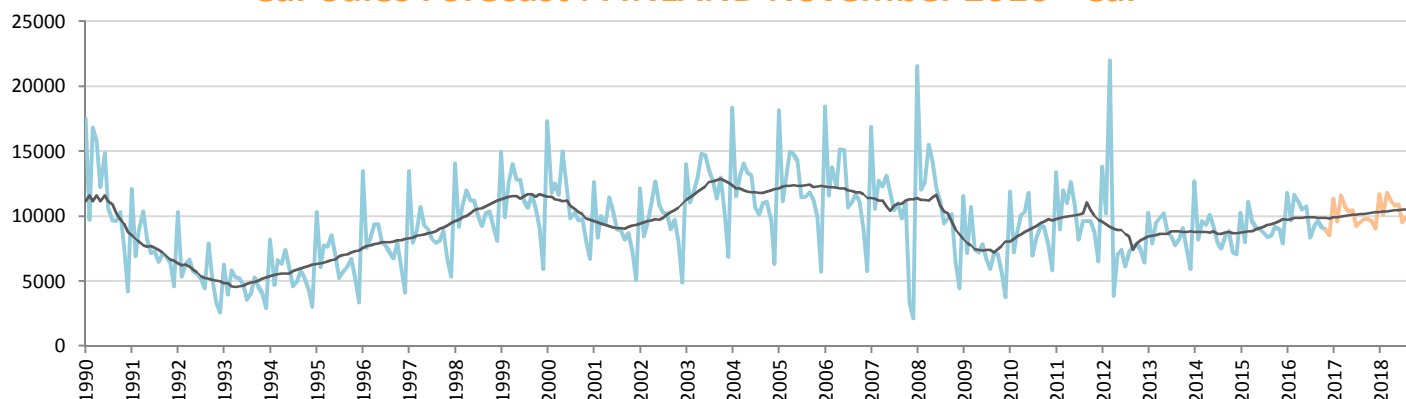
Car Sales Forecast : FINLAND November 2016

Total	Jan.	Feb.	March	April	May	June	July	Aug.	Sept.	Oct.	Nov.	Dec.	YTD	FY
2015	11,227	8,904	12,170	10,598	10,045	9,977	9,480	9,356	9,470	10,126	9,955	8,942	111,308	120,250
2016	12,937	10,640	12,734	12,273	11,589	11,945	9,118	10,507	10,813	10,203	10,189	9,655	122,948	132,603
YTY (%)	15.2	19.5	4.6	15.8	15.4	19.7	-3.8	12.3	14.2	0.8	2.4	8.0	10.5	10.3

Comment: In November the car sales increase by 2,4%. 2016 forecast is an increase of 10,3%.

Trend FY 2017 : 135,000 1.8

Car Sales Forecast : FINLAND November 2016 - Car

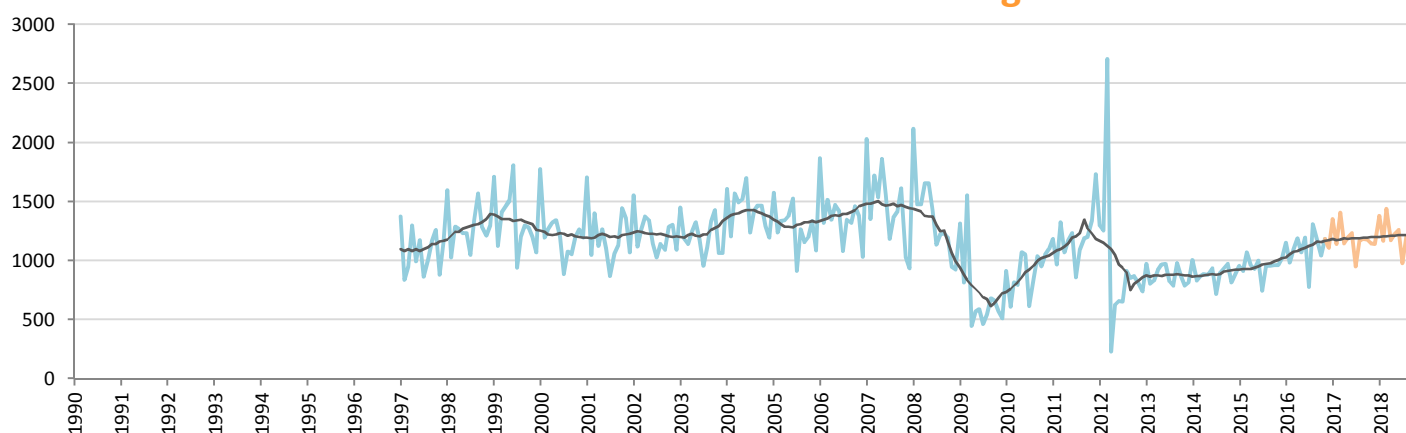


Data processing and forecast by CORAM

CORAM

	Jan.	Feb.	March	April	May	June	July	Aug.	Sept.	Oct.	Nov.	Dec.	YTD	FY
2015	10,268	7,990	11,098	9,637	9,117	8,980	8,736	8,402	8,513	9,166	8,992	7,920	100,899	108,819
2016	11,788	9,656	11,637	11,085	10,518	10,750	8,340	9,196	9,644	9,162	9,006	8,545	110,782	119,327
YTY (%)	14.8	20.9	4.9	15.0	15.4	19.7	-4.5	9.5	13.3	0.0	0.2	7.9	9.8	9.7

Car Sales Forecast : FINLAND November 2016 - Light Com. Veh.

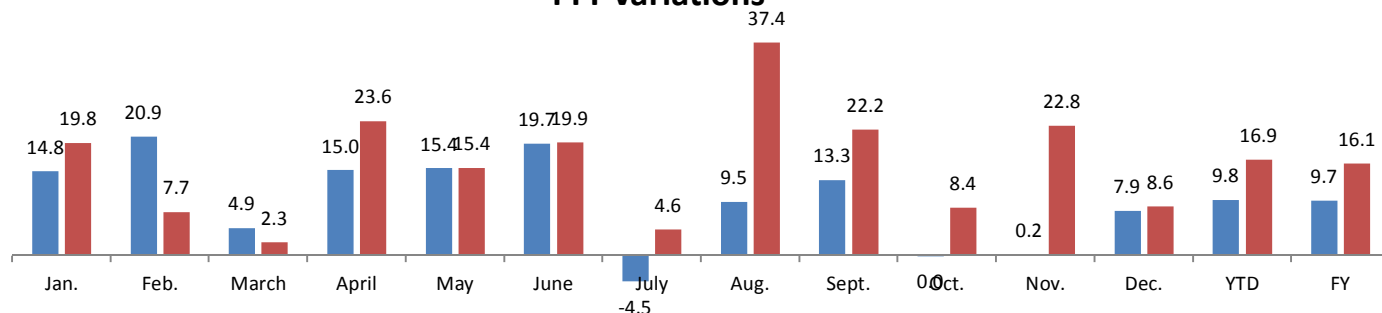


Data processing and forecast by CORAM

CORAM

	Jan.	Feb.	March	April	May	June	July	Aug.	Sept.	Oct.	Nov.	Dec.	YTD	FY
2015	959	914	1,072	961	928	997	744	954	957	960	963	1,022	10,409	11,431
2016	1,149	984	1,097	1,188	1,071	1,195	778	1,311	1,169	1,041	1,183	1,110	12,166	13,276
YTY (%)	19.8	7.7	2.3	23.6	15.4	19.9	4.6	37.4	22.2	8.4	22.8	8.6	16.9	16.1

YTY variations



Data source: ACEA. Data processing and forecast by CORAM.

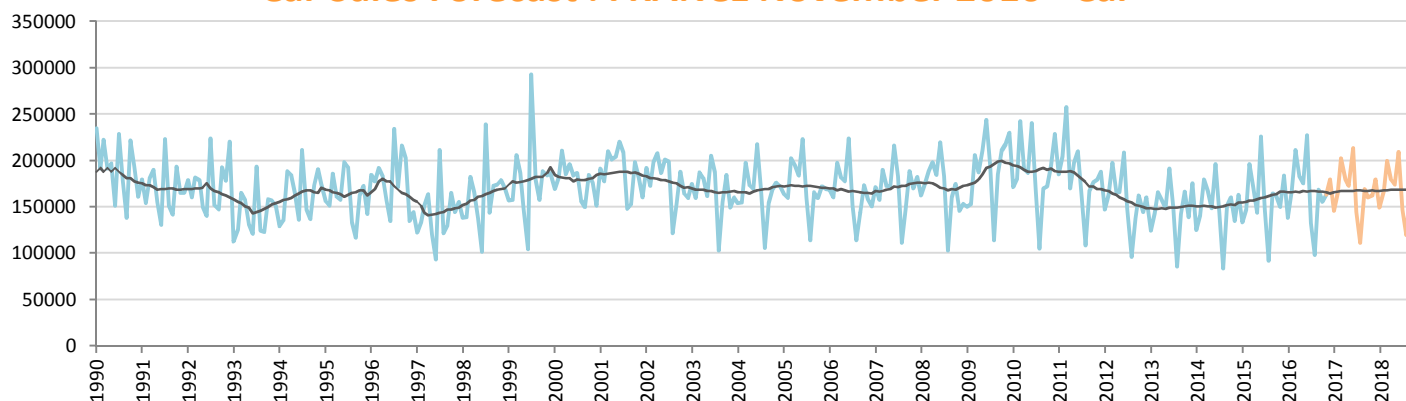
Car Sales Forecast : FRANCE November 2016

Total	Jan.	Feb.	March	April	May	June	July	Aug.	Sept.	Oct.	Nov.	Dec.	YTD	FY
2015	158,076	176,884	233,309	203,851	170,474	266,350	174,682	109,108	200,846	196,825	181,070	223,489	2,071,475	2,294,964
2016	166,362	199,824	249,835	218,900	209,965	272,678	161,248	118,236	204,146	188,230	198,853	217,903	2,188,277	2,406,180
YTY (%)	5.2	13.0	7.1	7.4	23.2	2.4	-7.7	8.4	1.6	-4.4	9.8	-2.5	5.6	4.8

Comment: In November the car sales increase by 9,8%. 2016 forecast is an increase of 4,8%.

Trend FY 2017 : 2,410,000 0.2

Car Sales Forecast : FRANCE November 2016 - Car

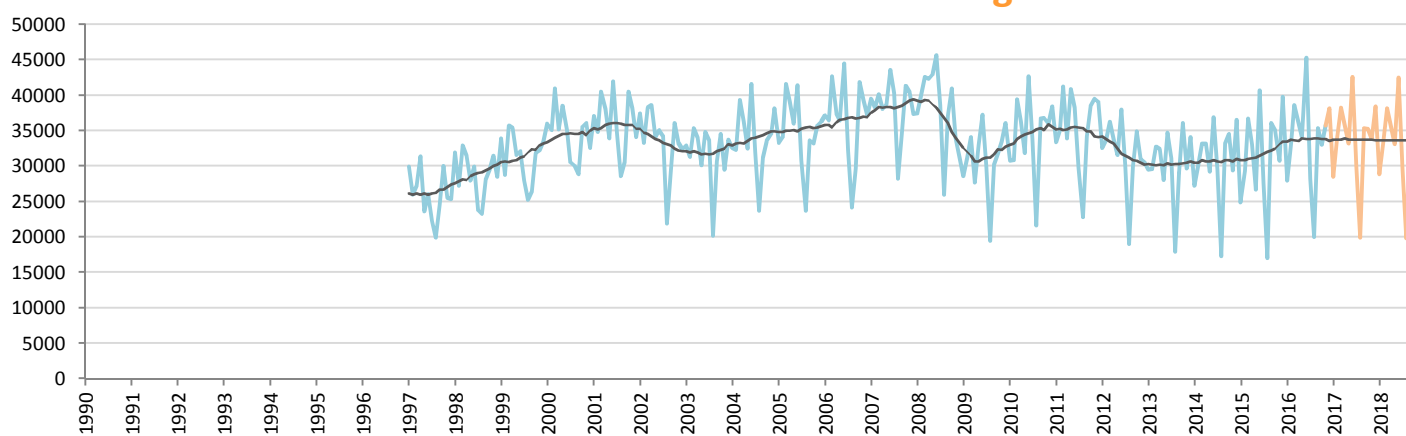


Data processing and forecast by CORAM

CORAM

	Jan.	Feb.	March	April	May	June	July	Aug.	Sept.	Oct.	Nov.	Dec.	YTD	FY
2015	133,170	147,584	196,565	170,765	143,771	225,638	147,125	92,048	164,769	161,737	150,334	183,720	1,733,506	1,917,226
2016	138,400	166,728	211,254	182,863	175,831	227,353	132,990	98,211	168,820	155,194	163,161	179,705	1,820,805	2,000,510
YTY (%)	3.9	13.0	7.5	7.1	22.3	0.8	-9.6	6.7	2.5	-4.0	8.5	-2.2	5.0	4.3

Car Sales Forecast : FRANCE November 2016 - Light Com. Veh.

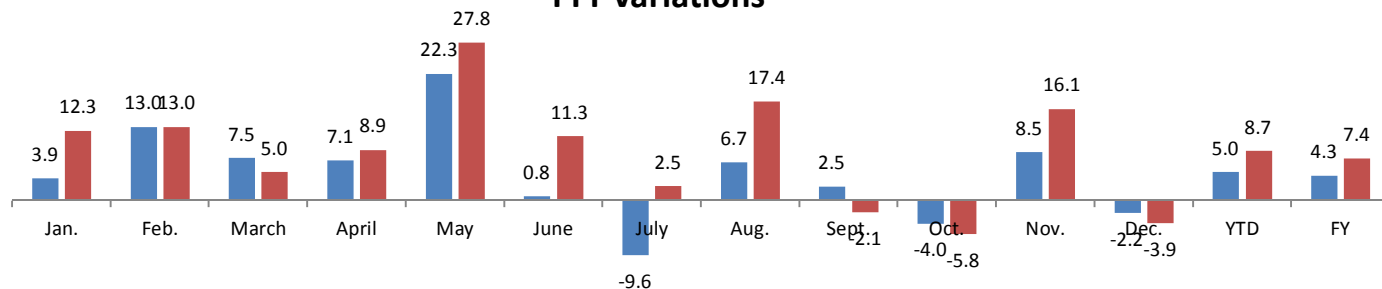


Data processing and forecast by CORAM

CORAM

	Jan.	Feb.	March	April	May	June	July	Aug.	Sept.	Oct.	Nov.	Dec.	YTD	FY
2015	24,906	29,300	36,744	33,086	26,703	40,712	27,557	17,060	36,077	35,088	30,736	39,769	337,969	377,738
2016	27,962	33,096	38,581	36,037	34,134	45,325	28,258	20,025	35,326	33,036	35,692	38,198	367,472	405,670
YTY (%)	12.3	13.0	5.0	8.9	27.8	11.3	2.5	17.4	-2.1	-5.8	16.1	-3.9	8.7	7.4

YTY variations



Data source: CCFA. Data processing and forecast by CORAM.

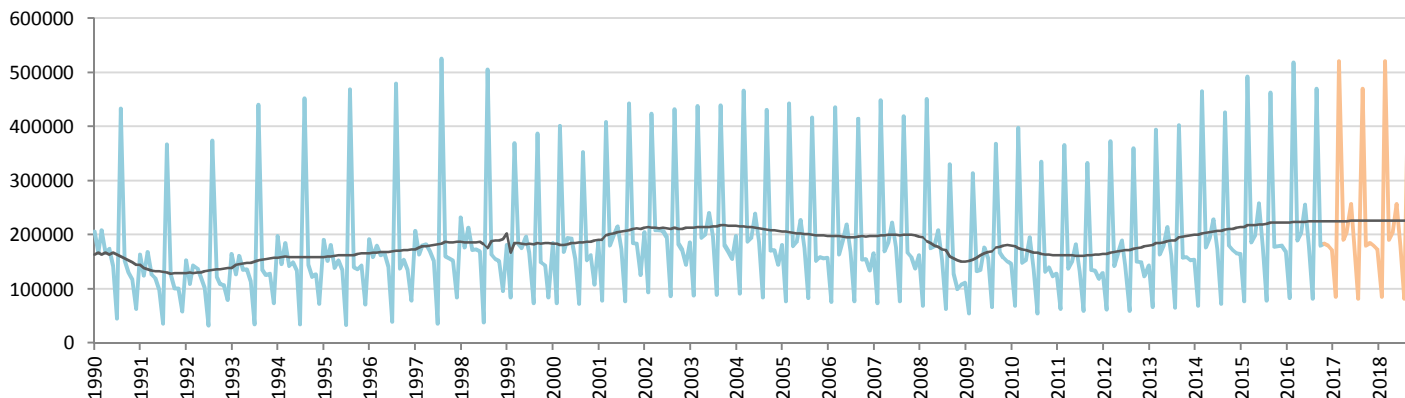
Car Sales Forecast : UK November 2016

Total	Jan.	Feb.	March	April	May	June	July	Aug.	Sept.	Oct.	Nov.	Dec.	YTD	FY
2015	186,905	90,790	554,668	210,705	226,666	293,559	202,966	93,527	521,261	205,872	207,927	210,487	2,794,846	3,005,333
2016	190,780	97,286	582,620	217,385	232,065	292,466	203,029	97,025	529,553	207,118	213,885	211,132	2,863,212	3,074,344
YTY (%)	2.1	7.2	5.0	3.2	2.4	-0.4	0.0	3.7	1.6	0.6	2.9	0.3	2.4	2.3

Comment: In November the car sales increase by 2,9%. 2016 forecast is an increase of 2,3%.

Trend FY 2017 : 3,090,000 0.5

Car Sales Forecast : UK November 2016 - Car

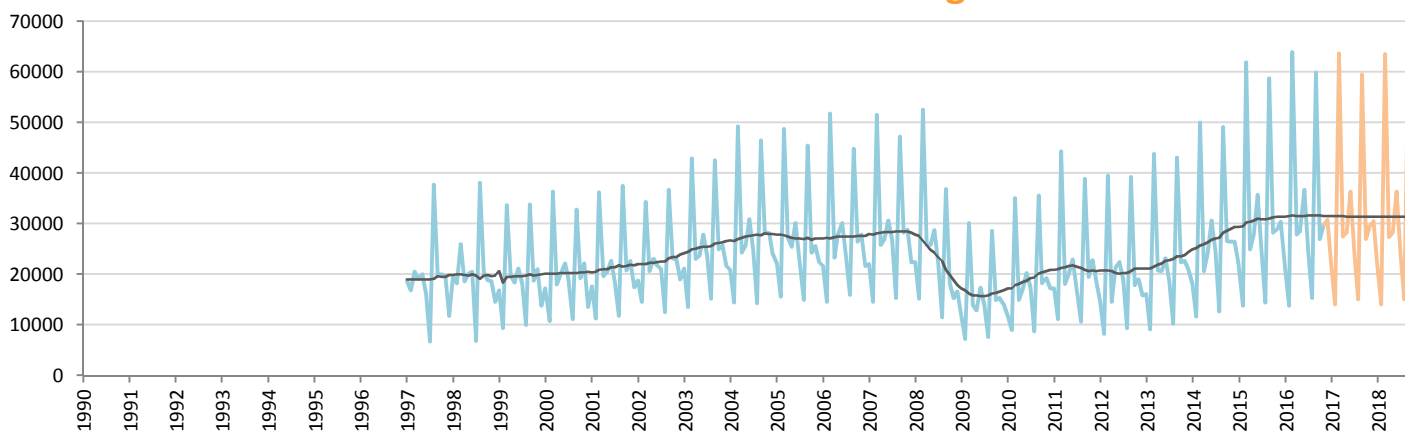


Data processing and forecast by CORAM

CORAM

	Jan.	Feb.	March	April	May	June	July	Aug.	Sept.	Oct.	Nov.	Dec.	YTD	FY
2015	164,856	76,958	492,774	185,778	198,706	257,817	178,420	79,060	462,517	177,664	178,876	180,077	2,453,426	2,633,503
2016	169,678	83,395	518,707	189,505	203,585	255,766	178,523	81,640	469,696	180,168	184,101	180,352	2,514,764	2,695,116
YTY (%)	2.9	8.4	5.3	2.0	2.5	-0.8	0.1	3.3	1.6	1.4	2.9	0.2	2.5	2.3

Car Sales Forecast : UK November 2016 - Light Com. Veh.

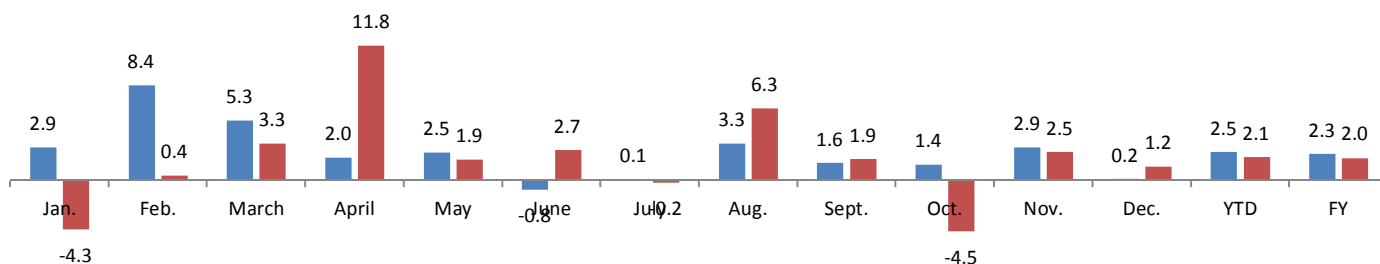


Data processing and forecast by CORAM

CORAM

	Jan.	Feb.	March	April	May	June	July	Aug.	Sept.	Oct.	Nov.	Dec.	YTD	FY
2015	22,049	13,832	61,894	24,927	27,960	35,742	24,546	14,467	58,744	28,208	29,051	30,410	341,420	371,830
2016	21,102	13,891	63,913	27,880	28,480	36,700	24,506	15,385	59,857	26,950	29,784	30,780	348,448	379,228
YTY (%)	-4.3	0.4	3.3	11.8	1.9	2.7	-0.2	6.3	1.9	-4.5	2.5	1.2	2.1	2.0

YTY variations



Data source: SMMT. Data processing and forecast by CORAM.

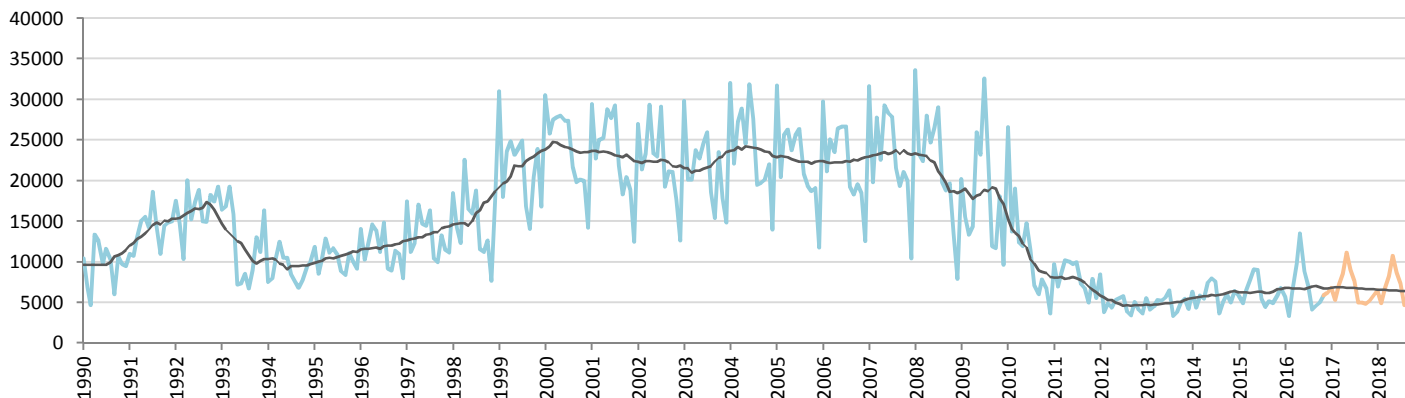
Car Sales Forecast : GREECE November 2016

Total	Jan.	Feb.	March	April	May	June	July	Aug.	Sept.	Oct.	Nov.	Dec.	YTD	FY
2015	6,509	5,626	7,048	8,369	9,488	9,377	5,723	4,749	5,489	5,378	6,313	7,390	74,069	81,459
2016	6,217	3,568	6,655	10,270	14,057	9,519	7,549	4,603	4,989	5,473	6,430	6,780	79,330	86,110
YTY (%)	-4.5	-36.6	-5.6	22.7	48.2	1.5	31.9	-3.1	-9.1	1.8	1.9	-8.3	7.1	5.7

Comment: In November the car sales increase by 1,9%. 2016 forecast is an increase of 5,7%.

Trend FY 2017 : 87,800 2.0

Car Sales Forecast : GREECE November 2016 - Car

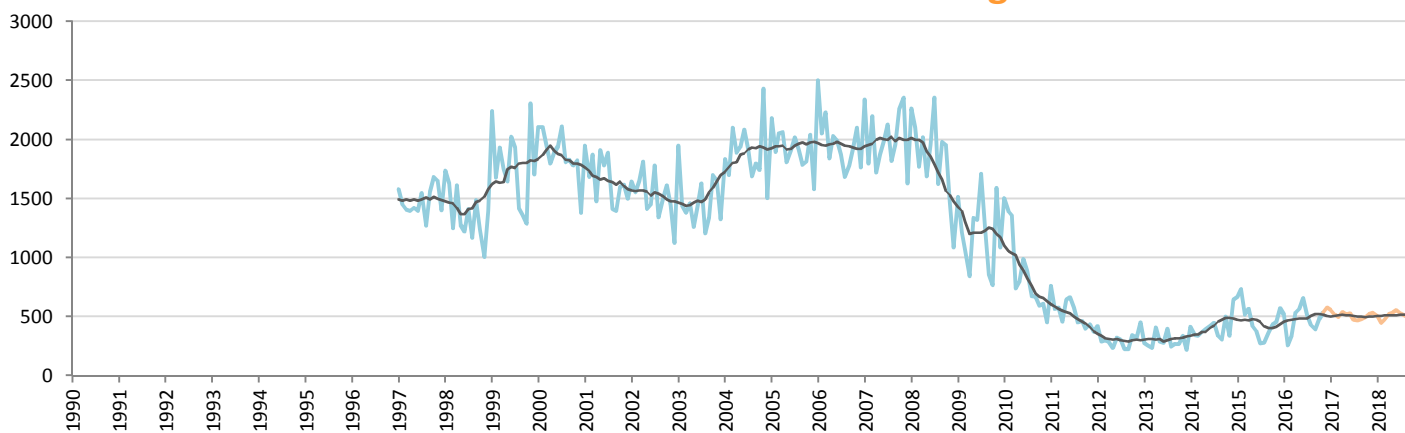


Data processing and forecast by CORAM

CORAM

	Jan.	Feb.	March	April	May	June	July	Aug.	Sept.	Oct.	Nov.	Dec.	YTD	FY
2015	5,848	4,894	6,529	7,801	9,071	8,999	5,448	4,470	5,125	4,946	5,859	6,816	68,990	75,806
2016	5,700	3,310	6,316	9,735	13,489	8,863	7,034	4,174	4,595	4,995	5,897	6,204	74,108	80,312
YTY (%)	-2.5	-32.4	-3.3	24.8	48.7	-1.5	29.1	-6.6	-10.3	1.0	0.6	-9.0	7.4	5.9

Car Sales Forecast : GREECE November 2016 - Light Com. Veh.

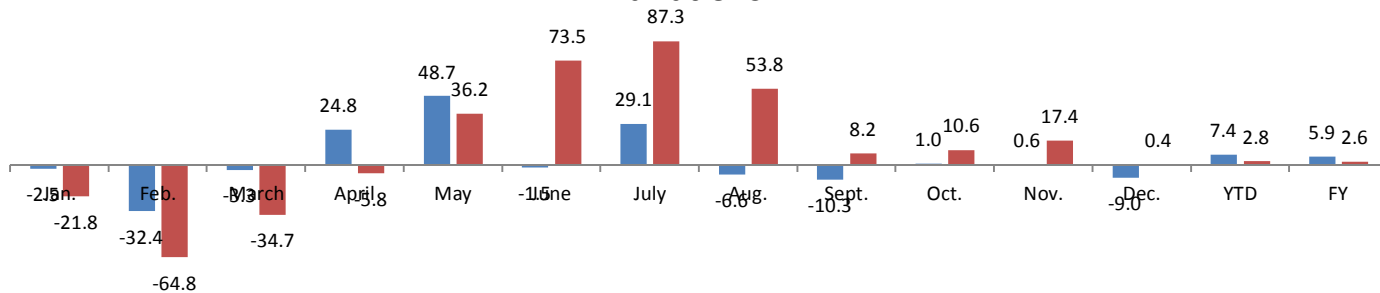


Data processing and forecast by CORAM

CORAM

	Jan.	Feb.	March	April	May	June	July	Aug.	Sept.	Oct.	Nov.	Dec.	YTD	FY
2015	661	732	519	568	417	378	275	279	364	432	454	574	5,079	5,653
2016	517	258	339	535	568	656	515	429	394	478	533	576	5,222	5,798
YTY (%)	-21.8	-64.8	-34.7	-5.8	36.2	73.5	87.3	53.8	8.2	10.6	17.4	0.4	2.8	2.6

YTY variations



Data source: ACEA. Data processing and forecast by CORAM.

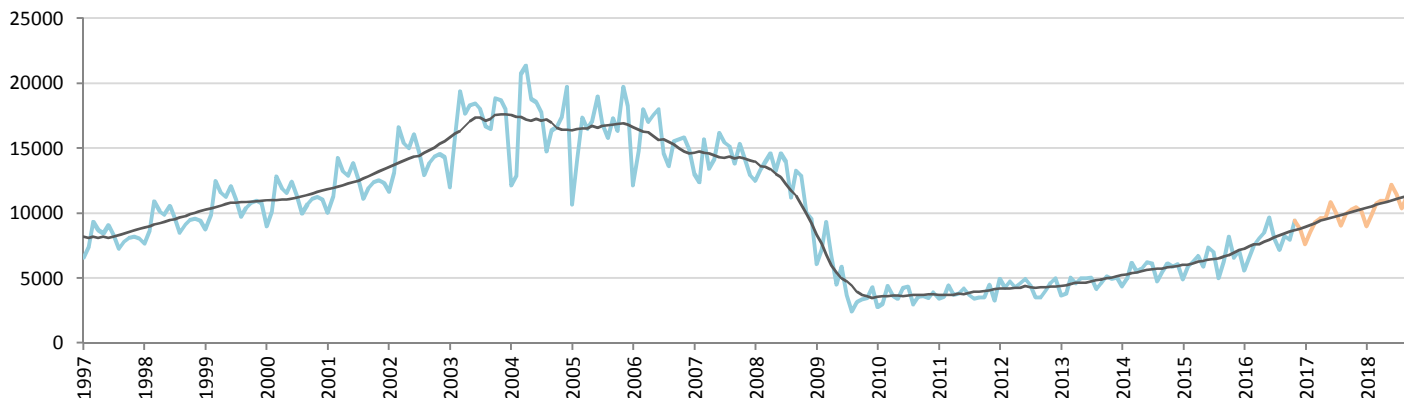
Car Sales Forecast : HUNGARY November 2016

Total	Jan.	Feb.	March	April	May	June	July	Aug.	Sept.	Oct.	Nov.	Dec.	YTD	FY
2015	6,234	7,143	7,854	8,072	7,092	8,805	8,345	5,958	7,582	9,776	8,457	9,385	85,318	94,703
2016	6,875	8,134	9,410	9,863	10,228	11,544	9,655	9,273	9,890	9,509	11,276	10,158	105,657	115,815
YTY (%)	10.3	13.9	19.8	22.2	44.2	31.1	15.7	55.6	30.4	-2.7	33.3	8.2	23.8	22.3

Comment: In November the car sales increase by 33,3%. 2016 forecast is an increase of 22,3%.

Trend FY 2017 : 131,000 13.1

Car Sales Forecast : HUNGARY November 2016 - Car

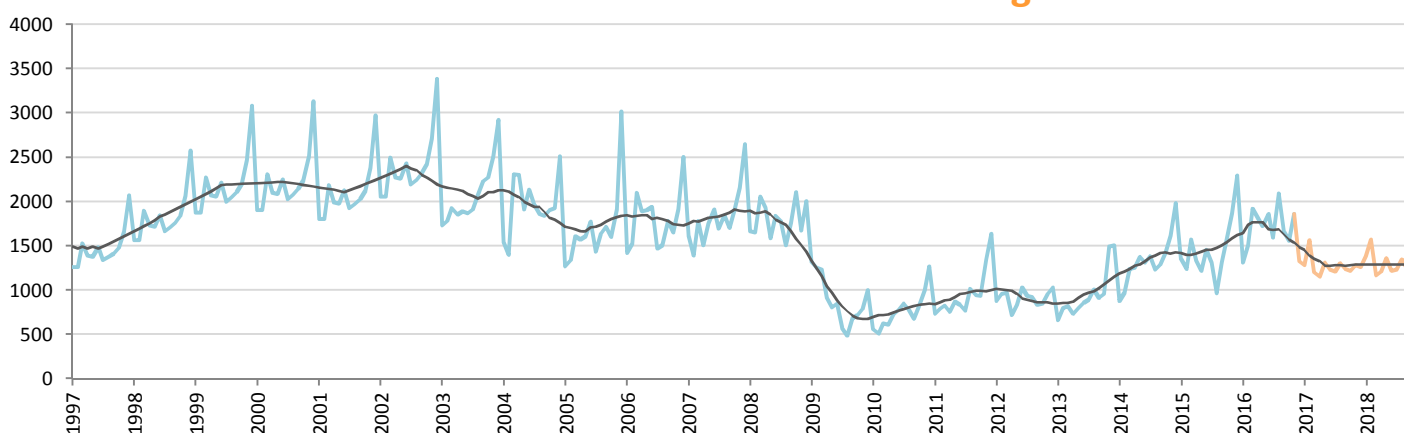


Data processing and forecast by CORAM

CORAM

	Jan.	Feb.	March	April	May	June	July	Aug.	Sept.	Oct.	Nov.	Dec.	YTD	FY
2015	4,880	5,902	6,284	6,736	5,874	7,347	7,032	4,997	6,270	8,192	6,590	7,094	70,104	77,198
2016	5,567	6,625	7,494	8,061	8,506	9,685	8,064	7,181	8,229	7,953	9,412	8,832	86,777	95,609
YTY (%)	14.1	12.3	19.3	19.7	44.8	31.8	14.7	43.7	31.2	-2.9	42.8	24.5	23.8	23.8

Car Sales Forecast : HUNGARY November 2016 - Light Com. Veh.

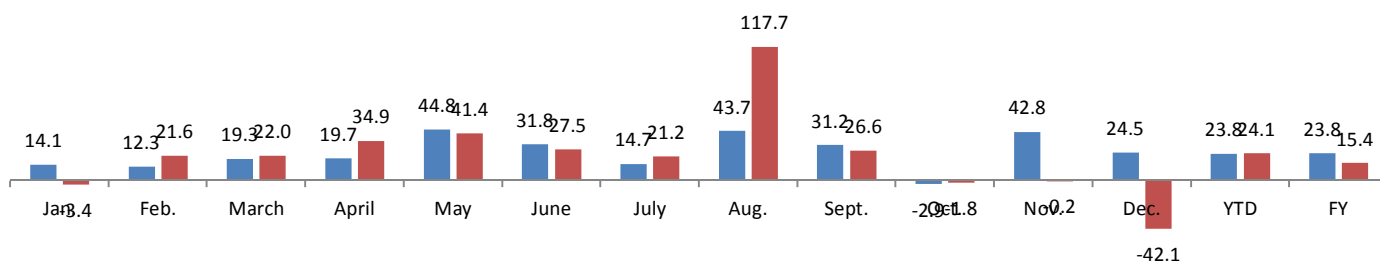


Data processing and forecast by CORAM

CORAM

	Jan.	Feb.	March	April	May	June	July	Aug.	Sept.	Oct.	Nov.	Dec.	YTD	FY
2015	1,354	1,241	1,570	1,336	1,218	1,458	1,313	961	1,312	1,584	1,867	2,291	15,214	17,505
2016	1,308	1,509	1,916	1,802	1,722	1,859	1,591	2,092	1,661	1,556	1,864	1,327	18,880	20,207
YTY (%)	-3.4	21.6	22.0	34.9	41.4	27.5	21.2	117.7	26.6	-1.8	-0.2	-42.1	24.1	15.4

YTY variations



Data source: ACEA. Data processing and forecast by CORAM.

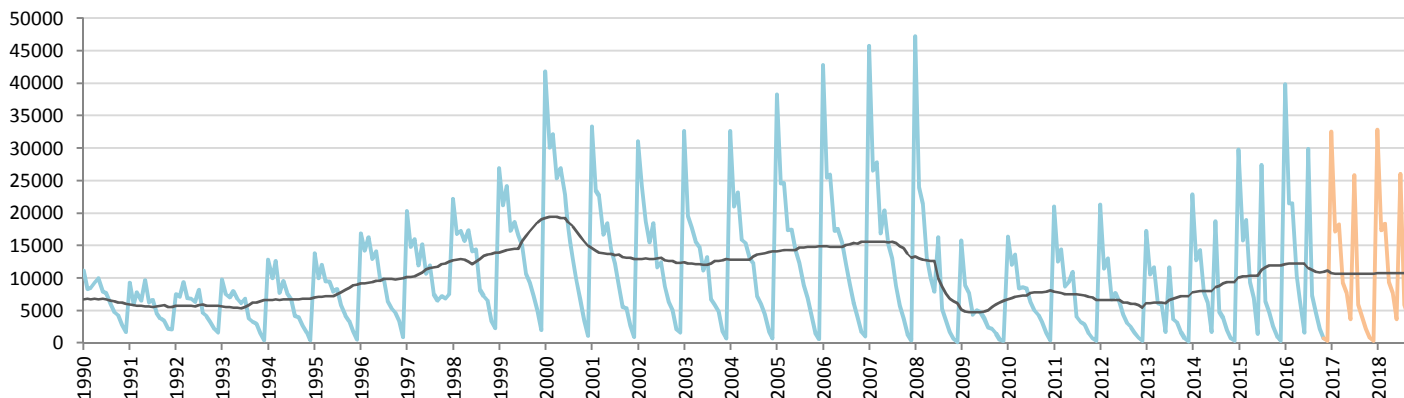
Car Sales Forecast : IRELAND November 2016

Total	Jan.	Feb.	March	April	May	June	July	Aug.	Sept.	Oct.	Nov.	Dec.	YTD	FY
2015	34,717	18,089	21,771	11,529	8,624	2,247	31,158	8,046	6,355	3,769	1,574	578	147,879	148,457
2016	45,508	25,046	24,964	12,713	8,337	2,488	34,224	9,111	6,317	3,419	1,411	583	173,538	174,121
YTY (%)	31.1	38.5	14.7	10.3	-3.3	10.7	9.8	13.2	-0.6	-9.3	-10.4	0.8	17.4	17.3

Comment: In November the car sales decrease by 10,4%. 2016 forecast is an increase of 17,3%.

Trend FY 2017 : 153,000 -12.1

Car Sales Forecast : IRELAND November 2016 - Car

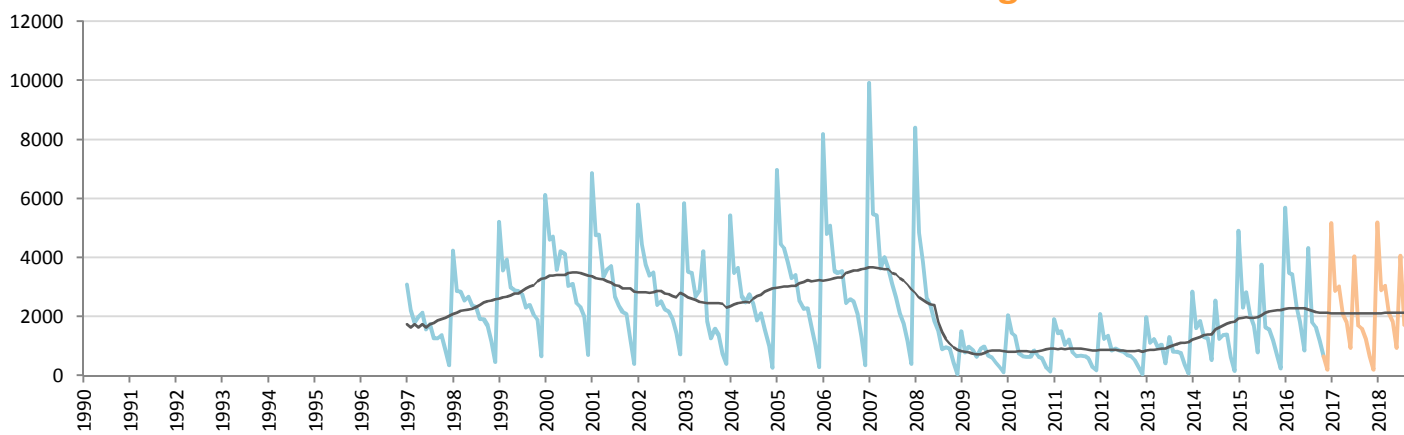


Data processing and forecast by CORAM

CORAM

	Jan.	Feb.	March	April	May	June	July	Aug.	Sept.	Oct.	Nov.	Dec.	YTD	FY
2015	29,808	15,778	18,933	9,451	6,919	1,448	27,394	6,408	4,775	2,562	948	342	124,424	124,766
2016	39,812	21,576	21,532	10,408	6,504	1,625	29,893	7,302	4,689	2,241	747	379	146,329	146,708
YTY (%)	33.6	36.7	13.7	10.1	-6.0	12.2	9.1	14.0	-1.8	-12.5	-21.2	10.8	17.6	17.6

Car Sales Forecast : IRELAND November 2016 - Light Com. Veh.

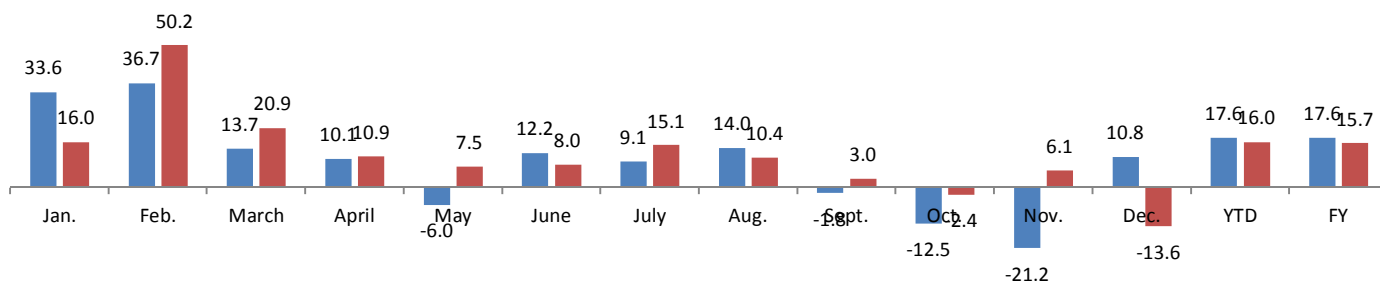


Data processing and forecast by CORAM

CORAM

	Jan.	Feb.	March	April	May	June	July	Aug.	Sept.	Oct.	Nov.	Dec.	YTD	FY
2015	4,909	2,311	2,838	2,078	1,705	799	3,764	1,638	1,580	1,207	626	236	23,455	23,691
2016	5,696	3,470	3,432	2,305	1,833	863	4,331	1,809	1,628	1,178	664	204	27,209	27,413
YTY (%)	16.0	50.2	20.9	10.9	7.5	8.0	15.1	10.4	3.0	-2.4	6.1	-13.6	16.0	15.7

YTY variations



Data source: ACEA. Data processing and forecast by CORAM.

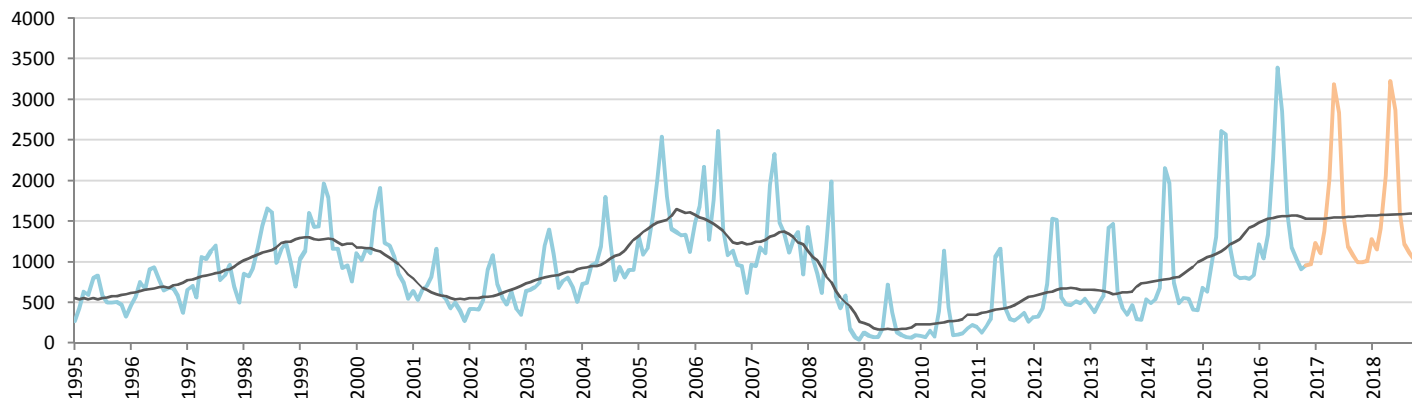
Car Sales Forecast : ICELAND November 2016

Total	Jan.	Feb.	March	April	May	June	July	Aug.	Sept.	Oct.	Nov.	Dec.	YTD	FY
2015	763	717	1,085	1,444	2,760	2,710	1,358	923	902	899	866	946	14,427	15,373
2016	1,349	1,186	1,498	2,483	3,621	2,994	1,738	1,296	1,145	1,035	1,077	1,104	19,422	20,526
YTY (%)	76.8	65.4	38.1	72.0	31.2	10.5	28.0	40.4	26.9	15.1	24.4	16.7	34.6	33.5

Comment: In November the car sales increase by 24,4%. 2016 forecast is an increase of 33,5%.

Trend FY 2017 : 20,300 -1.1

Car Sales Forecast : ICELAND November 2016 - Car

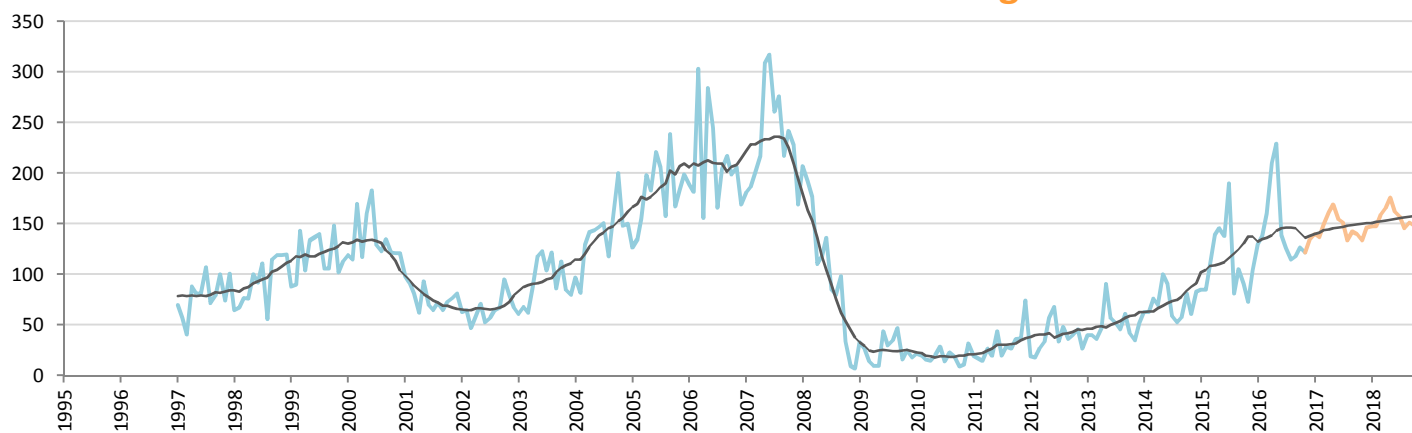


Data processing and forecast by CORAM

CORAM

	Jan.	Feb.	March	April	May	June	July	Aug.	Sept.	Oct.	Nov.	Dec.	YTD	FY
2015	678	632	977	1,305	2,614	2,572	1,168	842	797	808	793	842	13,186	14,028
2016	1,219	1,048	1,338	2,273	3,392	2,855	1,612	1,181	1,027	908	955	970	17,808	18,778
YTY (%)	79.8	65.8	36.9	74.2	29.8	11.0	38.0	40.3	28.9	12.4	20.4	15.2	35.1	33.9

Car Sales Forecast : ICELAND November 2016 - Light Com. Veh.

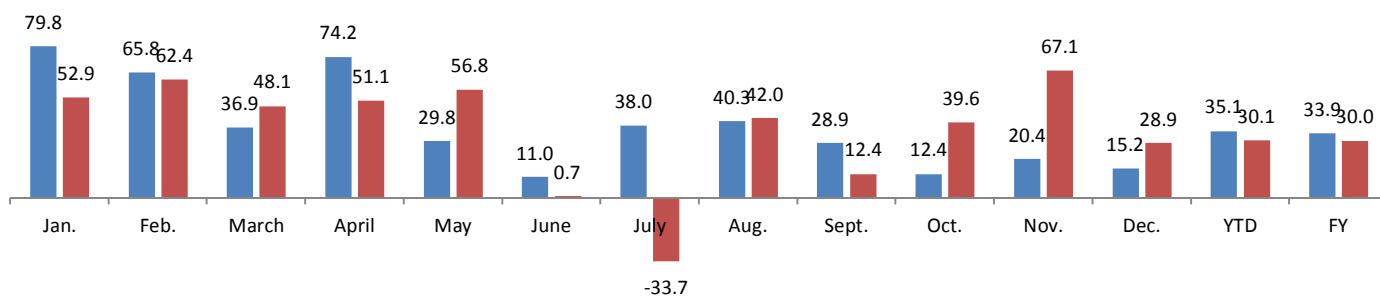


Data processing and forecast by CORAM

CORAM

	Jan.	Feb.	March	April	May	June	July	Aug.	Sept.	Oct.	Nov.	Dec.	YTD	FY
2015	85	85	108	139	146	138	190	81	105	91	73	104	1,241	1,345
2016	130	138	160	210	229	139	126	115	118	127	122	134	1,614	1,748
YTY (%)	52.9	62.4	48.1	51.1	56.8	0.7	-33.7	42.0	12.4	39.6	67.1	28.9	30.1	30.0

YTY variations



Data source: ACEA. Data processing and forecast by CORAM.

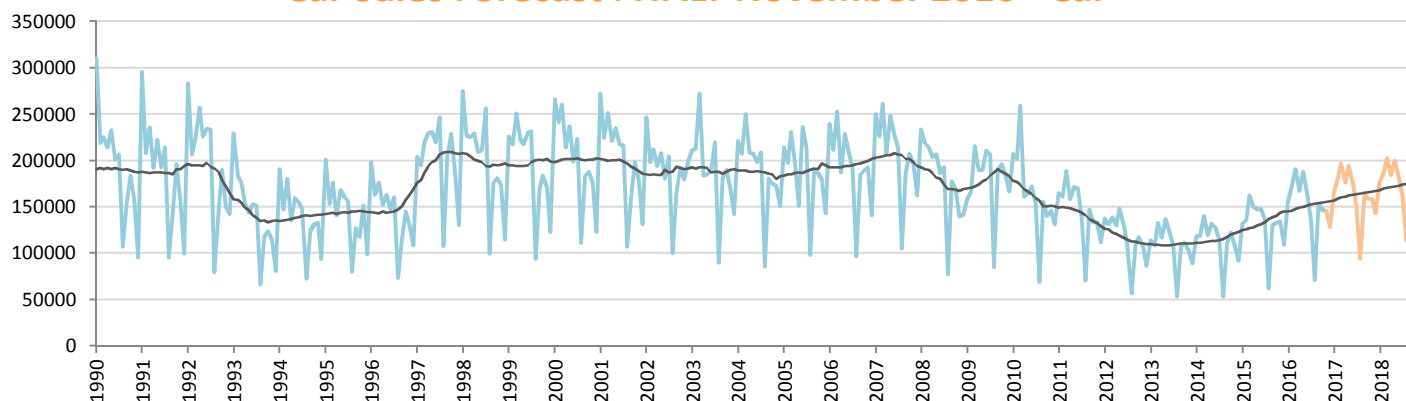
Car Sales Forecast : ITALY November 2016

Total	Jan.	Feb.	March	April	May	June	July	Aug.	Sept.	Oct.	Nov.	Dec.	YTD	FY
2015	141,275	144,967	173,542	160,591	158,372	158,950	148,697	67,403	141,271	145,029	147,021	123,595	1,587,118	1,710,713
2016	166,957	184,841	205,381	181,216	202,431	179,608	154,953	83,776	170,077	165,232	167,835	148,915	1,862,307	2,011,222
YTY (%)	18.2	27.5	18.3	12.8	27.8	13.0	4.2	24.3	20.4	13.9	14.2	20.5	17.3	17.6

Comment: In November the car sales increase by 14,2%. 2016 forecast is an increase of 17,6%.

Trend FY 2017 : 2,220,000 10.4

Car Sales Forecast : ITALY November 2016 - Car

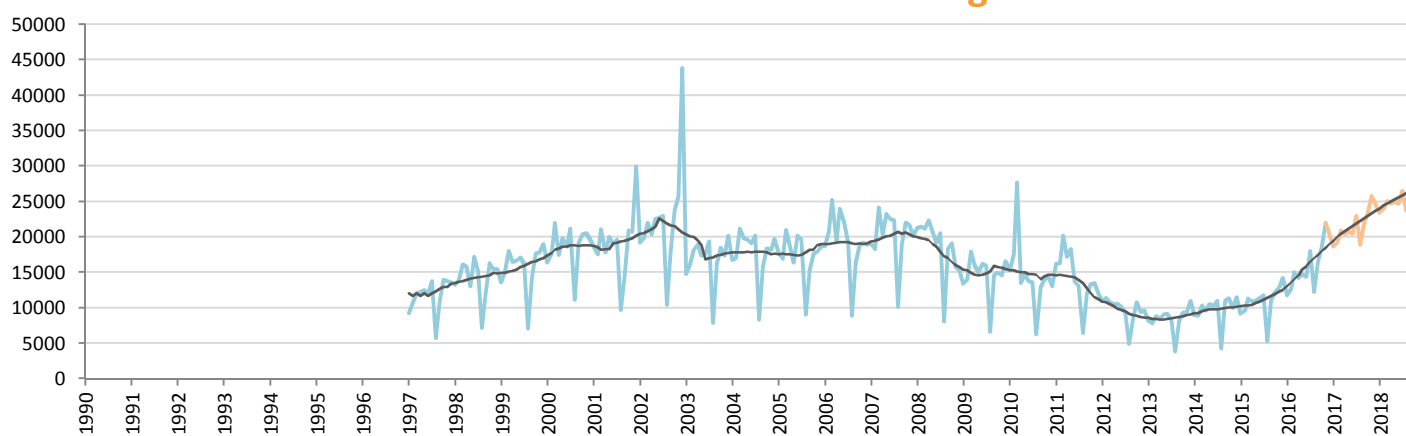


Data processing and forecast by CORAM

CORAM

	Jan.	Feb.	March	April	May	June	July	Aug.	Sept.	Oct.	Nov.	Dec.	YTD	FY
2015	132,111	135,317	162,187	149,700	147,405	147,661	136,897	62,103	130,071	132,929	134,021	109,395	1,470,402	1,579,797
2016	155,157	172,241	190,381	166,966	187,631	165,208	136,953	71,576	153,617	146,632	145,835	128,564	1,692,197	1,820,761
YTY (%)	17.4	27.3	17.4	11.5	27.3	11.9	0.0	15.3	18.1	10.3	8.8	17.5	15.1	15.3

Car Sales Forecast : ITALY November 2016 - Light Com. Veh.

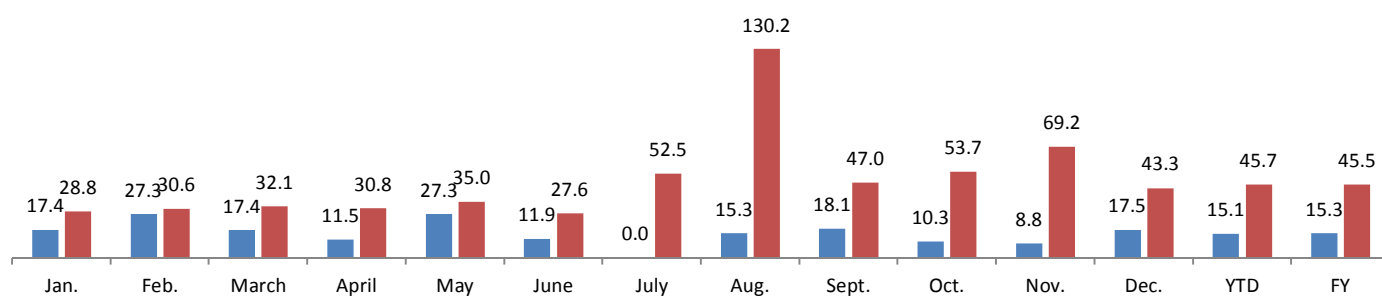


Data processing and forecast by CORAM

CORAM

	Jan.	Feb.	March	April	May	June	July	Aug.	Sept.	Oct.	Nov.	Dec.	YTD	FY
2015	9,164	9,650	11,355	10,891	10,967	11,289	11,800	5,300	11,200	12,100	13,000	14,200	116,716	130,916
2016	11,800	12,600	15,000	14,250	14,800	14,400	18,000	12,200	16,460	18,600	22,000	20,352	170,110	190,462
YTY (%)	28.8	30.6	32.1	30.8	35.0	27.6	52.5	130.2	47.0	53.7	69.2	43.3	45.7	45.5

YTY variations



Data source: ANFIA. Data processing and forecast by CORAM.

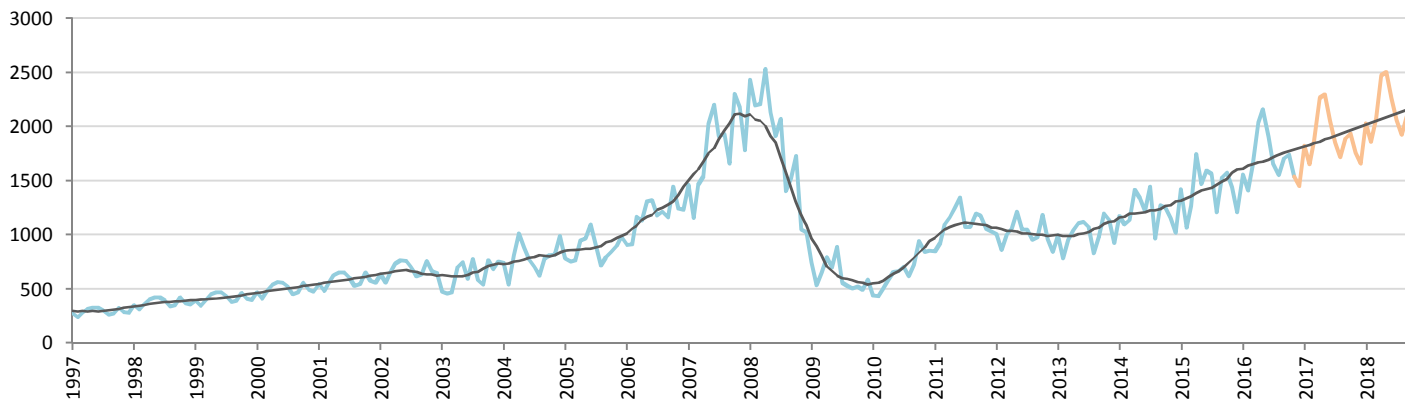
Car Sales Forecast : LITHUANIA November 2016

Total	Jan.	Feb.	March	April	May	June	July	Aug.	Sept.	Oct.	Nov.	Dec.	YTD	FY
2015	1,669	1,186	1,481	1,902	1,642	1,805	1,806	1,346	1,722	1,808	1,659	1,426	18,026	19,452
2016	1,784	1,619	1,877	2,323	2,401	2,187	1,913	1,767	1,944	1,923	1,749	1,677	21,487	23,164
YTY (%)	6.9	36.5	26.7	22.1	46.2	21.2	5.9	31.3	12.9	6.4	5.4	17.6	19.2	19.1

Comment: In November the car sales increase by 5,4%. 2016 forecast is an increase of 19,1%.

Trend FY 2017 : 25,500 10.1

Car Sales Forecast : LITHUANIA November 2016 - Car

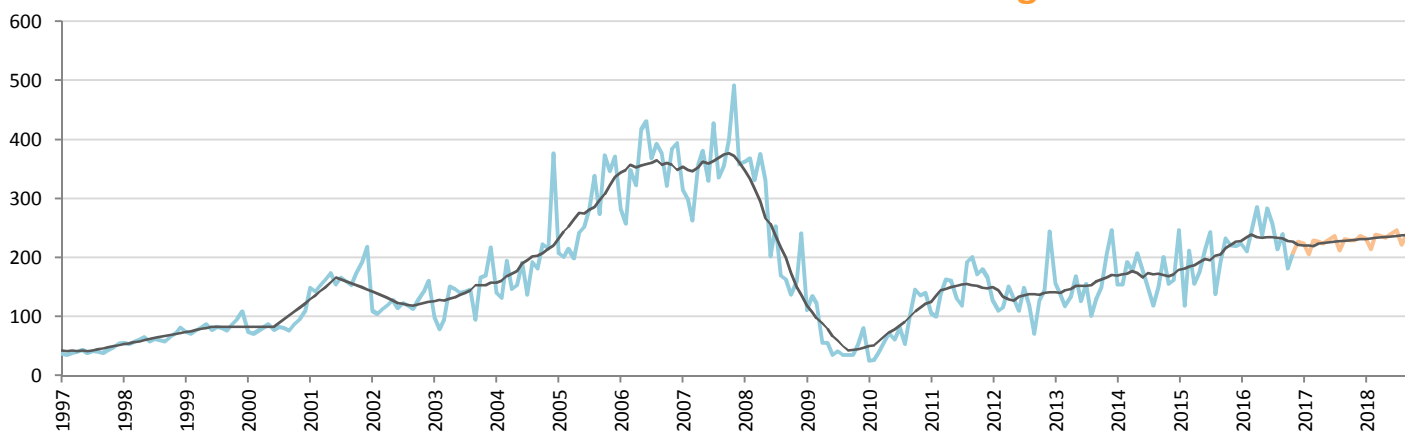


Data processing and forecast by CORAM

CORAM

	Jan.	Feb.	March	April	May	June	July	Aug.	Sept.	Oct.	Nov.	Dec.	YTD	FY
2015	1,422	1,067	1,269	1,747	1,467	1,591	1,563	1,208	1,530	1,576	1,438	1,207	15,878	17,085
2016	1,560	1,408	1,634	2,037	2,163	1,904	1,656	1,553	1,704	1,742	1,541	1,449	18,902	20,351
YTY (%)	9.7	32.0	28.8	16.6	47.4	19.7	6.0	28.6	11.4	10.5	7.2	20.1	19.0	19.1

Car Sales Forecast : LITHUANIA November 2016 - Light Com. Veh.

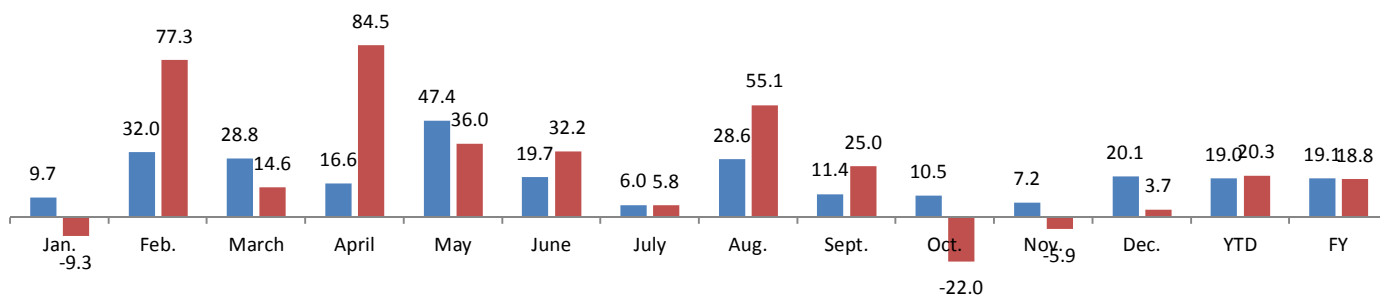


Data processing and forecast by CORAM

CORAM

	Jan.	Feb.	March	April	May	June	July	Aug.	Sept.	Oct.	Nov.	Dec.	YTD	FY
2015	247	119	212	155	175	214	243	138	192	232	221	219	2,148	2,367
2016	224	211	243	286	238	283	257	214	240	181	208	227	2,585	2,812
YTY (%)	-9.3	77.3	14.6	84.5	36.0	32.2	5.8	55.1	25.0	-22.0	-5.9	3.7	20.3	18.8

YTY variations



Data source: ACEA. Data processing and forecast by CORAM.

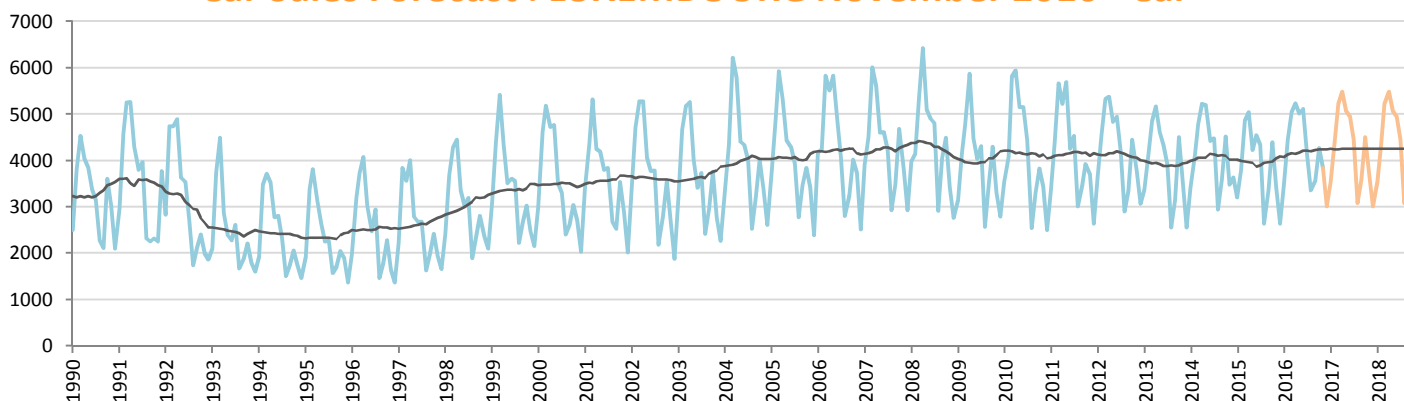
Car Sales Forecast : LUXEMBOURG November 2016

Total	Jan.	Feb.	March	April	May	June	July	Aug.	Sept.	Oct.	Nov.	Dec.	YTD	FY
2015	3,537	4,045	5,183	5,357	4,507	4,916	4,698	2,896	3,657	4,758	3,798	2,928	47,352	50,280
2016	3,787	4,783	5,515	5,601	5,375	5,571	4,500	3,676	3,844	4,651	4,232	3,312	51,535	54,847
YTY (%)	7.1	18.2	6.4	4.6	19.3	13.3	-4.2	26.9	5.1	-2.2	11.4	13.1	8.8	9.1

Comment: In November the car sales increase by 11,4%. 2016 forecast is an increase of 9,1%.

Trend FY 2017 : 55,400 1.0

Car Sales Forecast : LUXEMBOURG November 2016 - Car

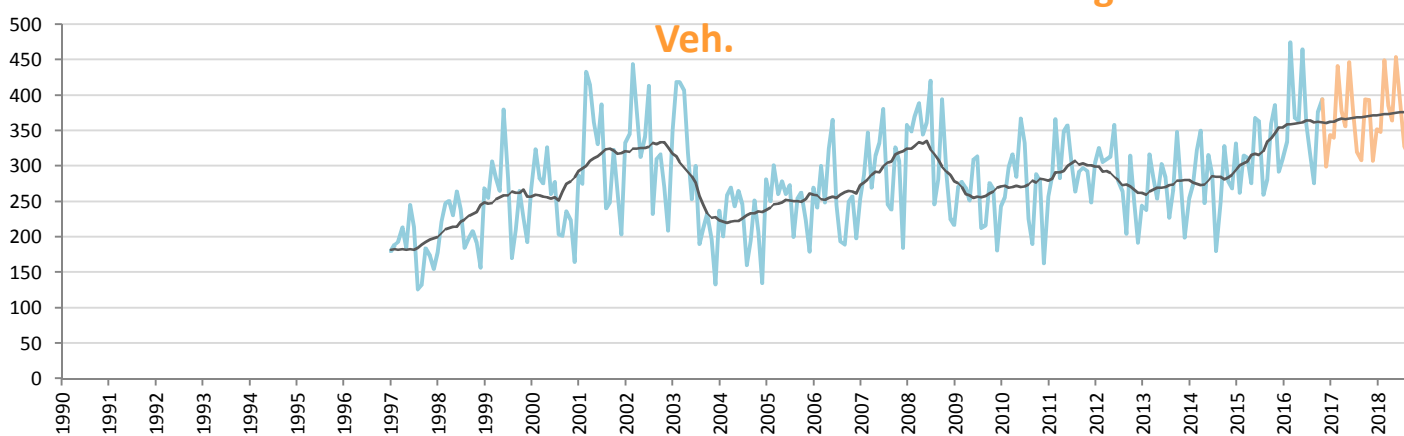


Data processing and forecast by CORAM

CORAM

	Jan.	Feb.	March	April	May	June	July	Aug.	Sept.	Oct.	Nov.	Dec.	YTD	FY
2015	3,205	3,783	4,868	5,046	4,231	4,548	4,334	2,636	3,376	4,398	3,412	2,636	43,837	46,473
2016	3,477	4,448	5,040	5,233	5,011	5,106	4,141	3,359	3,568	4,275	3,838	3,012	47,496	50,508
YTY (%)	8.5	17.6	3.5	3.7	18.4	12.3	-4.5	27.4	5.7	-2.8	12.5	14.3	8.3	8.7

Car Sales Forecast : LUXEMBOURG November 2016 - Light Com. Veh.

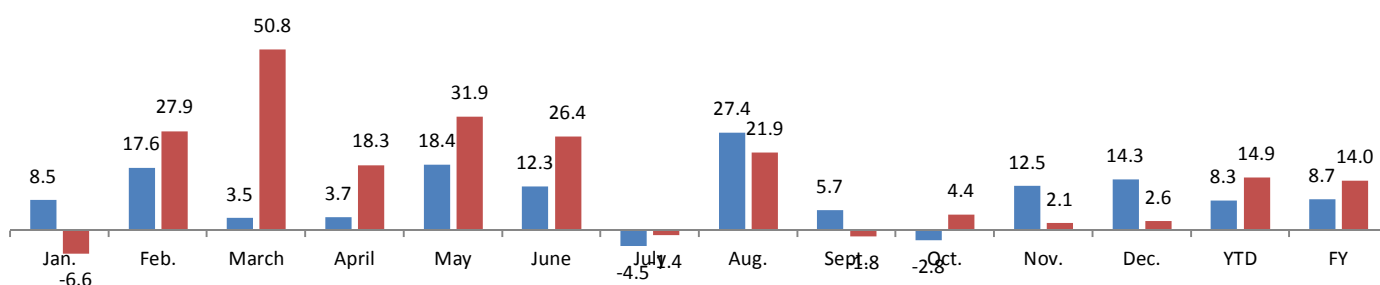


Data processing and forecast by CORAM

CORAM

	Jan.	Feb.	March	April	May	June	July	Aug.	Sept.	Oct.	Nov.	Dec.	YTD	FY
2015	332	262	315	311	276	368	364	260	281	360	386	292	3,515	3,807
2016	310	335	475	368	364	465	359	317	276	376	394	300	4,039	4,339
YTY (%)	-6.6	27.9	50.8	18.3	31.9	26.4	-1.4	21.9	-1.8	4.4	2.1	2.6	14.9	14.0

YTY variations



Data source: ACEA. Data processing and forecast by CORAM.

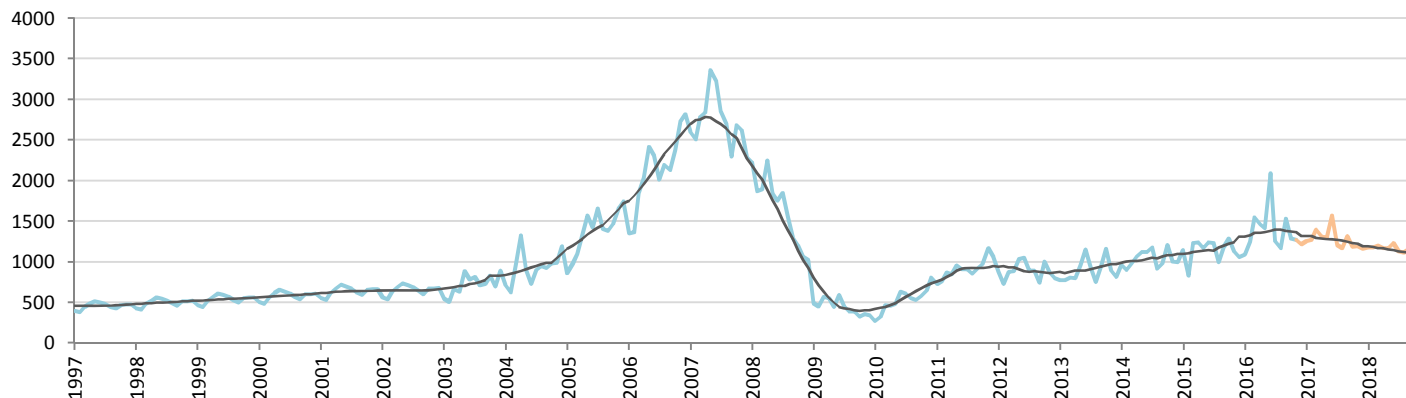
Car Sales Forecast : LATVIA November 2016

Total	Jan.	Feb.	March	April	May	June	July	Aug.	Sept.	Oct.	Nov.	Dec.	YTD	FY
2015	1,336	978	1,432	1,452	1,404	1,465	1,400	1,173	1,355	1,503	1,362	1,253	14,860	16,113
2016	1,261	1,420	1,712	1,646	1,588	2,244	1,449	1,373	1,716	1,442	1,479	1,402	17,330	18,732
YTY (%)	-5.6	45.2	19.6	13.4	13.1	53.2	3.5	17.1	26.6	-4.1	8.6	11.9	16.6	16.3

Comment: In November the car sales increase by 8,6%. 2016 forecast is an increase of 16,3%.

Trend FY 2017 : 17,600 -6.0

Car Sales Forecast : LATVIA November 2016 - Car

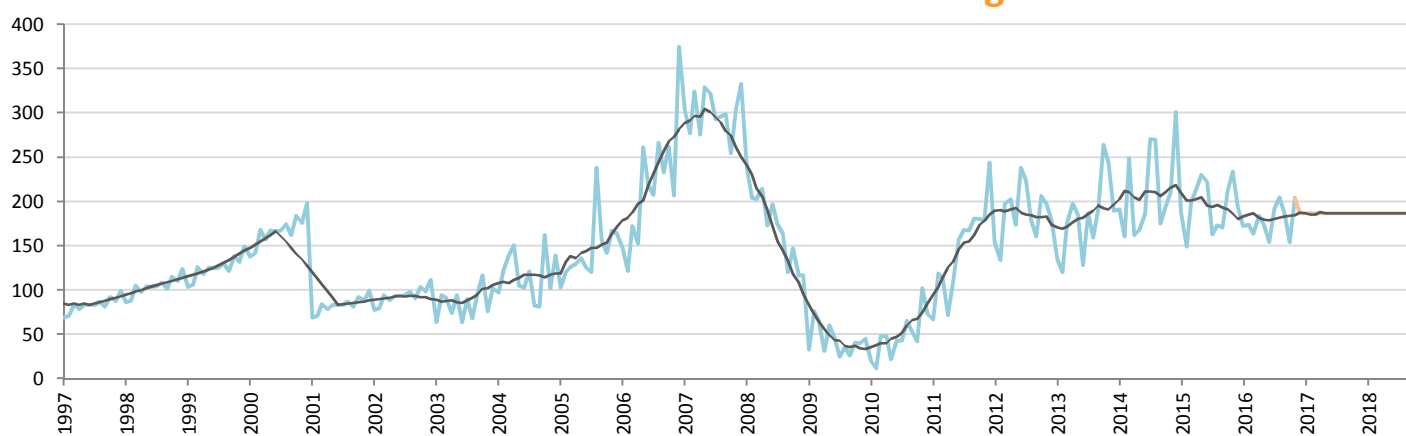


Data processing and forecast by CORAM

CORAM

	Jan.	Feb.	March	April	May	June	July	Aug.	Sept.	Oct.	Nov.	Dec.	YTD	FY
2015	1,148	829	1,233	1,238	1,174	1,243	1,237	1,000	1,184	1,291	1,128	1,060	12,705	13,765
2016	1,089	1,246	1,548	1,462	1,415	2,090	1,257	1,168	1,530	1,288	1,275	1,215	15,368	16,583
YTY (%)	-5.1	50.3	25.5	18.1	20.5	68.1	1.6	16.8	29.2	-0.2	13.0	14.6	21.0	20.5

Car Sales Forecast : LATVIA November 2016 - Light Com. Veh.

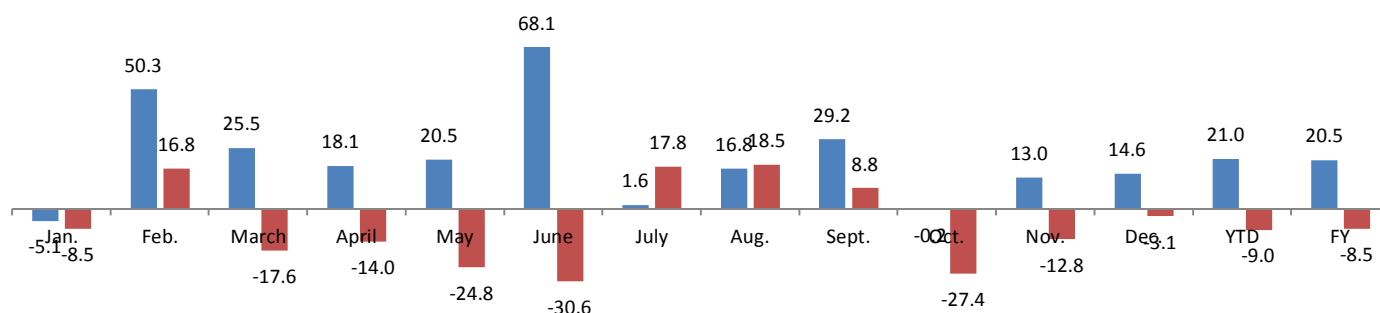


Data processing and forecast by CORAM

CORAM

	Jan.	Feb.	March	April	May	June	July	Aug.	Sept.	Oct.	Nov.	Dec.	YTD	FY
2015	188	149	199	214	230	222	163	173	171	212	234	193	2,155	2,348
2016	172	174	164	184	173	154	192	205	186	154	204	187	1,962	2,149
YTY (%)	-8.5	16.8	-17.6	-14.0	-24.8	-30.6	17.8	18.5	8.8	-27.4	-12.8	-3.1	-9.0	-8.5

YTY variations



Data source: ACEA. Data processing and forecast by CORAM.

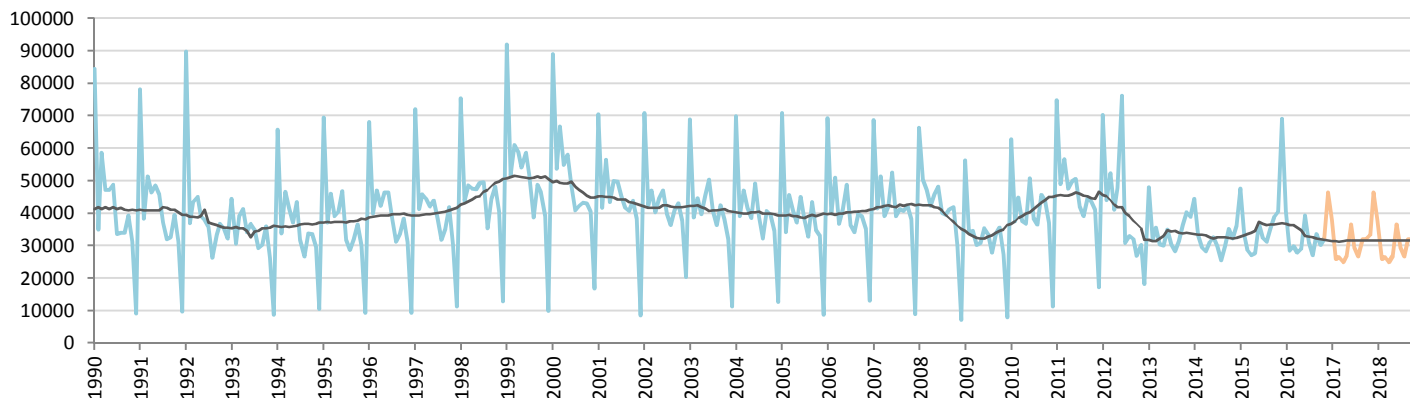
Car Sales Forecast : NETHERLANDS November 2016

Total	Jan.	Feb.	March	April	May	June	July	Aug.	Sept.	Oct.	Nov.	Dec.	YTD	FY
2015	54,045	38,007	34,537	31,614	32,562	42,740	36,816	34,915	40,076	43,516	45,293	72,569	434,121	506,690
2016	48,183	34,713	37,514	33,754	34,747	46,722	36,126	31,731	38,841	35,623	38,235	49,824	416,189	466,013
YTY (%)	-10.8	-8.7	8.6	6.8	6.7	9.3	-1.9	-9.1	-3.1	-18.1	-15.6	-31.3	-4.1	-8.0

Comment: In November the car sales decrease by 15,6%. 2016 forecast is a decrease of 8%.

Trend FY 2017 : 451,000 -3.2

Car Sales Forecast : NETHERLANDS November 2016 - Car

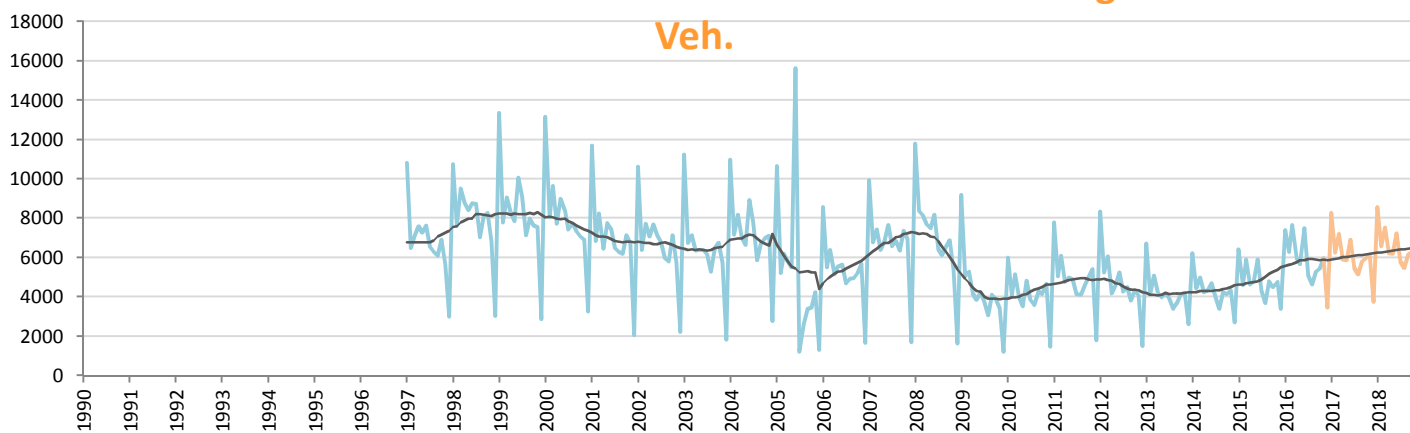


Data processing and forecast by CORAM

CORAM

	Jan.	Feb.	March	April	May	June	July	Aug.	Sept.	Oct.	Nov.	Dec.	YTD	FY
2015	47,639	33,421	28,642	26,996	27,757	36,839	32,494	31,225	35,277	39,006	40,516	69,159	379,812	448,971
2016	40,776	28,408	29,869	27,783	29,083	39,241	31,050	27,110	33,545	30,189	32,271	46,376	349,325	395,701
YTY (%)	-14.4	-15.0	4.3	2.9	4.8	6.5	-4.4	-13.2	-4.9	-22.6	-20.3	-32.9	-8.0	-11.9

Car Sales Forecast : NETHERLANDS November 2016 - Light Com. Veh.

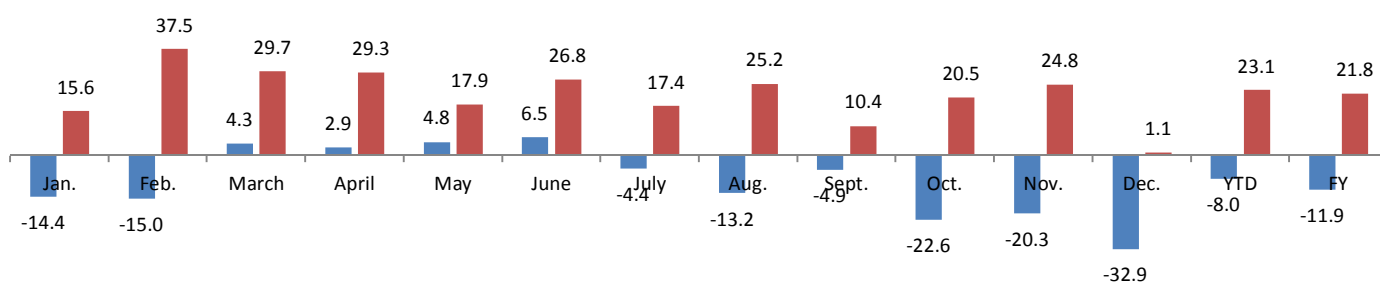


Data processing and forecast by CORAM

CORAM

	Jan.	Feb.	March	April	May	June	July	Aug.	Sept.	Oct.	Nov.	Dec.	YTD	FY
2015	6,406	4,586	5,895	4,618	4,805	5,901	4,322	3,690	4,799	4,510	4,777	3,410	54,309	57,719
2016	7,407	6,305	7,645	5,971	5,664	7,481	5,076	4,621	5,296	5,434	5,964	3,447	66,864	70,311
YTY (%)	15.6	37.5	29.7	29.3	17.9	26.8	17.4	25.2	10.4	20.5	24.8	1.1	23.1	21.8

YTY variations



Data source: ACEA. Data processing and forecast by CORAM.

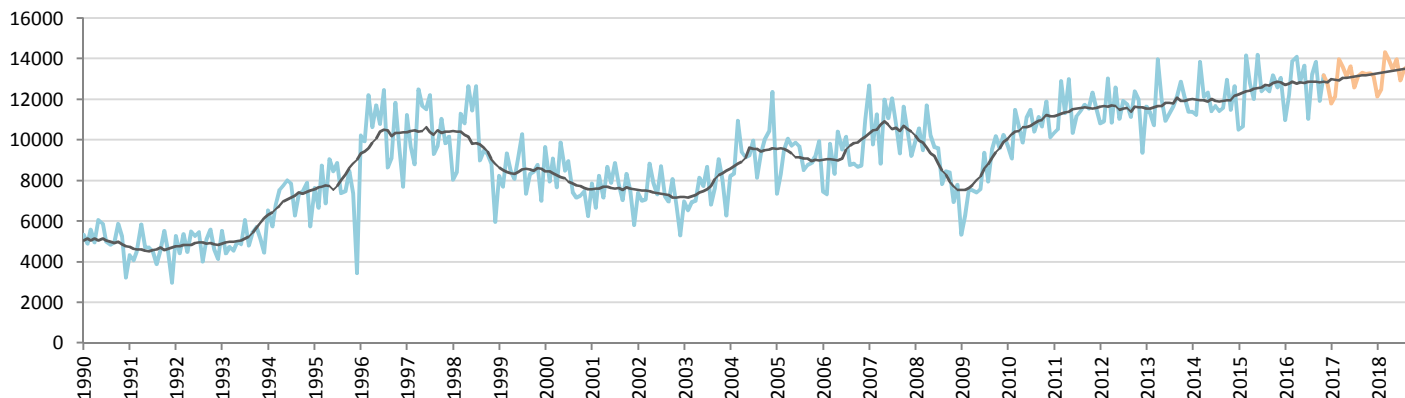
Car Sales Forecast : NORWAY November 2016

Total	Jan.	Feb.	March	April	May	June	July	Aug.	Sept.	Oct.	Nov.	Dec.	YTD	FY
2015	12,791	13,153	17,029	15,669	14,720	16,806	14,479	15,158	14,871	16,089	15,632	17,543	166,397	183,940
2016	12,880	14,708	16,653	17,237	15,459	16,592	13,241	16,788	16,697	14,796	16,626	16,288	171,677	187,965
YTY (%)	0.7	11.8	-2.2	10.0	5.0	-1.3	-8.6	10.8	12.3	-8.0	6.4	-7.2	3.2	2.2

Comment: In November the car sales increase by 6,4%. 2016 forecast is an increase of 2,2%.

Trend FY 2017 : 194,000 3.2

Car Sales Forecast : NORWAY November 2016 - Car

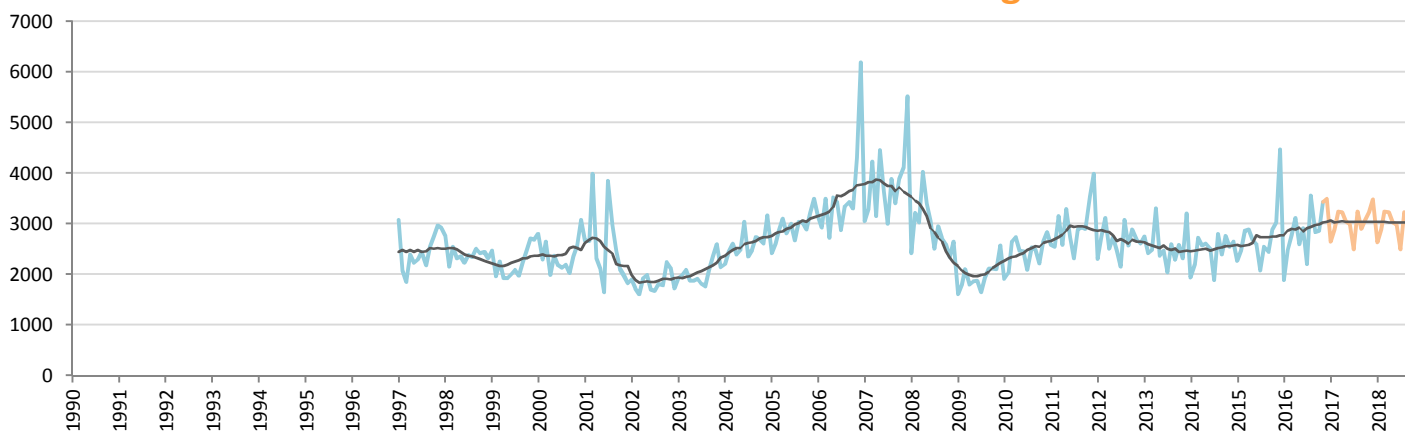


Data processing and forecast by CORAM

CORAM

	Jan.	Feb.	March	April	May	June	July	Aug.	Sept.	Oct.	Nov.	Dec.	YTD	FY
2015	10,523	10,685	14,159	12,782	12,036	14,207	12,394	12,604	12,421	13,197	12,600	13,078	137,608	150,686
2016	10,991	12,222	13,875	14,116	12,864	13,681	11,040	13,232	13,854	11,932	13,194	12,796	141,001	153,797
YTY (%)	4.4	14.4	-2.0	10.4	6.9	-3.7	-10.9	5.0	11.5	-9.6	4.7	-2.2	2.5	2.1

Car Sales Forecast : NORWAY November 2016 - Light Com. Veh.

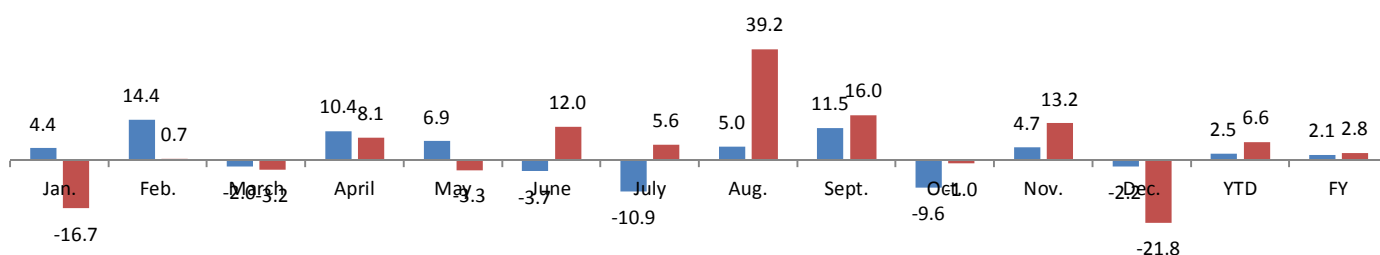


Data processing and forecast by CORAM

CORAM

	Jan.	Feb.	March	April	May	June	July	Aug.	Sept.	Oct.	Nov.	Dec.	YTD	FY
2015	2,268	2,468	2,870	2,887	2,684	2,599	2,085	2,554	2,450	2,892	3,032	4,465	28,789	33,254
2016	1,889	2,486	2,778	3,121	2,595	2,911	2,201	3,556	2,843	2,864	3,432	3,493	30,676	34,169
YTY (%)	-16.7	0.7	-3.2	8.1	-3.3	12.0	5.6	39.2	16.0	-1.0	13.2	-21.8	6.6	2.8

YTY variations



Data source: ACEA. Data processing and forecast by CORAM.

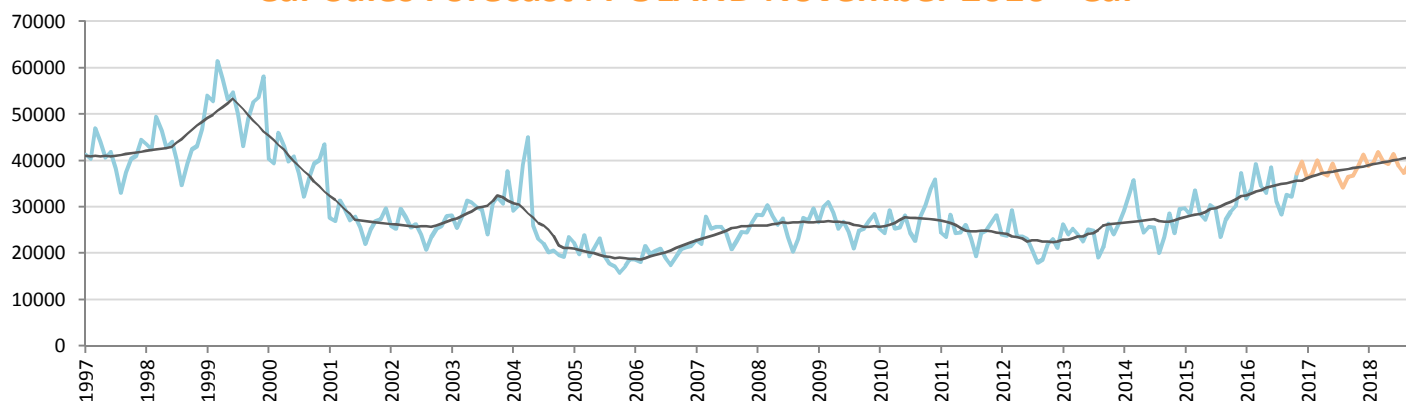
Car Sales Forecast : POLAND November 2016

Total	Jan.	Feb.	March	April	May	June	July	Aug.	Sept.	Oct.	Nov.	Dec.	YTD	FY
2015	32,900	32,303	38,353	32,554	31,401	34,554	33,998	27,131	32,017	34,013	35,327	43,705	364,551	408,256
2016	35,783	38,283	44,571	39,827	37,918	44,157	35,682	33,735	37,385	36,877	42,165	45,151	426,383	471,534
YTY (%)	8.8	18.5	16.2	22.3	20.8	27.8	5.0	24.3	16.8	8.4	19.4	3.3	17.0	15.5

Comment: In November the car sales increase by 19,4%. 2016 forecast is an increase of 15,5%.

Trend FY 2017 : 509,000 7.9

Car Sales Forecast : POLAND November 2016 - Car

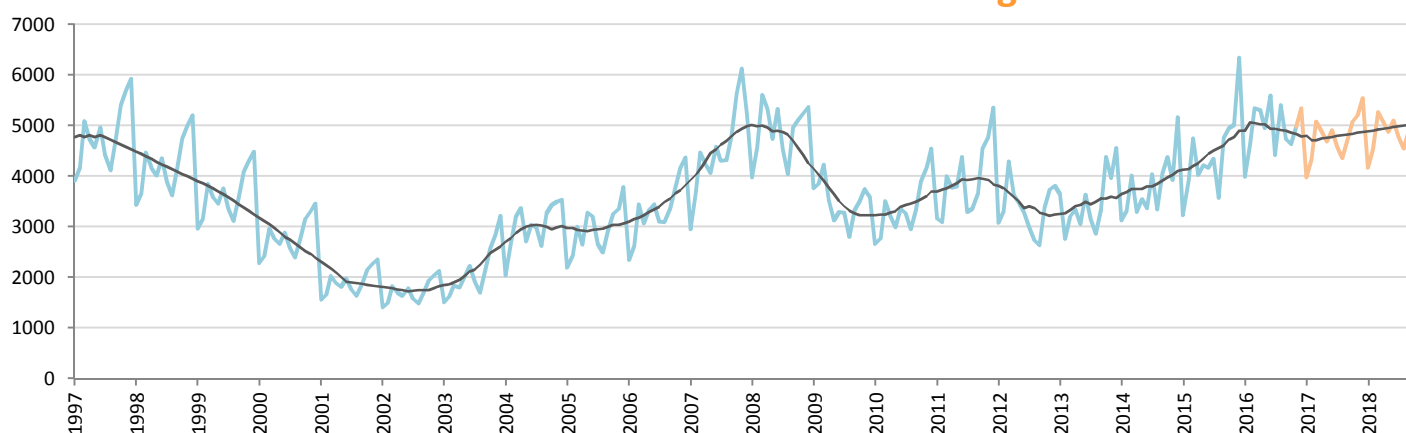


Data processing and forecast by CORAM

CORAM

	Jan.	Feb.	March	April	May	June	July	Aug.	Sept.	Oct.	Nov.	Dec.	YTD	FY
2015	29,673	28,396	33,601	28,526	27,186	30,390	29,654	23,559	27,255	29,062	30,312	37,358	317,614	354,972
2016	31,796	33,663	39,229	34,517	32,968	38,555	31,262	28,323	32,653	32,245	37,191	39,802	372,402	412,204
YTY (%)	7.2	18.5	16.7	21.0	21.3	26.9	5.4	20.2	19.8	11.0	22.7	6.5	17.2	16.1

Car Sales Forecast : POLAND November 2016 - Light Com. Veh.

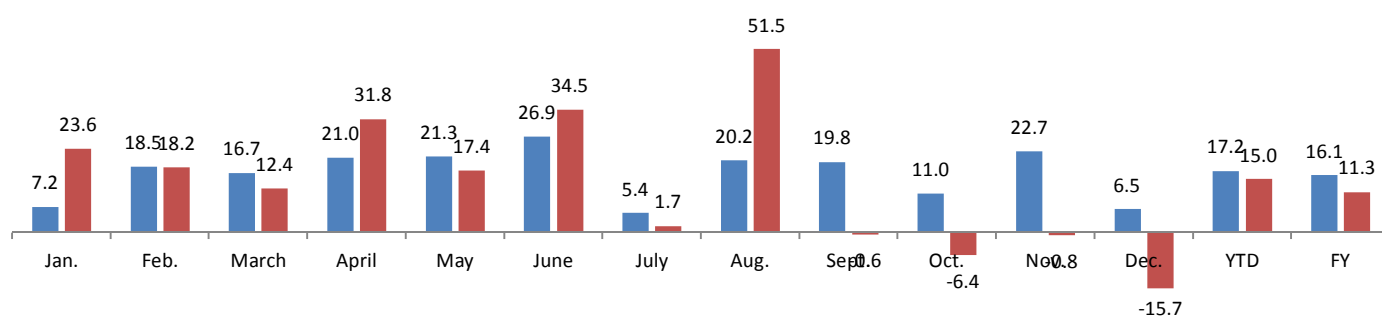


Data processing and forecast by CORAM

CORAM

	Jan.	Feb.	March	April	May	June	July	Aug.	Sept.	Oct.	Nov.	Dec.	YTD	FY
2015	3,227	3,907	4,752	4,028	4,215	4,164	4,344	3,572	4,762	4,951	5,015	6,347	46,937	53,284
2016	3,987	4,620	5,342	5,310	4,950	5,602	4,420	5,412	4,732	4,632	4,974	5,349	53,981	59,330
YTY (%)	23.6	18.2	12.4	31.8	17.4	34.5	1.7	51.5	-0.6	-6.4	-0.8	-15.7	15.0	11.3

YTY variations



Data source: ACEA. Data processing and forecast by CORAM.

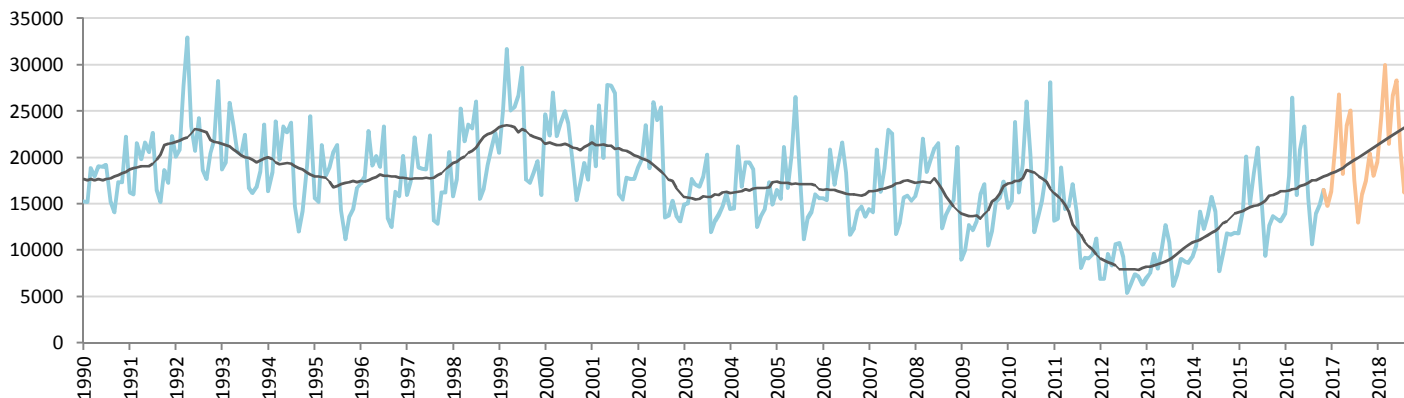
Car Sales Forecast : PORTUGAL November 2016

Total	Jan.	Feb.	March	April	May	June	July	Aug.	Sept.	Oct.	Nov.	Dec.	YTD	FY
2015	13,770	16,442	22,697	17,410	20,753	23,875	18,101	11,372	15,180	16,468	16,369	16,854	192,437	209,291
2016	15,974	20,238	30,277	18,578	23,535	26,629	18,442	12,847	16,949	17,503	19,682	19,603	220,654	240,257
YTY (%)	16.0	23.1	33.4	6.7	13.4	11.5	1.9	13.0	11.7	6.3	20.2	16.3	14.7	14.8

Comment: In November the car sales increase by 20,2%. 2016 forecast is an increase of 14,8%.

Trend FY 2017 : 269,000 12.0

Car Sales Forecast : PORTUGAL November 2016 - Car

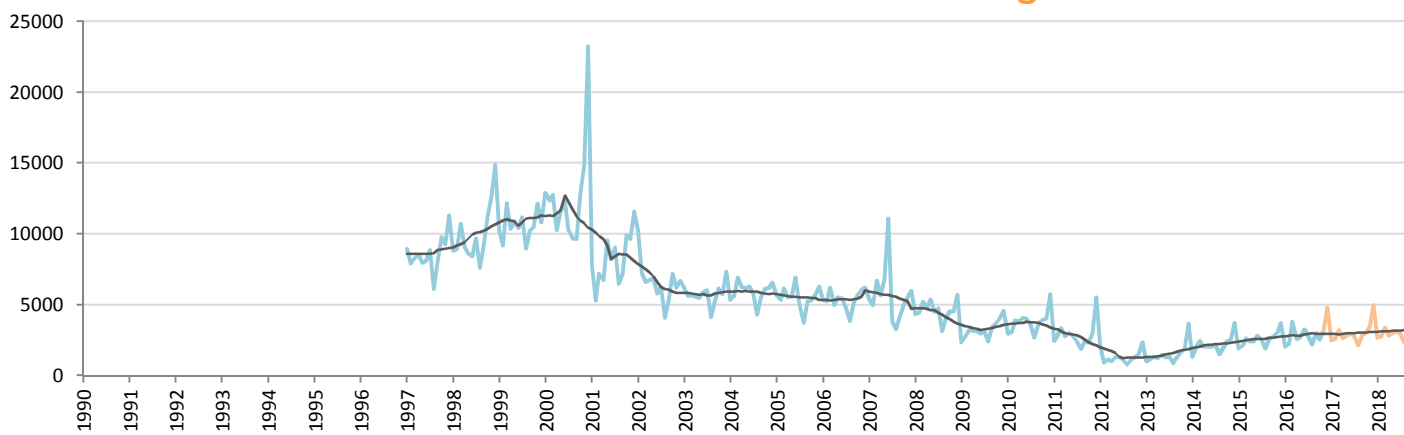


Data processing and forecast by CORAM

CORAM

	Jan.	Feb.	March	April	May	June	July	Aug.	Sept.	Oct.	Nov.	Dec.	YTD	FY
2015	11,840	14,307	20,081	15,016	18,345	21,072	15,560	9,436	12,625	13,696	13,343	13,126	165,321	178,447
2016	13,938	18,025	26,458	15,984	20,836	23,376	15,638	10,649	13,965	14,936	16,525	14,817	190,330	205,147
YTY (%)	17.7	26.0	31.8	6.4	13.6	10.9	0.5	12.9	10.6	9.1	23.8	12.9	15.1	15.0

Car Sales Forecast : PORTUGAL November 2016 - Light Com. Veh.

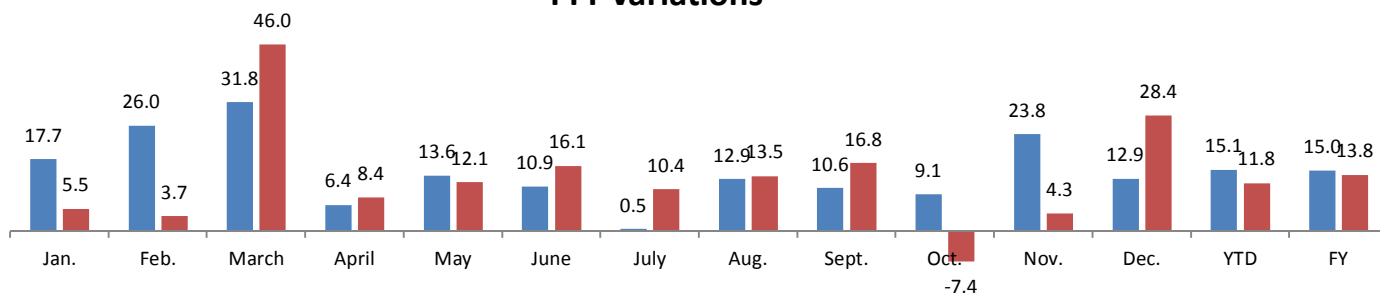


Data processing and forecast by CORAM

CORAM

	Jan.	Feb.	March	April	May	June	July	Aug.	Sept.	Oct.	Nov.	Dec.	YTD	FY
2015	1,930	2,135	2,616	2,394	2,408	2,803	2,541	1,936	2,555	2,772	3,026	3,728	27,116	30,844
2016	2,036	2,213	3,819	2,594	2,699	3,253	2,804	2,198	2,984	2,567	3,157	4,786	30,324	35,110
YTY (%)	5.5	3.7	46.0	8.4	12.1	16.1	10.4	13.5	16.8	-7.4	4.3	28.4	11.8	13.8

YTY variations



Data source: ACEA. Data processing and forecast by CORAM.

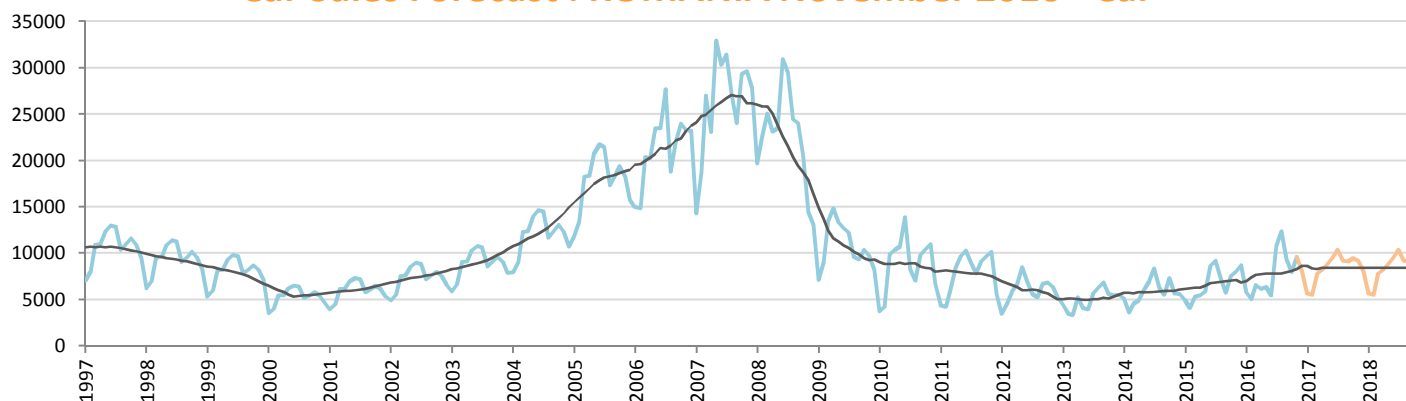
Car Sales Forecast : ROMANIA November 2016

Total	Jan.	Feb.	March	April	May	June	July	Aug.	Sept.	Oct.	Nov.	Dec.	YTD	FY
2015	5,838	4,805	6,105	6,288	6,804	9,540	10,271	8,126	6,724	8,504	9,178	10,026	82,183	92,209
2016	6,823	6,199	7,711	7,332	7,451	6,464	11,929	13,614	10,849	8,933	11,039	9,551	98,344	107,895
YTY (%)	16.9	29.0	26.3	16.6	9.5	-32.2	16.1	67.5	61.3	5.0	20.3	-4.7	19.7	17.0

Comment: In November the car sales increase by 20,3%. 2016 forecast is an increase of 17%.

Trend FY 2017 : 119,000 10.3

Car Sales Forecast : ROMANIA November 2016 - Car

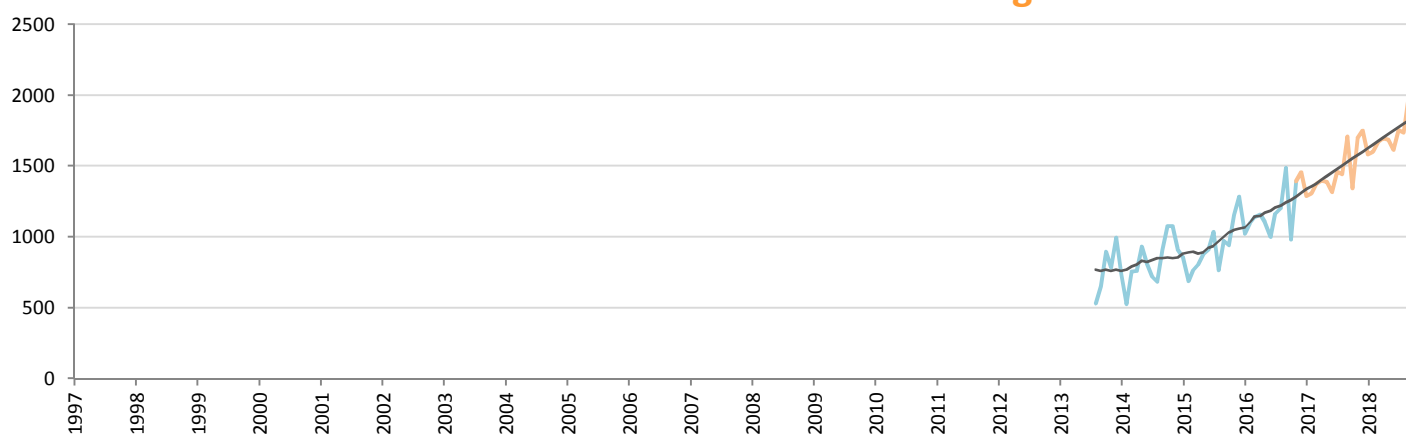


Data processing and forecast by CORAM

CORAM

	Jan.	Feb.	March	April	May	June	July	Aug.	Sept.	Oct.	Nov.	Dec.	YTD	FY
2015	4,978	4,116	5,339	5,482	5,927	8,630	9,234	7,362	5,752	7,562	8,022	8,739	72,404	81,143
2016	5,800	5,099	6,572	6,174	6,345	5,462	10,768	12,411	9,361	7,951	9,645	8,095	85,588	93,683
YTY (%)	16.5	23.9	23.1	12.6	7.1	-36.7	16.6	68.6	62.7	5.1	20.2	-7.4	18.2	15.5

Car Sales Forecast : ROMANIA November 2016 - Light Com. Veh.

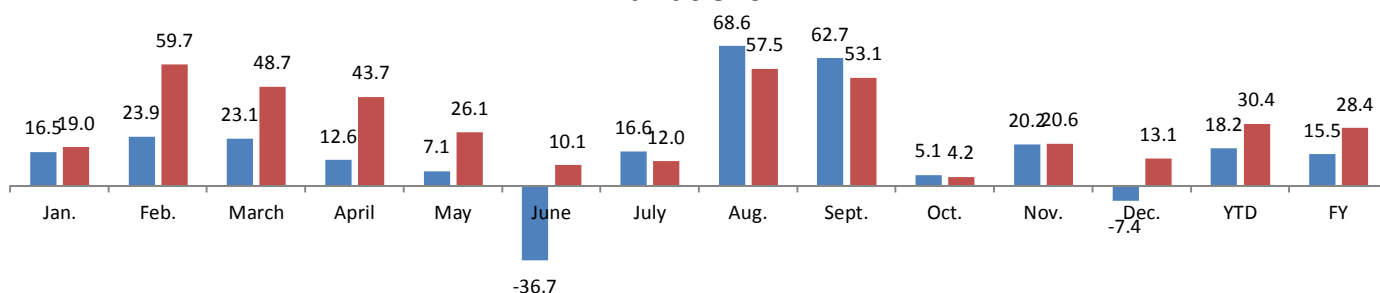


Data processing and forecast by CORAM

CORAM

	Jan.	Feb.	March	April	May	June	July	Aug.	Sept.	Oct.	Nov.	Dec.	YTD	FY
2015	860	689	766	806	877	910	1,037	764	972	942	1,156	1,287	9,779	11,066
2016	1,023	1,100	1,139	1,158	1,106	1,002	1,161	1,203	1,488	982	1,394	1,456	12,756	14,212
YTY (%)	19.0	59.7	48.7	43.7	26.1	10.1	12.0	57.5	53.1	4.2	20.6	13.1	30.4	28.4

YTY variations



Data source: ACEA. Data processing and forecast by CORAM.

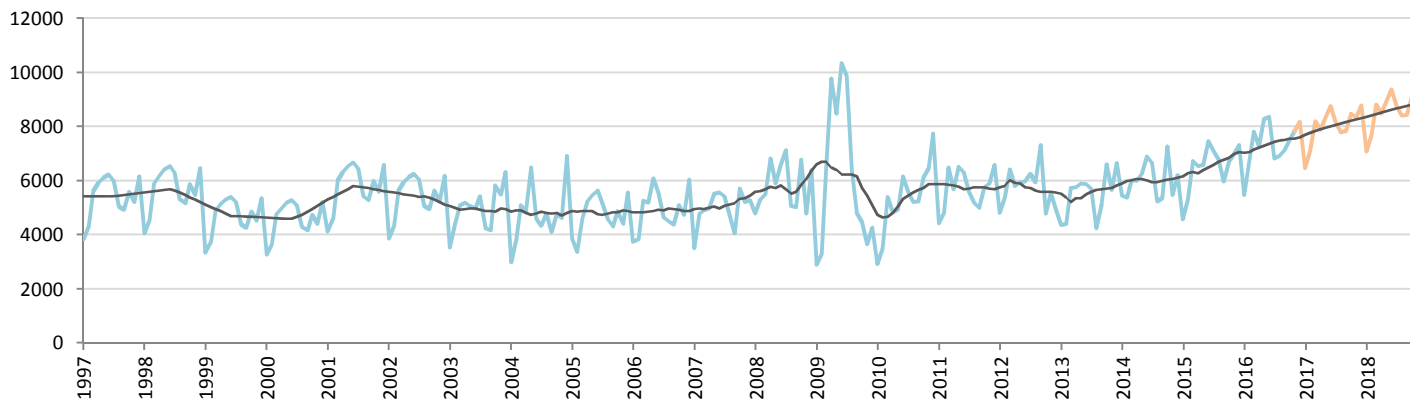
Car Sales Forecast : SLOVAKIA November 2016

Total	Jan.	Feb.	March	April	May	June	July	Aug.	Sept.	Oct.	Nov.	Dec.	YTD	FY
2015	4,975	5,760	7,308	7,180	7,140	8,022	7,651	7,303	6,608	7,462	7,845	8,036	77,254	85,290
2016	5,978	7,313	8,526	7,893	9,034	9,062	7,285	7,830	7,551	8,101	8,423	8,894	86,996	95,890
YTY (%)	20.2	27.0	16.7	9.9	26.5	13.0	-4.8	7.2	14.3	8.6	7.4	10.7	12.6	12.4

Comment: In November the car sales increase by 7,4%. 2016 forecast is an increase of 12,4%.

Trend FY 2017 : 103,000 7.4

Car Sales Forecast : SLOVAKIA November 2016 - Car

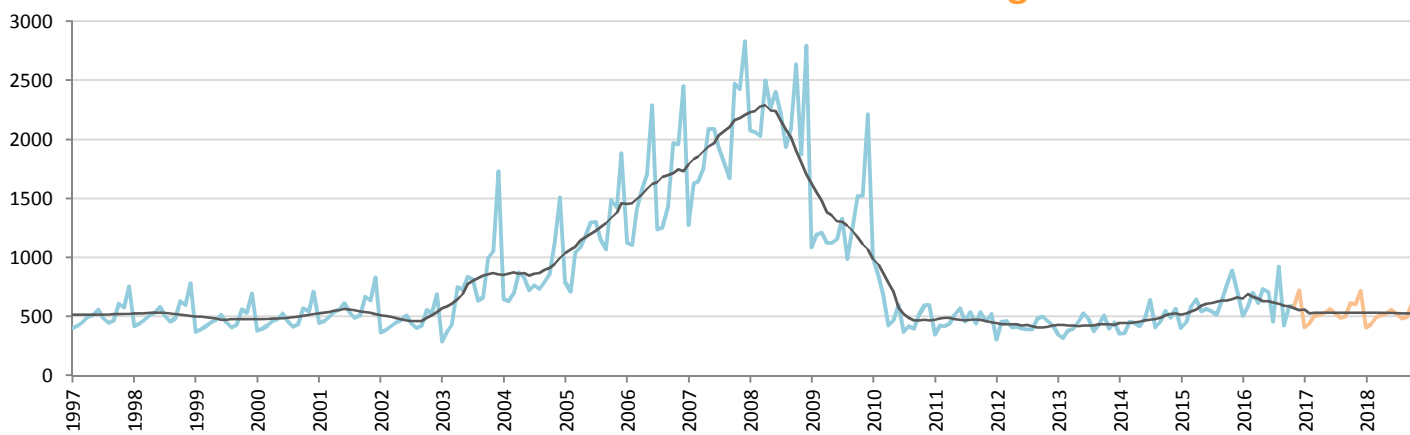


Data processing and forecast by CORAM

CORAM

	Jan.	Feb.	March	April	May	June	July	Aug.	Sept.	Oct.	Nov.	Dec.	YTD	FY
2015	4,572	5,303	6,718	6,532	6,594	7,454	7,106	6,785	5,969	6,691	6,953	7,316	70,677	77,993
2016	5,473	6,728	7,823	7,279	8,299	8,354	6,826	6,906	7,126	7,511	7,830	8,170	80,155	88,325
YTY (%)	19.7	26.9	16.4	11.4	25.9	12.1	-3.9	1.8	19.4	12.3	12.6	11.7	13.4	13.2

Car Sales Forecast : SLOVAKIA November 2016 - Light Com. Veh.

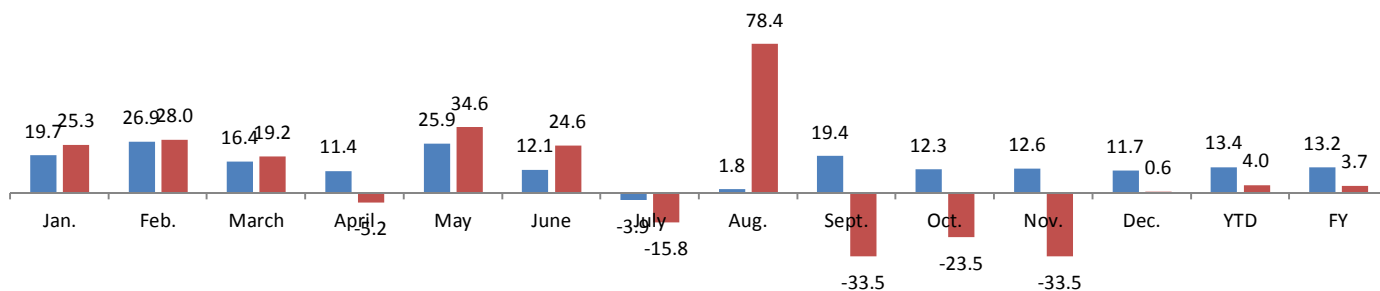


Data processing and forecast by CORAM

CORAM

	Jan.	Feb.	March	April	May	June	July	Aug.	Sept.	Oct.	Nov.	Dec.	YTD	FY
2015	403	457	590	648	546	568	545	518	639	771	892	720	6,577	7,297
2016	505	585	703	614	735	708	459	924	425	590	593	725	6,841	7,566
YTY (%)	25.3	28.0	19.2	-5.2	34.6	24.6	-15.8	78.4	-33.5	-23.5	-33.5	0.6	4.0	3.7

YTY variations



Data source: ACEA. Data processing and forecast by CORAM.

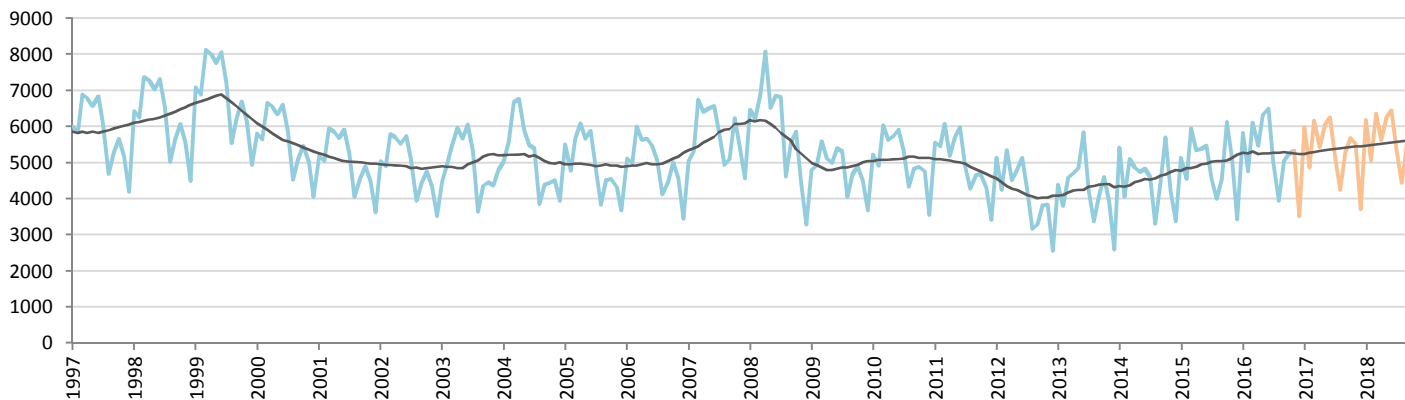
Car Sales Forecast : SLOVENIA November 2016

Total	Jan.	Feb.	March	April	May	June	July	Aug.	Sept.	Oct.	Nov.	Dec.	YTD	FY
2015	5,685	5,003	6,660	5,976	5,963	6,149	5,238	4,387	5,163	6,792	5,817	4,213	62,833	67,046
2016	6,710	5,510	6,971	6,326	7,101	7,315	5,794	4,579	5,814	6,005	6,402	4,398	68,527	72,925
YTY (%)	18.0	10.1	4.7	5.9	19.1	19.0	10.6	4.4	12.6	-11.6	10.1	4.4	9.1	8.8

Comment: In November the car sales increase by 10,1%. 2016 forecast is an increase of 8,8%.

Trend FY 2017 : 75,200 3.1

Car Sales Forecast : SLOVENIA November 2016 - Car

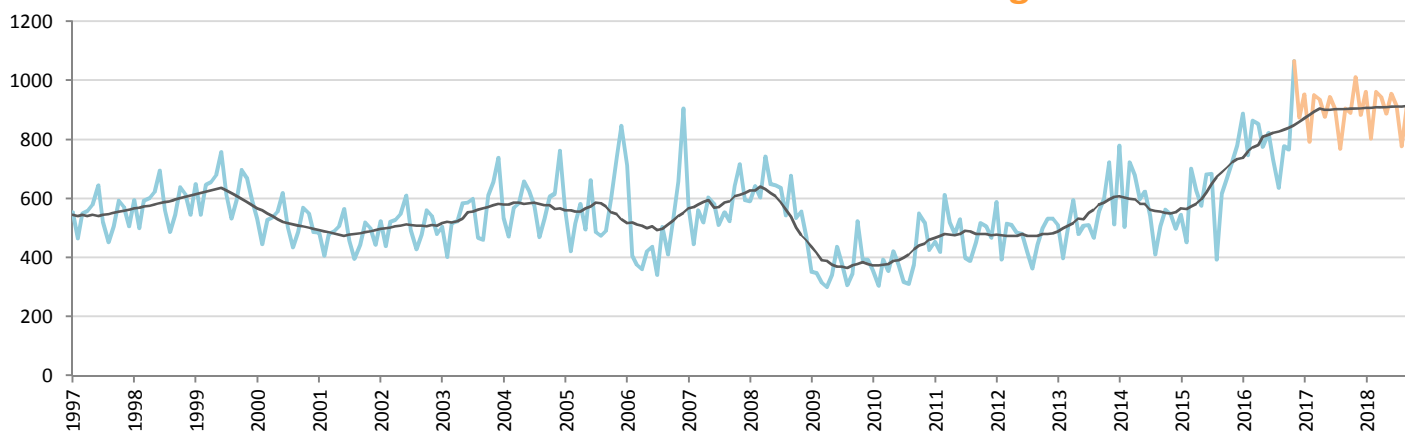


Data processing and forecast by CORAM

CORAM

	Jan.	Feb.	March	April	May	June	July	Aug.	Sept.	Oct.	Nov.	Dec.	YTD	FY
2015	5,139	4,550	5,958	5,348	5,388	5,467	4,554	3,993	4,546	6,123	5,095	3,433	56,161	59,594
2016	5,823	4,762	6,106	5,472	6,325	6,492	5,062	3,942	5,036	5,239	5,337	3,524	59,596	63,120
YTY (%)	13.3	4.7	2.5	2.3	17.4	18.7	11.2	-1.3	10.8	-14.4	4.7	2.6	6.1	5.9

Car Sales Forecast : SLOVENIA November 2016 - Light Com. Veh.

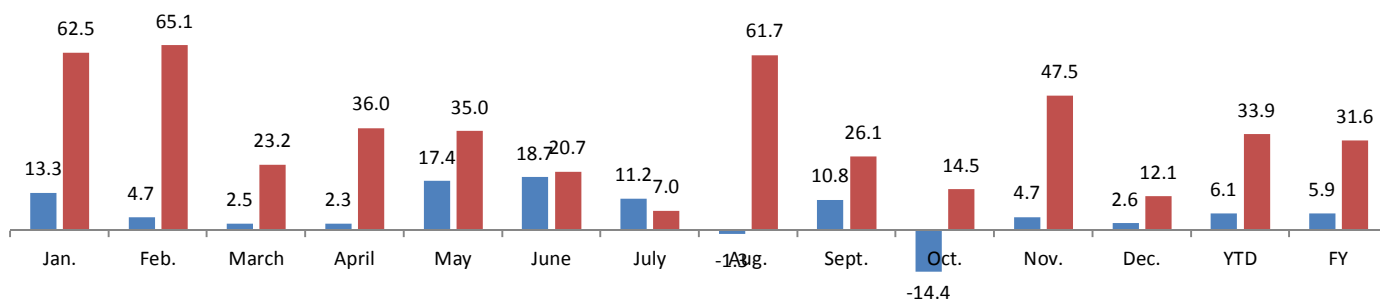


Data processing and forecast by CORAM

CORAM

	Jan.	Feb.	March	April	May	June	July	Aug.	Sept.	Oct.	Nov.	Dec.	YTD	FY
2015	546	453	702	628	575	682	684	394	617	669	722	780	6,672	7,452
2016	887	748	865	854	776	823	732	637	778	766	1,065	874	8,931	9,805
YTY (%)	62.5	65.1	23.2	36.0	35.0	20.7	7.0	61.7	26.1	14.5	47.5	12.1	33.9	31.6

YTY variations



Data source: ACEA. Data processing and forecast by CORAM.

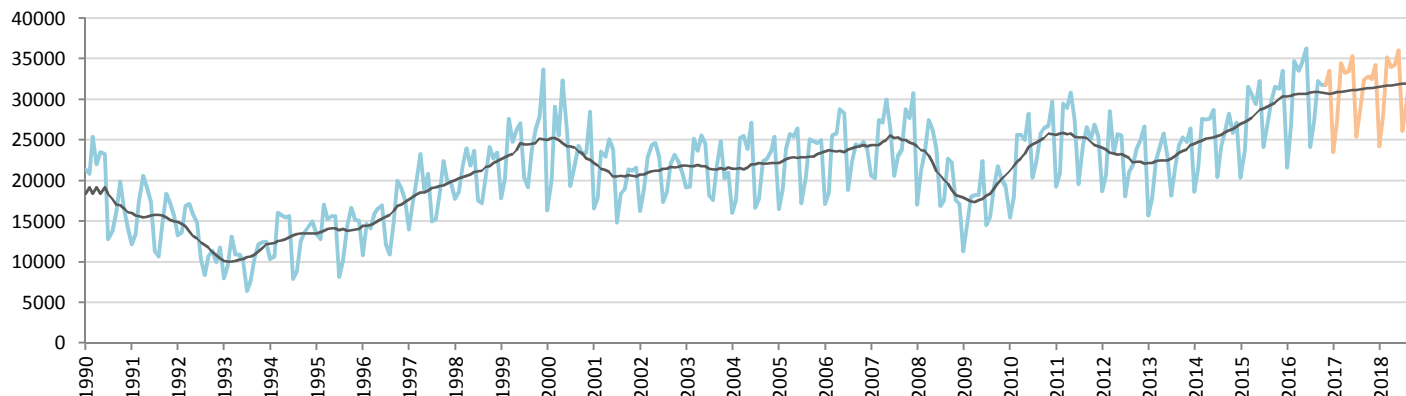
Car Sales Forecast : SWEDEN November 2016

Total	Jan.	Feb.	March	April	May	June	July	Aug.	Sept.	Oct.	Nov.	Dec.	YTD	FY
2015	22,921	27,058	35,835	34,911	33,353	36,265	26,412	30,425	33,707	35,862	35,116	38,041	351,865	389,906
2016	24,451	31,079	39,404	38,304	38,838	40,996	26,953	32,557	36,946	35,830	36,228	38,505	381,586	420,091
YTY (%)	6.7	14.9	10.0	9.7	16.4	13.0	2.0	7.0	9.6	-0.1	3.2	1.2	8.4	7.7

Comment: In November the car sales increase by 3,2%. 2016 forecast is an increase of 7,7%.

Trend FY 2017 : 427,000 1.6

Car Sales Forecast : SWEDEN November 2016 - Car

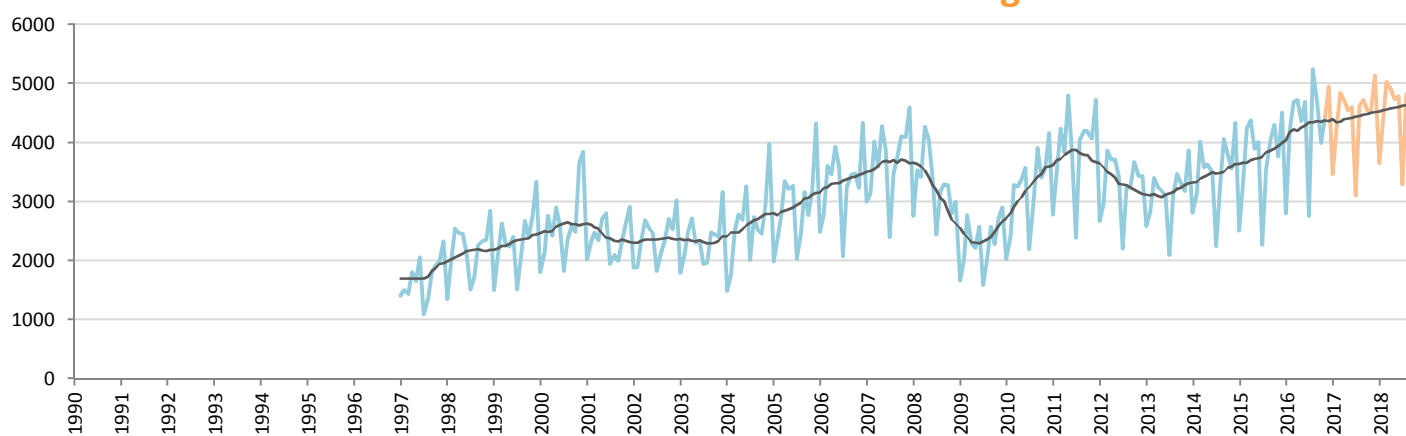


Data processing and forecast by CORAM

CORAM

	Jan.	Feb.	March	April	May	June	July	Aug.	Sept.	Oct.	Nov.	Dec.	YTD	FY
2015	20,408	23,735	31,590	30,536	29,458	32,257	24,139	26,877	29,653	31,563	31,352	33,540	311,568	345,108
2016	21,648	26,869	34,712	33,580	34,475	36,307	24,197	27,316	32,292	31,840	31,801	33,558	335,037	368,595
YTY (%)	6.1	13.2	9.9	10.0	17.0	12.6	0.2	1.6	8.9	0.9	1.4	0.1	7.5	6.8

Car Sales Forecast : SWEDEN November 2016 - Light Com. Veh.

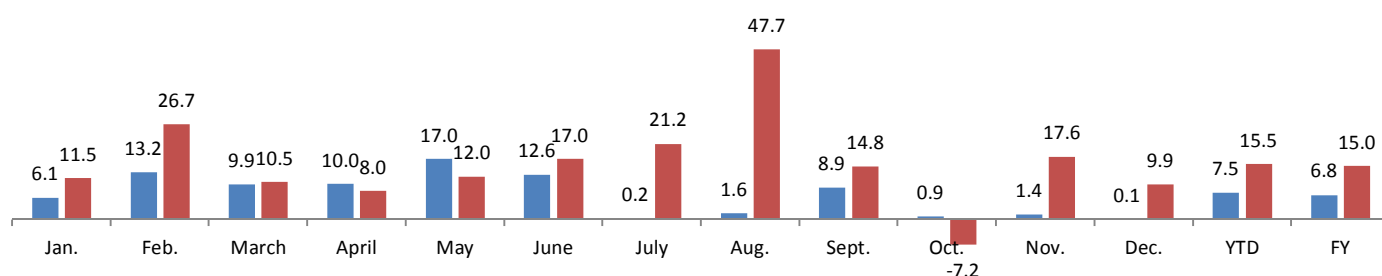


Data processing and forecast by CORAM

CORAM

	Jan.	Feb.	March	April	May	June	July	Aug.	Sept.	Oct.	Nov.	Dec.	YTD	FY
2015	2,513	3,323	4,245	4,375	3,895	4,008	2,273	3,548	4,054	4,299	3,764	4,501	40,297	44,798
2016	2,803	4,210	4,692	4,724	4,363	4,689	2,756	5,241	4,654	3,990	4,427	4,947	46,549	51,496
YTY (%)	11.5	26.7	10.5	8.0	12.0	17.0	21.2	47.7	14.8	-7.2	17.6	9.9	15.5	15.0

YTY variations



Data source: ACEA. Data processing and forecast by CORAM.