

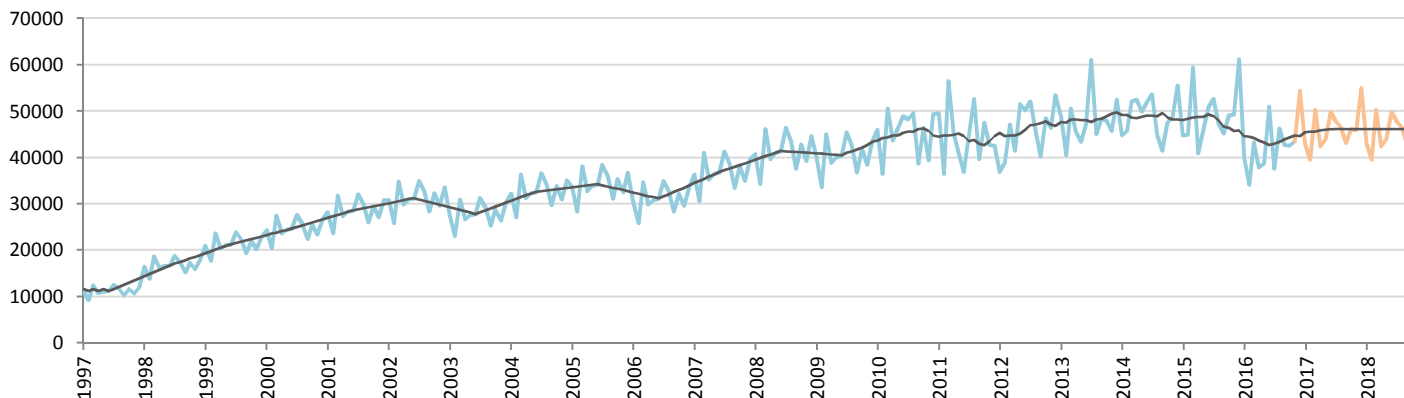
Car Sales Forecast : MALAYSIA November 2016

Total	Jan.	Feb.	March	April	May	June	July	Aug.	Sept.	Oct.	Nov.	Dec.	YTD	FY
2015	50,602	50,390	66,115	45,187	51,254	57,437	58,646	53,462	51,106	55,754	56,092	69,401	596,045	665,446
2016	44,591	37,876	48,800	42,177	44,669	57,358	42,471	52,312	48,191	47,879	49,085	61,003	515,409	576,412
YTY (%)	-11.9	-24.8	-26.2	-6.7	-12.8	-0.1	-27.6	-2.2	-5.7	-14.1	-12.5	-12.1	-13.5	-13.4

Comment: In November the car sales decrease by 12,5%. 2016 forecast is a decrease of 13,4%.

Trend FY 2017 : 618,000 7.2

Car Sales Forecast : MALAYSIA November 2016 - Car

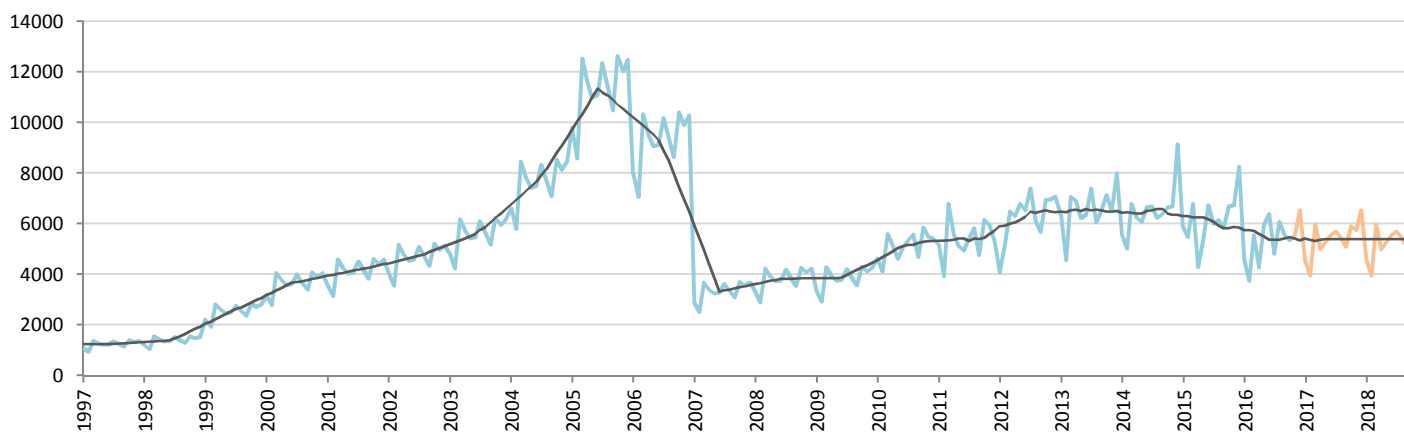


Data processing and forecast by CORAM

CORAM

	Jan.	Feb.	March	April	May	June	July	Aug.	Sept.	Oct.	Nov.	Dec.	YTD	FY
2015	44,697	44,917	59,318	40,902	45,874	50,695	52,636	47,302	45,245	49,063	49,348	61,132	529,997	591,129
2016	40,000	34,126	43,247	37,893	38,699	50,981	37,647	46,223	42,644	42,522	43,550	54,456	457,532	511,988
YTY (%)	-10.5	-24.0	-27.1	-7.4	-15.6	0.6	-28.5	-2.3	-5.7	-13.3	-11.7	-10.9	-13.7	-13.4

Car Sales Forecast : MALAYSIA November 2016 - Commercial Veh.

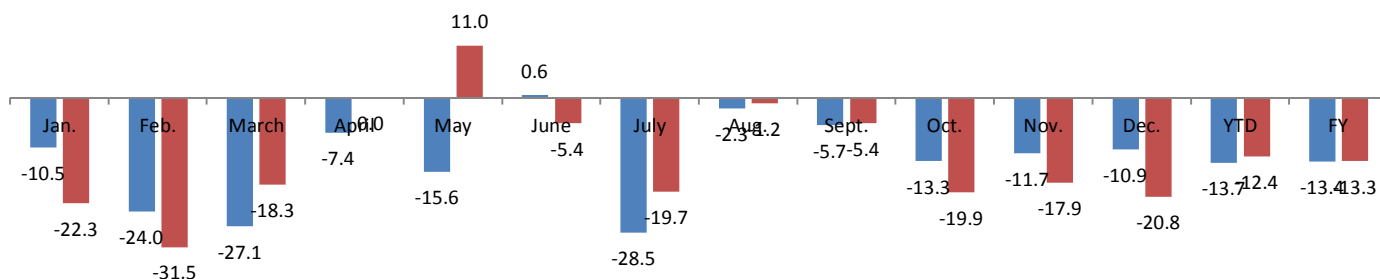


Data processing and forecast by CORAM

CORAM

	Jan.	Feb.	March	April	May	June	July	Aug.	Sept.	Oct.	Nov.	Dec.	YTD	FY
2015	5,905	5,473	6,797	4,285	5,380	6,742	6,010	6,160	5,861	6,691	6,744	8,269	66,048	74,317
2016	4,591	3,750	5,553	4,284	5,970	6,377	4,824	6,089	5,547	5,357	5,535	6,547	57,877	64,424
YTY (%)	-22.3	-31.5	-18.3	0.0	11.0	-5.4	-19.7	-1.2	-5.4	-19.9	-17.9	-20.8	-12.4	-13.3

YTY variations



Data source: MAA. Data processing and forecast by CORAM.