

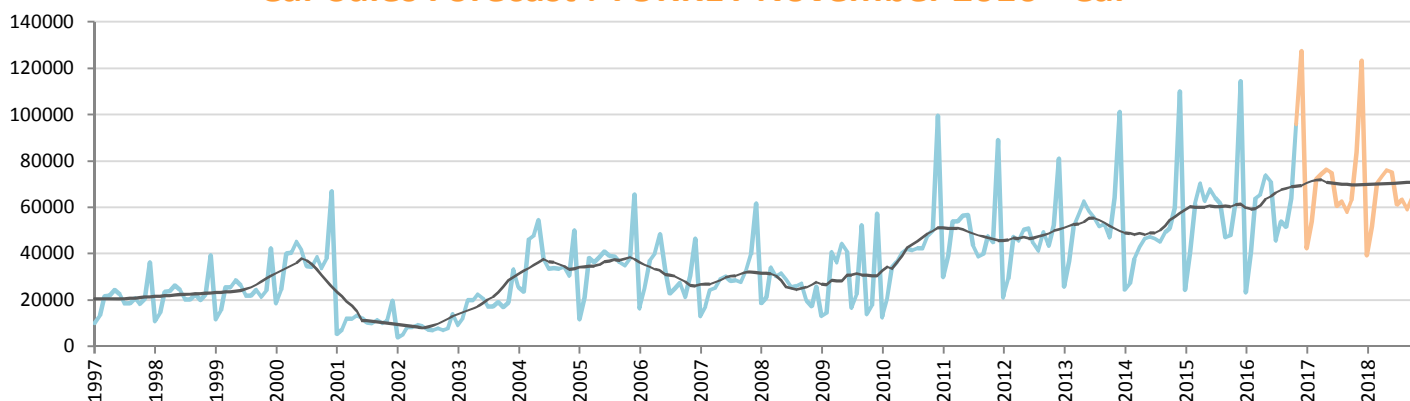
# Car Sales Forecast : TURKEY November 2016

Total	Jan.	Feb.	March	April	May	June	July	Aug.	Sept.	Oct.	Nov.	Dec.	YTD	FY
2015	34,615	55,331	83,302	91,602	81,542	86,158	83,836	82,577	64,025	64,255	84,601	156,173	811,844	968,017
2016	32,703	52,825	82,948	84,887	93,904	91,540	58,533	71,556	67,593	83,000	122,309	164,680	841,798	1,006,478
YTY (%)	-5.5	-4.5	-0.4	-7.3	15.2	6.2	-30.2	-13.3	5.6	29.2	44.6	5.4	3.7	4.0

Comment: In November the car sales increase by 44,6%. 2016 forecast is an increase of 4%.

Trend FY 2017 : 1,080,000 7.3

## Car Sales Forecast : TURKEY November 2016 - Car

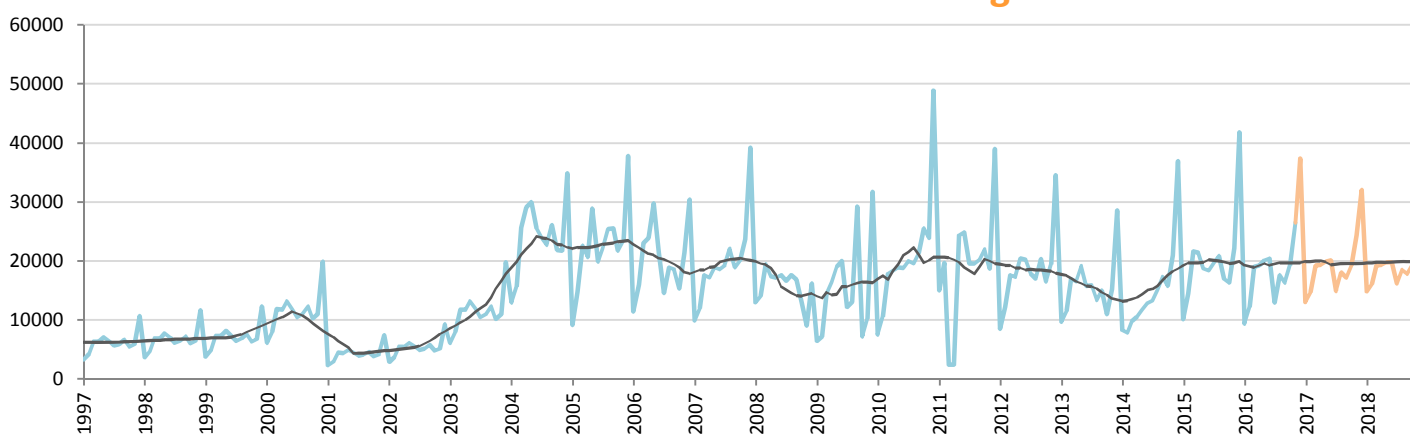


Data processing and forecast by CORAM

CORAM

	Jan.	Feb.	March	April	May	June	July	Aug.	Sept.	Oct.	Nov.	Dec.	YTD	FY
2015	24,498	40,817	61,676	70,211	62,878	67,766	64,218	61,753	47,088	47,954	62,397	114,340	611,256	725,596
2016	23,348	40,588	63,975	65,618	73,832	71,111	45,566	53,977	51,340	63,746	95,783	127,315	648,884	776,199
YTY (%)	-4.7	-0.6	3.7	-6.5	17.4	4.9	-29.0	-12.6	9.0	32.9	53.5	11.3	6.2	7.0

## Car Sales Forecast : TURKEY November 2016 - Light Com. Veh.

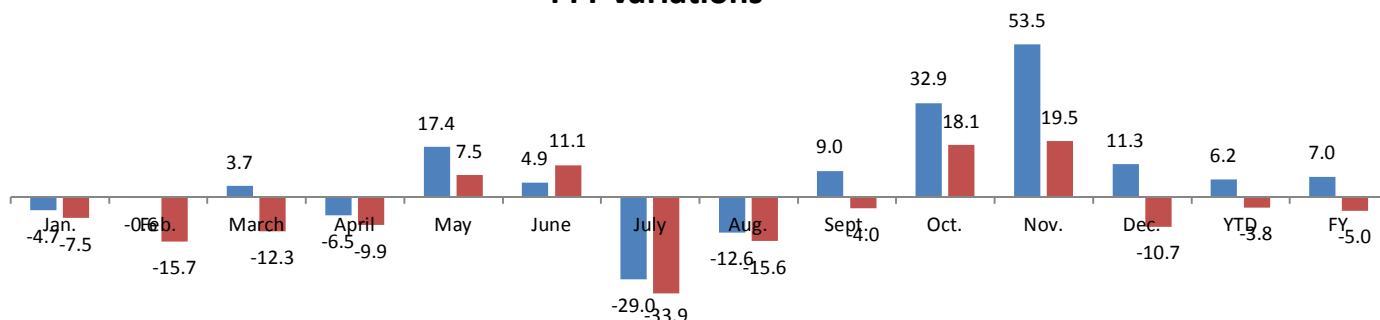


Data processing and forecast by CORAM

CORAM

	Jan.	Feb.	March	April	May	June	July	Aug.	Sept.	Oct.	Nov.	Dec.	YTD	FY
2015	10,117	14,514	21,626	21,391	18,664	18,392	19,618	20,824	16,937	16,301	22,204	41,833	200,588	242,421
2016	9,355	12,237	18,973	19,269	20,072	20,429	12,967	17,579	16,253	19,254	26,526	37,365	192,914	230,279
YTY (%)	-7.5	-15.7	-12.3	-9.9	7.5	11.1	-33.9	-15.6	-4.0	18.1	19.5	-10.7	-3.8	-5.0

## YTY variations



Data source: OSD. Data processing and forecast by CORAM.