

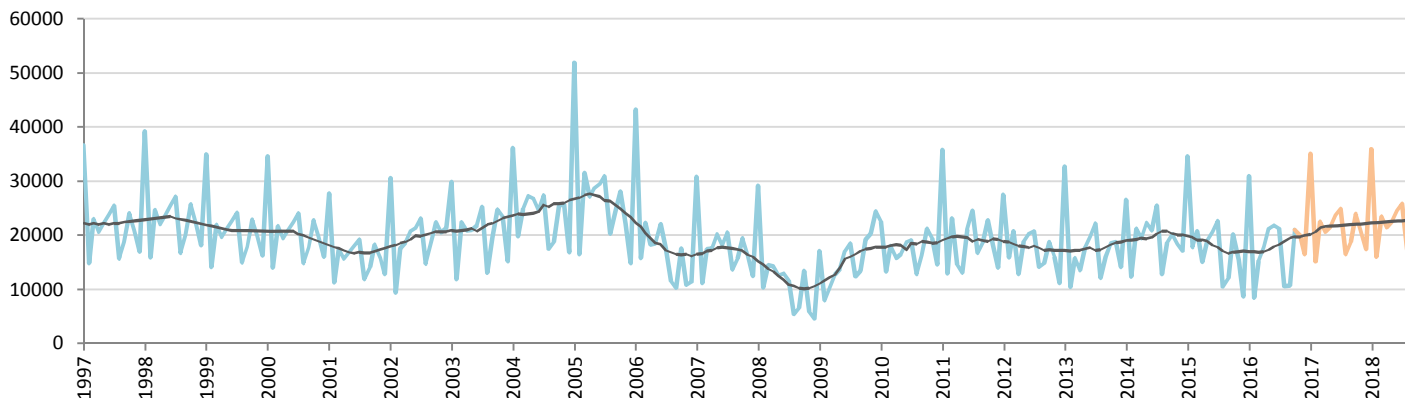
Car Sales Forecast : TAIWAN October 2016

Total	Jan.	Feb.	March	April	May	June	July	Aug.	Sept.	Oct.	Nov.	Dec.	YTD	FY
2015	40,472	20,936	25,532	19,100	23,496	25,148	26,877	13,035	15,688	24,380	18,540	11,403	234,664	264,607
2016	38,182	11,730	20,079	22,712	26,649	27,344	25,647	13,722	14,761	24,161	23,944	20,134	224,987	269,064
YTY (%)	-5.7	-44.0	-21.4	18.9	13.4	8.7	-4.6	5.3	-5.9	-0.9	29.1	76.6	-4.1	1.7

Comment: In October the car sales decrease by 0,9%. 2016 forecast is an increase of 1,7%.

Trend FY 2017 : 310,000 15.2

Car Sales Forecast : TAIWAN October 2016 - Car

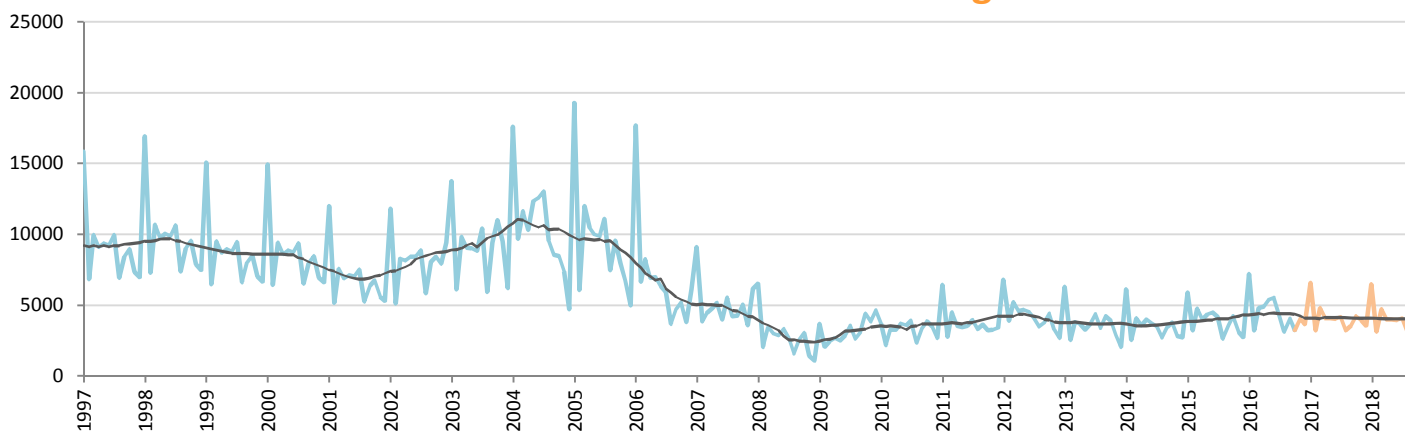


Data processing and forecast by CORAM

CORAM

	Jan.	Feb.	March	April	May	June	July	Aug.	Sept.	Oct.	Nov.	Dec.	YTD	FY
2015	34,600	17,734	20,770	15,091	19,121	20,646	22,688	10,412	12,124	20,172	15,456	8,694	193,358	217,508
2016	30,968	8,493	15,260	17,817	21,254	21,818	21,280	10,578	10,742	20,927	19,902	16,503	179,137	215,542
YTY (%)	-10.5	-52.1	-26.5	18.1	11.2	5.7	-6.2	1.6	-11.4	3.7	28.8	89.8	-7.4	-0.9

Car Sales Forecast : TAIWAN October 2016 - Light Com. Veh.

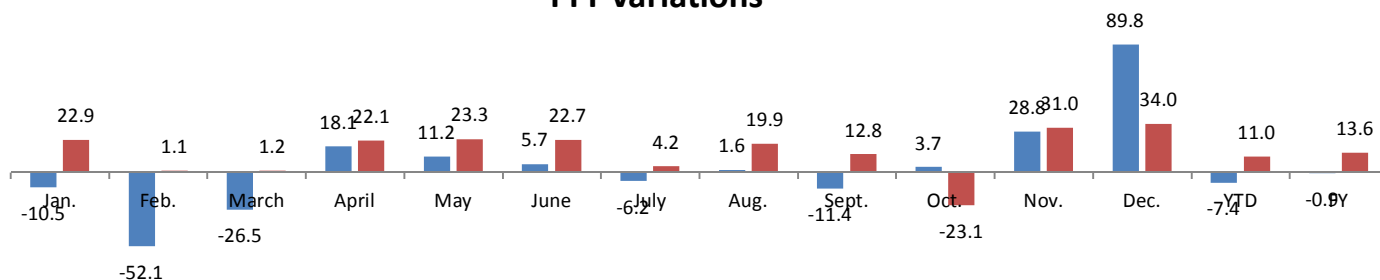


Data processing and forecast by CORAM

CORAM

	Jan.	Feb.	March	April	May	June	July	Aug.	Sept.	Oct.	Nov.	Dec.	YTD	FY
2015	5,872	3,202	4,762	4,009	4,375	4,502	4,189	2,623	3,564	4,208	3,084	2,709	41,306	47,099
2016	7,214	3,237	4,819	4,895	5,395	5,526	4,367	3,144	4,019	3,234	4,042	3,631	45,850	53,523
YTY (%)	22.9	1.1	1.2	22.1	23.3	22.7	4.2	19.9	12.8	-23.1	31.0	34.0	11.0	13.6

YTY variations



Data source: TTVMA. Local manufacturers only. Data processing and forecast by CORAM.