

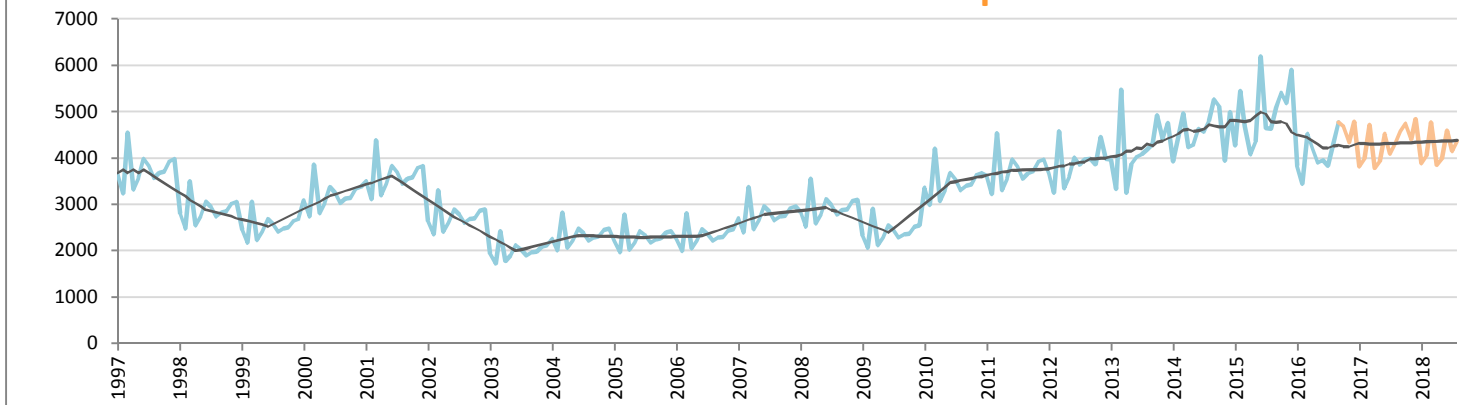
# Car Sales Forecast : HONG KONG Sept. 2016

| Total   | Jan.  | Feb.  | March | April | May   | June  | July  | Aug.  | Sept. | Oct.  | Nov.  | Dec.  | YTD    | FY     |
|---------|-------|-------|-------|-------|-------|-------|-------|-------|-------|-------|-------|-------|--------|--------|
| 2015    | 4,275 | 5,441 | 4,683 | 4,081 | 4,346 | 6,187 | 4,638 | 4,629 | 5,080 | 5,401 | 5,185 | 5,893 | 43,360 | 59,839 |
| 2016    | 3,823 | 3,438 | 4,518 | 4,186 | 3,903 | 3,957 | 3,828 | 4,283 | 4,770 | 4,685 | 4,335 | 4,780 | 36,706 | 50,507 |
| YTY (%) | -10.6 | -36.8 | -3.5  | 2.6   | -10.2 | -36.0 | -17.5 | -7.5  | -6.1  | -13.3 | -16.4 | -18.9 | -15.3  | -15.6  |

Comment: In Sept. the car sales decrease by 6,1%. 2016 forecast is a decrease of 15,6%.

Trend FY 2017 : 51,700 2.4

## Car Sales Forecast : HONG KONG Sept. 2016

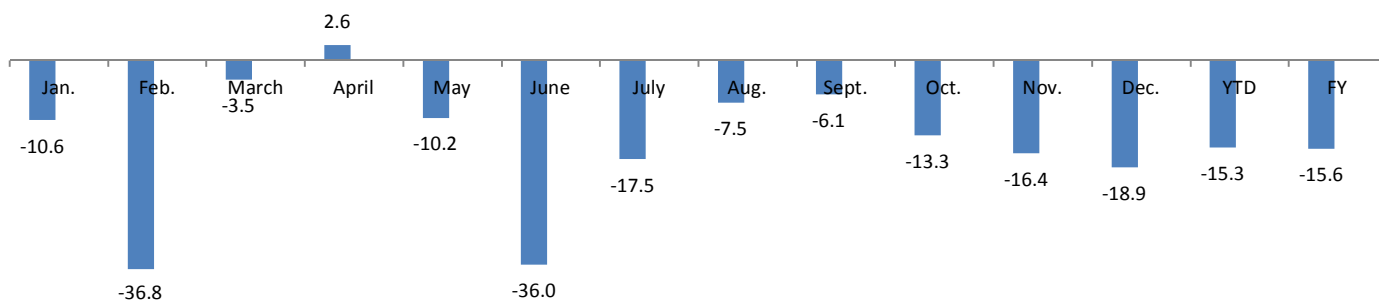


Data processing and forecast by CORAM

CORAM

|         | Jan.  | Feb.  | March | April | May   | June  | July  | Aug.  | Sept. | Oct.  | Nov.  | Dec.  | YTD    | FY     |
|---------|-------|-------|-------|-------|-------|-------|-------|-------|-------|-------|-------|-------|--------|--------|
| 2015    | 4,275 | 5,441 | 4,683 | 4,081 | 4,346 | 6,187 | 4,638 | 4,629 | 5,080 | 5,401 | 5,185 | 5,893 | 43,360 | 59,839 |
| 2016    | 3,823 | 3,438 | 4,518 | 4,186 | 3,903 | 3,957 | 3,828 | 4,283 | 4,770 | 4,685 | 4,335 | 4,780 | 36,706 | 50,507 |
| YTY (%) | -10.6 | -36.8 | -3.5  | 2.6   | -10.2 | -36.0 | -17.5 | -7.5  | -6.1  | -13.3 | -16.4 | -18.9 | -15.3  | -15.6  |

## YTY variations



Data source: CSD. Data processing and forecast by CORAM.