

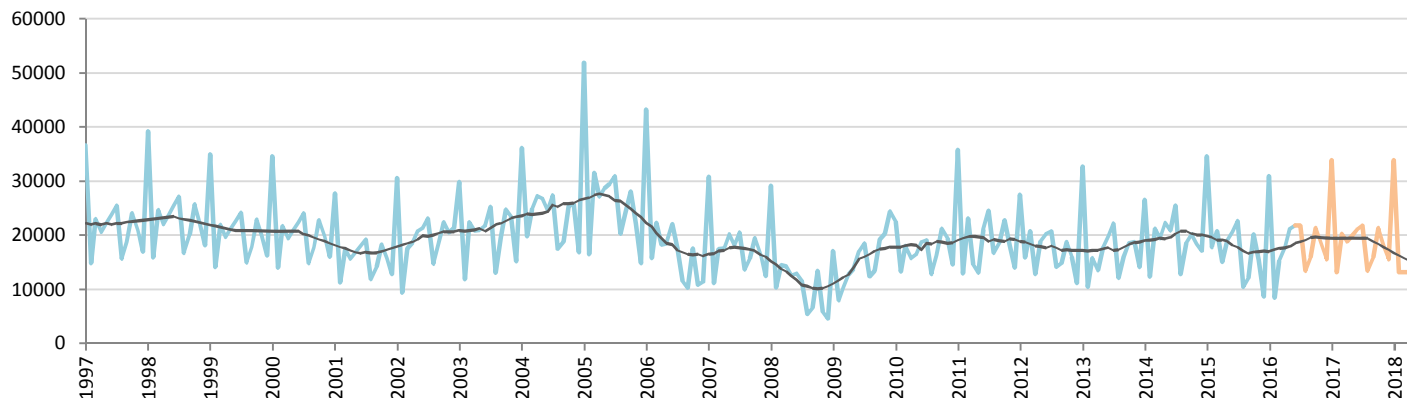
Car Sales Forecast : TAIWAN June 2016

Total	Jan.	Feb.	March	April	May	June	July	Aug.	Sept.	Oct.	Nov.	Dec.	YTD	FY
2015	40,472	20,936	25,532	19,100	23,496	25,148	26,877	13,035	15,688	24,380	18,540	11,403	154,684	264,607
2016	38,182	11,730	20,079	22,712	26,649	27,344	25,508	15,625	18,907	24,844	21,518	18,394	146,696	271,492
YTY (%)	-5.7	-44.0	-21.4	18.9	13.4	8.7	-5.1	19.9	20.5	1.9	16.1	61.3	-5.2	2.6

Comment: In June the car sales increase by 8,7%. 2016 forecast is an increase of 2,6%.

Trend FY 2017 : 271,000 -0.2

Car Sales Forecast : TAIWAN June 2016 - Car

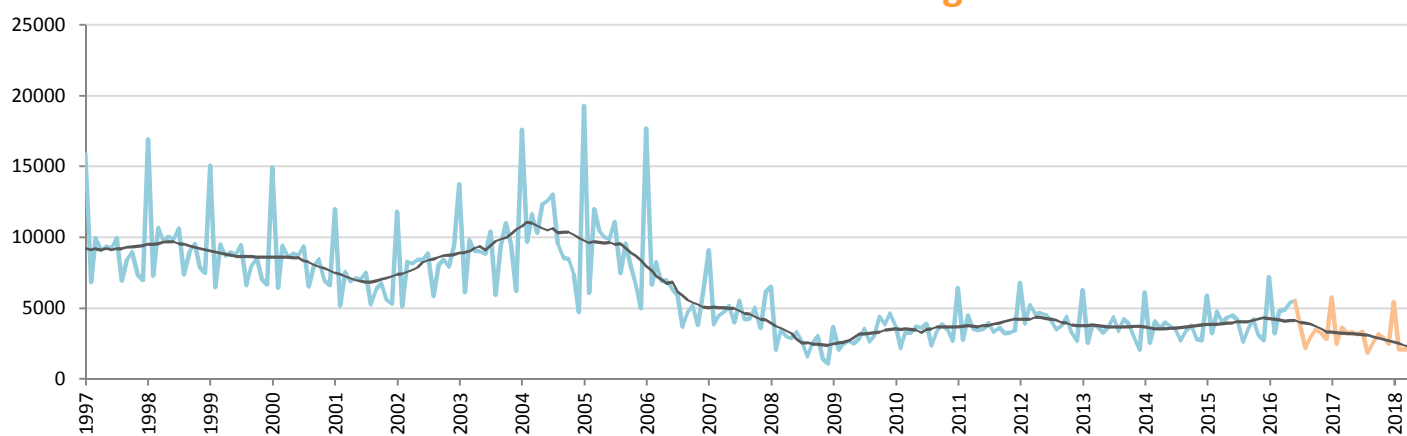


Data processing and forecast by CORAM

CORAM

	Jan.	Feb.	March	April	May	June	July	Aug.	Sept.	Oct.	Nov.	Dec.	YTD	FY
2015	34,600	17,734	20,770	15,091	19,121	20,646	22,688	10,412	12,124	20,172	15,456	8,694	127,962	217,508
2016	30,968	8,493	15,260	17,817	21,254	21,818	21,786	13,441	15,958	21,331	18,274	15,568	115,610	221,968
YTY (%)	-10.5	-52.1	-26.5	18.1	11.2	5.7	-4.0	29.1	31.6	5.7	18.2	79.1	-9.7	2.1

Car Sales Forecast : TAIWAN June 2016 - Light Com. Veh.

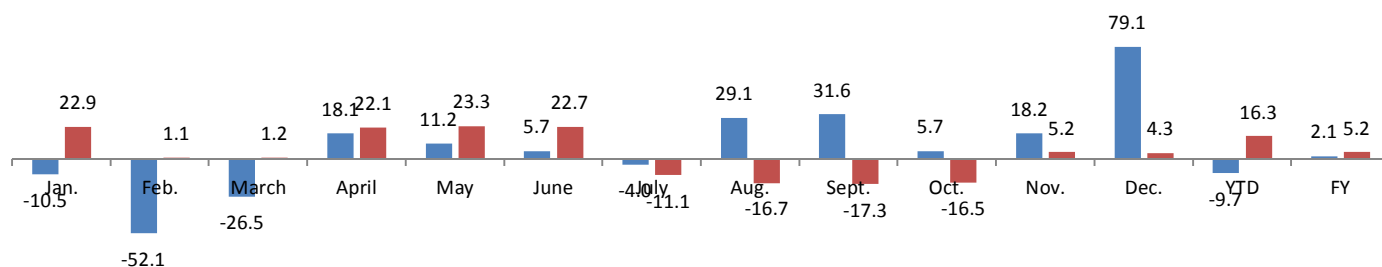


Data processing and forecast by CORAM

CORAM

	Jan.	Feb.	March	April	May	June	July	Aug.	Sept.	Oct.	Nov.	Dec.	YTD	FY
2015	5,872	3,202	4,762	4,009	4,375	4,502	4,189	2,623	3,564	4,208	3,084	2,709	26,722	47,099
2016	7,214	3,237	4,819	4,895	5,395	5,526	3,723	2,184	2,949	3,513	3,244	2,827	31,086	49,525
YTY (%)	22.9	1.1	1.2	22.1	23.3	22.7	-11.1	-16.7	-17.3	-16.5	5.2	4.3	16.3	5.2

YTY variations



Data source: TTVMA. Local manufacturers only. Data processing and forecast by CORAM.