

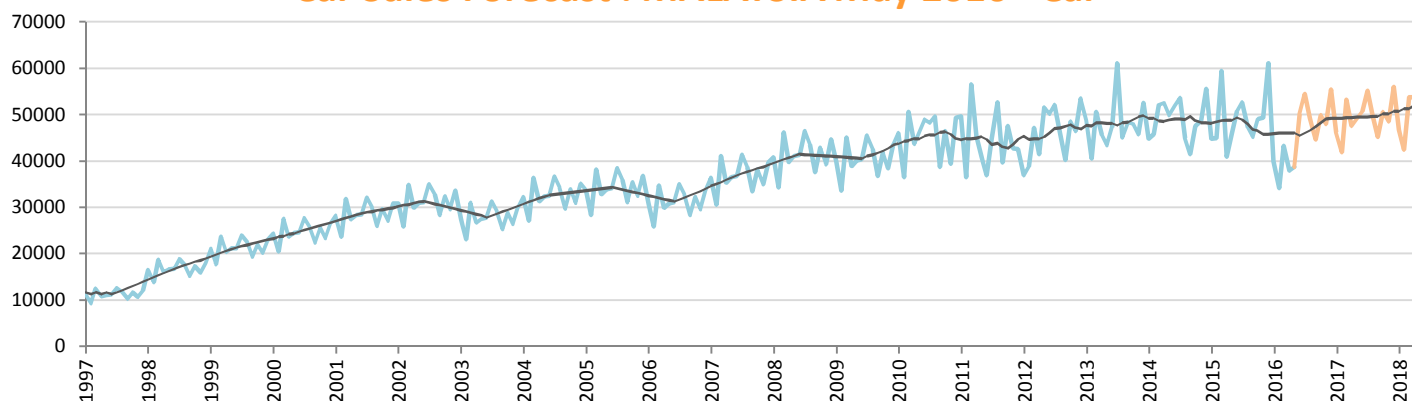
Car Sales Forecast : MALAYSIA May 2016

Total	Jan.	Feb.	March	April	May	June	July	Aug.	Sept.	Oct.	Nov.	Dec.	YTD	FY
2015	50,602	50,390	66,115	45,187	51,254	57,437	58,646	53,462	51,106	55,754	56,092	69,401	263,548	665,446
2016	44,591	37,876	48,800	42,177	44,669	55,729	60,388	54,709	49,792	55,887	53,667	61,919	218,113	610,205
YTY (%)	-11.9	-24.8	-26.2	-6.7	-12.8	-3.0	3.0	2.3	-2.6	0.2	-4.3	-10.8	-17.2	-8.3

Comment: In May the car sales decrease by 12,8%. 2016 forecast is a decrease of 8,3%.

Trend FY 2017 : 660,000 8.2

Car Sales Forecast : MALAYSIA May 2016 - Car

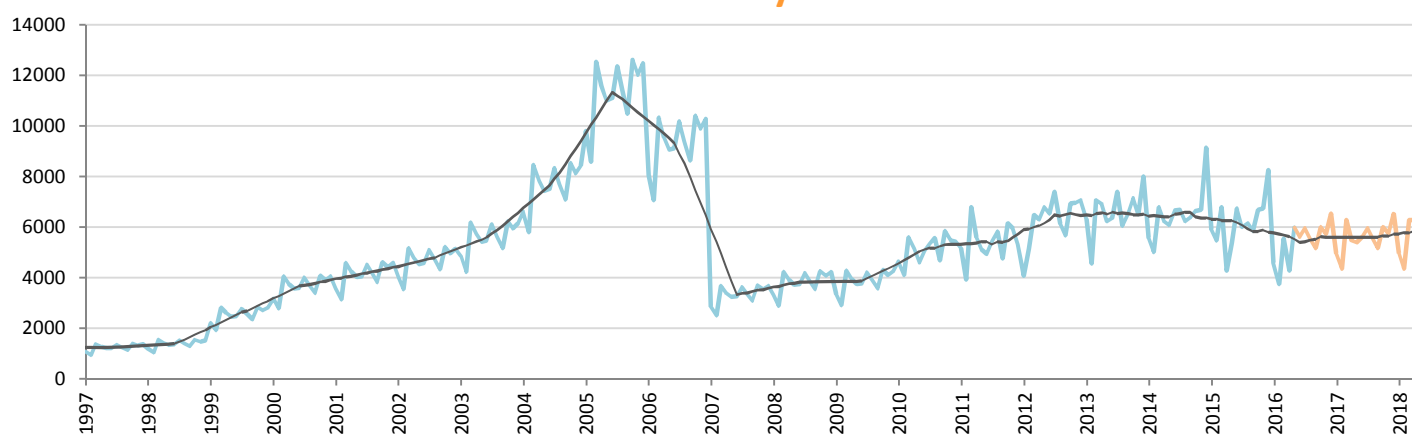


Data processing and forecast by CORAM

CORAM

	Jan.	Feb.	March	April	May	June	July	Aug.	Sept.	Oct.	Nov.	Dec.	YTD	FY
2015	44,697	44,917	59,318	40,902	45,874	50,695	52,636	47,302	45,245	49,063	49,348	61,132	235,708	591,129
2016	40,000	34,126	43,247	37,893	38,699	50,106	54,432	49,164	44,628	49,879	47,930	55,386	193,965	545,490
YTY (%)	-10.5	-24.0	-27.1	-7.4	-15.6	-1.2	3.4	3.9	-1.4	1.7	-2.9	-9.4	-17.7	-7.7

Car Sales Forecast : MALAYSIA May 2016 - Commercial Veh.

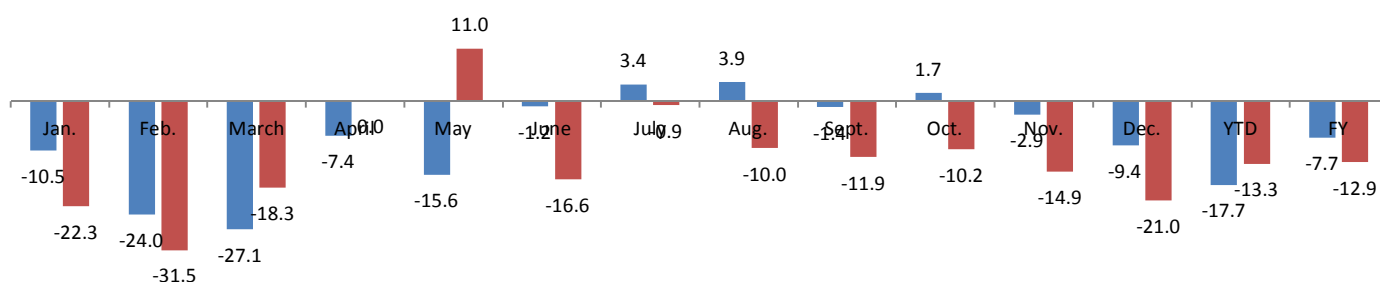


Data processing and forecast by CORAM

CORAM

	Jan.	Feb.	March	April	May	June	July	Aug.	Sept.	Oct.	Nov.	Dec.	YTD	FY
2015	5,905	5,473	6,797	4,285	5,380	6,742	6,010	6,160	5,861	6,691	6,744	8,269	27,840	74,317
2016	4,591	3,750	5,553	4,284	5,970	5,623	5,957	5,544	5,164	6,009	5,737	6,533	24,148	64,715
YTY (%)	-22.3	-31.5	-18.3	0.0	11.0	-16.6	-0.9	-10.0	-11.9	-10.2	-14.9	-21.0	-13.3	-12.9

YTY variations



Data source: MAA. Data processing and forecast by CORAM.