

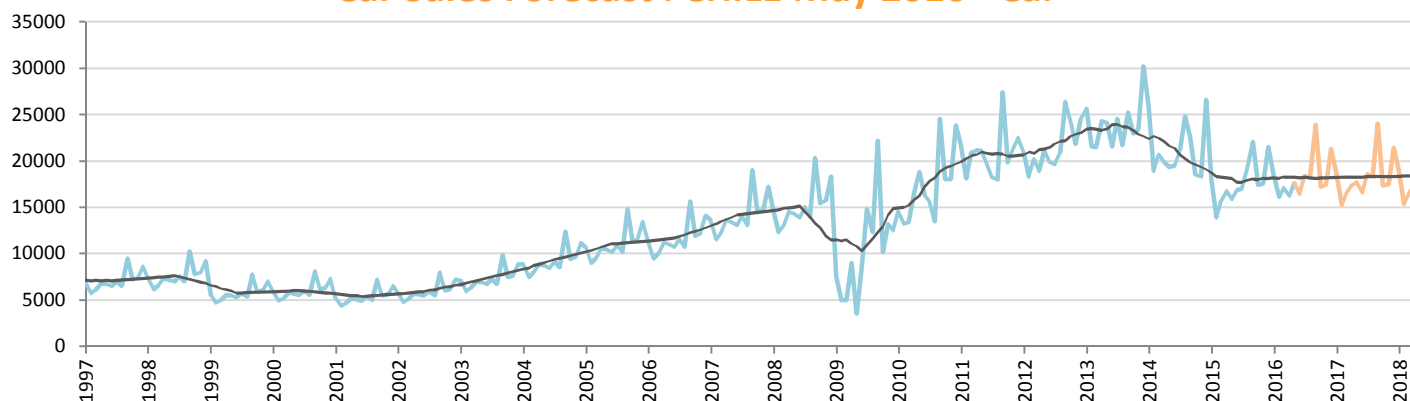
Car Sales Forecast : CHILE May 2016

Total	Jan.	Feb.	March	April	May	June	July	Aug.	Sept.	Oct.	Nov.	Dec.	YTD	FY
2015	23,891	18,233	21,469	23,084	21,184	22,632	22,247	24,373	28,668	22,887	23,727	29,837	107,861	282,232
2016	25,484	21,571	23,053	22,401	24,002	22,532	24,416	23,650	30,372	23,288	23,457	28,128	116,511	292,355
YTY (%)	6.7	18.3	7.4	-3.0	13.3	-0.4	9.7	-3.0	5.9	1.8	-1.1	-5.7	8.0	3.6

Comment: In May the car sales increase by 13,3%. 2016 forecast is an increase of 3,6%.

Trend FY 2017 : 293,000 0.2

Car Sales Forecast : CHILE May 2016 - Car

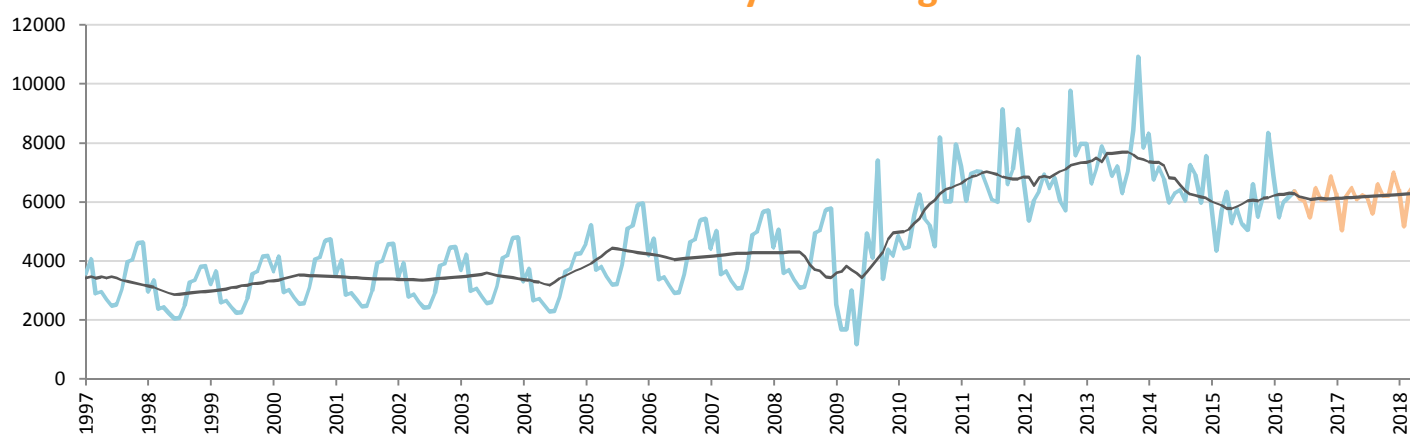


Data processing and forecast by CORAM

CORAM

	Jan.	Feb.	March	April	May	June	July	Aug.	Sept.	Oct.	Nov.	Dec.	YTD	FY
2015	18,024	13,897	15,777	16,739	15,898	16,831	16,995	19,331	22,070	17,386	17,577	21,498	80,335	212,023
2016	18,595	16,099	17,056	16,222	17,633	16,437	18,407	18,179	23,903	17,203	17,386	21,269	85,605	218,389
YTY (%)	3.2	15.8	8.1	-3.1	10.9	-2.3	8.3	-6.0	8.3	-1.1	-1.1	-1.1	6.6	3.0

Car Sales Forecast : CHILE May 2016 - Light Com. Veh.

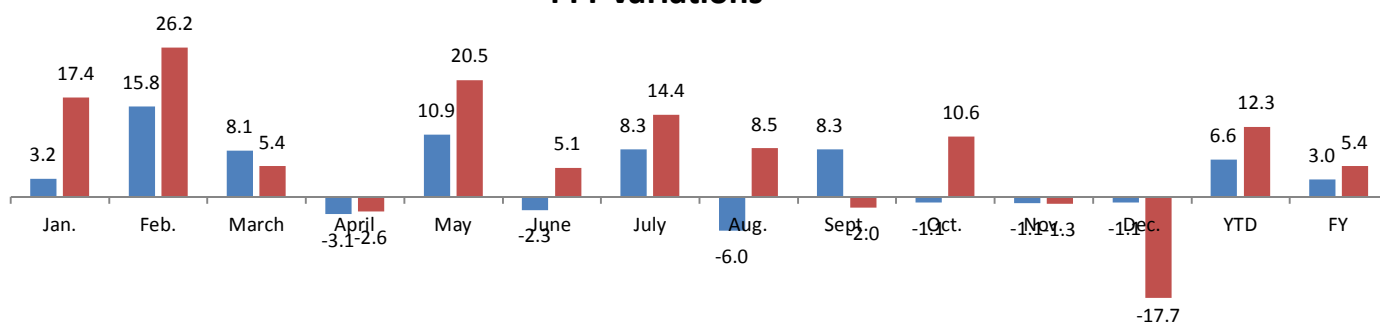


Data processing and forecast by CORAM

CORAM

	Jan.	Feb.	March	April	May	June	July	Aug.	Sept.	Oct.	Nov.	Dec.	YTD	FY
2015	5,867	4,336	5,692	6,345	5,286	5,801	5,252	5,042	6,598	5,501	6,150	8,339	27,526	70,209
2016	6,889	5,472	5,997	6,179	6,369	6,095	6,009	5,471	6,469	6,085	6,071	6,860	30,906	73,965
YTY (%)	17.4	26.2	5.4	-2.6	20.5	5.1	14.4	8.5	-2.0	10.6	-1.3	-17.7	12.3	5.4

YTY variations



Data source: ANAC. Data processing and forecast by CORAM.