

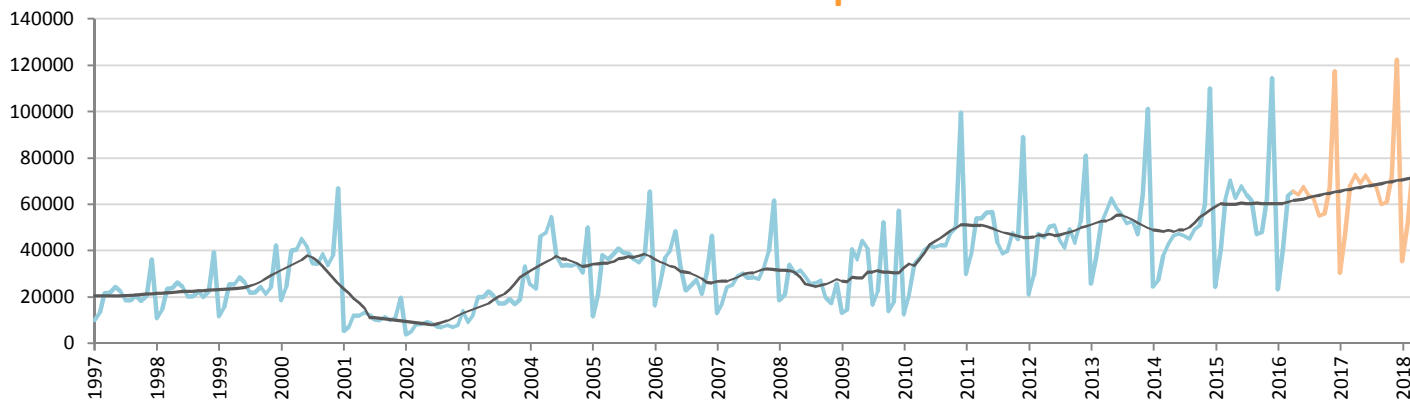
Car Sales Forecast : TURKEY April 2016

Total	Jan.	Feb.	March	April	May	June	July	Aug.	Sept.	Oct.	Nov.	Dec.	YTD	FY
2015	34,615	55,331	83,302	91,602	81,542	86,158	83,836	82,577	64,025	64,255	84,601	156,173	264,850	968,017
2016	32,703	52,825	82,948	84,887	87,011	87,801	82,037	81,393	76,526	73,357	87,225	153,107	253,363	981,822
YTY (%)	-5.5	-4.5	-0.4	-7.3	6.7	1.9	-2.1	-1.4	19.5	14.2	3.1	-2.0	-4.3	1.4

Comment: In April the car sales decrease by 7,3%. 2016 forecast is an increase of 1,4%.

Trend FY 2017 : 1,050,000 6.9

Car Sales Forecast : TURKEY April 2016 - Car

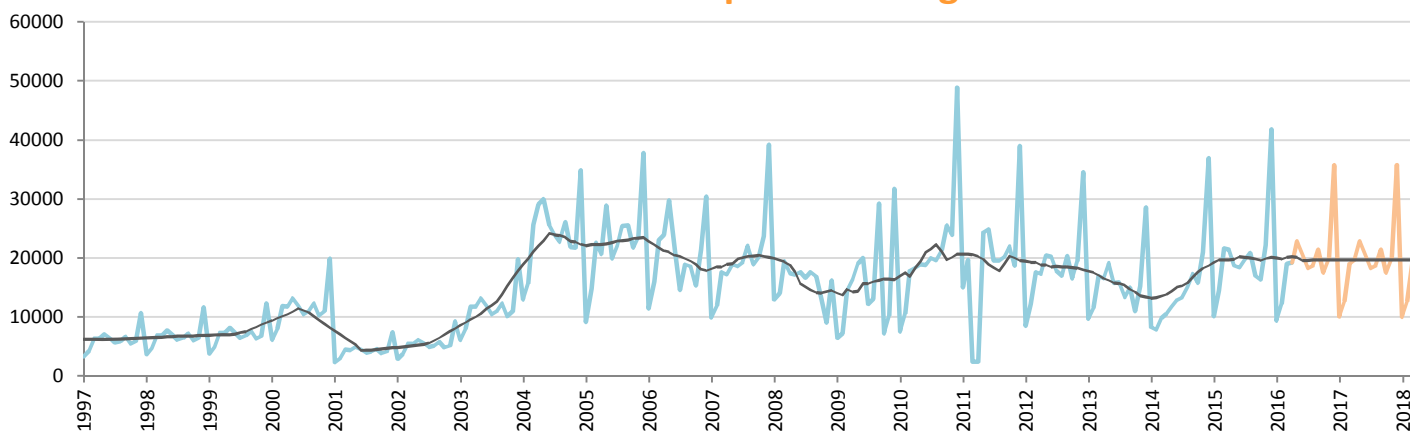


Data processing and forecast by CORAM

CORAM

	Jan.	Feb.	March	April	May	June	July	Aug.	Sept.	Oct.	Nov.	Dec.	YTD	FY
2015	24,498	40,817	61,676	70,211	62,878	67,766	64,218	61,753	47,088	47,954	62,397	114,340	197,202	725,596
2016	23,348	40,588	63,975	65,618	64,207	67,371	63,736	62,747	55,156	55,881	67,240	117,365	193,529	747,232
YTY (%)	-4.7	-0.6	3.7	-6.5	2.1	-0.6	-0.7	1.6	17.1	16.5	7.8	2.6	-1.9	3.0

Car Sales Forecast : TURKEY April 2016 - Light Com. Veh.

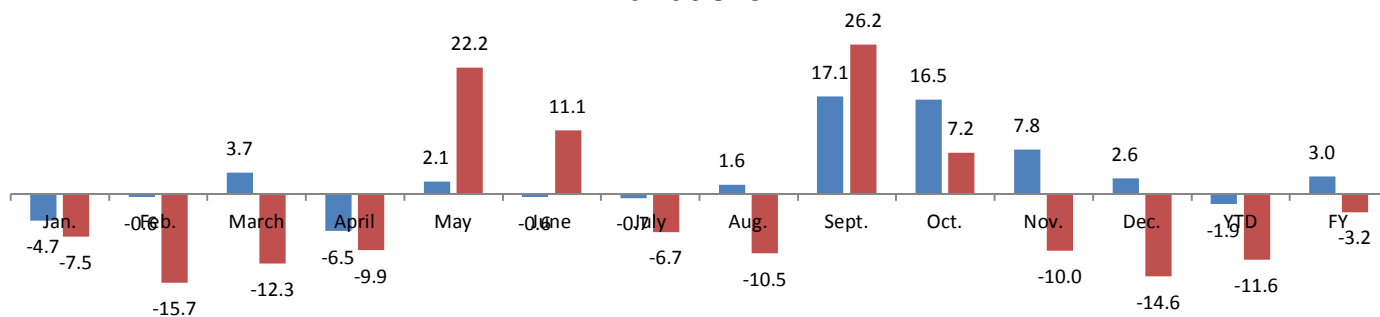


Data processing and forecast by CORAM

CORAM

	Jan.	Feb.	March	April	May	June	July	Aug.	Sept.	Oct.	Nov.	Dec.	YTD	FY
2015	10,117	14,514	21,626	21,391	18,664	18,392	19,618	20,824	16,937	16,301	22,204	41,833	67,648	242,421
2016	9,355	12,237	18,973	19,269	22,804	20,430	18,301	18,647	21,370	17,477	19,985	35,742	59,834	234,589
YTY (%)	-7.5	-15.7	-12.3	-9.9	22.2	11.1	-6.7	-10.5	26.2	7.2	-10.0	-14.6	-11.6	-3.2

YTY variations



Data source: OSD. Data processing and forecast by CORAM.