

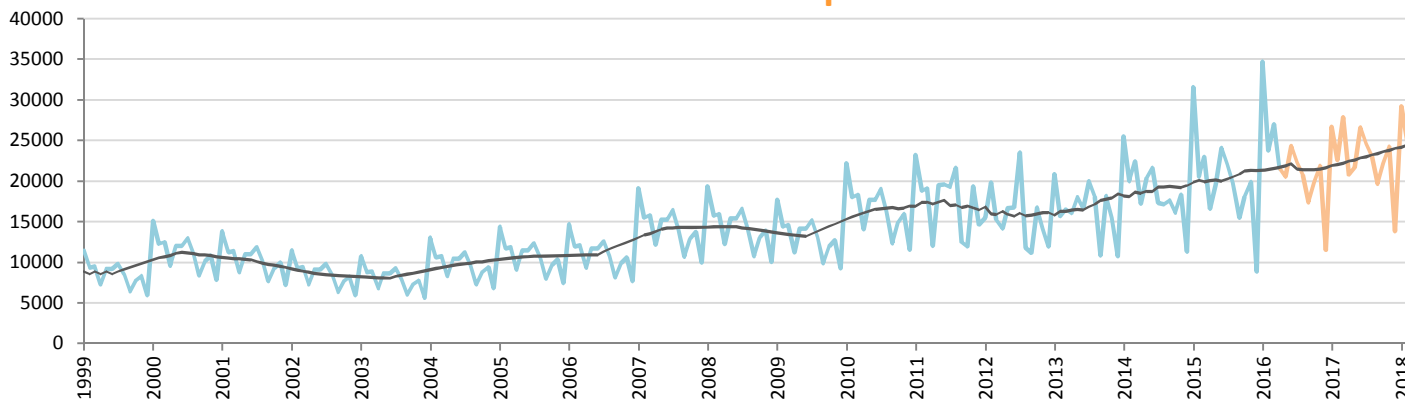
Car Sales Forecast : ISRAEL April 2016

Total	Jan.	Feb.	March	April	May	June	July	Aug.	Sept.	Oct.	Nov.	Dec.	YTD	FY
2015	33,262	21,705	24,367	17,674	20,763	25,470	23,486	21,240	17,735	20,390	21,005	9,793	97,008	256,890
2016	36,281	25,789	28,537	22,927	21,973	25,975	23,882	22,315	19,484	21,895	23,086	12,500	113,534	284,645
YTY (%)	9.1	18.8	17.1	29.7	5.8	2.0	1.7	5.1	9.9	7.4	9.9	27.6	17.0	10.8

Comment: In April the car sales increase by 29,7%. 2016 forecast is an increase of 10,8%.

Trend FY 2017 : 293,000 2.9

Car Sales Forecast : ISRAEL April 2016 - Car

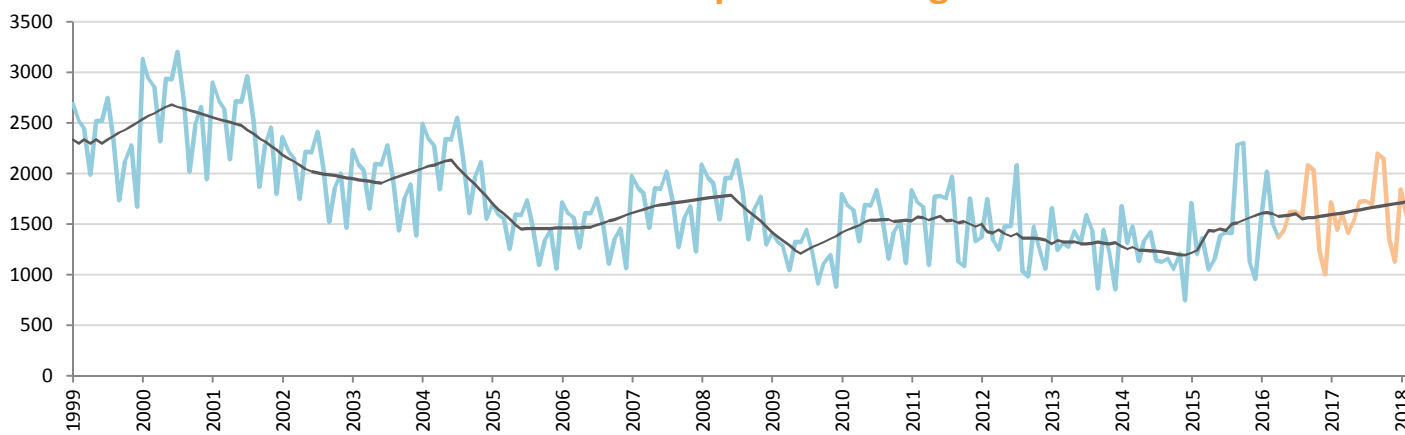


Data processing and forecast by CORAM

CORAM

	Jan.	Feb.	March	April	May	June	July	Aug.	Sept.	Oct.	Nov.	Dec.	YTD	FY
2015	31,553	20,501	23,006	16,621	19,611	24,083	22,066	19,826	15,449	18,088	19,868	8,835	91,681	239,507
2016	34,713	23,770	27,037	21,561	20,536	24,354	22,263	20,731	17,397	19,860	21,852	11,497	107,081	265,571
YTY (%)	10.0	15.9	17.5	29.7	4.7	1.1	0.9	4.6	12.6	9.8	10.0	30.1	16.8	10.9

Car Sales Forecast : ISRAEL April 2016 - Light Com. Veh.

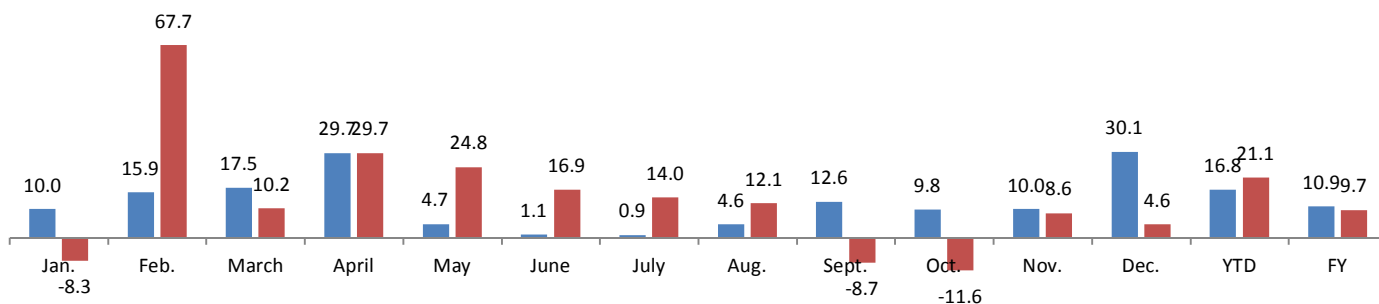


Data processing and forecast by CORAM

CORAM

	Jan.	Feb.	March	April	May	June	July	Aug.	Sept.	Oct.	Nov.	Dec.	YTD	FY
2015	1,709	1,204	1,361	1,053	1,152	1,387	1,420	1,414	2,286	2,302	1,137	958	5,327	17,383
2016	1,568	2,019	1,500	1,366	1,437	1,621	1,619	1,584	2,087	2,035	1,235	1,003	6,453	19,074
YTY (%)	-8.3	67.7	10.2	29.7	24.8	16.9	14.0	12.1	-8.7	-11.6	8.6	4.6	21.1	9.7

YTY variations



Data source: IVIA. Data processing and forecast by CORAM.