

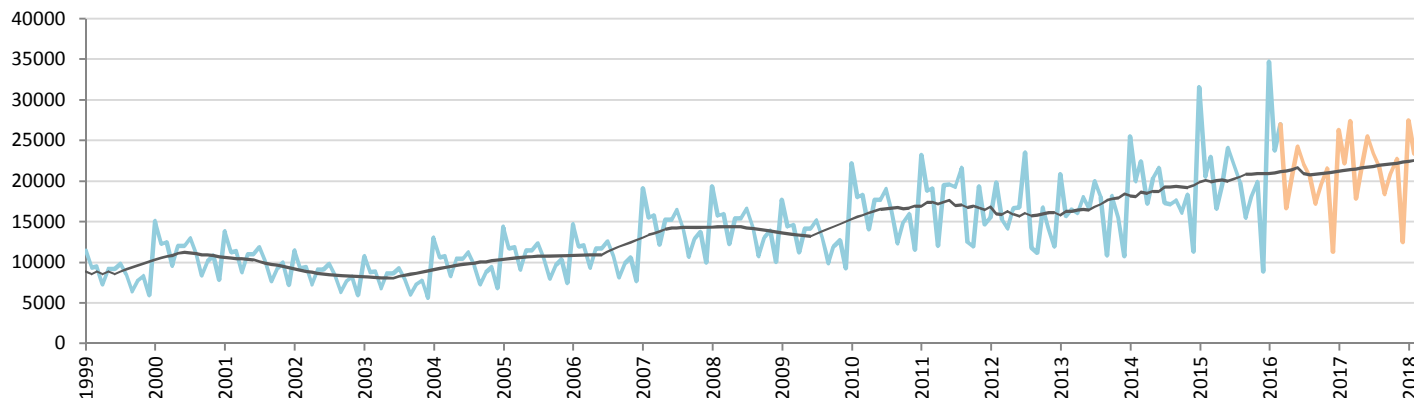
Car Sales Forecast : ISRAEL March 2016

Total	Jan.	Feb.	March	April	May	June	July	Aug.	Sept.	Oct.	Nov.	Dec.	YTD	FY
2015	33,262	21,705	24,367	17,674	20,763	25,470	23,486	21,240	17,735	20,390	21,005	9,793	79,334	256,890
2016	36,281	25,789	28,537	17,961	22,021	25,887	23,748	22,148	19,306	21,650	22,793	12,250	90,607	278,371
YTY (%)	9.1	18.8	17.1	1.6	6.1	1.6	1.1	4.3	8.9	6.2	8.5	25.1	14.2	8.4

Comment: In March the car sales increase by 17,1%. 2016 forecast is an increase of 8,4%.

Trend FY 2017 : 280,000 0.6

Car Sales Forecast : ISRAEL March 2016 - Car

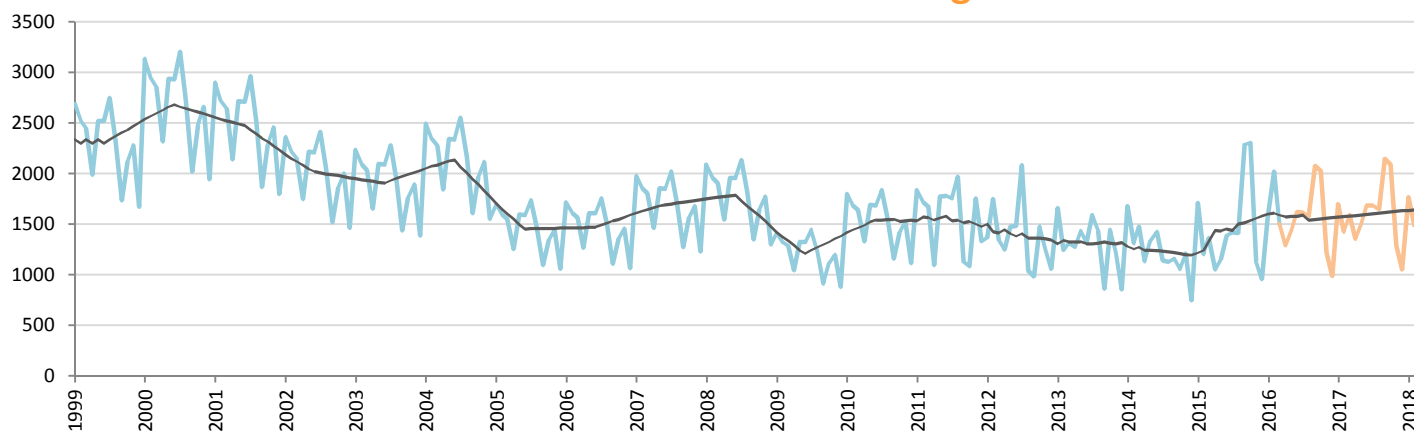


Data processing and forecast by CORAM

CORAM

	Jan.	Feb.	March	April	May	June	July	Aug.	Sept.	Oct.	Nov.	Dec.	YTD	FY
2015	31,553	20,501	23,006	16,621	19,611	24,083	22,066	19,826	15,449	18,088	19,868	8,835	75,060	239,507
2016	34,713	23,770	27,037	16,671	20,584	24,268	22,132	20,569	17,227	19,626	21,573	11,264	85,520	259,435
YTY (%)	10.0	15.9	17.5	0.3	5.0	0.8	0.3	3.7	11.5	8.5	8.6	27.5	13.9	8.3

Car Sales Forecast : ISRAEL March 2016 - Light Com. Veh.

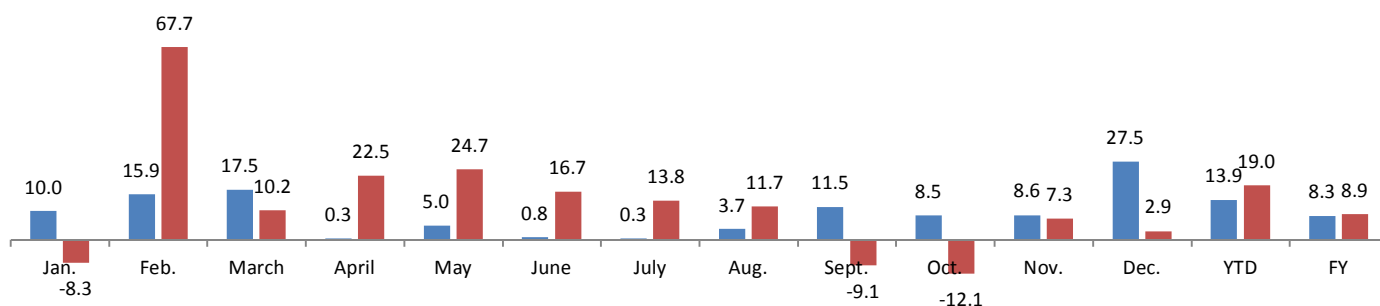


Data processing and forecast by CORAM

CORAM

	Jan.	Feb.	March	April	May	June	July	Aug.	Sept.	Oct.	Nov.	Dec.	YTD	FY
2015	1,709	1,204	1,361	1,053	1,152	1,387	1,420	1,414	2,286	2,302	1,137	958	4,274	17,383
2016	1,568	2,019	1,500	1,290	1,436	1,619	1,616	1,579	2,079	2,024	1,220	986	5,087	18,936
YTY (%)	-8.3	67.7	10.2	22.5	24.7	16.7	13.8	11.7	-9.1	-12.1	7.3	2.9	19.0	8.9

YTY variations



Data source: IVIA. Data processing and forecast by CORAM.