

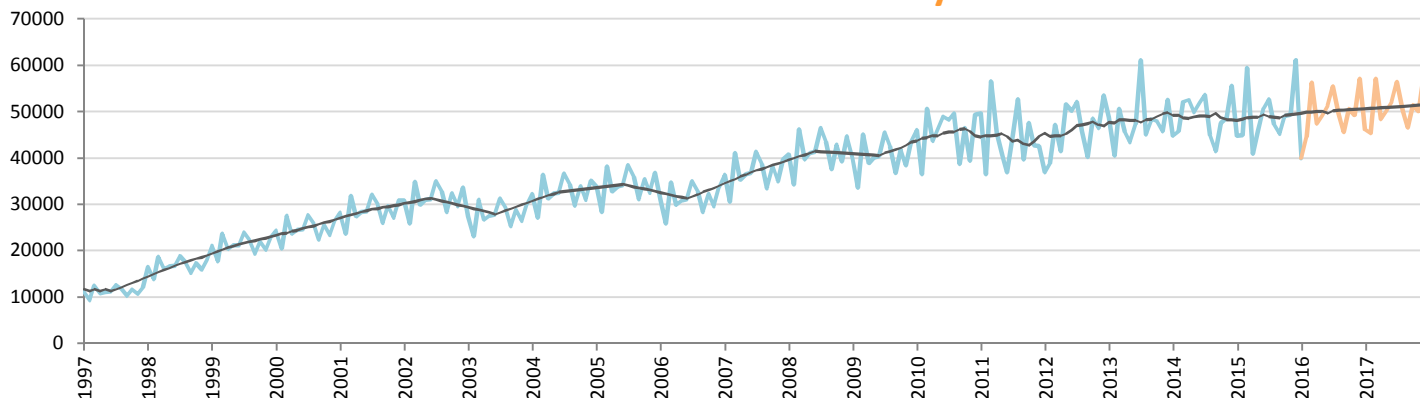
Car Sales Forecast : MALAYSIA January 2016

Total	Jan.	Feb.	March	April	May	June	July	Aug.	Sept.	Oct.	Nov.	Dec.	YTD	FY
2015	50,602	50,390	66,115	45,187	51,254	57,437	58,646	53,462	51,106	55,754	56,092	69,401	50,602	665,446
2016	44,591	49,306	62,527	51,875	54,193	57,453	61,197	55,138	51,137	56,801	55,382	64,974	44,591	664,574
YTY (%)	-11.9	-2.2	-5.4	14.8	5.7	0.0	4.3	3.1	0.1	1.9	-1.3	-6.4	-11.9	-0.1

Comment: In January the car sales decrease by 11,9%. 2016 forecast is a decrease of 0,1%.

Trend FY 2017 :	677,000	1.9
-----------------	---------	-----

Car Sales Forecast : MALAYSIA January 2016 - Car

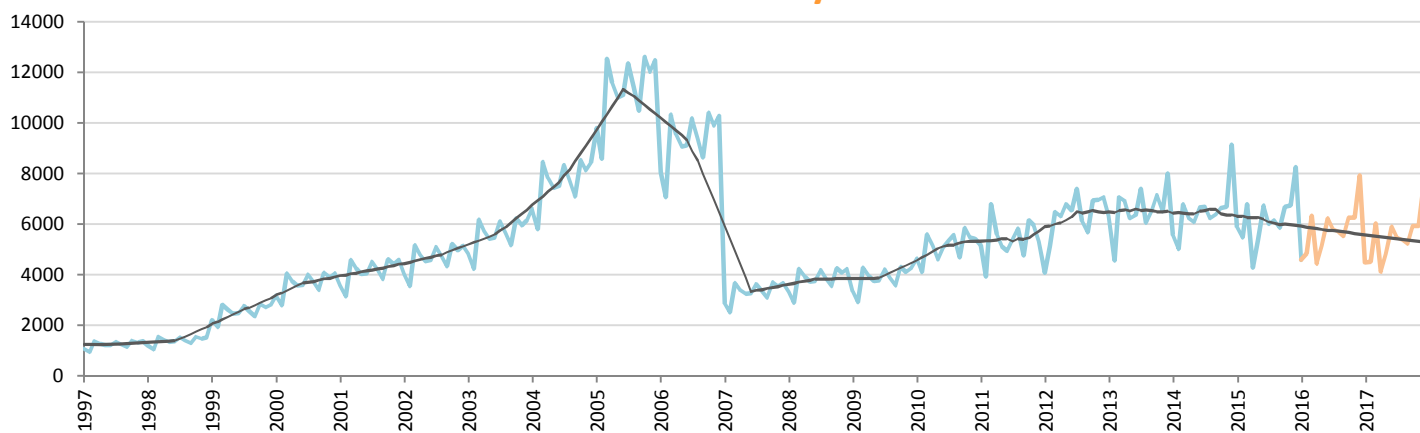


Data processing and forecast by CORAM

CORAM

	Jan.	Feb.	March	April	May	June	July	Aug.	Sept.	Oct.	Nov.	Dec.	YTD	FY
2015	44,697	44,917	59,318	40,902	45,874	50,695	52,636	47,302	45,245	49,063	49,348	61,132	44,697	591,129
2016	40,000	44,459	56,181	47,437	49,054	51,227	55,401	49,434	45,600	50,551	49,126	57,044	40,000	595,515
YTY (%)	-10.5	-1.0	-5.3	16.0	6.9	1.1	5.3	4.5	0.8	3.0	-0.5	-6.7	-10.5	0.7

Car Sales Forecast : MALAYSIA January 2016 - Commercial Veh.

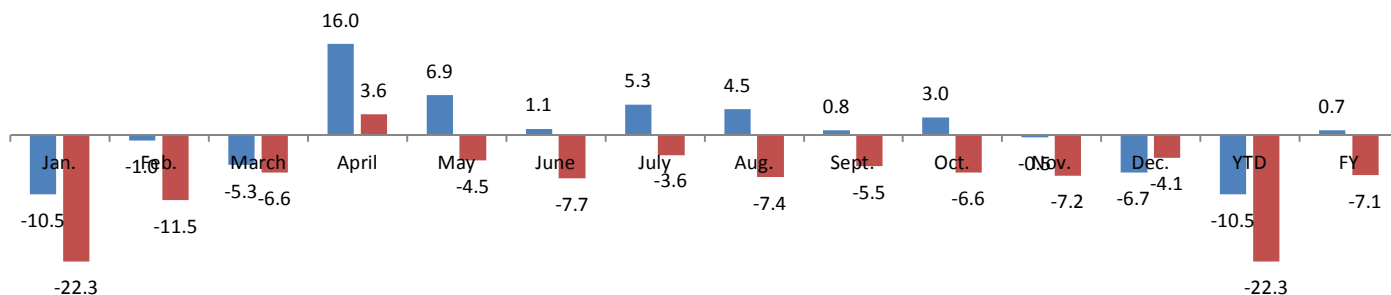


Data processing and forecast by CORAM

CORAM

	Jan.	Feb.	March	April	May	June	July	Aug.	Sept.	Oct.	Nov.	Dec.	YTD	FY
2015	5,905	5,473	6,797	4,285	5,380	6,742	6,010	6,160	5,861	6,691	6,744	8,269	5,905	74,317
2016	4,591	4,846	6,345	4,438	5,139	6,226	5,796	5,704	5,538	6,249	6,256	7,930	4,591	69,059
YTY (%)	-22.3	-11.5	-6.6	3.6	-4.5	-7.7	-3.6	-7.4	-5.5	-6.6	-7.2	-4.1	-22.3	-7.1

YTY variations



Data source: MAA. Data processing and forecast by CORAM.