

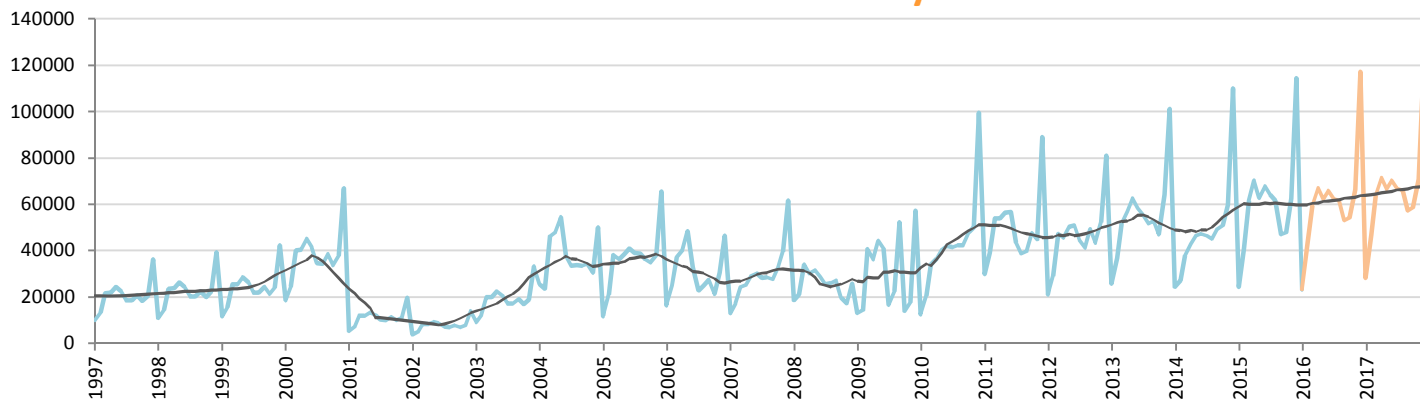
# Car Sales Forecast : TURKEY January 2016

Total	Jan.	Feb.	March	April	May	June	July	Aug.	Sept.	Oct.	Nov.	Dec.	YTD	FY
2015	34,615	55,331	83,302	91,602	81,542	86,158	83,836	82,577	64,025	64,255	84,601	156,173	34,615	968,017
2016	32,703	55,063	78,752	86,939	85,053	86,460	81,003	80,759	74,931	72,127	86,738	153,152	32,703	973,681
YTY (%)	-5.5	-0.5	-5.5	-5.1	4.3	0.4	-3.4	-2.2	17.0	12.3	2.5	-1.9	-5.5	0.6

Comment: In January the car sales decrease by 5,5%. 2016 forecast is an increase of 0,6%.

Trend FY 2017 :	1,030,000	5.8
-----------------	-----------	-----

## Car Sales Forecast : TURKEY January 2016 - Car

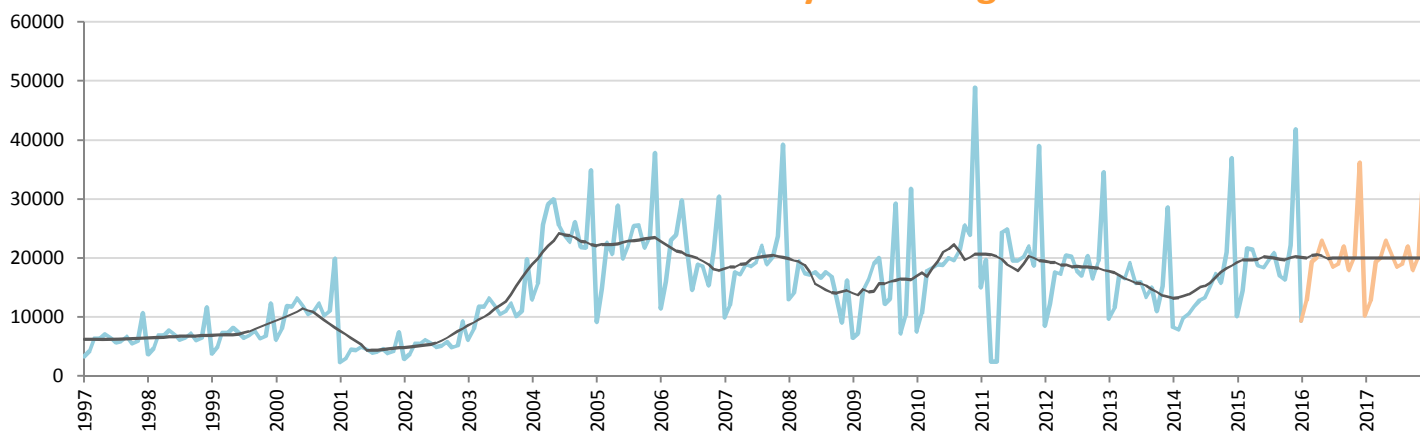


Data processing and forecast by CORAM

CORAM

	Jan.	Feb.	March	April	May	June	July	Aug.	Sept.	Oct.	Nov.	Dec.	YTD	FY
2015	24,498	40,817	61,676	70,211	62,878	67,766	64,218	61,753	47,088	47,954	62,397	114,340	24,498	725,596
2016	23,348	42,295	59,452	66,874	62,158	65,918	62,569	61,692	52,970	54,243	66,441	116,986	23,348	734,947
YTY (%)	-4.7	3.6	-3.6	-4.8	-1.1	-2.7	-2.6	-0.1	12.5	13.1	6.5	2.3	-4.7	1.3

## Car Sales Forecast : TURKEY January 2016 - Light Com. Veh.

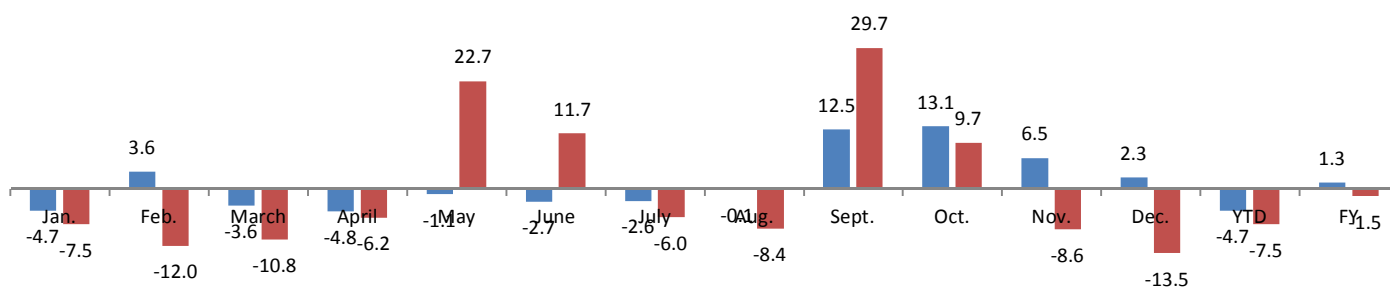


Data processing and forecast by CORAM

CORAM

	Jan.	Feb.	March	April	May	June	July	Aug.	Sept.	Oct.	Nov.	Dec.	YTD	FY
2015	10,117	14,514	21,626	21,391	18,664	18,392	19,618	20,824	16,937	16,301	22,204	41,833	10,117	242,421
2016	9,355	12,768	19,300	20,065	22,895	20,542	18,435	19,067	21,961	17,884	20,297	36,166	9,355	238,734
YTY (%)	-7.5	-12.0	-10.8	-6.2	22.7	11.7	-6.0	-8.4	29.7	9.7	-8.6	-13.5	-7.5	-1.5

### YTY variations



Data source: OSD. Data processing and forecast by CORAM.