

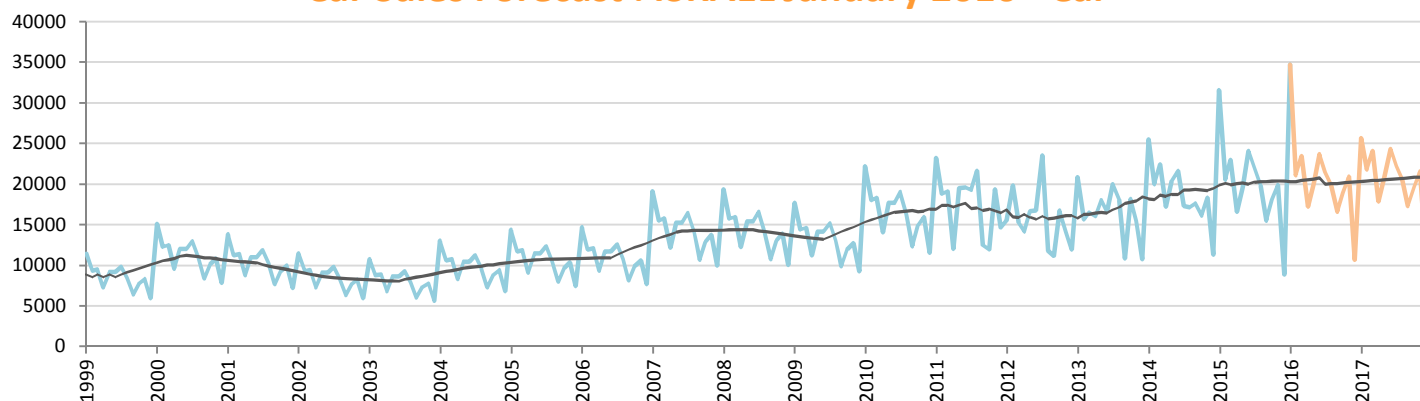
## Car Sales Forecast : ISRAEL January 2016

Total	Jan.	Feb.	March	April	May	June	July	Aug.	Sept.	Oct.	Nov.	Dec.	YTD	FY
2015	33,262	21,705	24,367	17,674	20,763	25,470	23,486	21,240	17,735	20,390	21,005	9,793	33,262	256,890
2016	36,281	22,461	24,815	18,508	21,410	25,068	22,923	21,346	18,315	20,684	22,219	11,929	36,281	265,958
YTY (%)	9.1	3.5	1.8	4.7	3.1	-1.6	-2.4	0.5	3.3	1.4	5.8	21.8	9.1	3.5

Comment: In January the car sales increase by 9,1%. 2016 forecast is an increase of 3,5%.

Trend FY 2017 : 264,000 -0.7

### Car Sales Forecast : ISRAEL January 2016 - Car

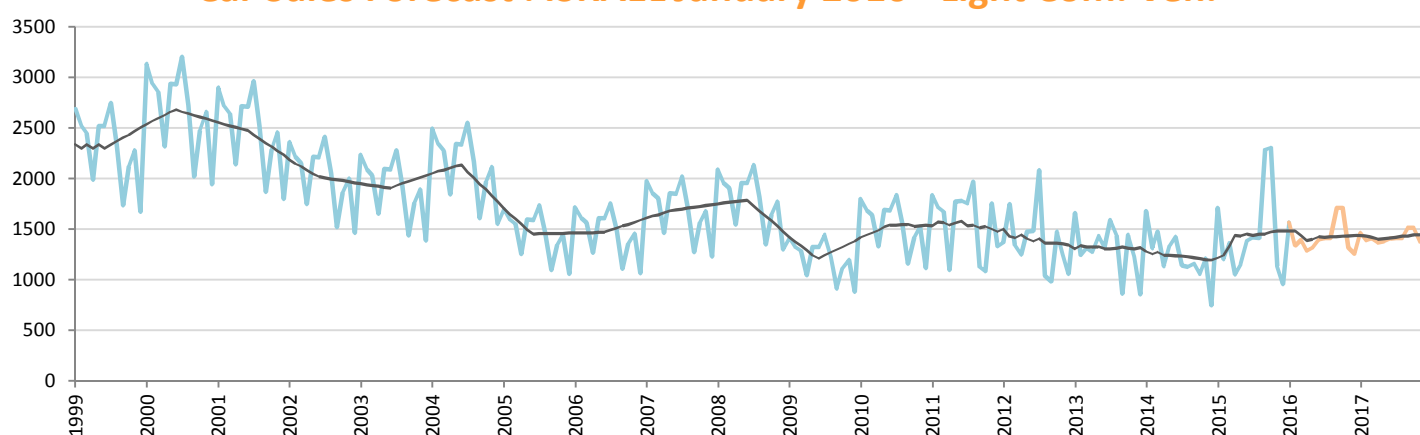


Data processing and forecast by CORAM

CORAM

	Jan.	Feb.	March	April	May	June	July	Aug.	Sept.	Oct.	Nov.	Dec.	YTD	FY
2015	31,553	20,501	23,006	16,621	19,611	24,083	22,066	19,826	15,449	18,088	19,868	8,835	31,553	239,507
2016	34,713	21,122	23,422	17,220	20,088	23,666	21,510	19,935	16,606	18,969	20,903	10,674	34,713	248,829
YTY (%)	10.0	3.0	1.8	3.6	2.4	-1.7	-2.5	0.6	7.5	4.9	5.2	20.8	10.0	3.9

### Car Sales Forecast : ISRAEL January 2016 - Light Com. Veh.

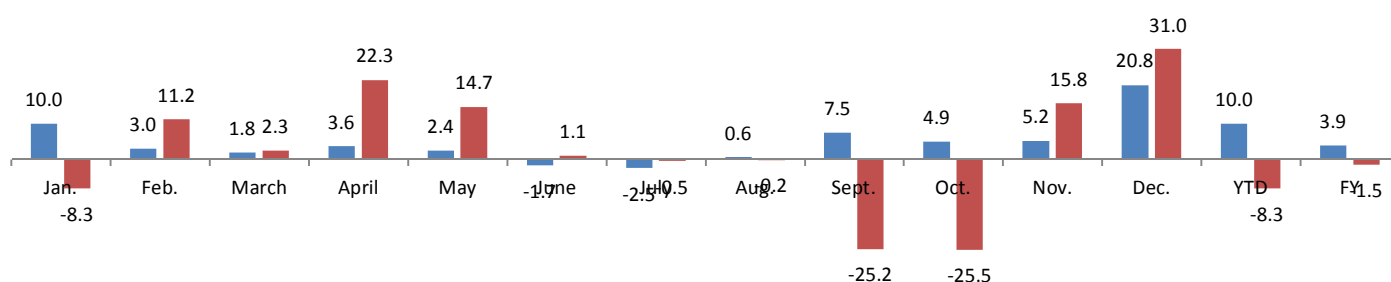


Data processing and forecast by CORAM

CORAM

	Jan.	Feb.	March	April	May	June	July	Aug.	Sept.	Oct.	Nov.	Dec.	YTD	FY
2015	1,709	1,204	1,361	1,053	1,152	1,387	1,420	1,414	2,286	2,302	1,137	958	1,709	17,383
2016	1,568	1,339	1,393	1,287	1,321	1,402	1,413	1,411	1,709	1,715	1,316	1,255	1,568	17,129
YTY (%)	-8.3	11.2	2.3	22.3	14.7	1.1	-0.5	-0.2	-25.2	-25.5	15.8	31.0	-8.3	-1.5

### YTY variations



Data source: IVIA. Data processing and forecast by CORAM.