

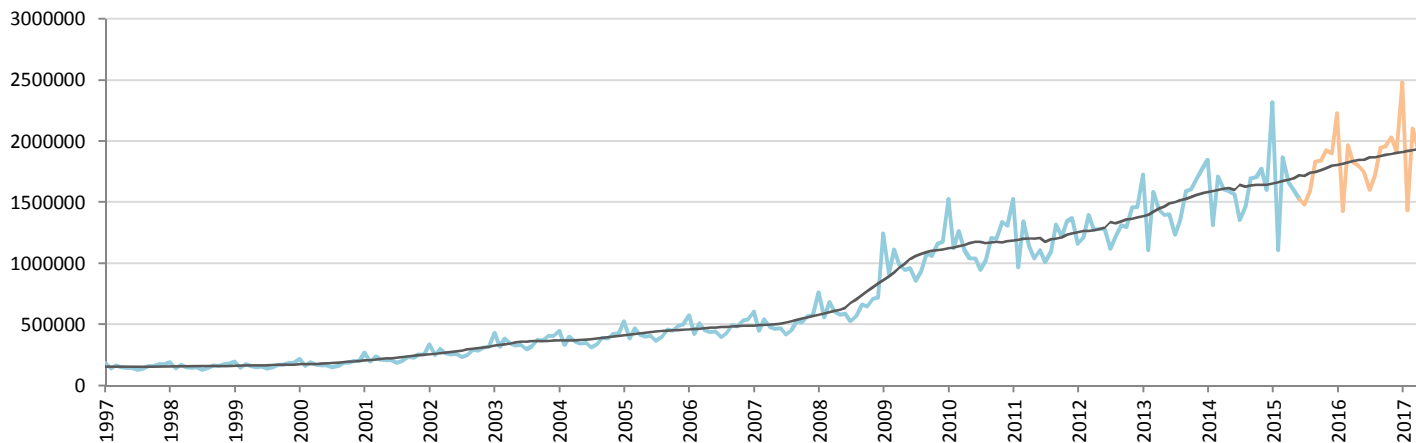
Car Sales Forecast : CHINA June 2015

Total	Jan.	Feb.	March	April	May	June	July	Aug.	Sept.	Oct.	Nov.	Dec.	YTD	FY
2015	2,601,200	1,308,800	2,240,600	1,994,500	1,903,800	1,819,825	1,704,467	1,830,869	2,105,116	2,108,771	2,213,829	2,206,756	11,868,725	24,038,533
YTY (%)	20.6	-18.0	3.3	-0.5	-0.4	-1.4	5.3	6.7	6.1	6.1	5.9	12.9	1.6	4.4

Comment: In June the car sales decrease by 1,4%. 2015 forecast is an increase of 4,4%.

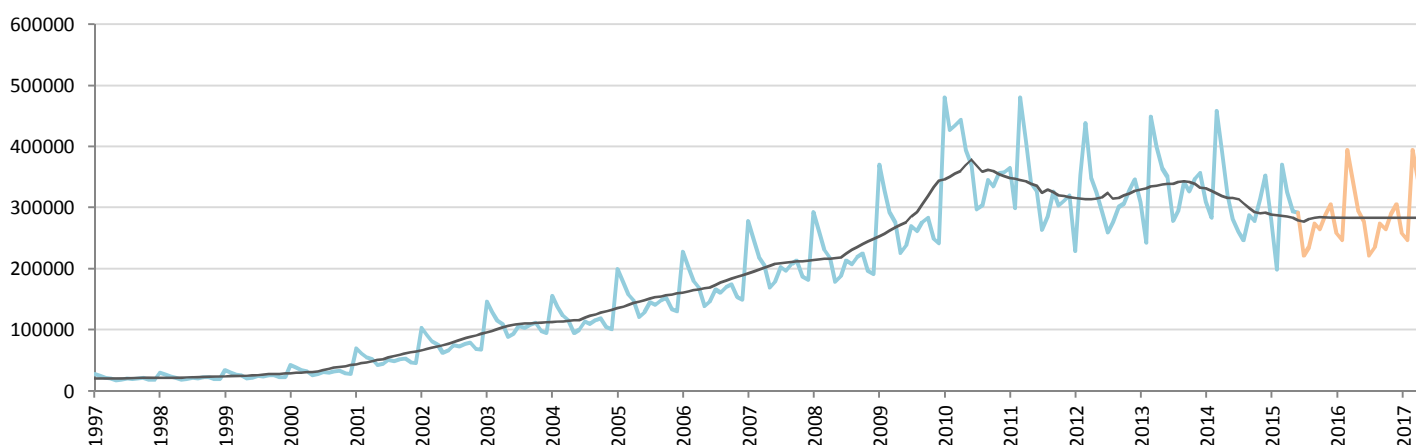
Forecast FY 2016 :	25,600,000	6.4%
--------------------	------------	------

Passenger Car



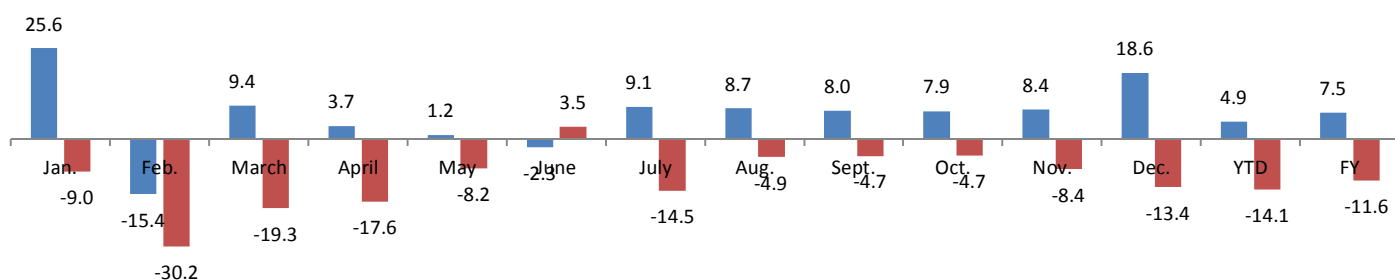
	Jan.	Feb.	March	April	May	June	July	Aug.	Sept.	Oct.	Nov.	Dec.	YTD	FY
2014	1,846,900	1,312,200	1,709,689	1,609,000	1,590,400	1,564,100	1,357,900	1,468,200	1,696,000	1,708,900	1,775,300	1,602,600	9,632,289	19,241,189
2015	2,319,600	1,110,400	1,870,400	1,668,800	1,609,300	1,528,125 *	1,482,120	1,595,676	1,831,040	1,843,515	1,924,624	1,901,417	10,106,625	20,685,017
YTY (%)	25.6	-15.4	9.4	3.7	1.2	-2.3	9.1	8.7	8.0	7.9	8.4	18.6	4.9	7.5

All Commercial Vehicles



	Jan.	Feb.	March	April	May	June	July	Aug.	Sept.	Oct.	Nov.	Dec.	YTD	FY
2014	309,500	284,200	459,000	395,200	320,800	281,700	260,200	247,400	287,600	278,300	315,600	352,700	2,050,400	3,792,200
2015	281,600	198,400	370,200	325,700	294,500	291,700	222,347	235,192	274,076	265,256	289,205	305,340	1,762,100	3,353,516
YTY (%)	-9.0	-30.2	-19.3	-17.6	-8.2	3.5	-14.5	-4.9	-4.7	-4.7	-8.4	-13.4	-14.1	-11.6

YTY variations



Data source: CORAM,CAAM

* : figures corrected from the data released by CAAM : CAAM released PC+CV as PC figure