

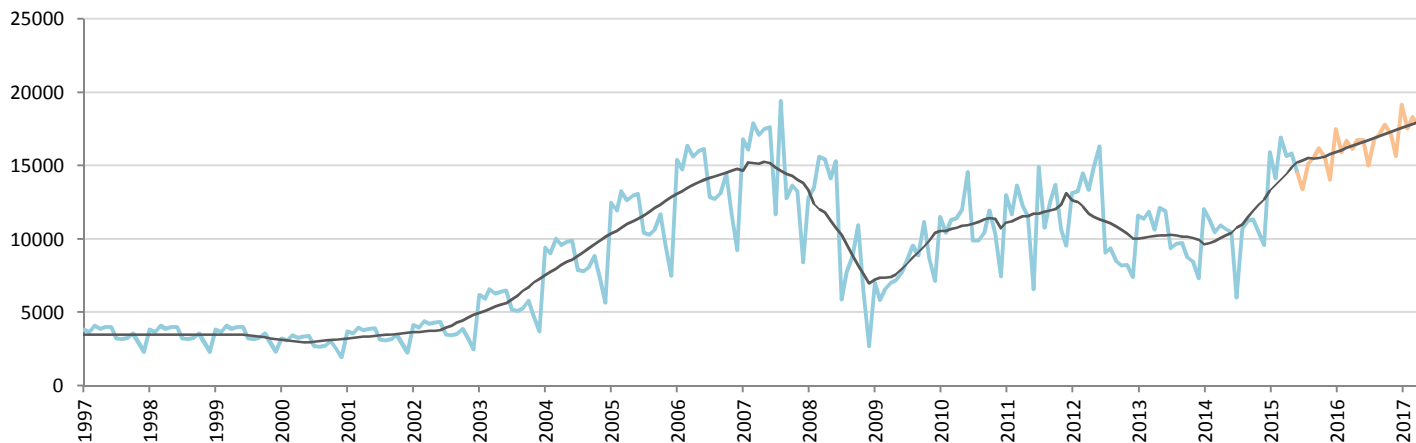
Car Sales Forecast : PAKISTAN June 2015

Total	Jan.	Feb.	March	April	May	June	July	Aug.	Sept.	Oct.	Nov.	Dec.	YTD	FY
2015	17,709	17,356	21,147	19,176	19,337	17,802	16,614	18,541	18,986	19,609	18,998	17,500	112,527	222,775
YTY (%)	27.3	35.7	72.4	56.5	56.7	47.4	139.1	51.3	49.6	55.0	61.2	57.8	48.8	55.7

Comment: In June the car sales increase by 47,4%. 2015 forecast is an increase of 55,7%.

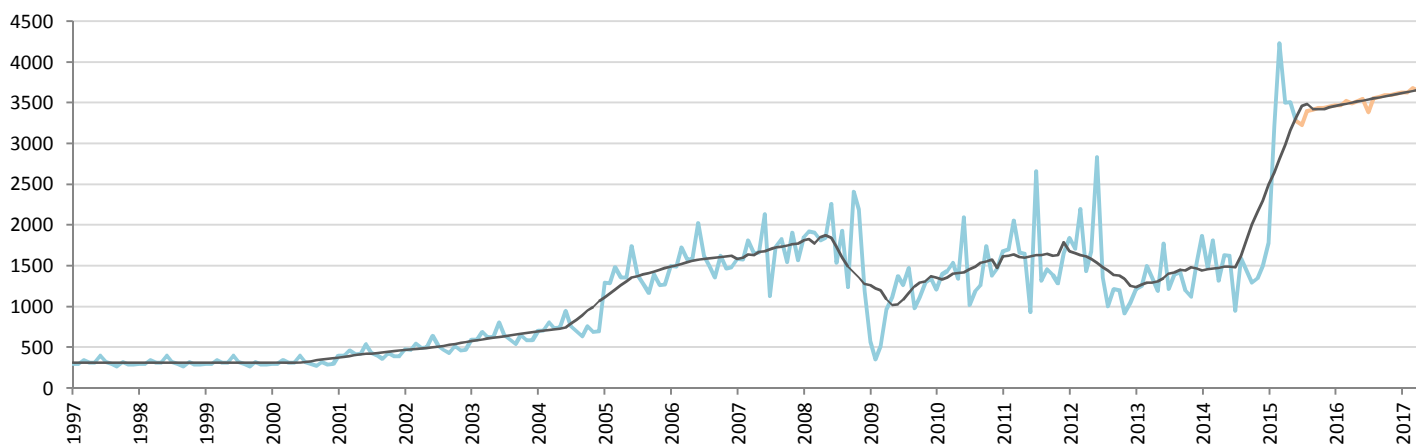
Forecast FY 2016 :	242,000	8.5%
--------------------	---------	------

Passenger Car



	Jan.	Feb.	March	April	May	June	July	Aug.	Sept.	Oct.	Nov.	Dec.	YTD	FY
2014	12,043	11,317	10,457	10,929	10,701	10,457	5,995	10,666	11,255	11,353	10,438	9,591	65,904	125,202
2015	15,924	14,144	16,911	15,670	15,825	14,525	13,384	15,140	15,570	16,173	15,560	14,042	92,999	182,868
YTY (%)	32.2	25.0	61.7	43.4	47.9	38.9	123.3	41.9	38.3	42.5	49.1	46.4	41.1	46.1

All Commercial Vehicles



	Jan.	Feb.	March	April	May	June	July	Aug.	Sept.	Oct.	Nov.	Dec.	YTD	FY
2014	1,867	1,472	1,812	1,321	1,636	1,624	953	1,592	1,438	1,298	1,351	1,496	9,732	17,860
2015	1,785	3,212	4,236	3,506	3,512	3,277	3,230	3,401	3,416	3,436	3,438	3,458	19,528	39,907
YTY (%)	-4.4	118.2	133.8	165.4	114.7	101.8	238.9	113.7	137.5	164.7	154.5	131.1	100.7	123.4

YTY variations

