

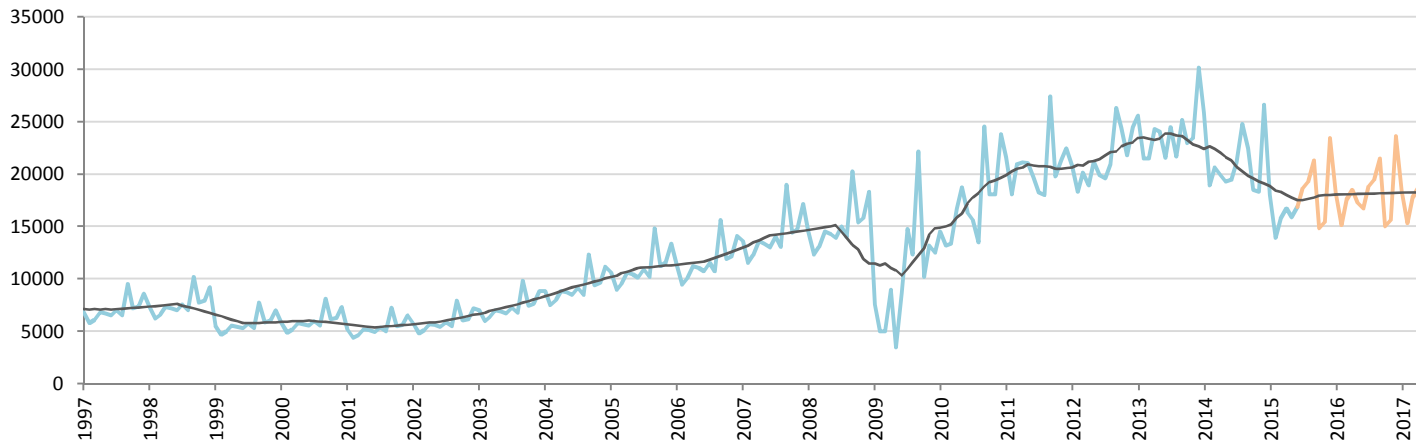
# Car Sales Forecast : CHILE June 2015

Total	Jan.	Feb.	March	April	May	June	July	Aug.	Sept.	Oct.	Nov.	Dec.	YTD	FY
<b>2015</b>	23,891	18,233	21,469	23,084	21,184	22,632	24,525	24,755	27,294	20,735	21,220	29,412	130,493	278,434
<b>YTY (%)</b>	-30.2	-29.1	-22.8	-13.5	-16.2	-12.3	-11.0	-19.7	-8.3	-18.6	-12.6	-13.9	-21.2	-17.5

Comment: In June the car sales decrease by 12,3%. 2015 forecast is a decrease of 17,5%.

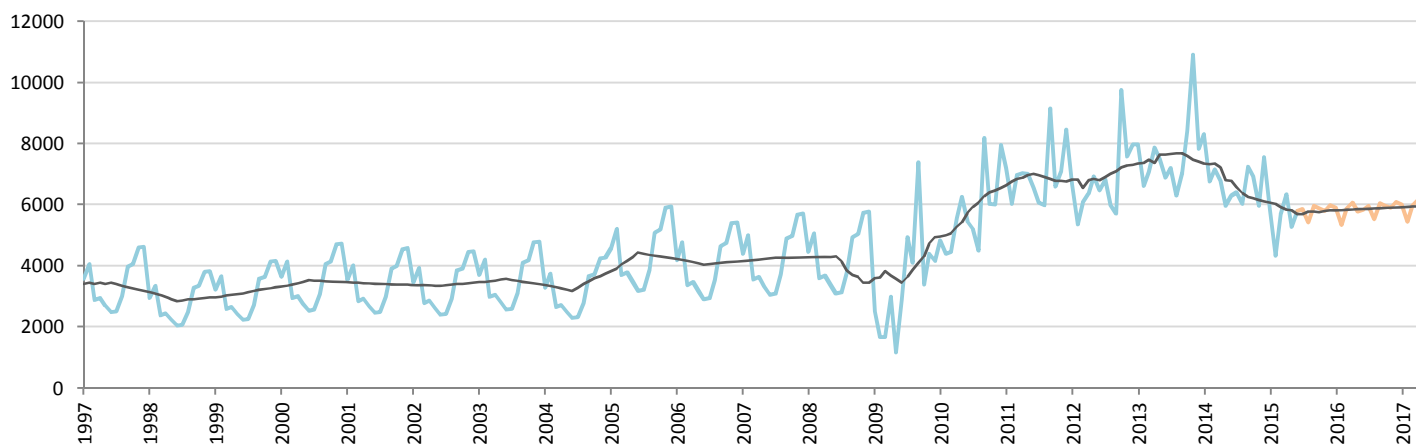
Forecast FY 2016 :	288,000	3.4%
--------------------	---------	------

## Passenger Car



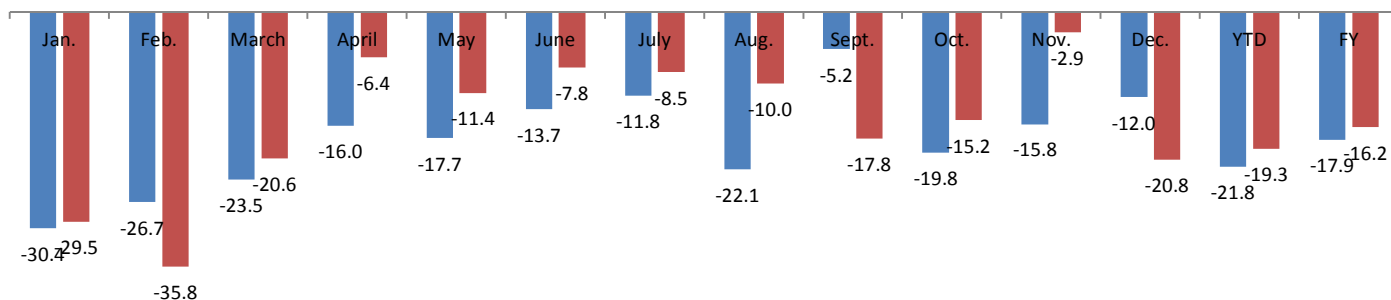
	Jan.	Feb.	March	April	May	June	July	Aug.	Sept.	Oct.	Nov.	Dec.	YTD	FY
<b>2014</b>	25,906	18,961	20,630	19,921	19,324	19,502	21,146	24,813	22,500	18,530	18,319	26,608	124,244	256,160
<b>2015</b>	18,024	13,897	15,777	16,739	15,898	16,831	18,653	19,327	21,333	14,859	15,426	23,426	97,166	210,191
<b>YTY (%)</b>	-30.4	-26.7	-23.5	-16.0	-17.7	-13.7	-11.8	-22.1	-5.2	-19.8	-15.8	-12.0	-21.8	-17.9

## Light Commercial Vehicles



	Jan.	Feb.	March	April	May	June	July	Aug.	Sept.	Oct.	Nov.	Dec.	YTD	FY
<b>2014</b>	8,318	6,755	7,171	6,777	5,965	6,295	6,415	6,033	7,253	6,929	5,967	7,556	41,281	81,434
<b>2015</b>	5,867	4,336	5,692	6,345	5,286	5,801	5,872	5,428	5,960	5,876	5,794	5,986	33,327	68,243
<b>YTY (%)</b>	-29.5	-35.8	-20.6	-6.4	-11.4	-7.8	-8.5	-10.0	-17.8	-15.2	-2.9	-20.8	-19.3	-16.2

## YTY variations



Data source: CORAM,ANAC