

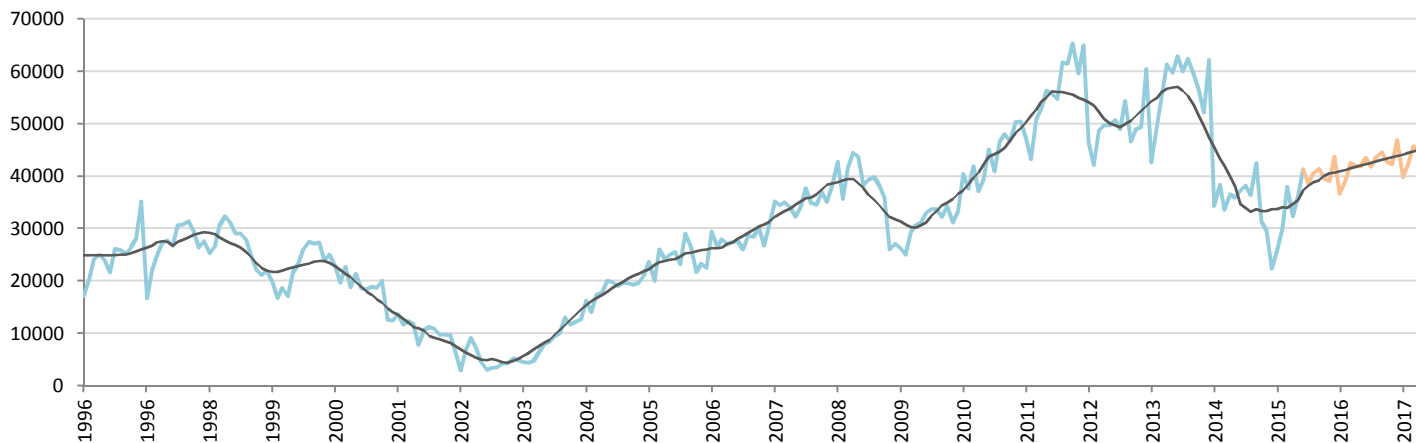
Car Sales Forecast : ARGENTINA June 2015

Total	Jan.	Feb.	March	April	May	June	July	Aug.	Sept.	Oct.	Nov.	Dec.	YTD	FY
2015	32,427	42,348	50,530	43,729	50,216	57,867	52,187	55,382	57,081	54,260	52,525	62,870	277,117	611,420
YTY (%)	-27.5	-20.2	5.7	-11.8	2.6	12.9	0.4	12.9	-1.1	20.1	34.1	59.2	-6.2	5.8

Comment: In June the car sales increase by 12,9%. 2015 forecast is an increase of 5,8%.

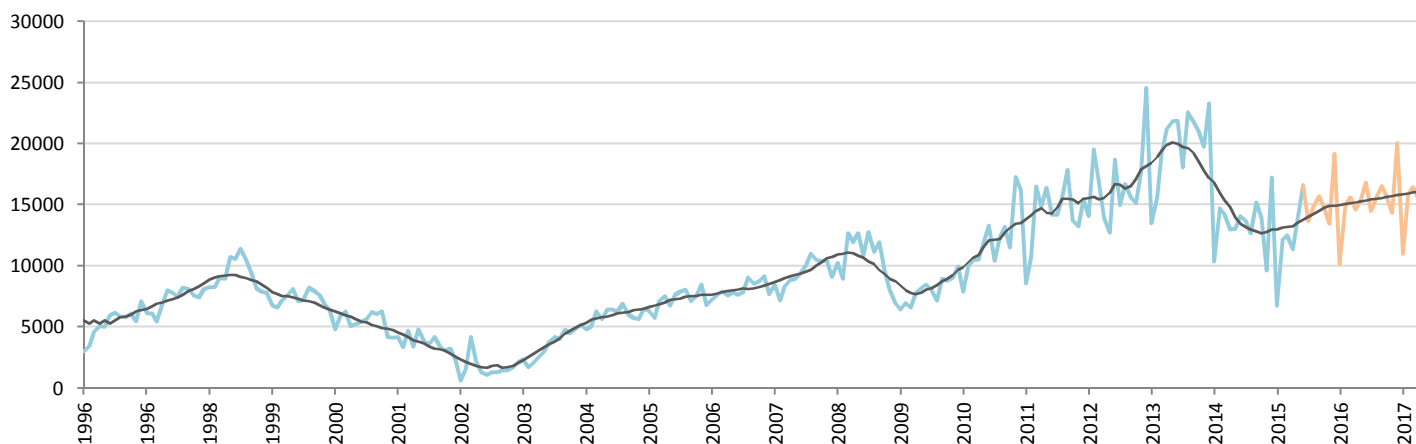
Forecast FY 2016 :	692,000	13.1%
--------------------	---------	-------

Passenger Car



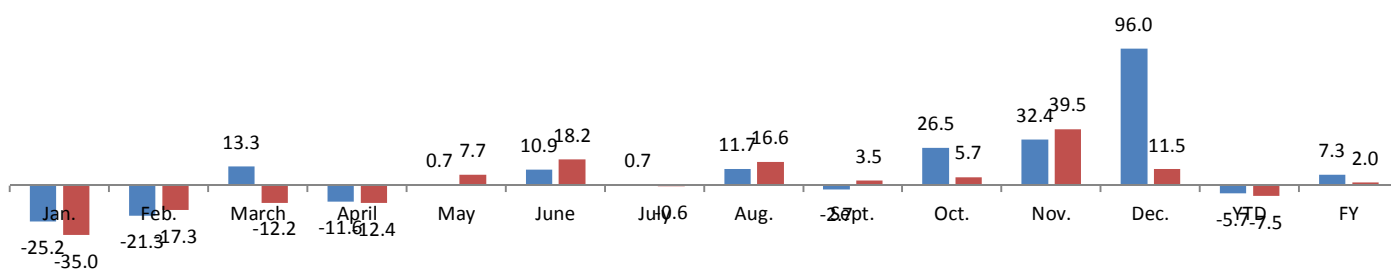
	Jan.	Feb.	March	April	May	June	July	Aug.	Sept.	Oct.	Nov.	Dec.	YTD	FY
2014	34,350	38,389	33,582	36,579	35,929	37,213	38,274	36,351	42,537	31,244	29,509	22,285	216,042	416,242
2015	25,693	30,196	38,034	32,353	36,179	41,256	38,546	40,587	41,383	39,539	39,058	43,685	203,711	446,509
YTY (%)	-25.2	-21.3	13.3	-11.6	0.7	10.9	0.7	11.7	-2.7	26.5	32.4	96.0	-5.7	7.3

Light Commercial Vehicles



	Jan.	Feb.	March	April	May	June	July	Aug.	Sept.	Oct.	Nov.	Dec.	YTD	FY
2014	10,357	14,700	14,232	12,979	13,037	14,059	13,718	12,683	15,161	13,926	9,652	17,209	79,364	161,713
2015	6,734	12,152	12,496	11,376	14,037	16,611	13,641	14,794	15,697	14,721	13,467	19,184	73,406	164,911
YTY (%)	-35.0	-17.3	-12.2	-12.4	7.7	18.2	-0.6	16.6	3.5	5.7	39.5	11.5	-7.5	2.0

YTY variations



Data source: ADEFA