

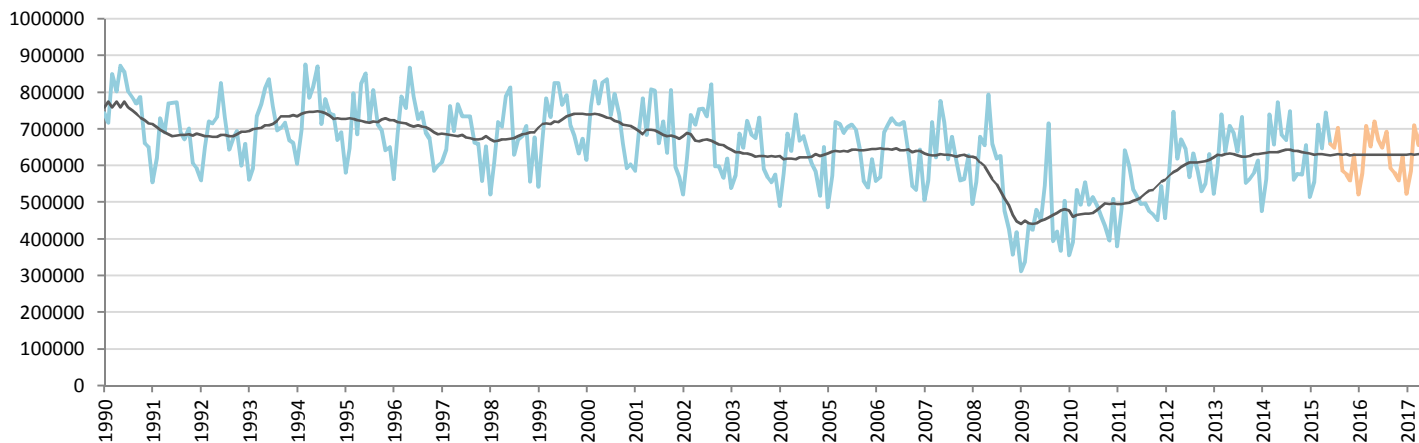
Car Sales Forecast : USA June 2015

Total	Jan.	Feb.	March	April	May	June	July	Aug.	Sept.	Oct.	Nov.	Dec.	YTD	FY
2015	1,145,924	1,252,466	1,537,820	1,448,354	1,627,289	1,470,613	1,468,286	1,569,321	1,345,055	1,348,508	1,350,537	1,512,507	8,482,466	17,076,681
YTY (%)	13.7	5.4	0.4	4.9	1.6	3.9	2.8	-0.6	8.6	5.9	4.4	1.0	4.4	3.9

Comment: In June the car sales increase by 3,9%. 2015 forecast is an increase of 3,9%.

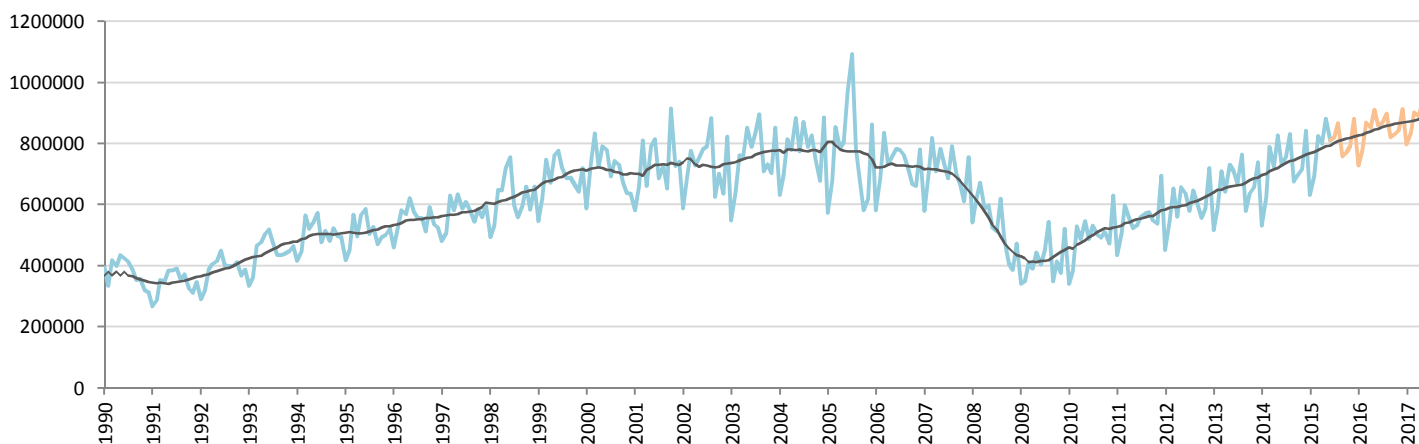
Forecast FY 2016 :	17,700,000	3.8%
--------------------	------------	------

Passenger Car excl. MPV and SUV



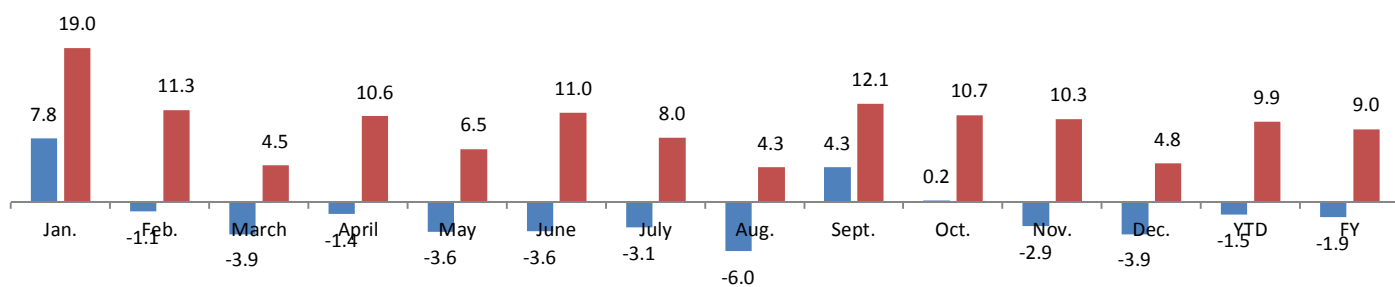
	Jan.	Feb.	March	April	May	June	July	Aug.	Sept.	Oct.	Nov.	Dec.	YTD	FY
2014	476,810	563,800	740,870	657,300	773,739	684,100	670,500	747,900	562,500	577,500	576,742	656,446	3,896,619	7,688,207
2015	514,238	557,542	711,800	647,943	745,533	659,595	649,703	702,777	586,585	578,498	559,893	630,601	3,836,651	7,544,708
YTY (%)	7.8	-1.1	-3.9	-1.4	-3.6	-3.6	-3.1	-6.0	4.3	0.2	-2.9	-3.9	-1.5	-1.9

Light Truck with MPV and SUV



	Jan.	Feb.	March	April	May	June	July	Aug.	Sept.	Oct.	Nov.	Dec.	YTD	FY
2014	530,900	624,100	790,342	723,905	827,710	730,800	758,200	830,900	676,400	695,600	717,135	841,764	4,227,757	8,747,756
2015	631,686	694,924	826,020	800,411	881,756	811,018	818,582	866,544	758,471	770,009	790,644	881,907	4,645,815	9,531,972
YTY (%)	19.0	11.3	4.5	10.6	6.5	11.0	8.0	4.3	12.1	10.7	10.3	4.8	9.9	9.0

YTY variations



Data source: