

Car Sales Forecast : SOUTH AFRICA June 2015

Total	Jan.	Feb.	March	April	May	June	July	Aug.	Sept.	Oct.	Nov.	Dec.	YTD	FY
2015	50,442	50,048	52,356	42,261	45,383	47,791	50,965	52,270	51,893	53,543	47,915	44,794	288,281	589,661
YTY (%)	-1.4	1.5	-0.6	-3.2	-3.1	-4.0	-7.4	-4.4	-10.7	-5.2	-0.9	-8.4	-1.7	-4.1

Comment: In June the car sales decrease by 4%. 2015 forecast is a decrease of 4,1%.

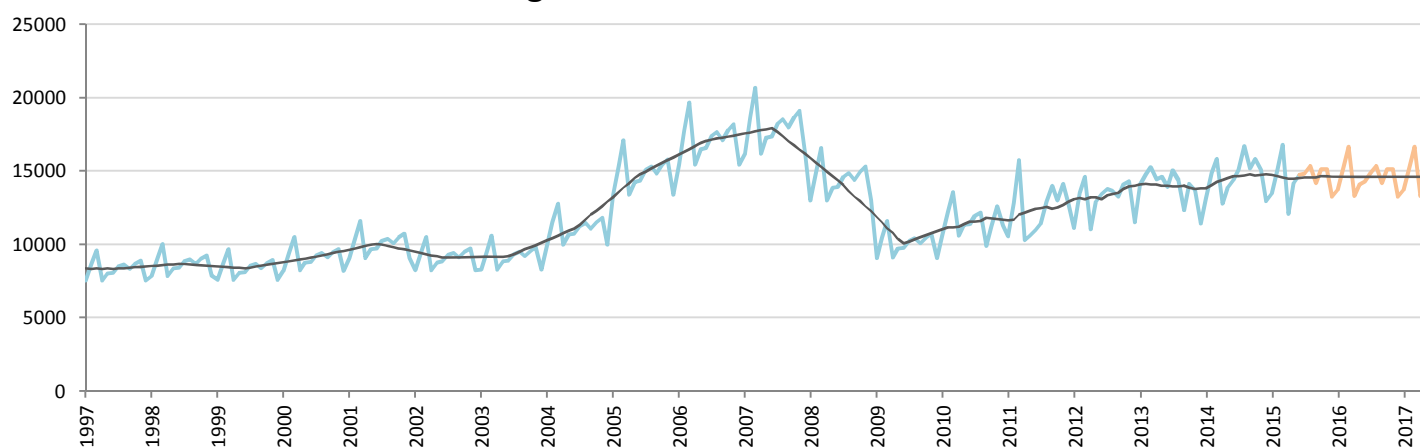
Forecast FY 2016 : 591,000 0.3%

Passenger Car



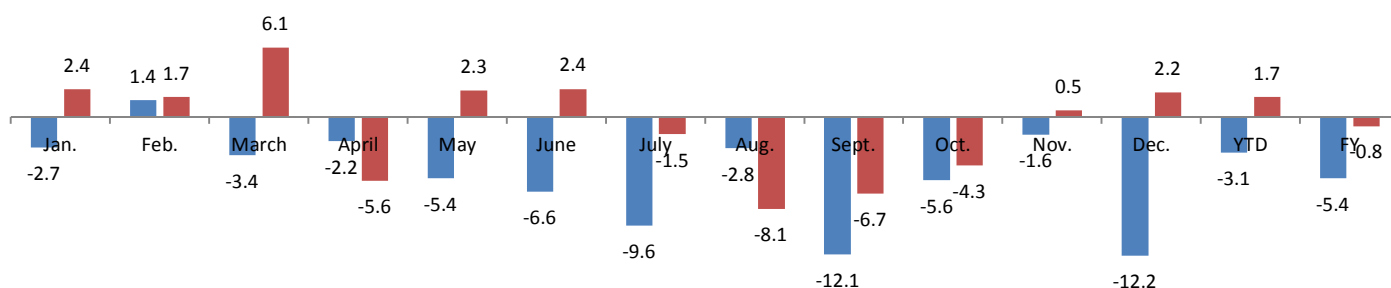
	Jan.	Feb.	March	April	May	June	July	Aug.	Sept.	Oct.	Nov.	Dec.	YTD	FY
2014	38,008	34,414	36,798	30,848	32,984	35,355	39,945	37,953	42,918	40,666	33,278	35,924	208,407	439,091
2015	36,982	34,909	35,548	30,184	31,201	33,035	36,116	36,905	37,734	38,392	32,759	31,549	201,859	415,313
YTY (%)	-2.7	1.4	-3.4	-2.2	-5.4	-6.6	-9.6	-2.8	-12.1	-5.6	-1.6	-12.2	-3.1	-5.4

Light Commercial Vehicles



	Jan.	Feb.	March	April	May	June	July	Aug.	Sept.	Oct.	Nov.	Dec.	YTD	FY
2014	13,145	14,879	15,848	12,796	13,866	14,405	15,081	16,716	15,179	15,827	15,076	12,965	84,939	175,783
2015	13,460	15,139	16,808	12,077	14,182	14,756	14,849	15,366	14,159	15,151	15,157	13,245	86,422	174,348
YTY (%)	2.4	1.7	6.1	-5.6	2.3	2.4	-1.5	-8.1	-6.7	-4.3	0.5	2.2	1.7	-0.8

YTY variations



Data source: CORAM, NAAMSA