

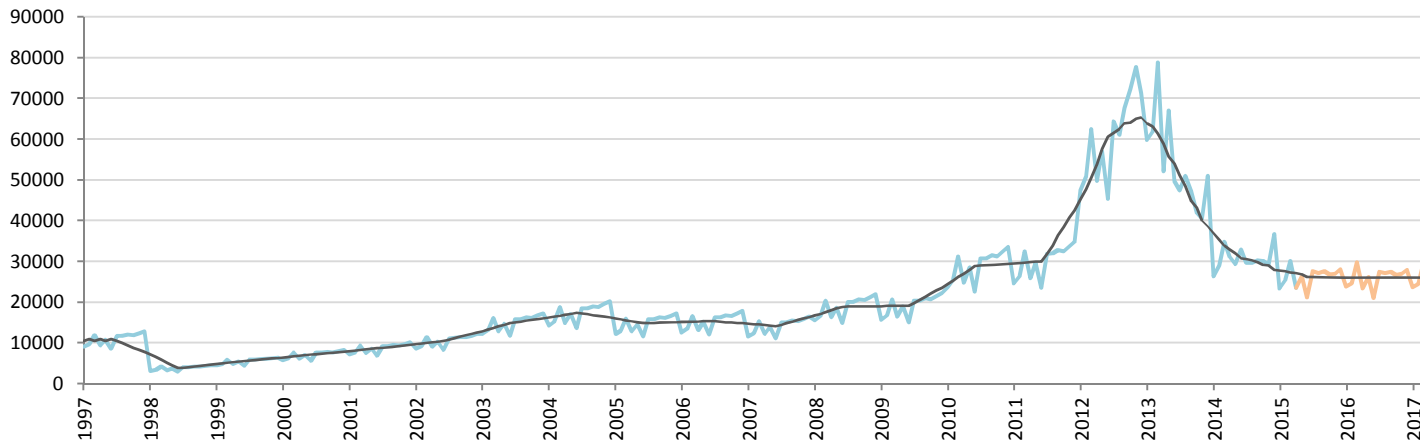
Car Sales Forecast : THAILAND April 2015

Total	Jan.	Feb.	March	April	May	June	July	Aug.	Sept.	Oct.	Nov.	Dec.	YTD	FY
2015	59,721	63,949	74,117	54,058	64,399	54,905	64,677	64,428	62,507	62,487	63,556	70,314	251,845	759,119
YTY (%)	-12.8	-10.8	-11.7	-26.2	-7.6	-25.6	-7.0	-6.0	-9.6	-11.8	-13.0	-21.4	-15.3	-13.9

Comment: In April the car sales decrease by 26,2%. 2015 forecast is a decrease of 13,9%.

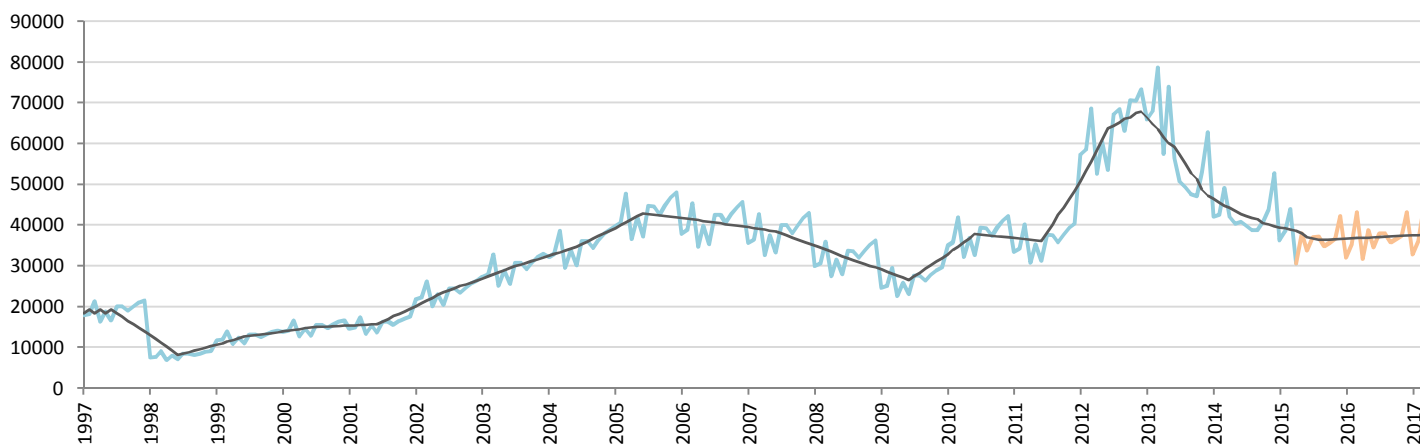
Forecast FY 2016 :	757,000	-0.3%
--------------------	---------	-------

Passenger Car



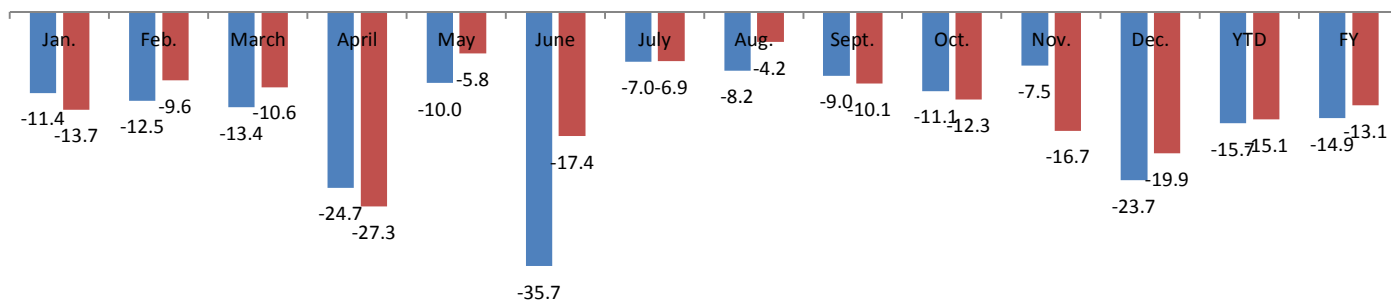
	Jan.	Feb.	March	April	May	June	July	Aug.	Sept.	Oct.	Nov.	Dec.	YTD	FY
2014	26,408	29,066	34,813	31,168	29,330	32,934	29,677	29,677	30,313	30,159	29,242	36,738	121,455	369,525
2015	23,405	25,425	30,140	23,470	26,399	21,170	27,587	27,229	27,587	26,810	27,038	28,038	102,440	314,300
YTY (%)	-11.4	-12.5	-13.4	-24.7	-10.0	-35.7	-7.0	-8.2	-9.0	-11.1	-7.5	-23.7	-15.7	-14.9

All Commercial Vehicles



	Jan.	Feb.	March	April	May	June	July	Aug.	Sept.	Oct.	Nov.	Dec.	YTD	FY
2014	42,102	42,614	49,170	42,092	40,351	40,865	39,850	38,845	38,824	40,691	43,826	52,766	175,978	511,996
2015	36,316	38,524	43,977	30,588	38,000	33,734	37,090	37,200	34,920	35,677	36,517	42,276	149,405	444,819
YTY (%)	-13.7	-9.6	-10.6	-27.3	-5.8	-17.4	-6.9	-4.2	-10.1	-12.3	-16.7	-19.9	-15.1	-13.1

YTY variations



Data source: TAI A