

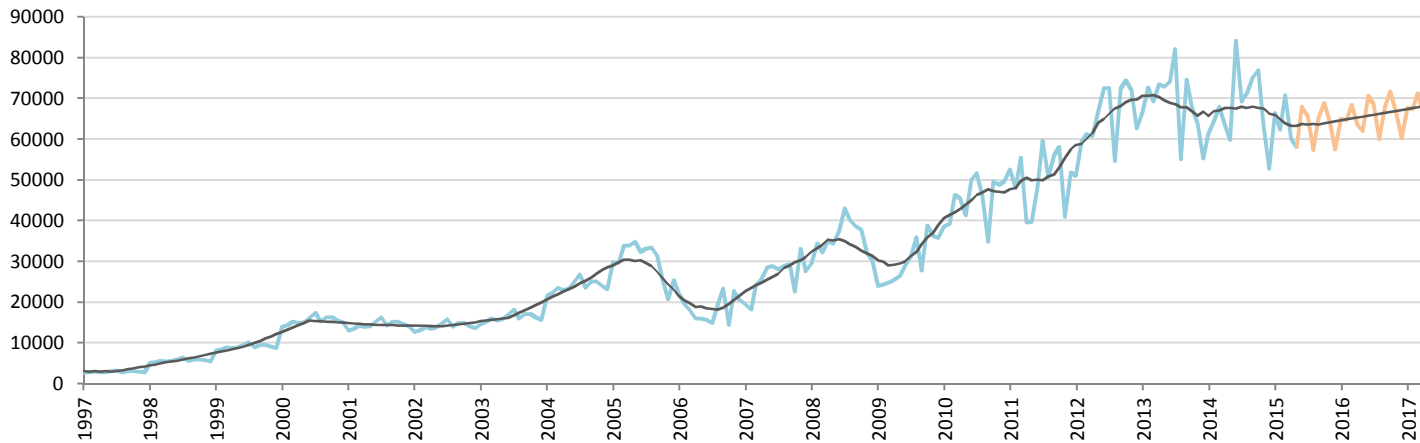
# Car Sales Forecast : INDONESIA May 2015

Total	Jan.	Feb.	March	April	May	June	July	Aug.	Sept.	Oct.	Nov.	Dec.	YTD	FY
2015	94,194	88,741	98,710	81,600	79,236	91,620	89,348	78,219	88,685	93,121	87,587	79,520	442,481	1,050,580
YTY (%)	5.5	-7.2	-0.9	-11.7	-6.7	-17.2	-2.2	-19.1	-13.7	-11.6	-4.0	0.9	-4.2	-7.7

Comment: In May the car sales decrease by 6,7%. 2015 forecast is a decrease of 7,7%.

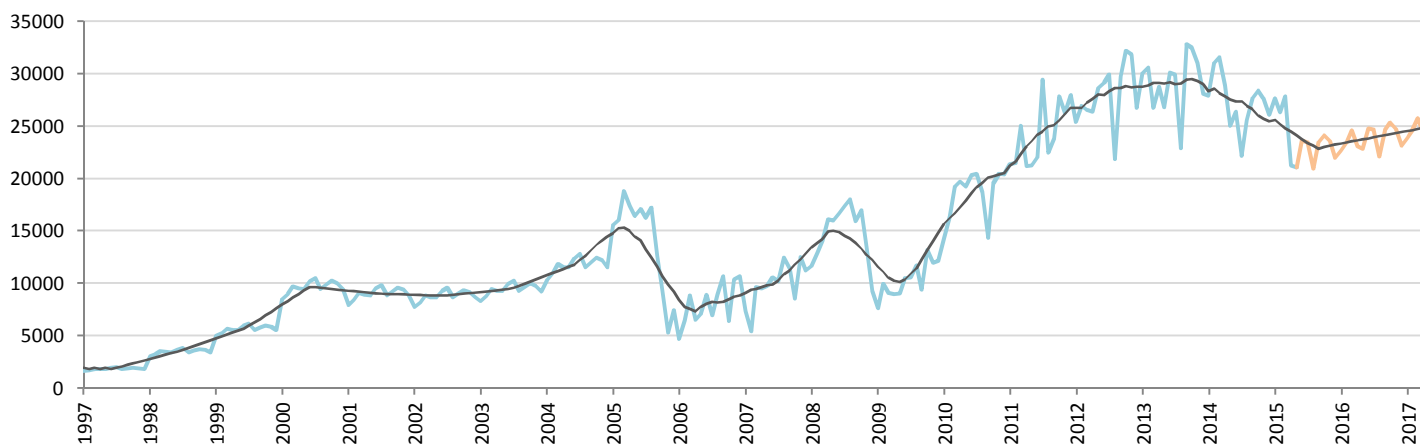
Forecast FY 2016 :	1,080,000	2.4%
--------------------	-----------	------

## Passenger Car



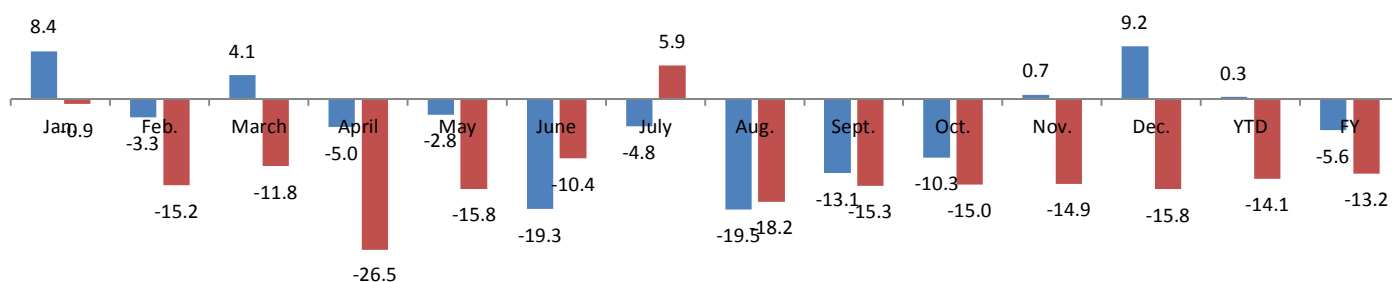
	Jan.	Feb.	March	April	May	June	July	Aug.	Sept.	Oct.	Nov.	Dec.	YTD	FY
2014	61,373	64,554	68,048	63,520	59,840	84,282	69,205	71,161	75,034	76,929	63,578	52,695	317,335	810,219
2015	66,507	62,413	70,849	60,349	58,137	67,993	65,861	57,295	65,232	68,971	64,030	57,549	318,255	765,187
YTY (%)	8.4	-3.3	4.1	-5.0	-2.8	-19.3	-4.8	-19.5	-13.1	-10.3	0.7	9.2	0.3	-5.6

## All Commercial Vehicles



	Jan.	Feb.	March	April	May	June	July	Aug.	Sept.	Oct.	Nov.	Dec.	YTD	FY
2014	27,936	31,056	31,605	28,918	25,063	26,378	22,188	25,567	27,677	28,428	27,690	26,107	144,578	328,613
2015	27,687	26,328	27,861	21,251	21,099	23,626	23,487	20,924	23,452	24,150	23,556	21,971	124,226	285,393
YTY (%)	-0.9	-15.2	-11.8	-26.5	-15.8	-10.4	5.9	-18.2	-15.3	-15.0	-14.9	-15.8	-14.1	-13.2

## YTY variations



Data source: CORAM,GAIKINDO