

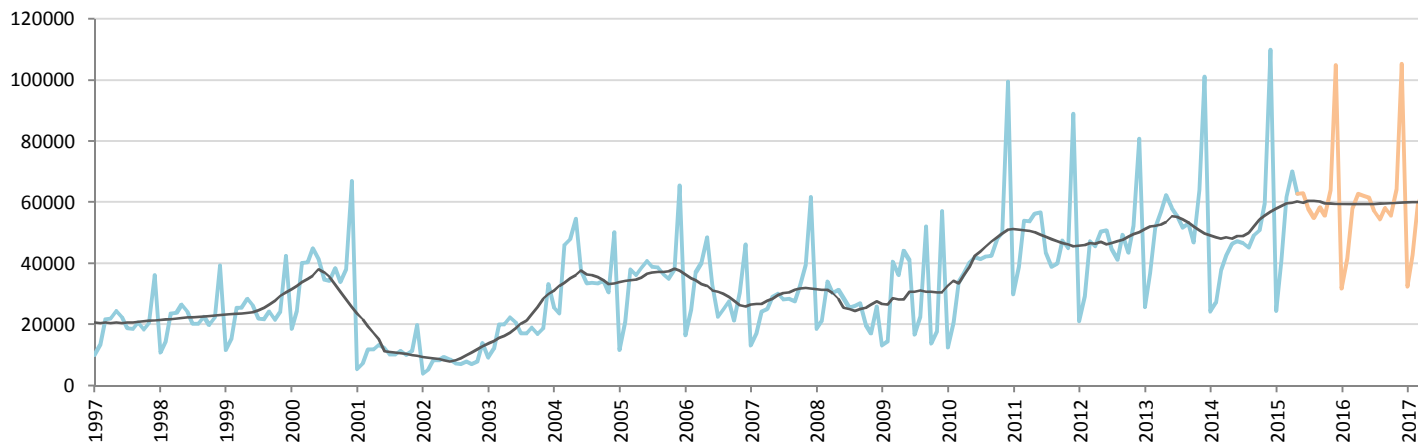
Car Sales Forecast : TURKEY May 2015

Total	Jan.	Feb.	March	April	May	June	July	Aug.	Sept.	Oct.	Nov.	Dec.	YTD	FY
2015	34,615	55,331	83,302	91,602	81,542	80,703	74,336	71,556	77,122	71,634	81,903	136,829	346,392	940,475
YTY (%)	6.0	58.0	75.1	71.8	40.3	34.1	24.1	18.9	15.9	7.6	1.6	-6.9	52.8	22.5

Comment: In May the car sales increase by 40,3%. 2015 forecast is an increase of 22,5%.

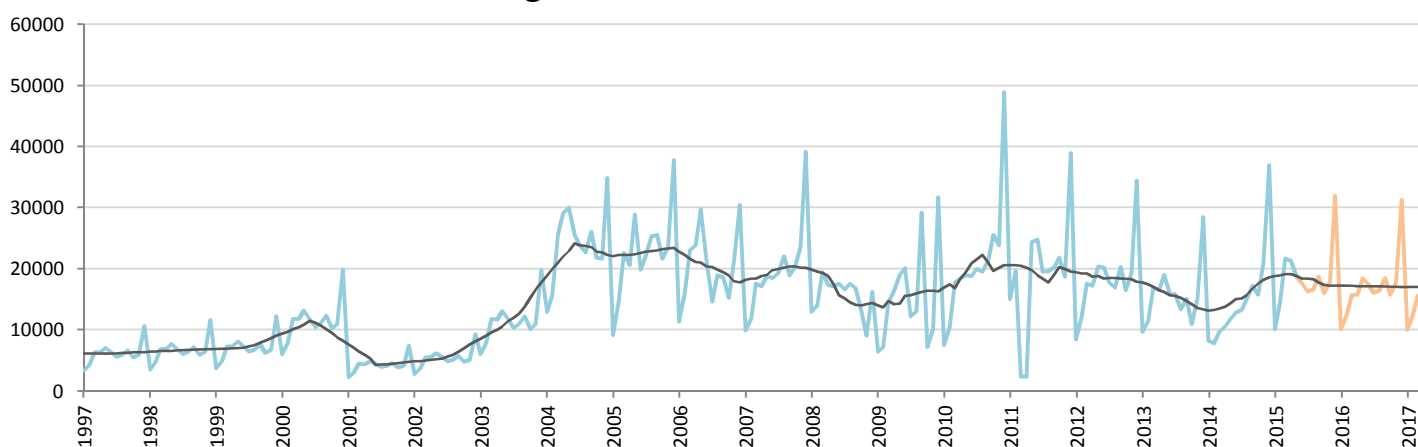
Forecast FY 2016 : 919,000 -2.3%

Passenger Car



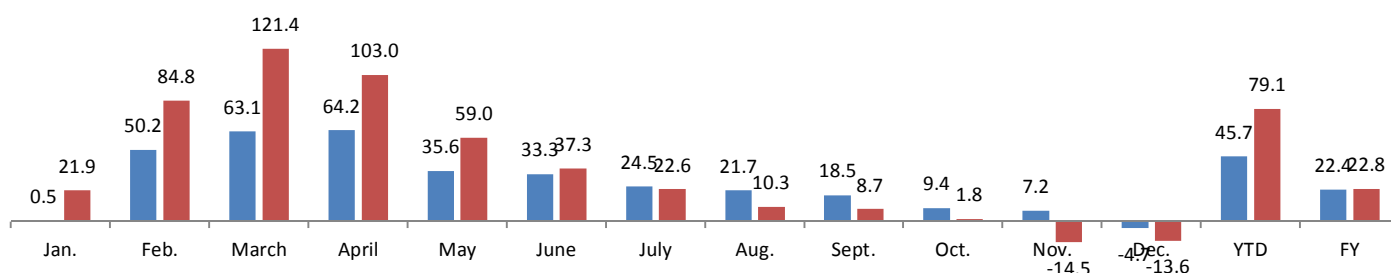
	Jan.	Feb.	March	April	May	June	July	Aug.	Sept.	Oct.	Nov.	Dec.	YTD	FY
2014	24,368	27,167	37,812	42,769	46,379	47,278	46,602	45,131	49,262	50,814	59,695	110,054	178,495	587,331
2015	24,498	40,817	61,676	70,211	62,878	63,013	58,023	54,943	58,357	55,595	64,016	104,927	260,080	718,954
YTY (%)	0.5	50.2	63.1	64.2	35.6	33.3	24.5	21.7	18.5	9.4	7.2	-4.7	45.7	22.4

Light Commercial Vehicles



	Jan.	Feb.	March	April	May	June	July	Aug.	Sept.	Oct.	Nov.	Dec.	YTD	FY
2014	8,302	7,854	9,769	10,536	11,742	12,885	13,305	15,068	17,269	15,759	20,926	36,935	48,203	180,350
2015	10,117	14,514	21,626	21,391	18,664	17,690	16,313	16,613	18,765	16,039	17,886	31,902	86,312	221,520
YTY (%)	21.9	84.8	121.4	103.0	59.0	37.3	22.6	10.3	8.7	1.8	-14.5	-13.6	79.1	22.8

YTY variations



Data source: CORAM,OSD