

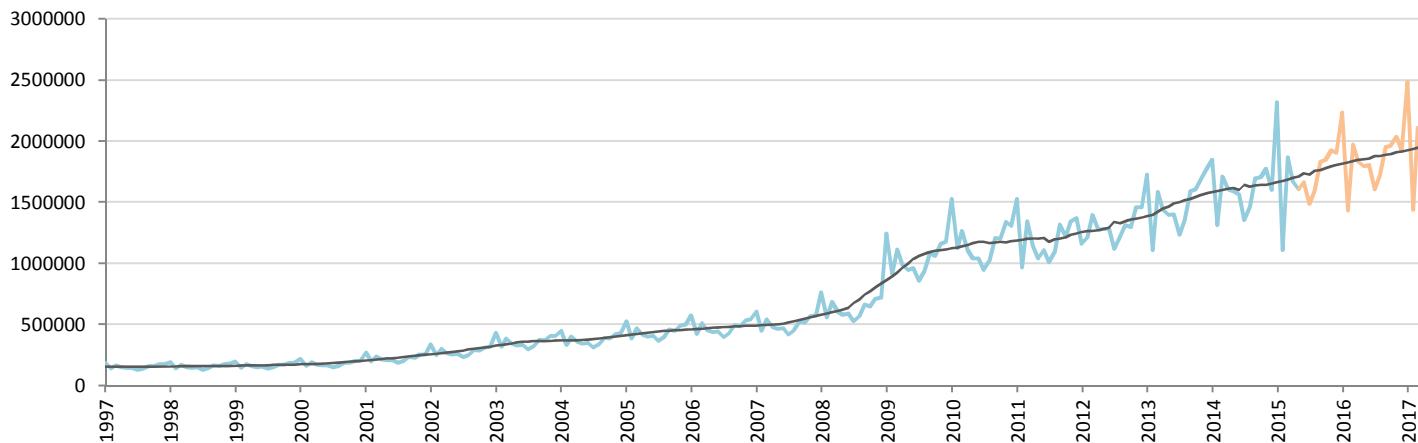
Car Sales Forecast : CHINA May 2015

Total	Jan.	Feb.	March	April	May	June	July	Aug.	Sept.	Oct.	Nov.	Dec.	YTD	FY
2015	2,601,200	1,308,800	2,240,600	1,994,500	1,903,800	1,930,455	1,701,464	1,827,862	2,102,099	2,105,755	2,210,794	2,202,376	10,048,900	24,129,705
YTY (%)	20.6	-18.0	3.3	-0.5	-0.4	4.6	5.2	6.5	6.0	6.0	5.7	12.6	2.2	4.8

Comment: In May the car sales decrease by 0,4%. 2015 forecast is an increase of 4,8%.

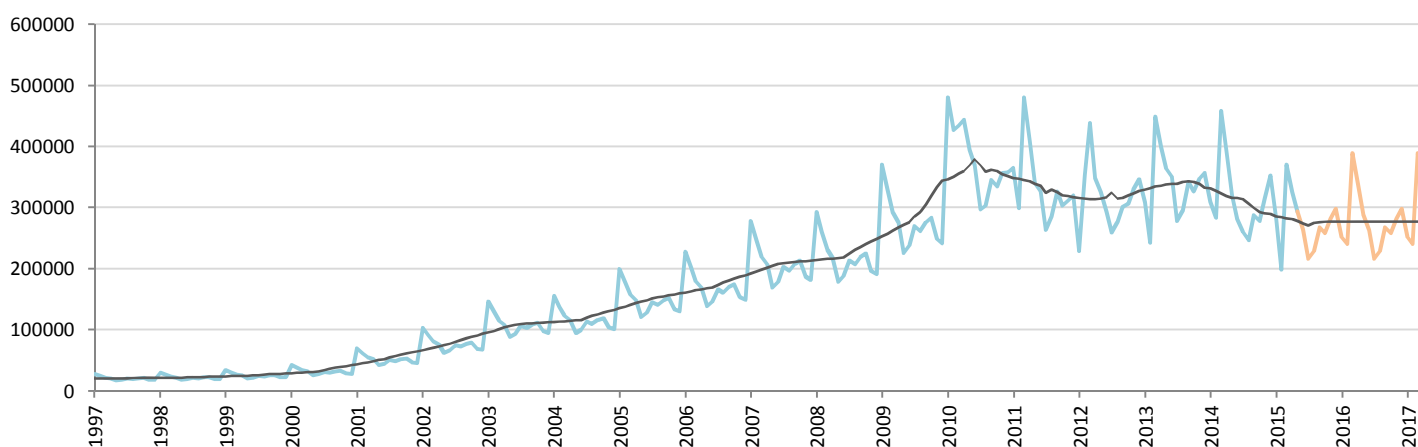
Forecast FY 2016 : 25,600,000 6.1%

Passenger Car



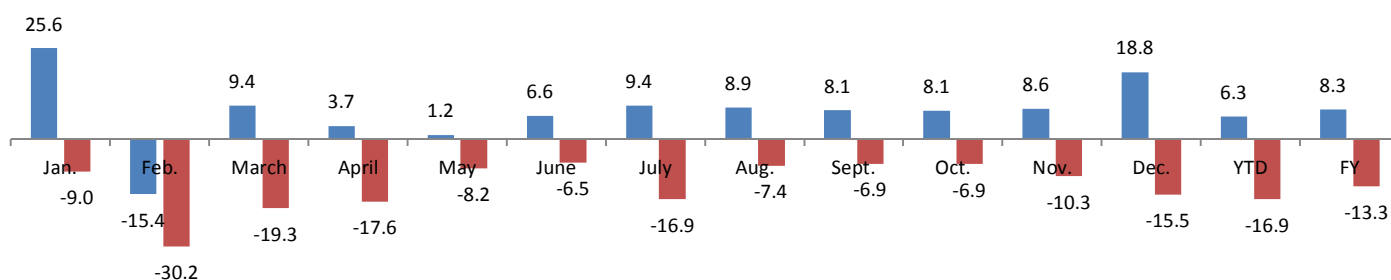
	Jan.	Feb.	March	April	May	June	July	Aug.	Sept.	Oct.	Nov.	Dec.	YTD	FY
2014	1,846,900	1,312,200	1,709,689	1,609,000	1,590,400	1,564,100	1,357,900	1,468,200	1,696,000	1,708,900	1,775,300	1,602,600	8,068,189	19,241,189
2015	2,319,600	1,110,400	1,870,400	1,668,800	1,609,300	1,667,083	1,485,315	1,598,867	1,834,220	1,846,696	1,927,786	1,904,380	8,578,500	20,842,847
YTY (%)	25.6	-15.4	9.4	3.7	1.2	6.6	9.4	8.9	8.1	8.1	8.6	18.8	6.3	8.3

All Commercial Vehicles



	Jan.	Feb.	March	April	May	June	July	Aug.	Sept.	Oct.	Nov.	Dec.	YTD	FY
2014	309,500	284,200	459,000	395,200	320,800	281,700	260,200	247,400	287,600	278,300	315,600	352,700	1,768,700	3,792,200
2015	281,600	198,400	370,200	325,700	294,500	263,371	216,149	228,995	267,879	259,059	283,009	297,996	1,470,400	3,286,858
YTY (%)	-9.0	-30.2	-19.3	-17.6	-8.2	-6.5	-16.9	-7.4	-6.9	-6.9	-10.3	-15.5	-16.9	-13.3

YTY variations



Data source: CORAM,CAAM