

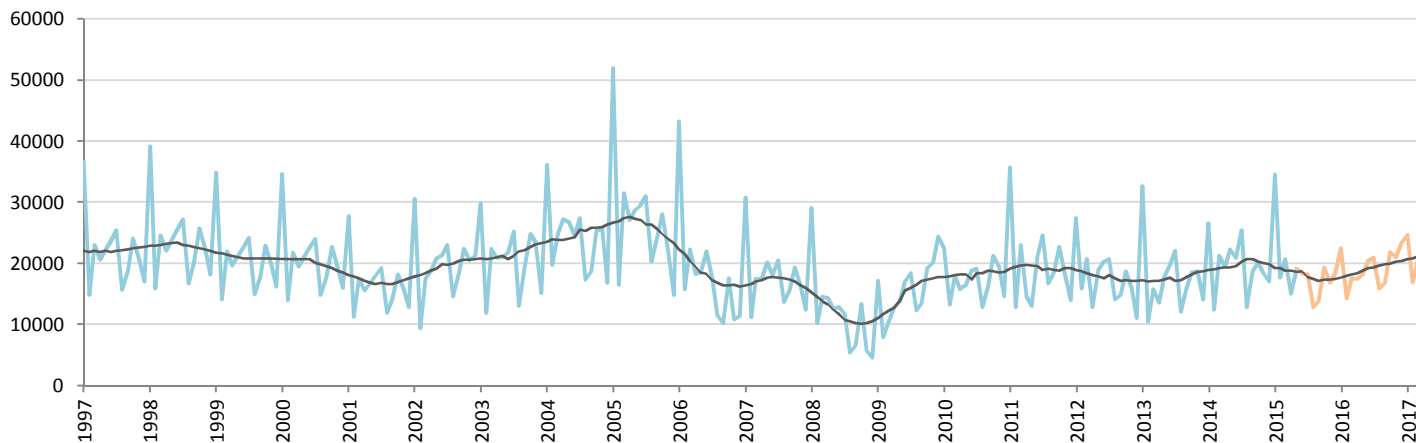
Car Sales Forecast : TAIWAN May 2015

Total	Jan.	Feb.	March	April	May	June	July	Aug.	Sept.	Oct.	Nov.	Dec.	YTD	FY
2015	40,472	20,936	25,532	19,100	23,496	21,941	22,169	16,050	17,457	23,964	20,666	22,734	129,536	274,516
YTY (%)	23.9	40.1	0.7	-17.1	-10.6	-11.0	-23.5	3.3	-20.9	0.1	-2.7	14.6	5.9	-1.4

Comment: In May the car sales decrease by 10,6%. 2015 forecast is a decrease of 1,4%.

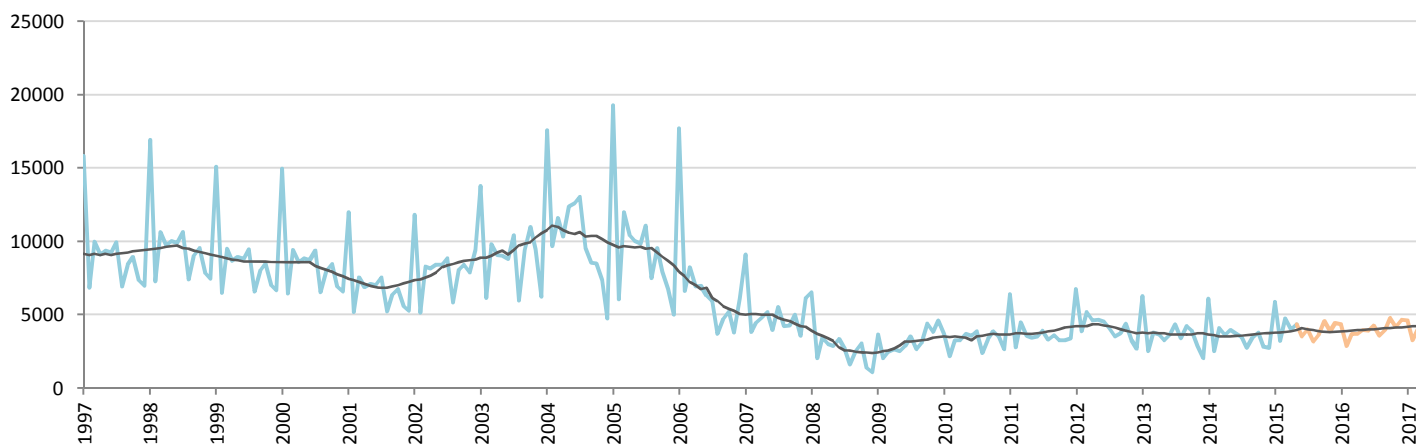
Forecast FY 2016 :	279,000	1.5%
--------------------	---------	------

Passenger Car



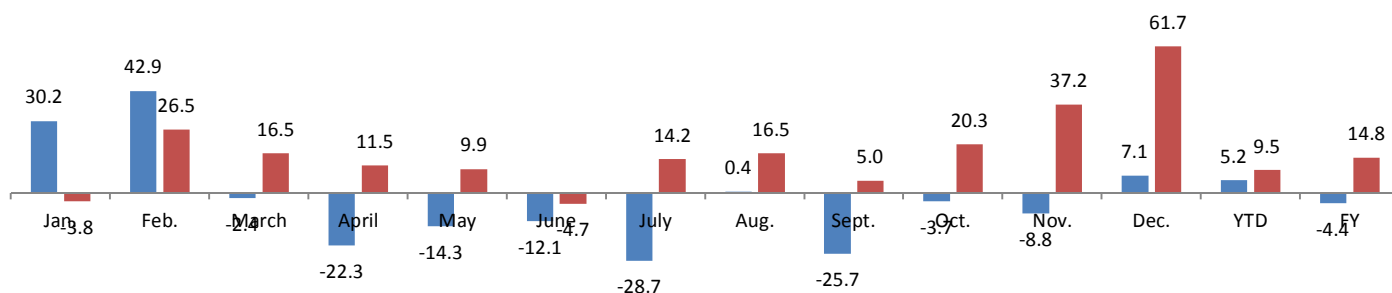
	Jan.	Feb.	March	April	May	June	July	Aug.	Sept.	Oct.	Nov.	Dec.	YTD	FY
2014	26,568	12,409	21,271	19,430	22,305	20,924	25,472	12,823	18,615	20,146	18,424	17,093	101,983	235,480
2015	34,600	17,734	20,770	15,091	19,121	18,395	18,170	12,879	13,838	19,409	16,805	18,307	107,316	225,118
YTY (%)	30.2	42.9	-2.4	-22.3	-14.3	-12.1	-28.7	0.4	-25.7	-3.7	-8.8	7.1	5.2	-4.4

Light Commercial Vehicles



	Jan.	Feb.	March	April	May	June	July	Aug.	Sept.	Oct.	Nov.	Dec.	YTD	FY
2014	6,102	2,531	4,087	3,597	3,980	3,720	3,503	2,721	3,446	3,786	2,814	2,738	20,297	43,025
2015	5,872	3,202	4,762	4,009	4,375	3,546	3,999	3,171	3,619	4,554	3,861	4,427	22,220	49,398
YTY (%)	-3.8	26.5	16.5	11.5	9.9	-4.7	14.2	16.5	5.0	20.3	37.2	61.7	9.5	14.8

YTY variations



Data source: CORAM,TTVMA. Local manufacturers only