

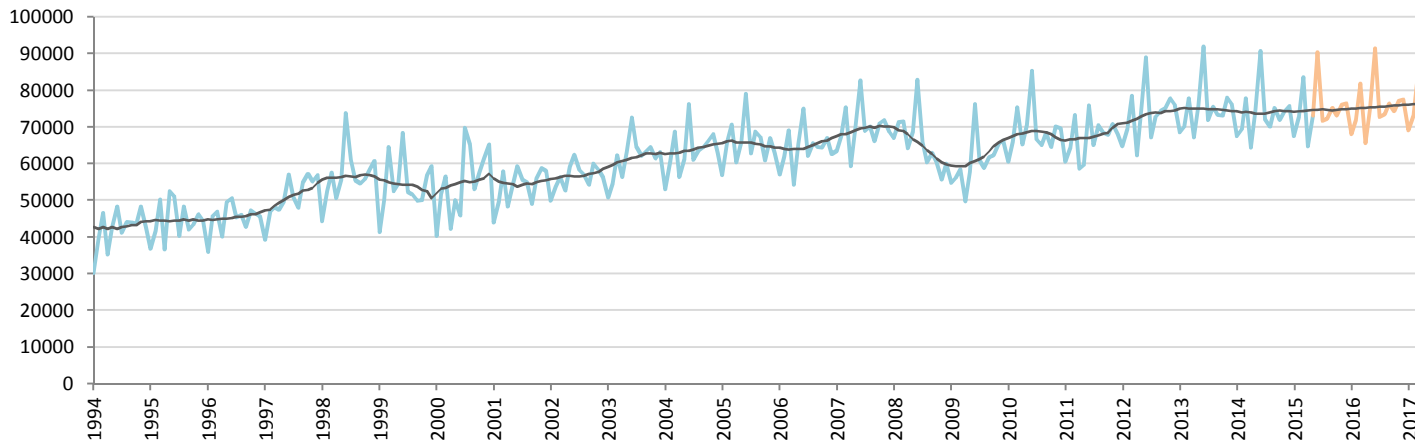
Car Sales Forecast : AUSTRALIA May 2015

Total	Jan.	Feb.	March	April	May	June	July	Aug.	Sept.	Oct.	Nov.	Dec.	YTD	FY
2015	82,116	90,424	105,054	81,656	93,327	117,624	89,606	90,688	95,385	92,944	94,829	97,602	452,577	1,131,256
YTY (%)	-0.2	4.2	8.0	1.2	-1.3	-0.6	-0.3	2.9	0.4	1.9	2.8	0.8	2.5	1.6

Comment: In May the car sales decrease by 1,3%. 2015 forecast is an increase of 1,6%.

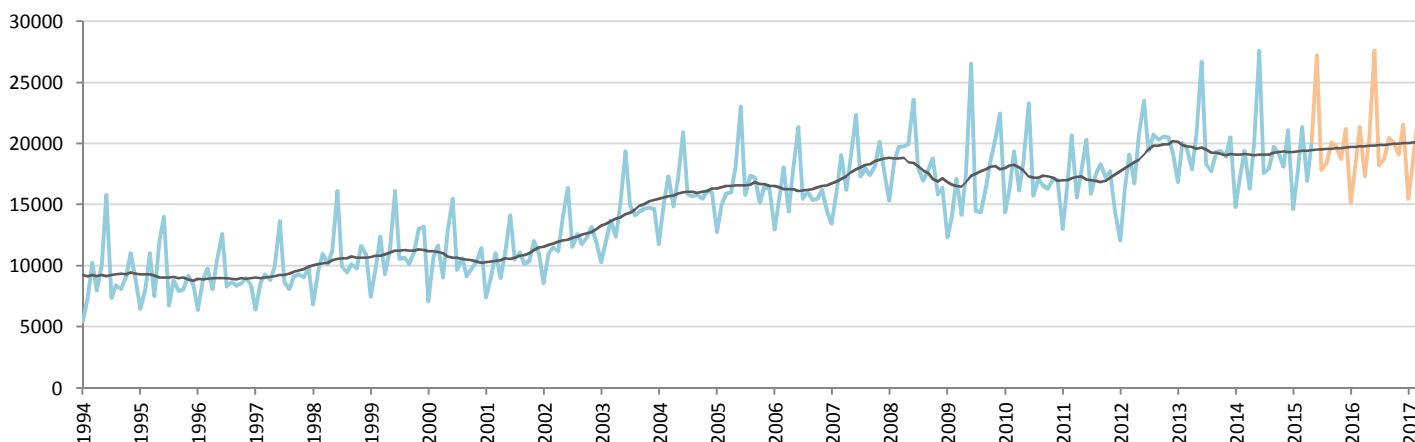
Forecast FY 2016 :	1,140,000	1.1%
--------------------	-----------	------

Passenger Car



	Jan.	Feb.	March	April	May	June	July	Aug.	Sept.	Oct.	Nov.	Dec.	YTD	FY
2014	67,494	69,518	77,857	64,377	74,549	90,690	72,269	70,201	75,221	71,961	74,095	75,717	353,795	883,949
2015	67,478	72,814	83,688	64,679	73,122	90,384	71,734	72,305	75,282	73,160	76,079	76,394	361,781	897,118
YTY (%)	0.0	4.7	7.5	0.5	-1.9	-0.3	-0.7	3.0	0.1	1.7	2.7	0.9	2.3	1.5

All Commercial Vehicles



	Jan.	Feb.	March	April	May	June	July	Aug.	Sept.	Oct.	Nov.	Dec.	YTD	FY
2014	14,791	17,300	19,410	16,333	20,013	27,619	17,598	17,956	19,757	19,275	18,137	21,092	87,847	229,281
2015	14,638	17,610	21,366	16,977	20,205	27,240	17,872	18,384	20,103	19,785	18,750	21,208	90,796	234,137
YTY (%)	-1.0	1.8	10.1	3.9	1.0	-1.4	1.6	2.4	1.8	2.6	3.4	0.6	3.4	2.1

YTY variations

