

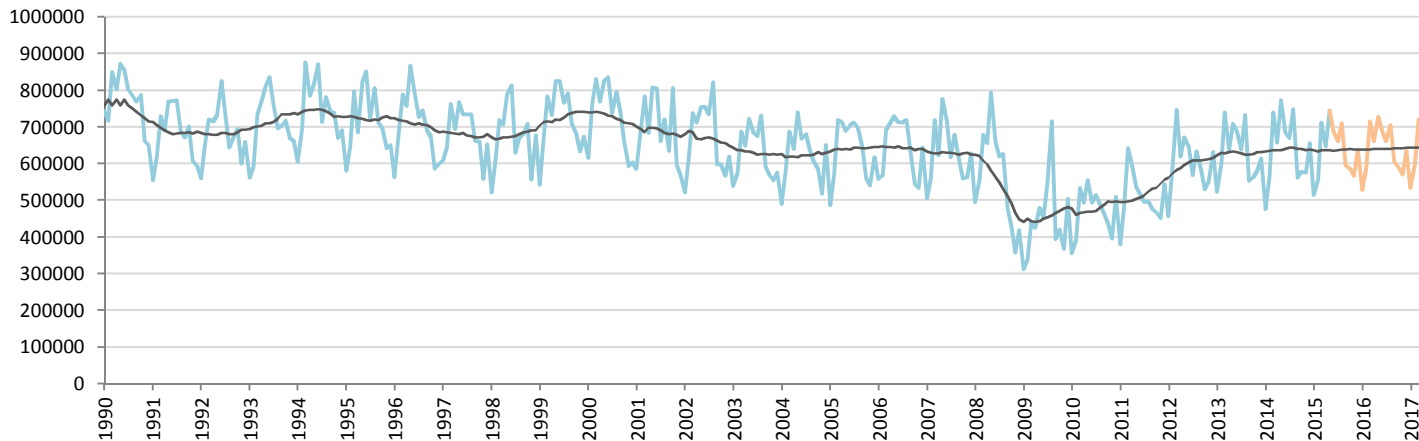
# Car Sales Forecast : USA May 2015

Total	Jan.	Feb.	March	April	May	June	July	Aug.	Sept.	Oct.	Nov.	Dec.	YTD	FY
<b>2015</b>	1,145,924	1,252,466	1,537,820	1,448,354	1,627,289	1,502,013	1,473,550	1,579,604	1,357,460	1,360,506	1,352,110	1,528,038	7,011,853	17,165,135
<b>YTY (%)</b>	13.7	5.4	0.4	4.9	1.6	6.2	3.1	0.1	9.6	6.9	4.5	2.0	4.5	4.4

Comment: In May the car sales increase by 1,6%. 2015 forecast is an increase of 4,4%.

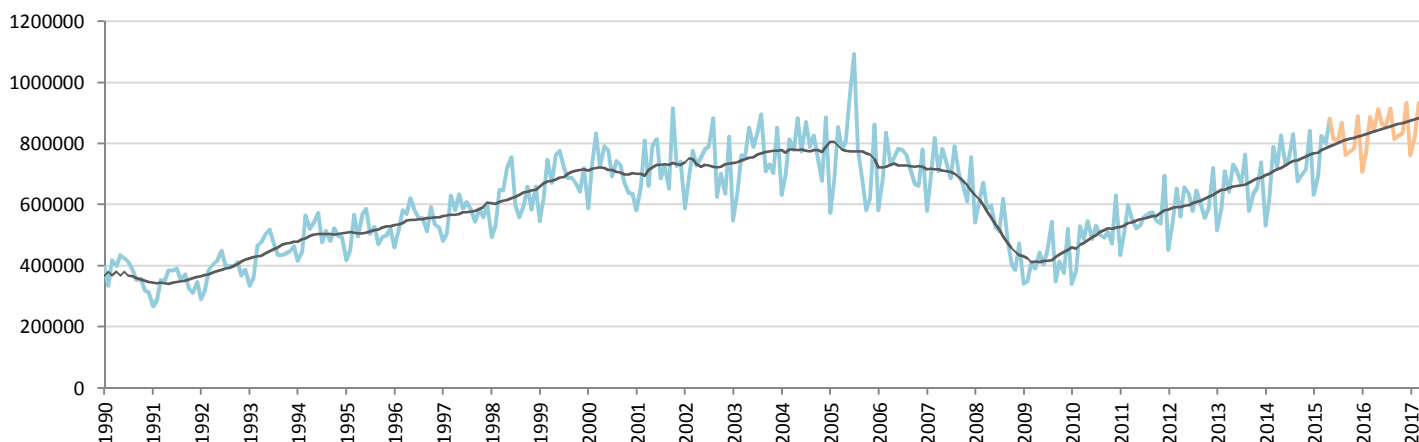
Forecast FY 2016 : 17,800,000 4.0%

## Passenger Car excl. MPV and SUV



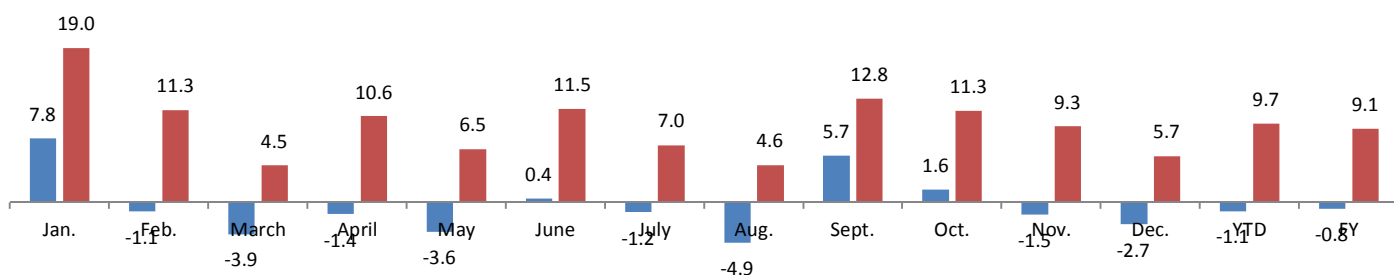
	Jan.	Feb.	March	April	May	June	July	Aug.	Sept.	Oct.	Nov.	Dec.	YTD	FY
<b>2014</b>	476,810	563,800	740,870	657,300	773,739	684,100	670,500	747,900	562,500	577,500	576,742	656,446	3,212,519	7,688,207
<b>2015</b>	514,238	557,542	711,800	647,943	745,533	687,148	662,175	710,880	594,725	586,627	567,938	638,635	3,177,056	7,625,184
<b>YTY (%)</b>	7.8	-1.1	-3.9	-1.4	-3.6	0.4	-1.2	-4.9	5.7	1.6	-1.5	-2.7	-1.1	-0.8

## Light Truck with MPV and SUV



	Jan.	Feb.	March	April	May	June	July	Aug.	Sept.	Oct.	Nov.	Dec.	YTD	FY
<b>2014</b>	530,900	624,100	790,342	723,905	827,710	730,800	758,200	830,900	676,400	695,600	717,135	841,764	3,496,957	8,747,756
<b>2015</b>	631,686	694,924	826,020	800,411	881,756	814,865	811,375	868,724	762,735	773,879	784,172	889,403	3,834,797	9,539,950
<b>YTY (%)</b>	19.0	11.3	4.5	10.6	6.5	11.5	7.0	4.6	12.8	11.3	9.3	5.7	9.7	9.1

## YTY variations



Data source: