

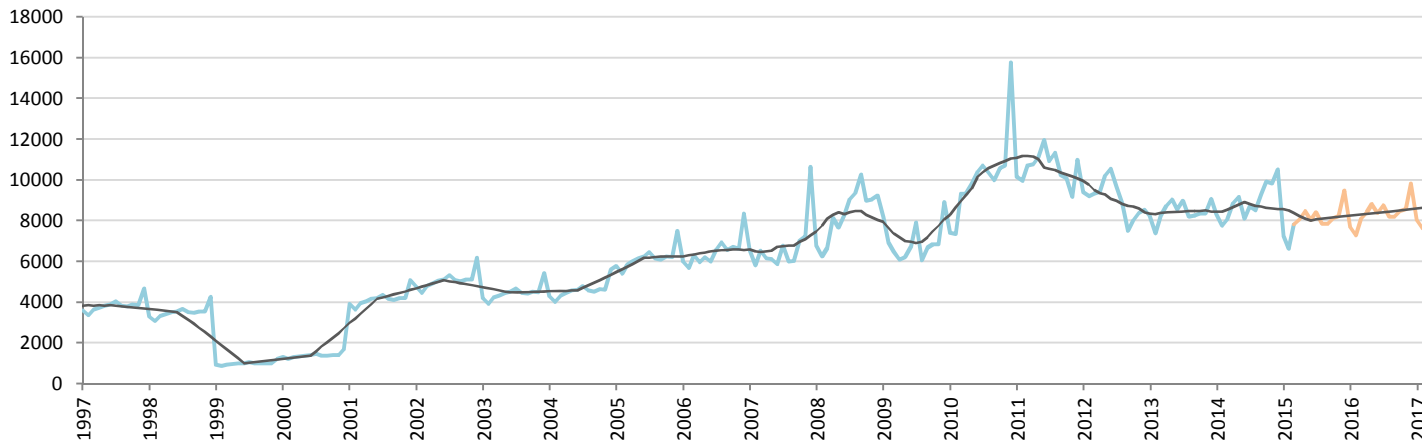
# Car Sales Forecast : ECUADOR March 2015

Total	Jan.	Feb.	March	April	May	June	July	Aug.	Sept.	Oct.	Nov.	Dec.	YTD	FY
2015	8,278	7,564	9,313	9,375	9,802	9,366	9,738	9,174	9,192	9,468	9,554	10,836	25,155	111,659
YTY (%)	-11.9	-13.5	4.1	-4.1	-3.1	2.0	-0.9	-5.2	-11.9	-14.8	-13.2	-8.1	-7.1	-7.0

Comment: In March the car sales increase by 4,1%. 2015 forecast is a decrease of 7%.

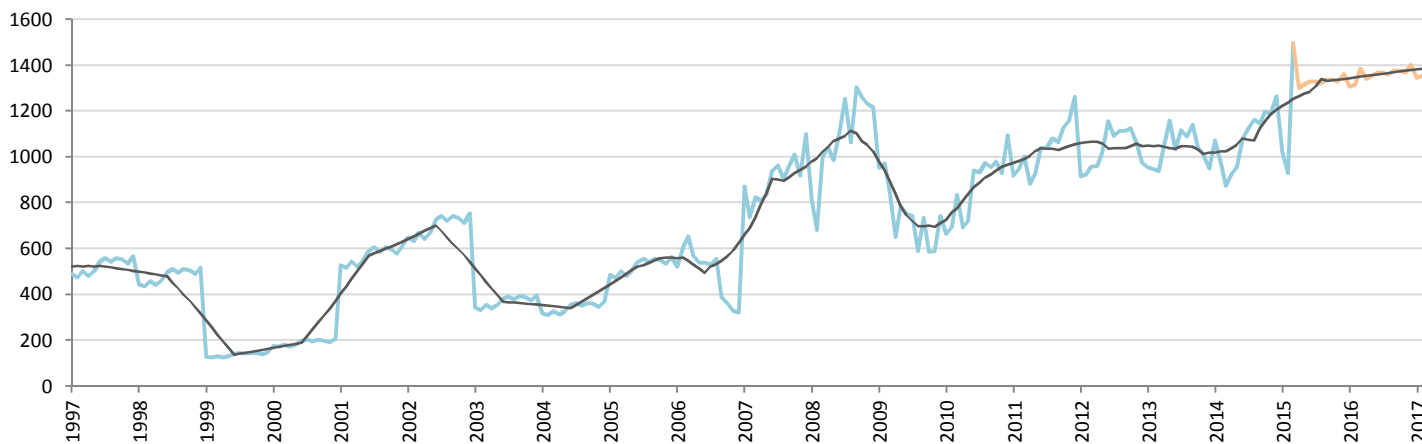
Forecast FY 2016 :	117,000	4.8%
--------------------	---------	------

## Passenger Car



	Jan.	Feb.	March	April	May	June	July	Aug.	Sept.	Oct.	Nov.	Dec.	YTD	FY
2014	8,330	7,772	8,070	8,849	9,158	8,102	8,706	8,514	9,290	9,916	9,820	10,526	24,172	107,053
2015	7,256	6,634	7,815	8,073	8,486	8,036	8,407	7,852	7,855	8,131	8,226	9,474	21,705	96,246
YTY (%)	-12.9	-14.6	-3.2	-8.8	-7.3	-0.8	-3.4	-7.8	-15.4	-18.0	-16.2	-10.0	-10.2	-10.1

## All Commercial Vehicles



	Jan.	Feb.	March	April	May	June	July	Aug.	Sept.	Oct.	Nov.	Dec.	YTD	FY
2014	1,071	975	873	926	956	1,078	1,124	1,161	1,146	1,198	1,190	1,264	2,919	12,962
2015	1,022	930	1,498	1,301	1,316	1,330	1,330	1,322	1,336	1,337	1,328	1,362	3,450	15,413
YTY (%)	-4.6	-4.6	71.6	40.5	37.6	23.4	18.3	13.9	16.6	11.6	11.6	7.8	18.2	18.9

## YTY variations

