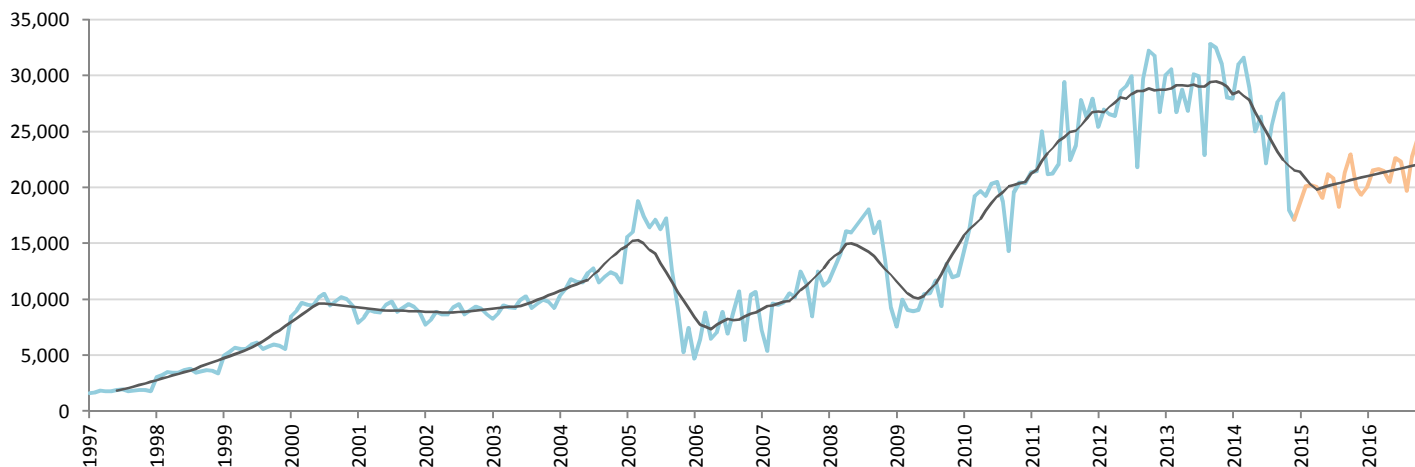


# Car Market Forecast : INDONESIA CV December 2014

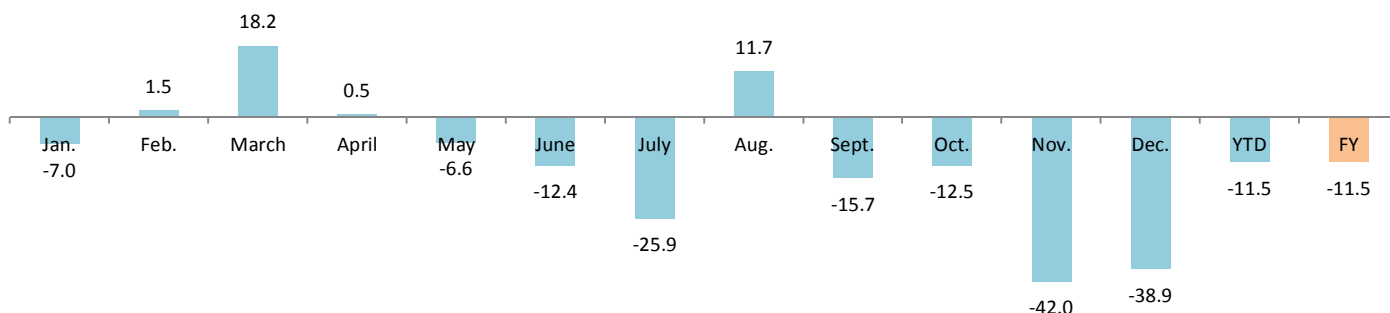
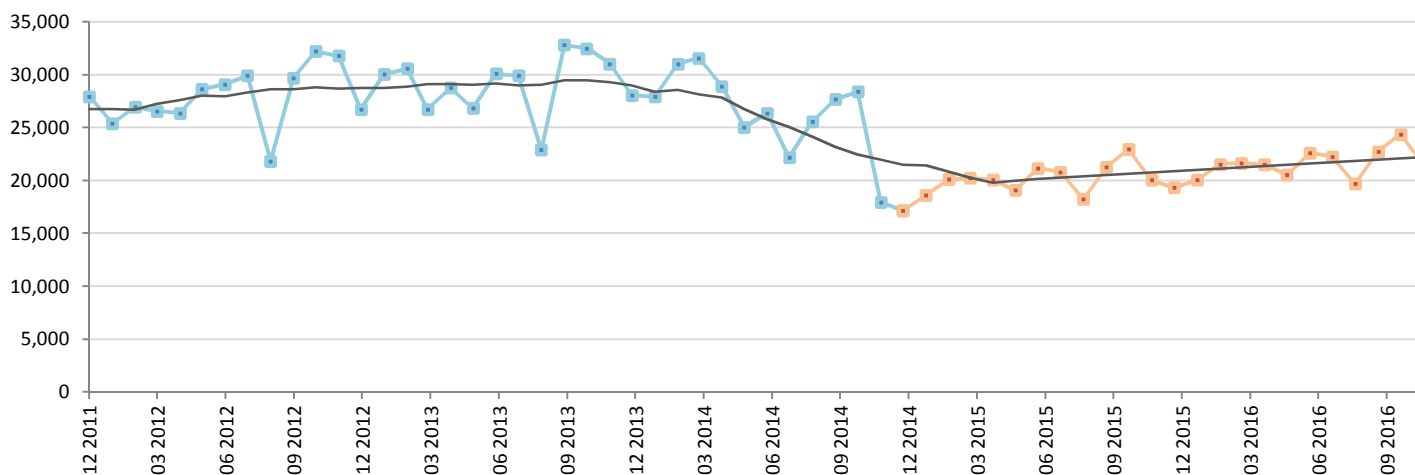
MTM (%) -2.7      YTY (%) -38.9      YTD (%) -11.5      FY (%) -11.5      FY 2014 = 309,963

Comment : The market drops in December



	Jan.	Feb.	March	April	May	June	July	Aug.	Sept.	Oct.	Nov.	Dec.	YTD	FY
<b>2013</b>	30,044	30,597	26,749	28,772	26,839	30,110	29,945	22,897	32,822	32,491	31,043	28,085	350,394	350,394
<b>2014</b>	27,936	31,056	31,605	28,918	25,063	26,378	22,188	25,567	27,677	28,428	17,990	17,157	309,963	309,963
<b>2015</b>	18,631	20,121	20,242	20,083	19,106	21,197	20,836	18,258	21,320	22,965	20,071	19,350	242,179	242,179
<b>YTY (%)</b>	-7.0	1.5	18.2	0.5	-6.6	-12.4	-25.9	11.7	-15.7	-12.5	-42.0	-38.9	-11.5	-11.5

Actual data      Forecast



Data source: CORAM, GAIKINDO