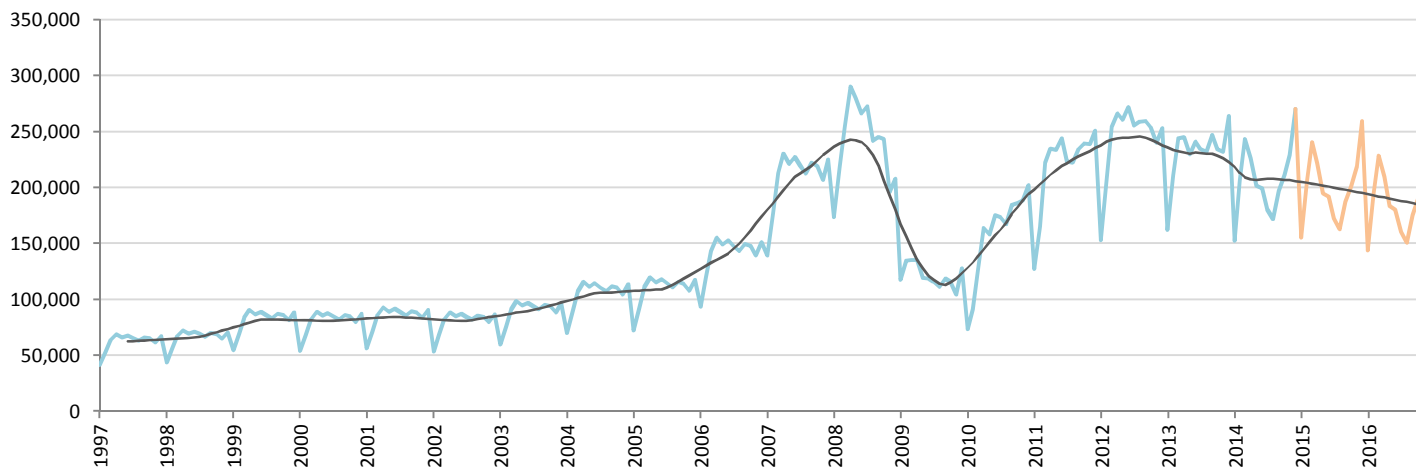


# Car Market Forecast : RUSSIA TOT December 2014

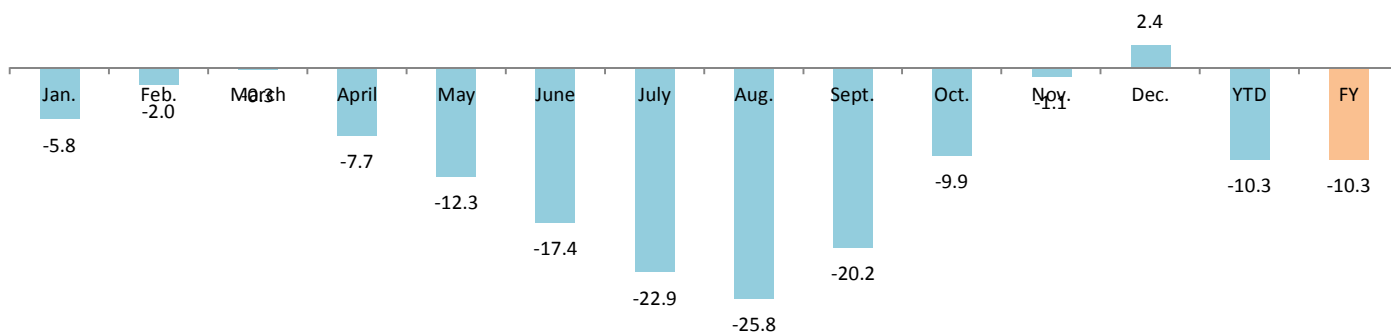
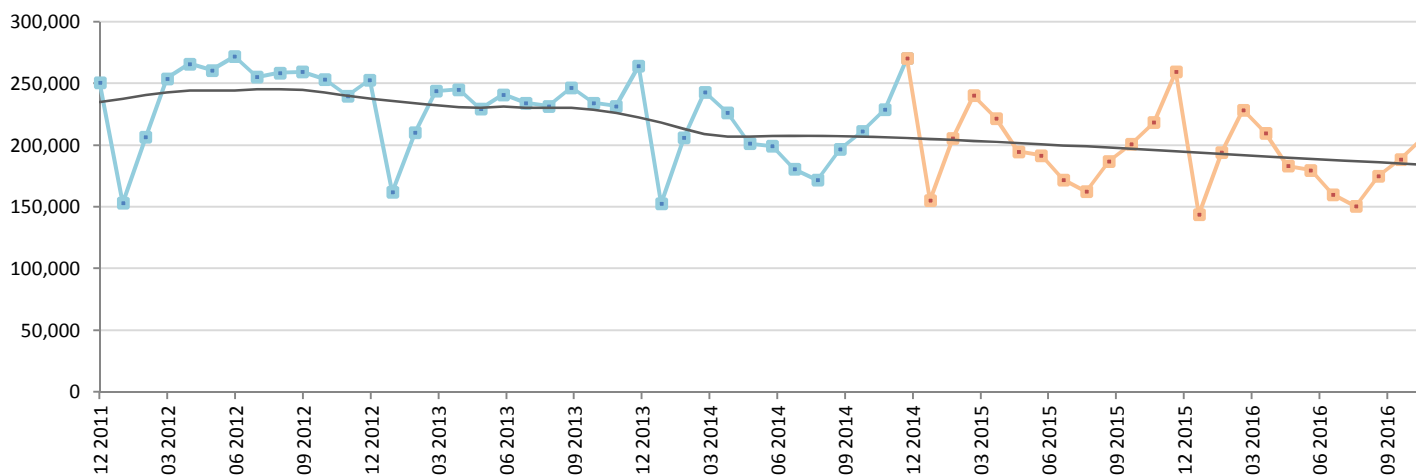
MTM (%) 17.8      YTY (%) 2.4      YTD (%) -10.3      FY (%) -10.3      FY 2014 = 2,491,249

**Comment : December was positive but FY is in negative trend**



	Jan.	Feb.	March	April	May	June	July	Aug.	Sept.	Oct.	Nov.	Dec.	YTD	FY
<b>2013</b>	162,077	210,666	244,030	245,334	229,670	241,346	234,569	231,915	246,895	234,481	231,982	264,257	2,777,222	2,777,222
<b>2014</b>	152,712	206,476	243,335	226,526	201,487	199,398	180,767	172,015	197,076	211,365	229,439	270,653	2,491,249	2,491,249
<b>2015</b>	155,257	205,968	240,409	221,683	195,125	191,832	172,247	162,739	187,358	201,015	218,713	259,629	2,411,973	2,411,973
<b>YTY (%)</b>	-5.8	-2.0	-0.3	-7.7	-12.3	-17.4	-22.9	-25.8	-20.2	-9.9	-1.1	2.4	-10.3	-10.3

Actual data      Forecast



Data source: CORAM,AEB