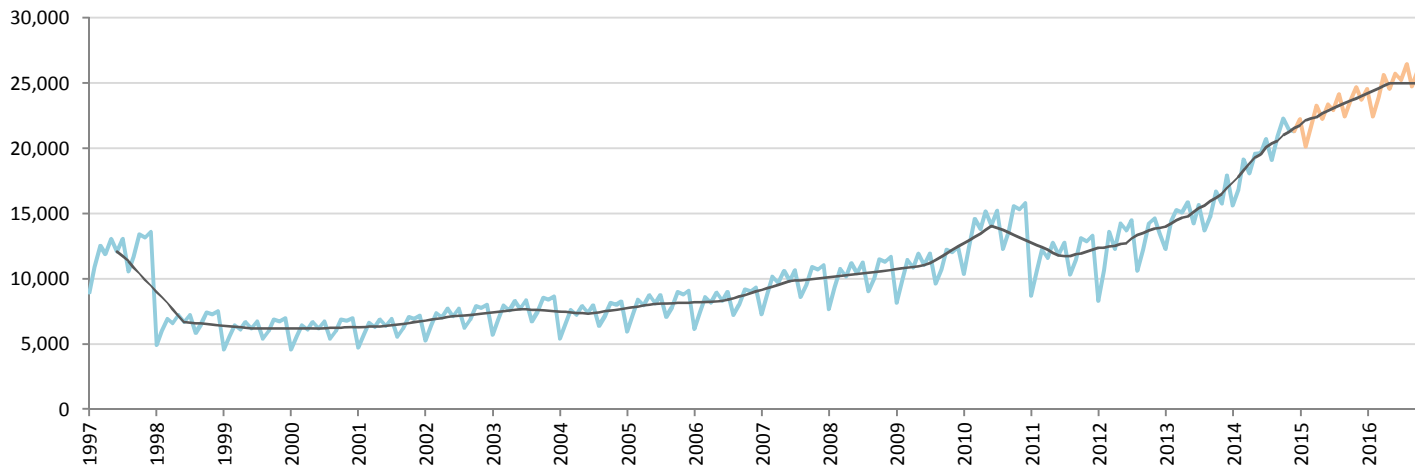


# Car Market Forecast : PHILIPPINES TOT December 2014

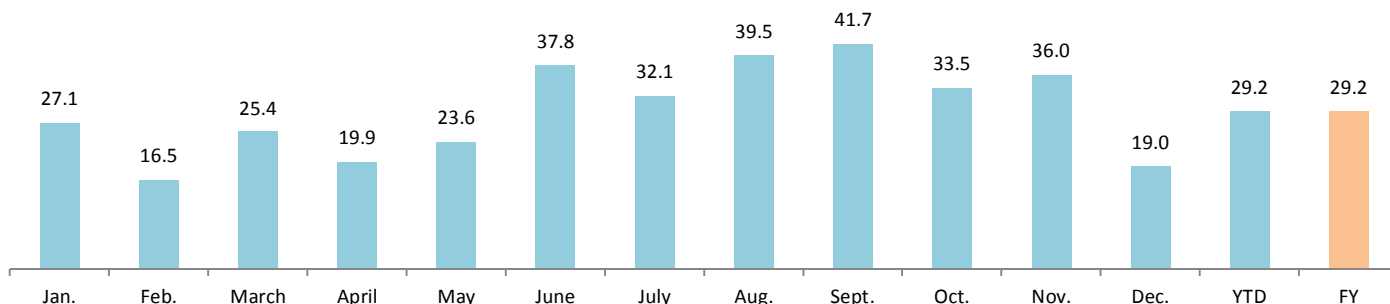
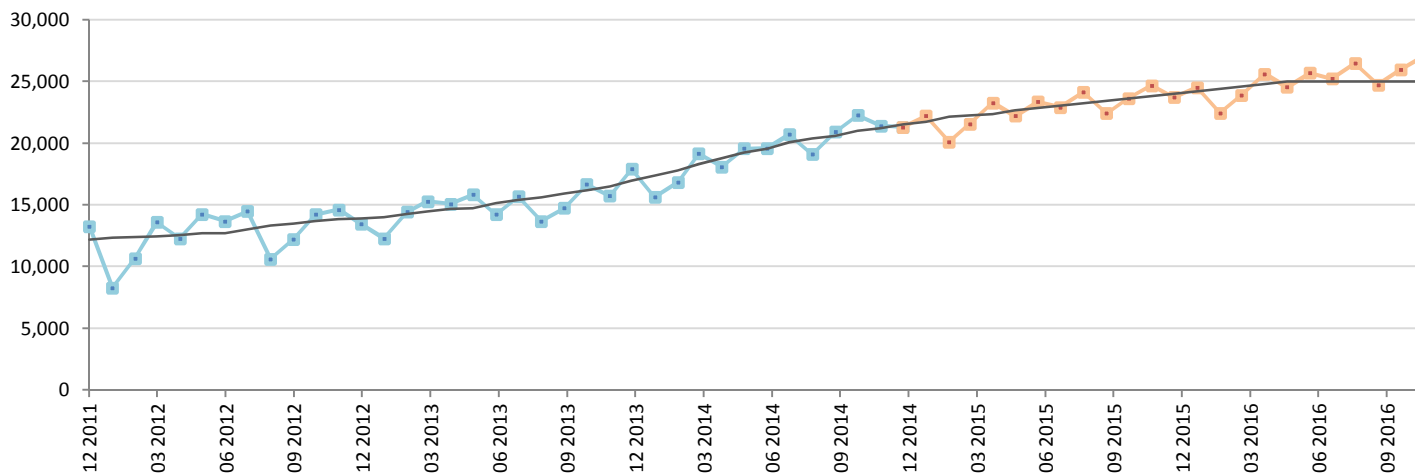
MTM (%) -0.6      YTY (%) 19.0      YTD (%) 29.2      FY (%) 29.2      FY 2014 = 234,747

**Comment : The market is well orientated**



	Jan.	Feb.	March	April	May	June	July	Aug.	Sept.	Oct.	Nov.	Dec.	YTD	FY
<b>2013</b>	12,303	14,439	15,292	15,094	15,860	14,240	15,689	13,700	14,764	16,682	15,746	17,920	181,729	181,729
<b>2014</b>	15,642	16,828	19,173	18,094	19,598	19,622	20,730	19,116	20,924	22,278	21,422	21,320	234,747	234,747
<b>2015</b>	22,220	20,127	21,587	23,295	22,234	23,382	22,928	24,159	22,430	23,649	24,695	23,725	274,432	274,432
<b>YTY (%)</b>	27.1	16.5	25.4	19.9	23.6	37.8	32.1	39.5	41.7	33.5	36.0	19.0	29.2	29.2

Actual data Forecast



Data source: CORAM,CAMPI