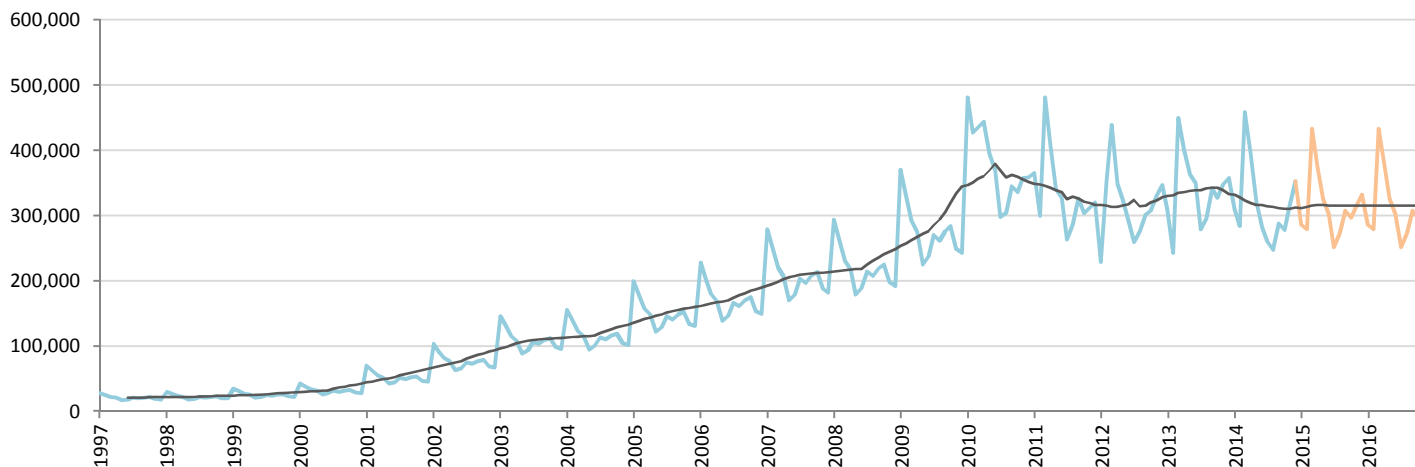


# Car Market Forecast : CHINA CV December 2014

MTM (%) 10.7      YTY (%) -1.3      YTD (%) -6.7      FY (%) -6.7      FY 2014 = 3,792,200

Comment : The market was in recession almost all the year



	Jan.	Feb.	March	April	May	June	July	Aug.	Sept.	Oct.	Nov.	Dec.	YTD	FY
<b>2013</b>	309,000	242,700	449,600	400,300	364,600	350,631	278,694	295,667	342,300	326,900	347,560	357,200	4,065,152	4,065,152
<b>2014</b>	309,500	284,200	459,000	395,200	320,800	281,700	260,200	247,400	287,600	278,300	315,600	352,700	3,792,200	3,792,200
<b>2015</b>	286,218	279,092	433,523	376,844	325,868	302,164	252,075	271,887	307,400	297,052	316,669	331,692	3,780,482	3,780,482
<b>YTY (%)</b>	0.2	17.1	2.1	-1.3	-12.0	-19.7	-6.6	-16.3	-16.0	-14.9	-9.2	-1.3	-6.7	-6.7

Actual data      Forecast

