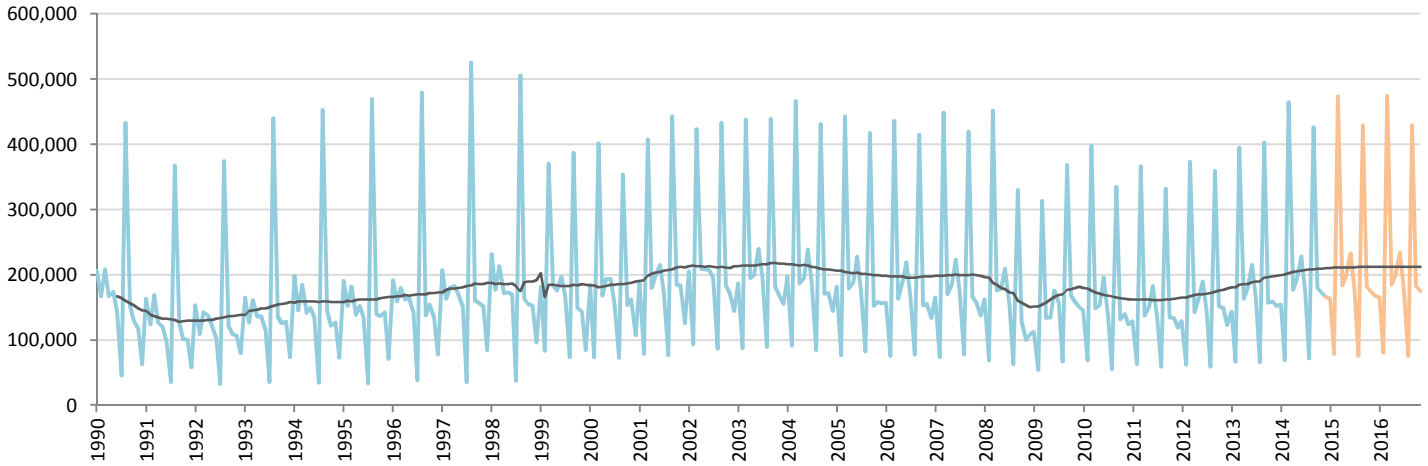


# Car Market Forecast : UK PC December 2014

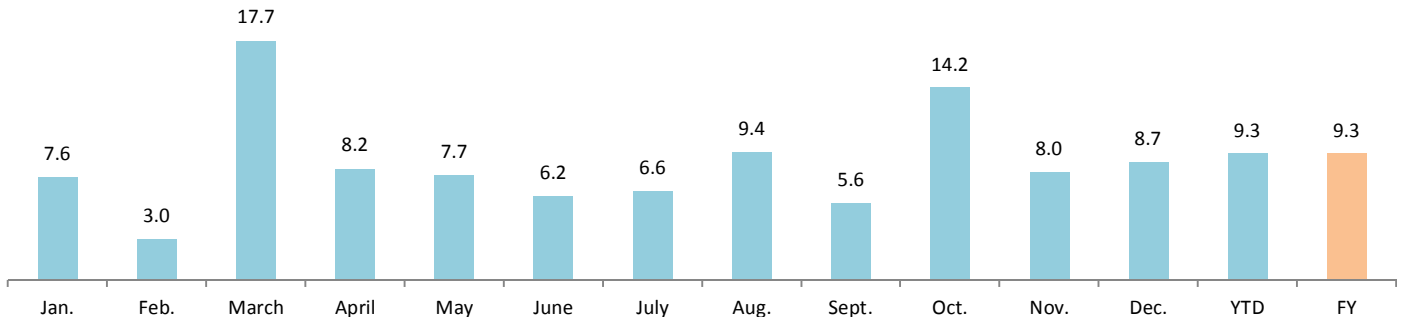
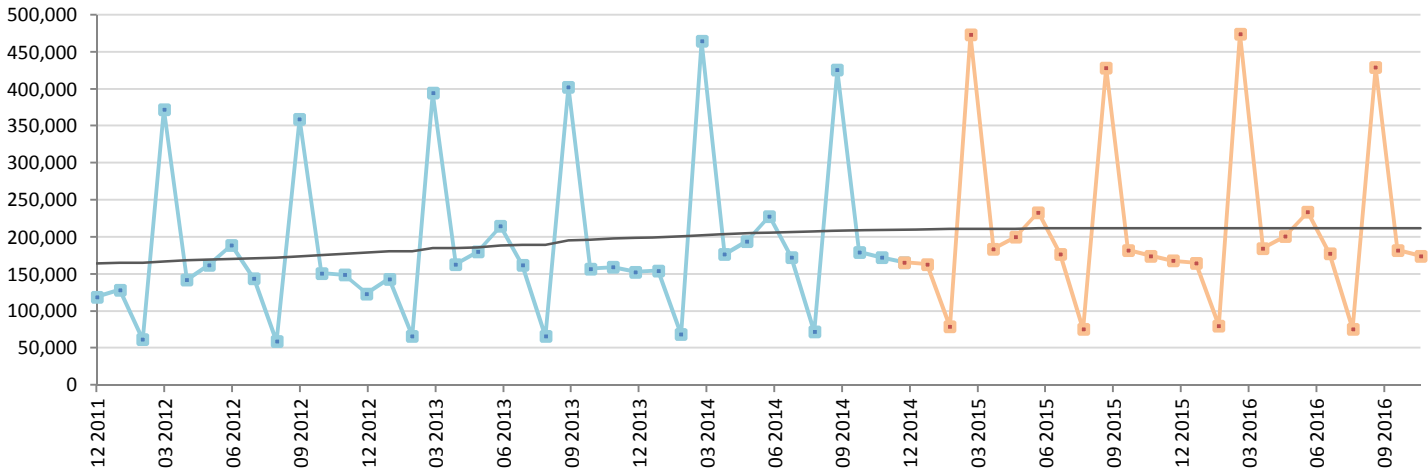
MTM (%) -3.8      YTY (%) 8.7      YTD (%) 9.3      FY (%) 9.3      FY 2014 = 2,476,435

**Comment : The market is still confirming its positive trend**



	Jan.	Feb.	March	April	May	June	July	Aug.	Sept.	Oct.	Nov.	Dec.	YTD	FY
<b>2013</b>	143,643	66,749	394,806	163,357	180,111	214,957	162,228	65,937	403,136	157,314	159,581	152,918	2,264,737	2,264,737
<b>2014</b>	154,562	68,736	464,824	176,820	194,032	228,291	172,907	72,163	425,861	179,714	172,327	166,198	2,476,435	2,476,435
<b>2015</b>	163,601	79,209	473,595	184,166	200,185	233,444	177,223	75,778	428,888	182,250	174,451	167,977	2,540,765	2,540,765
<b>YTY (%)</b>	7.6	3.0	17.7	8.2	7.7	6.2	6.6	9.4	5.6	14.2	8.0	8.7	9.3	9.3

Actual data      Forecast



Data source: SMMT