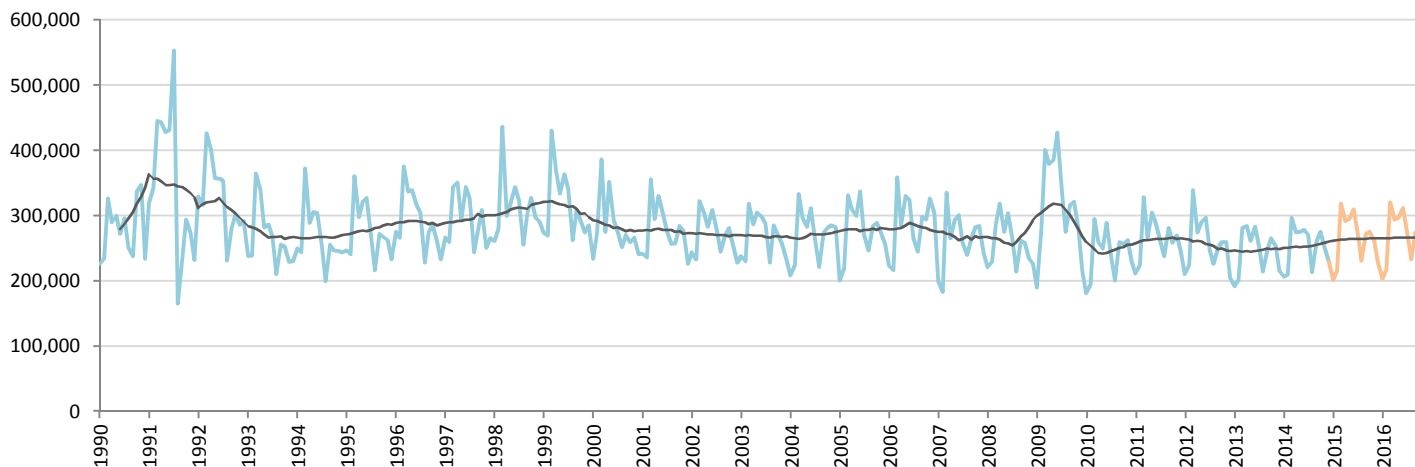


# Car Market Forecast : GERMANY PC December 2014

MTM (%) -8.0      YTY (%) 6.7      YTD (%) 2.9      FY (%) 2.9      FY 2014 = 3,036,773

**Comment : Confirmation of the positive trend of September with a strong increase above expectation**



	Jan.	Feb.	March	April	May	June	July	Aug.	Sept.	Oct.	Nov.	Dec.	YTD	FY
<b>2013</b>	192,090	200,683	281,184	284,444	261,316	282,913	253,146	214,044	247,199	265,441	254,651	215,320	2,952,431	2,952,431
<b>2014</b>	205,996	209,349	296,408	274,097	274,804	277,614	270,249	213,092	260,062	275,320	250,082	229,700	3,036,773	3,036,773
<b>2015</b>	201,675	215,498	318,420	291,468	294,844	309,376	273,980	231,234	271,703	275,077	261,224	227,107	3,171,606	3,171,606
<b>YTY (%)</b>	7.2	4.3	5.4	-3.6	5.2	-1.9	6.8	-0.4	5.2	3.7	-1.8	6.7	2.9	2.9

Actual data      Forecast

