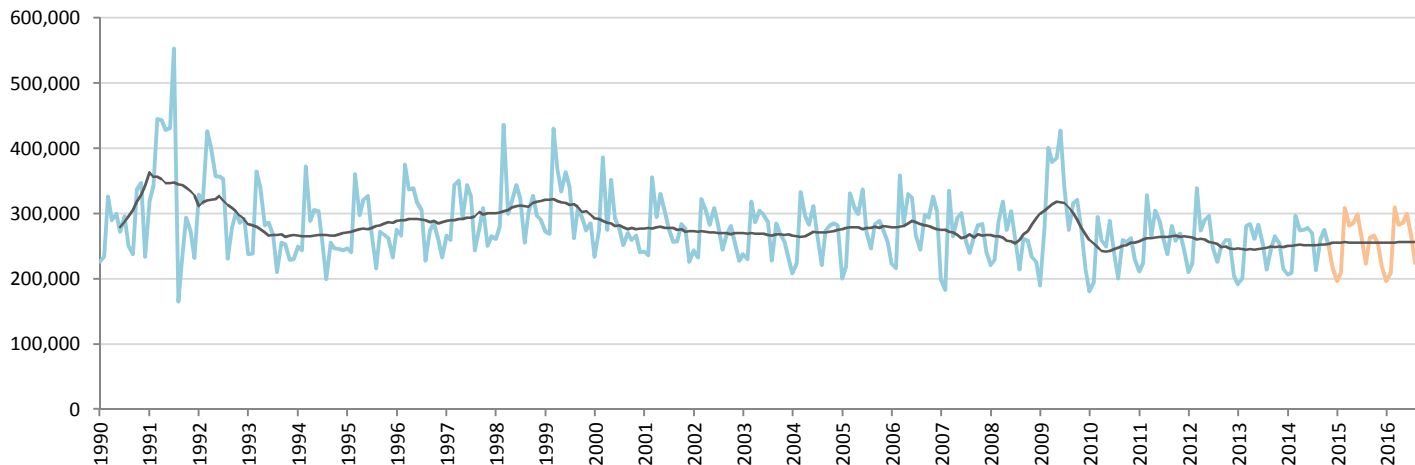


Car Market Forecast : GERMANY PC November 2014

MTM (%) -9.5 YTY (%) -1.8 YTD (%) 2.6 FY (%) 2.4 FY 2014 = 3,024,576

Comment : The market is stabilizing after 2 months of increasing



	Jan.	Feb.	March	April	May	June	July	Aug.	Sept.	Oct.	Nov.	Dec.	YTD	FY
2013	192,090	200,683	281,184	284,444	261,316	282,913	253,146	214,044	247,199	265,441	254,651	215,320	2,737,111	2,952,431
2014	205,996	209,349	296,408	274,097	274,804	277,614	270,249	213,092	260,062	275,320	250,100	217,485	2,807,091	3,024,576
2015	196,195	209,311	308,585	282,090	285,023	298,896	264,757	223,403	262,585	266,115	252,922	217,899	2,849,882	3,067,781
YTY (%)	7.2	4.3	5.4	-3.6	5.2	-1.9	6.8	-0.4	5.2	3.7	-1.8	1.0	2.6	2.4

Actual data Forecast

