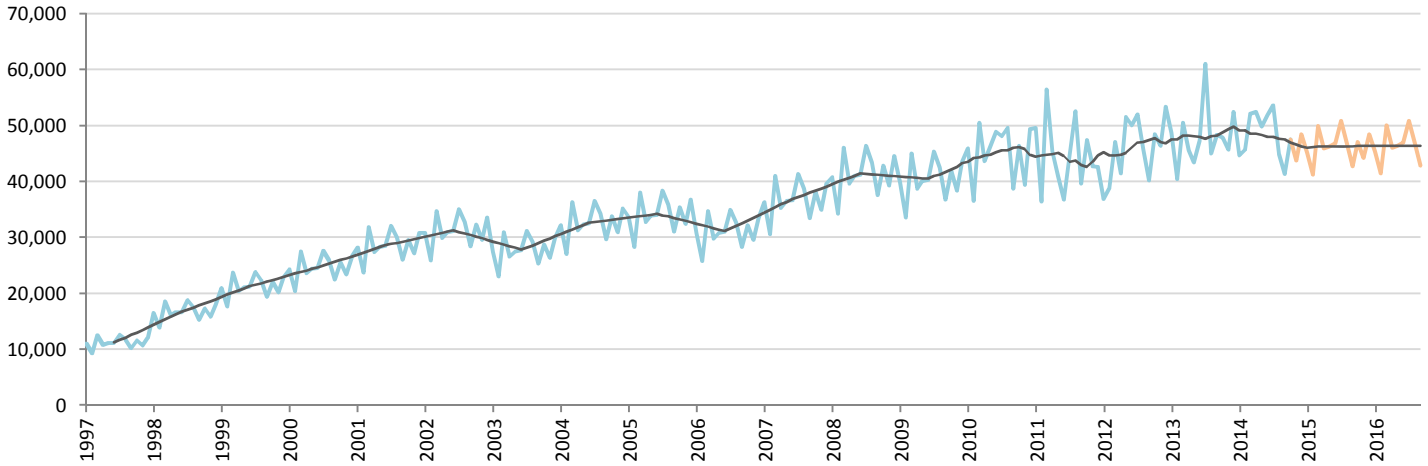


Car Market Forecast : MALAYSIA PC October 2014

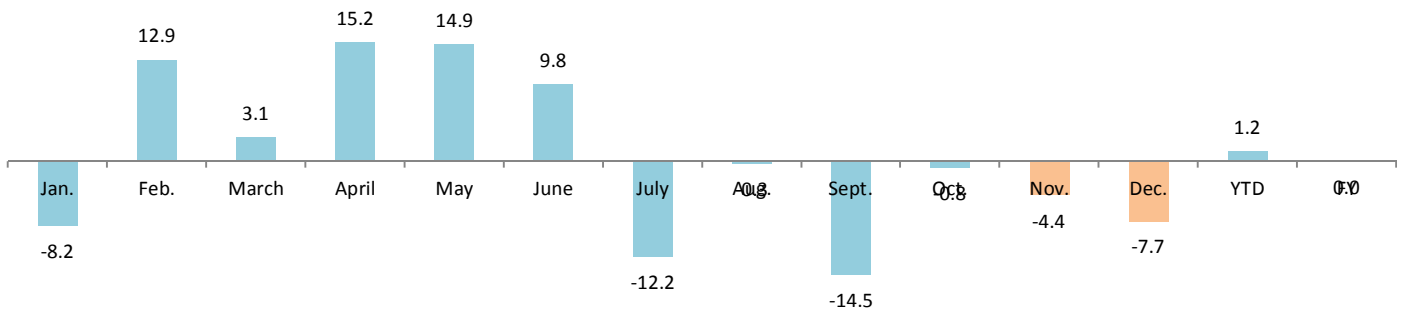
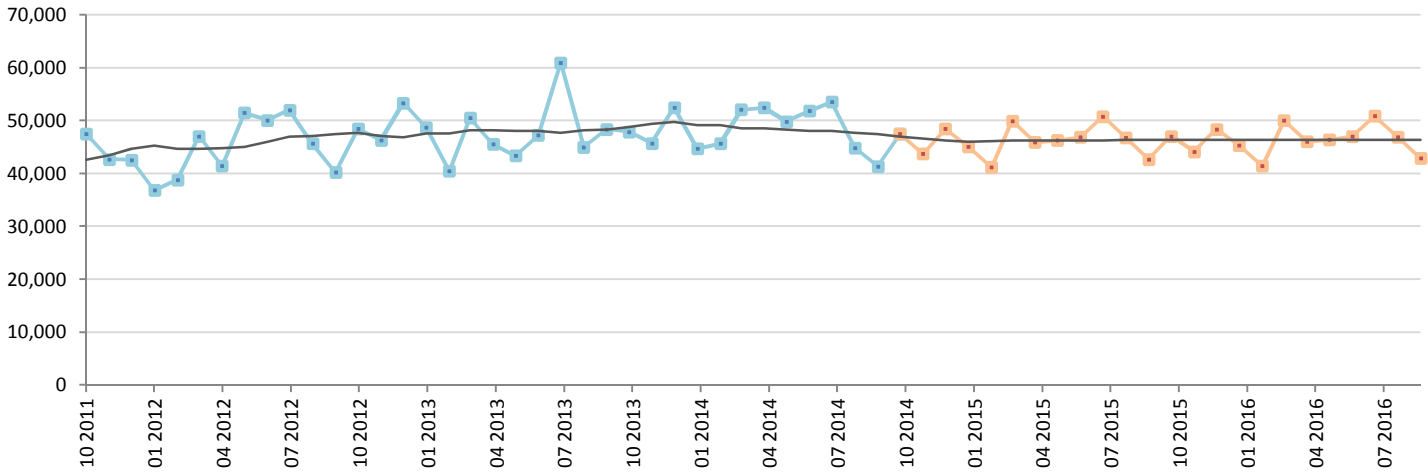
MTM (%) 12.7 YTY (%) -0.8 YTD (%) 1.2 FY (%) 0.0 FY 2014 = 576,392

Comment : The market is stable in October



	Jan.	Feb.	March	April	May	June	July	Aug.	Sept.	Oct.	Nov.	Dec.	YTD	FY
2013	48,720	40,477	50,562	45,564	43,398	47,270	61,032	45,052	48,411	47,930	45,749	52,490	478,416	576,655
2014	44,702	45,704	52,122	52,488	49,865	51,898	53,578	44,898	41,397	47,544	43,743	48,454	484,196	576,392
2015	45,105	41,248	49,985	45,918	46,310	46,912	50,830	46,871	42,706	47,117	44,197	48,416	463,002	555,615
YTY (%)	-8.2	12.9	3.1	15.2	14.9	9.8	-12.2	-0.3	-14.5	-0.8	-4.4	-7.7	1.2	0.0

Actual data Forecast



Data source: MAA